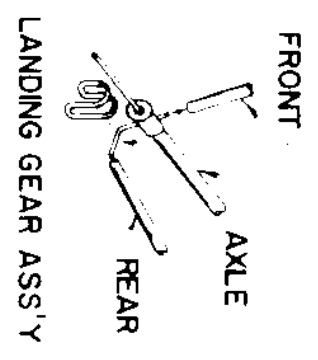


SHAFTS OF .031" DIA. MUSIC WIRE 1" LONG CEMENTED IN EACH END. SEE DETAIL BELOW.



INTERPLANE STRUTS
1/16 Balsa

RIGGING .005 NYLON MONOFILAMENT

SLANT THESE 2 RIBS FOR STRUT

BLACK CROSS ON WHITE FIELD

LEADING EDGES 3/32 x 1/8 HIGH

FRONT SPARS 1/16 x 7/32

REAR SPARS 1/16 x 3/16

OS 24 cm (9 1/2") PROP

Balsa SPINNER

DOWN THRUST 4°

SIG BALL THRUST BEARING "SMALL"

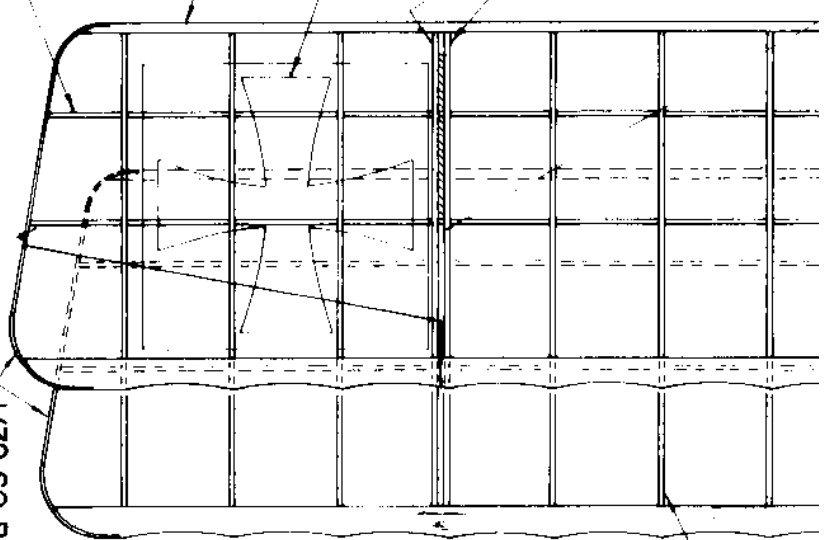
047 MUSIC WIRE PROP SHAFT

SPINNER BACKPLATE 1/64 THK PLYWOOD
REMOVABLE PLUG 1/32 PLYWOOD & 7/8 SQ. Balsa

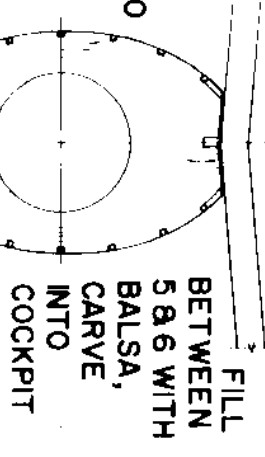
050 I.D. BRASS TUBING

REAR LANDING GEAR WIRE PATTERN

FRONT LANDING GEAR WIRE PATTERN

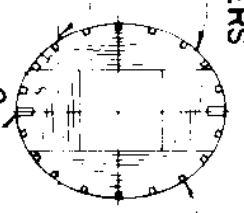


RIBS 1/20 Balsa

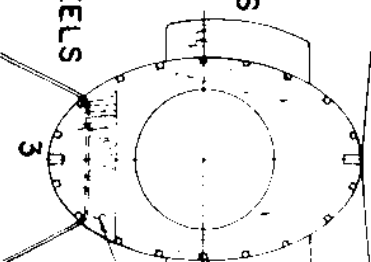


-FILL W/ SHT TO STRINGER FOR WING SADDLE SUPPORT, BOTH WINGS & STAB

ALL FORMERS 1/16 Balsa FEED RIGGING THRU BLKS.



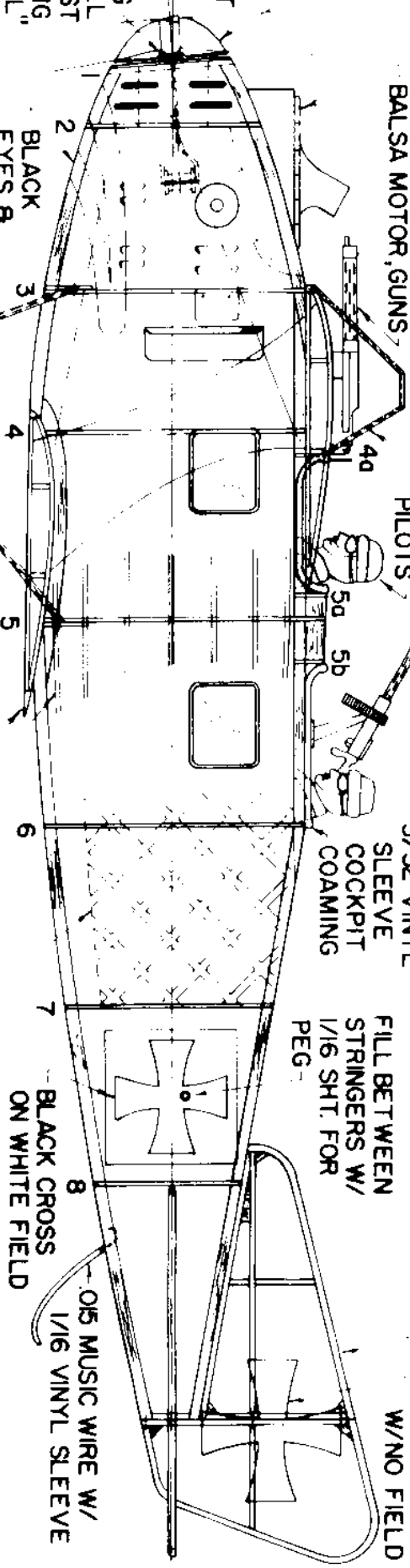
-FILL BETWEEN FORMERS 1 & 2 W/ Balsa BLOCKS NOTE GRAIN DIR.



3/32 SQ. Balsa HOT BENT

FILL BETWEEN STRINGERS W/ 1/16 SHT. FOR PEG-

BLACK CROSS W/NO FIELD



1/4 Balsa WHEELS 1 13/16 DIA.

AXLE WEB 3/32 Balsa
CARD STOCK CONE OUTSIDE,
1/16 ALUMINUM TUBE BEARING

LANDING BRAKE - 1/8 PLYWOOD
3/16 O.D. ORTHODONTIC RUBBER BANDS.

PROTOTYPE WEIGHT LESS MOTOR: 59gms.

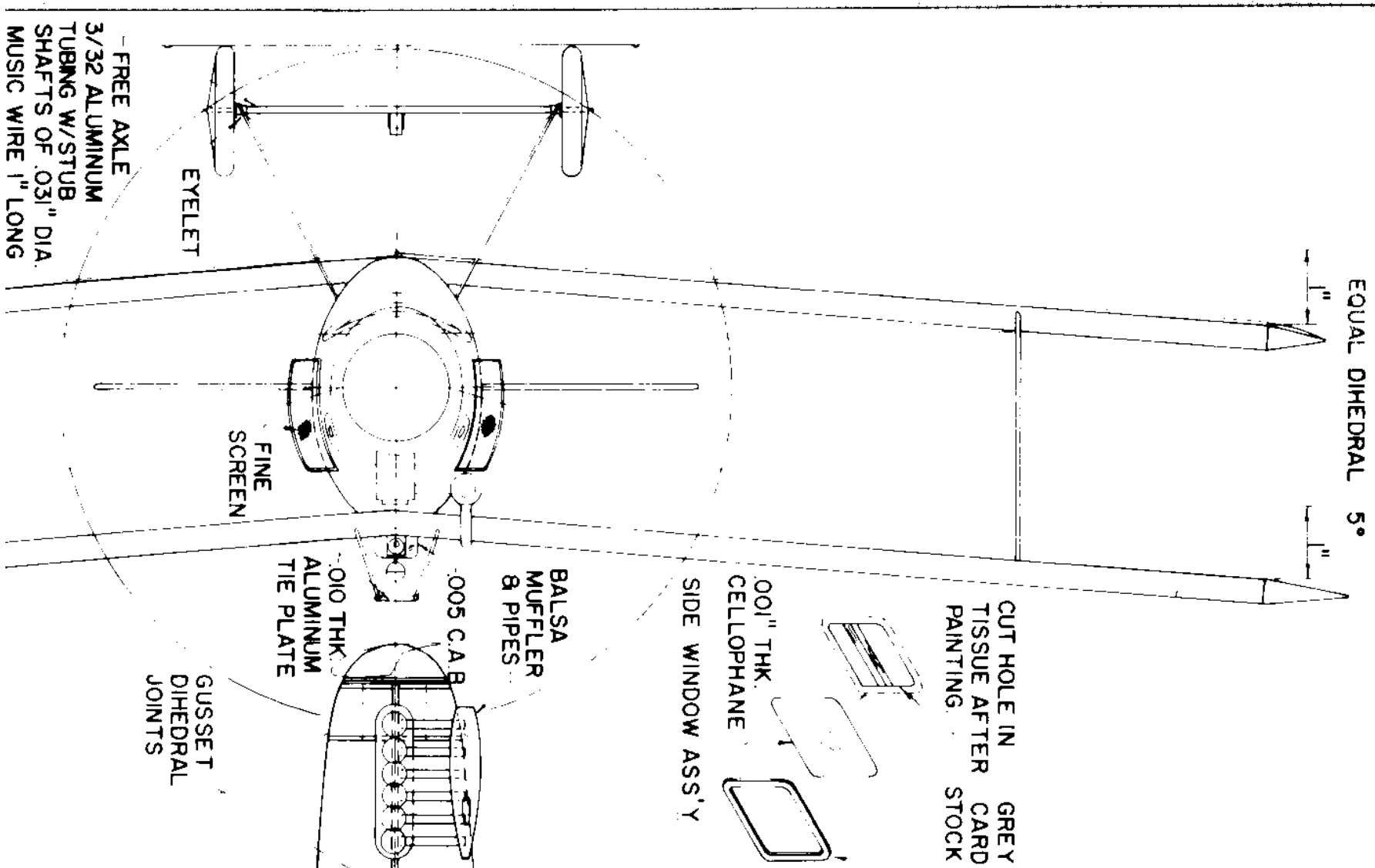
"SCALES" ARE PACTRA INSIGNIA BLUE ENAMEL LIGHTLY SPRAYED WITH AN AIRBRUSH.

RUBBER POWERED FREE FLIGHT SCALE

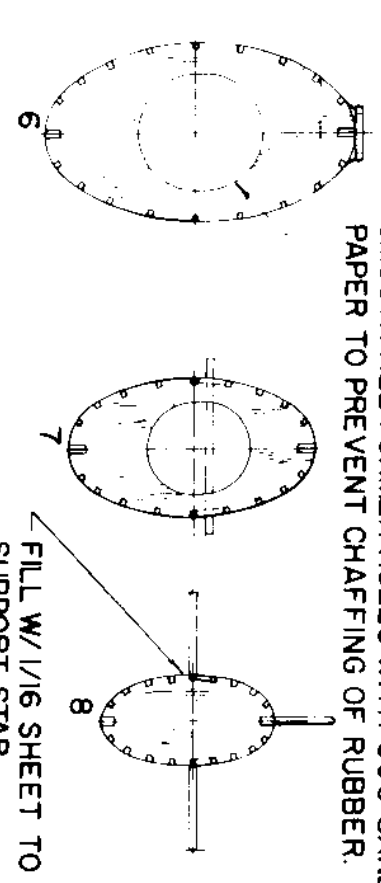
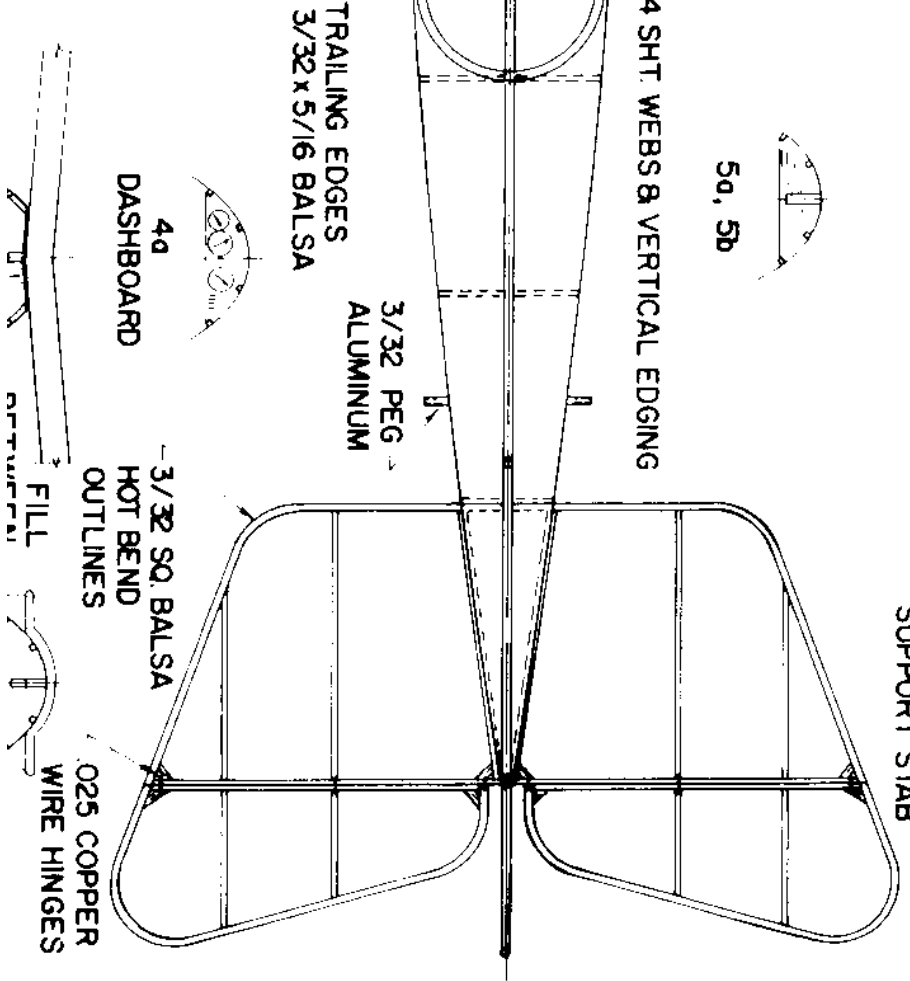
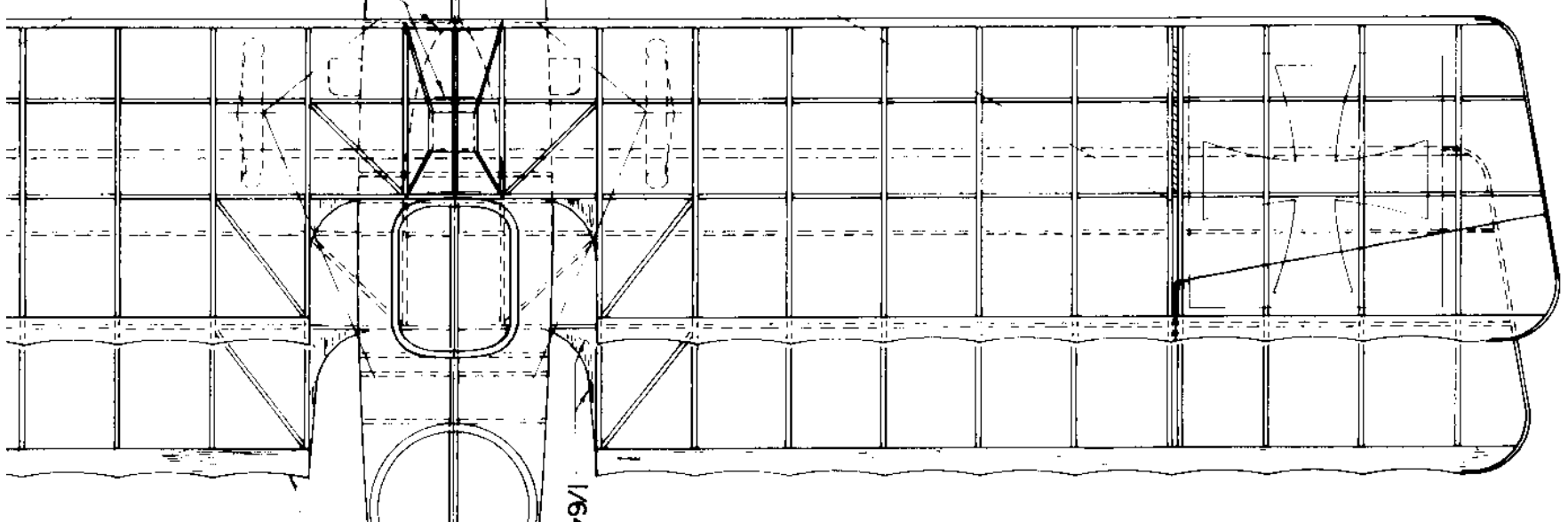
ROLAND CII

"WALFISCH"

26 7/8" SPAN BY DAVE REES OCT '82



EQUAL DIHEDRAL 5°



SMOOTH ALL FORMER HOLES WITH 600 SAND-PAPER TO PREVENT CHAFFING OF RUBBER.

- REFERENCE DATA**
1. THIS AIRCRAFT WAS FLOWN BY LEUTNANT SEIBERT WITH HAUPTMANN PFLEGER AS OBSERVER ON THE WESTERN FRONT 13 SEPT. 1916.
 2. FOR FULL COLOR 5-VIEW SEE PROFILE PUB. NO. 163. MANY GOOD PHOTOS ARE INCLUDED.
 3. OVERALL COLOR IS PACTRA AERO BLUE FLAT ENAMEL SPRAYED OVER MICRO-X WHITE JAP TISSUE.
 4. RUBBER MOTOR: TWO LOOPS OF 3/16 x .043 x 30" LONG F.A.I., 1400 TURNS. ALWAYS WIND USING A WINDING TUBE!
 5. SCALE: .864" = 1'-0"

-FREE AXLE
3/32 ALUMINUM
TUBING W/STUB
SHAFTS OF .031" DIA.
MUSIC WIRE 1" LONG