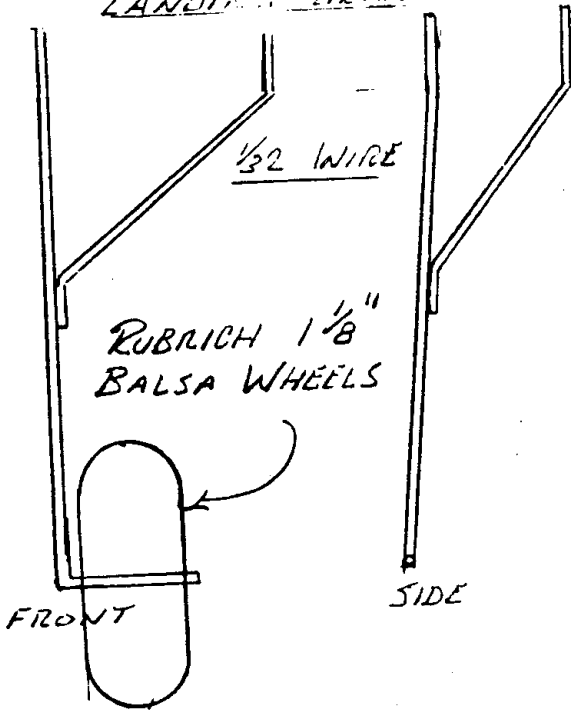
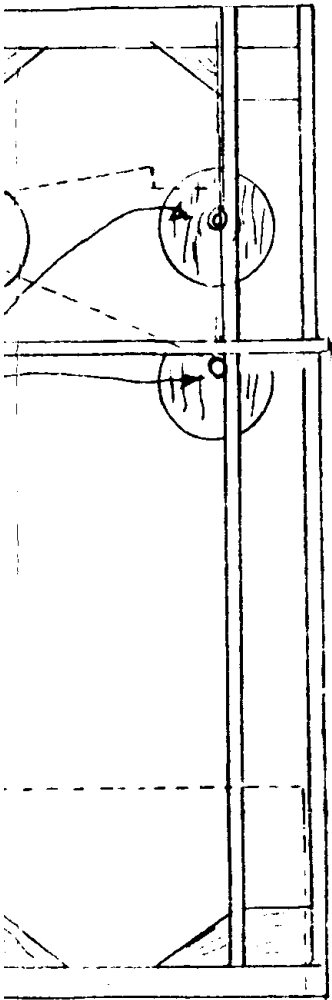
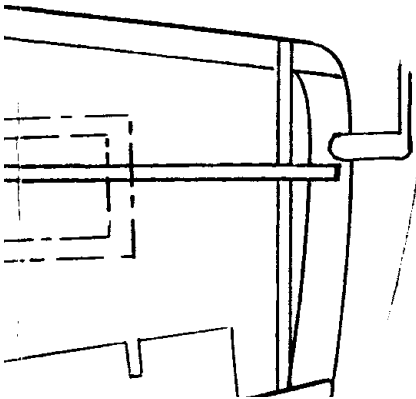
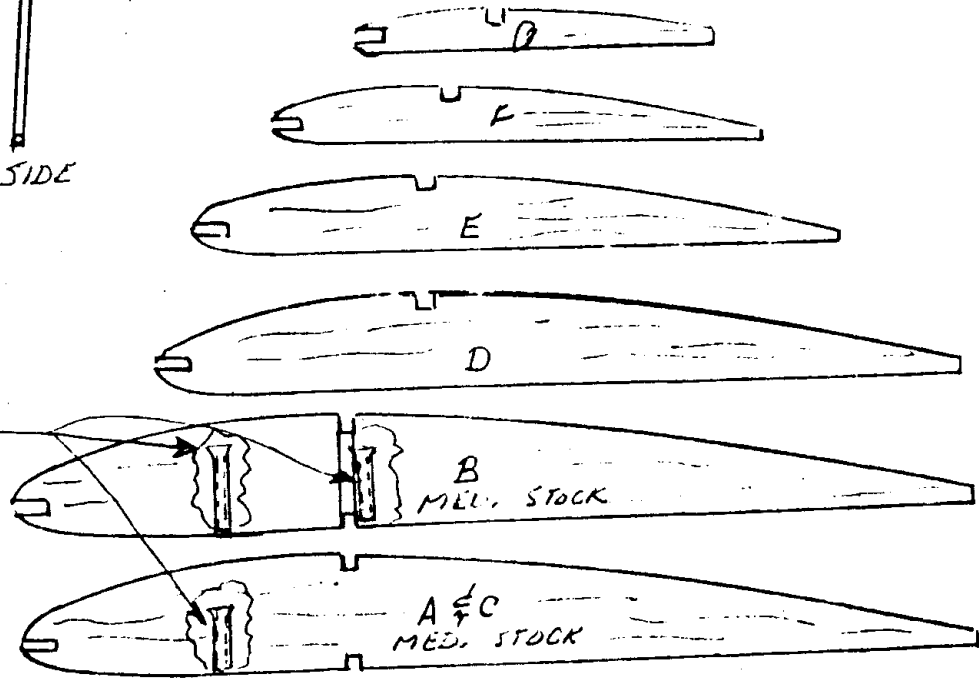


REMOVABLE
LANDING GEAR

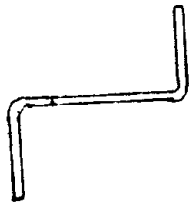


(REMOVABLE L.G.)

1/32 I.D. TUBING
CRIMP @ TOP
EPOXY TO RIB

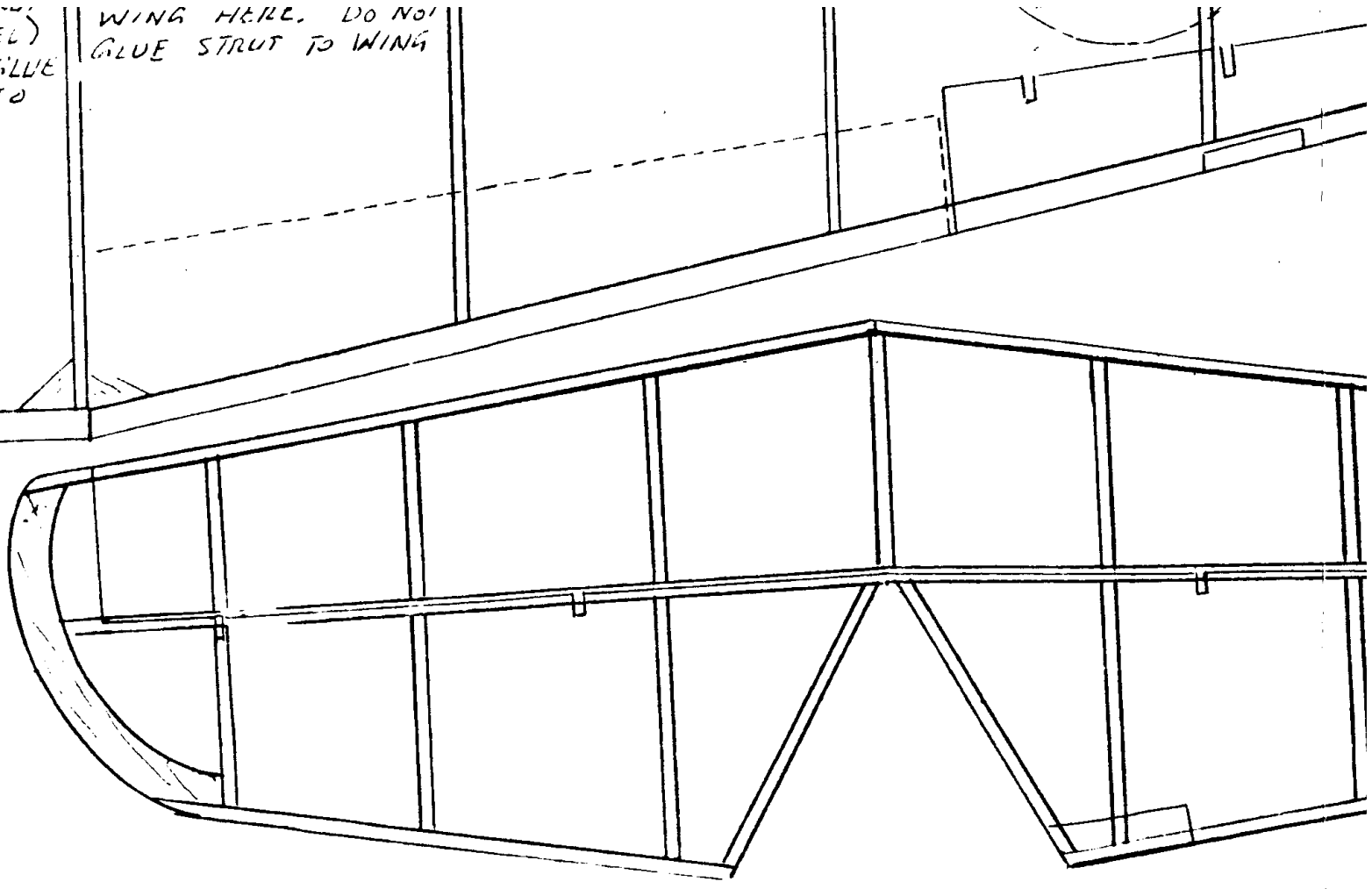


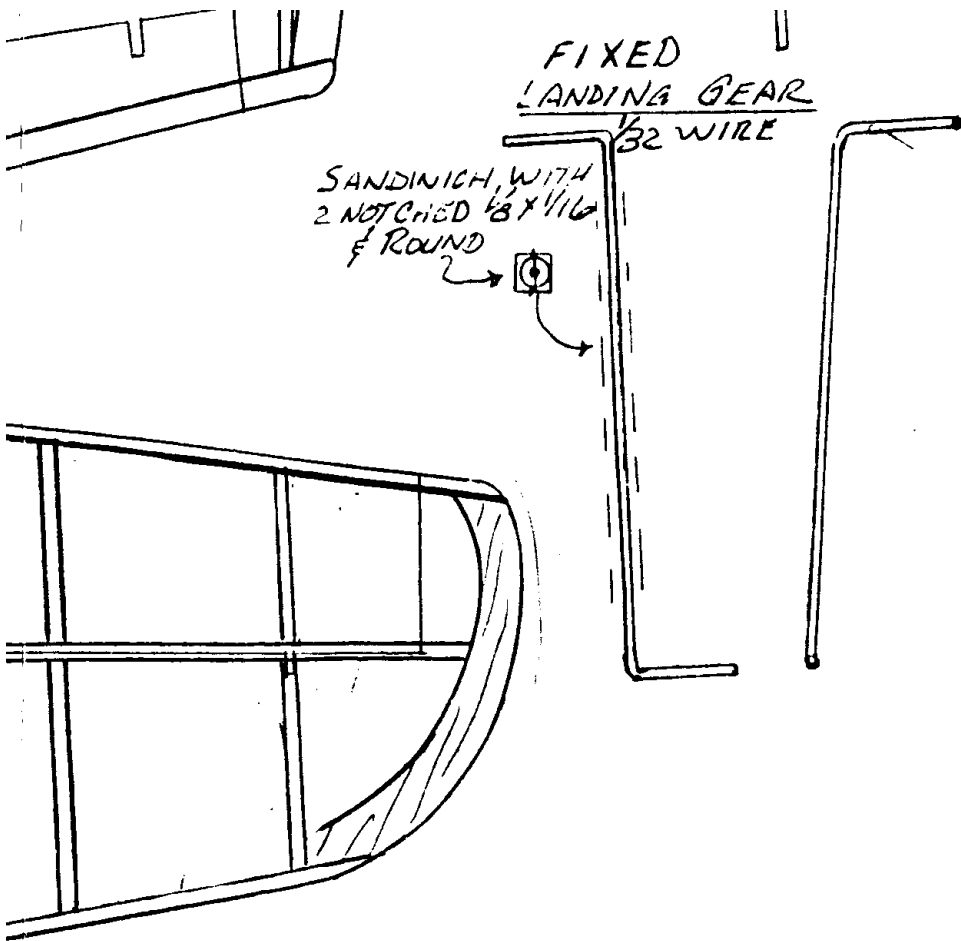
FIXED



KEEL STRUT
(1/16 DOWEL)
DO NOT GLUE
STRUT TO
WING.

WING HERE. DO NOT
GLUE STRUT TO WING



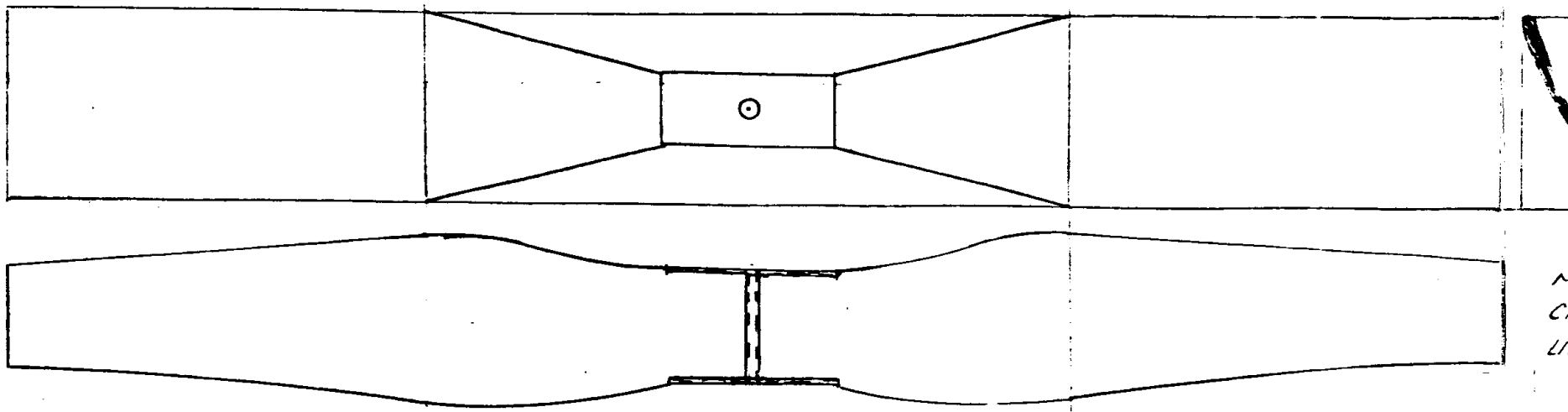


GRUMMAN TBF-1

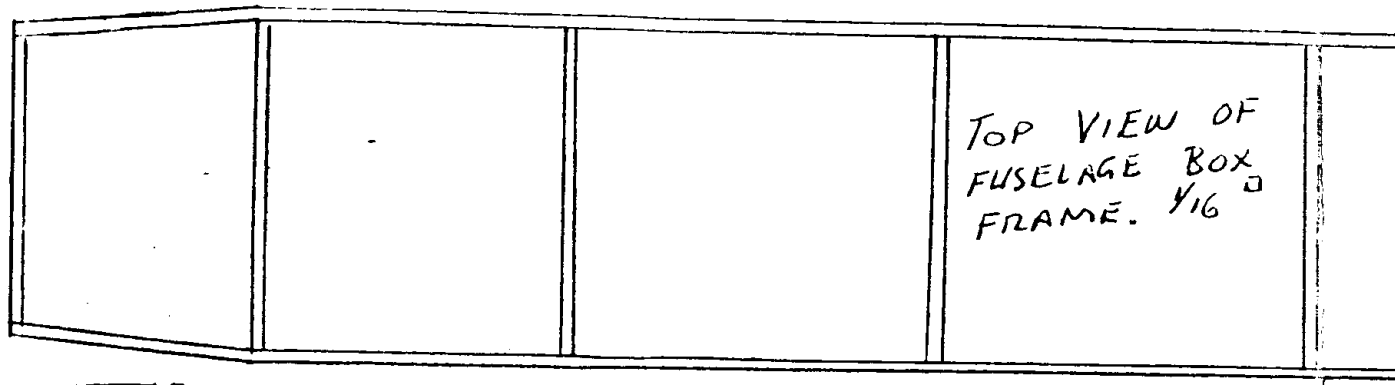
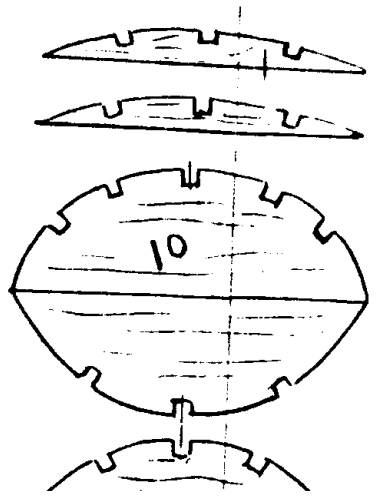
AVENGER

DESIGNED & DRAWN BY

RALPH KUENZ



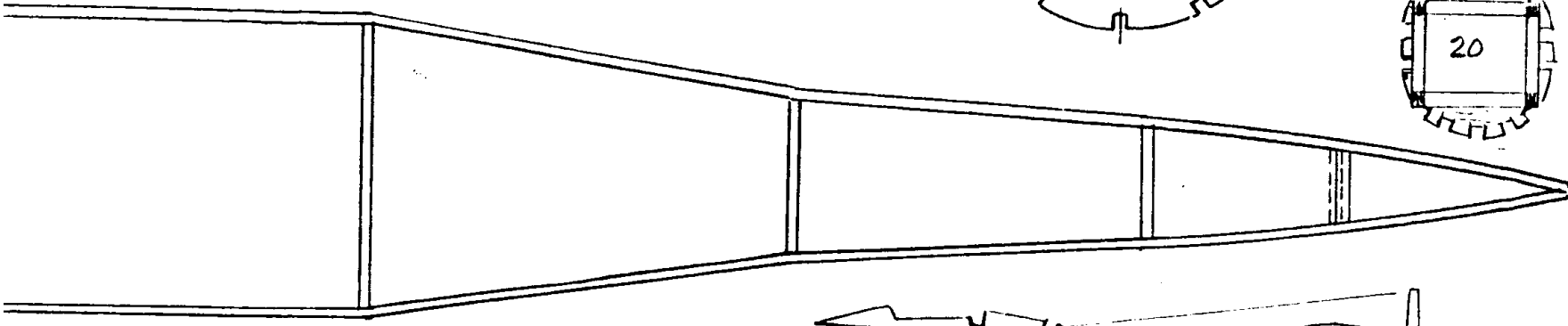
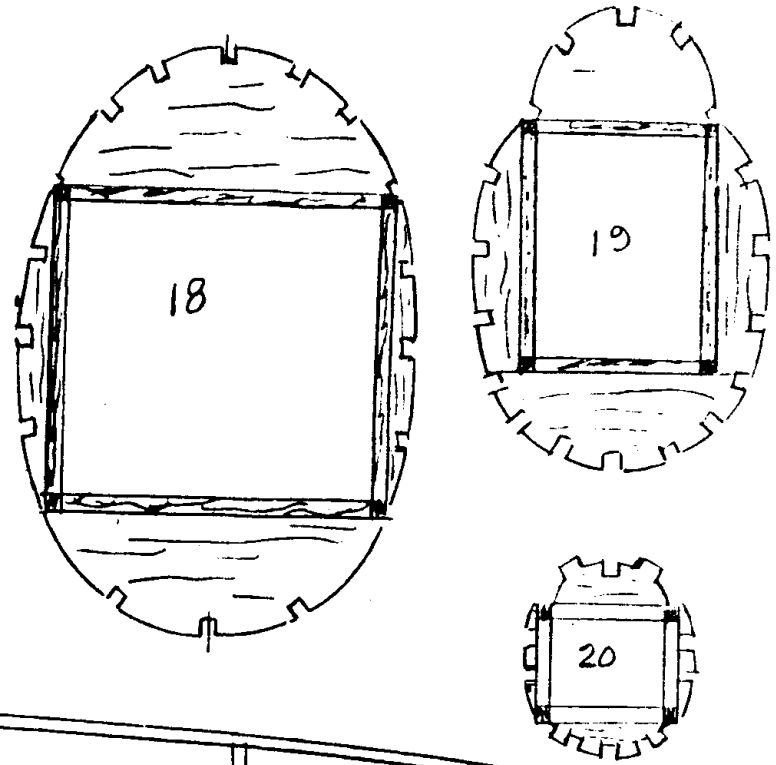
~
C1
41

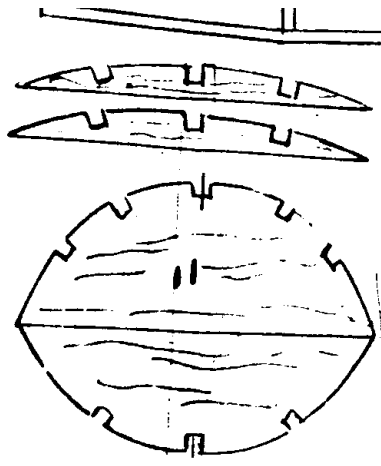
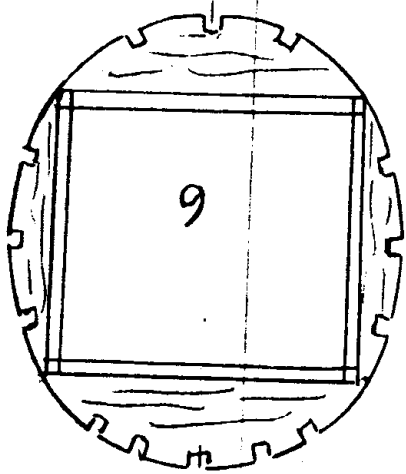


TOP VIEW OF
FUSELAGE BOX
FRAME. Y16

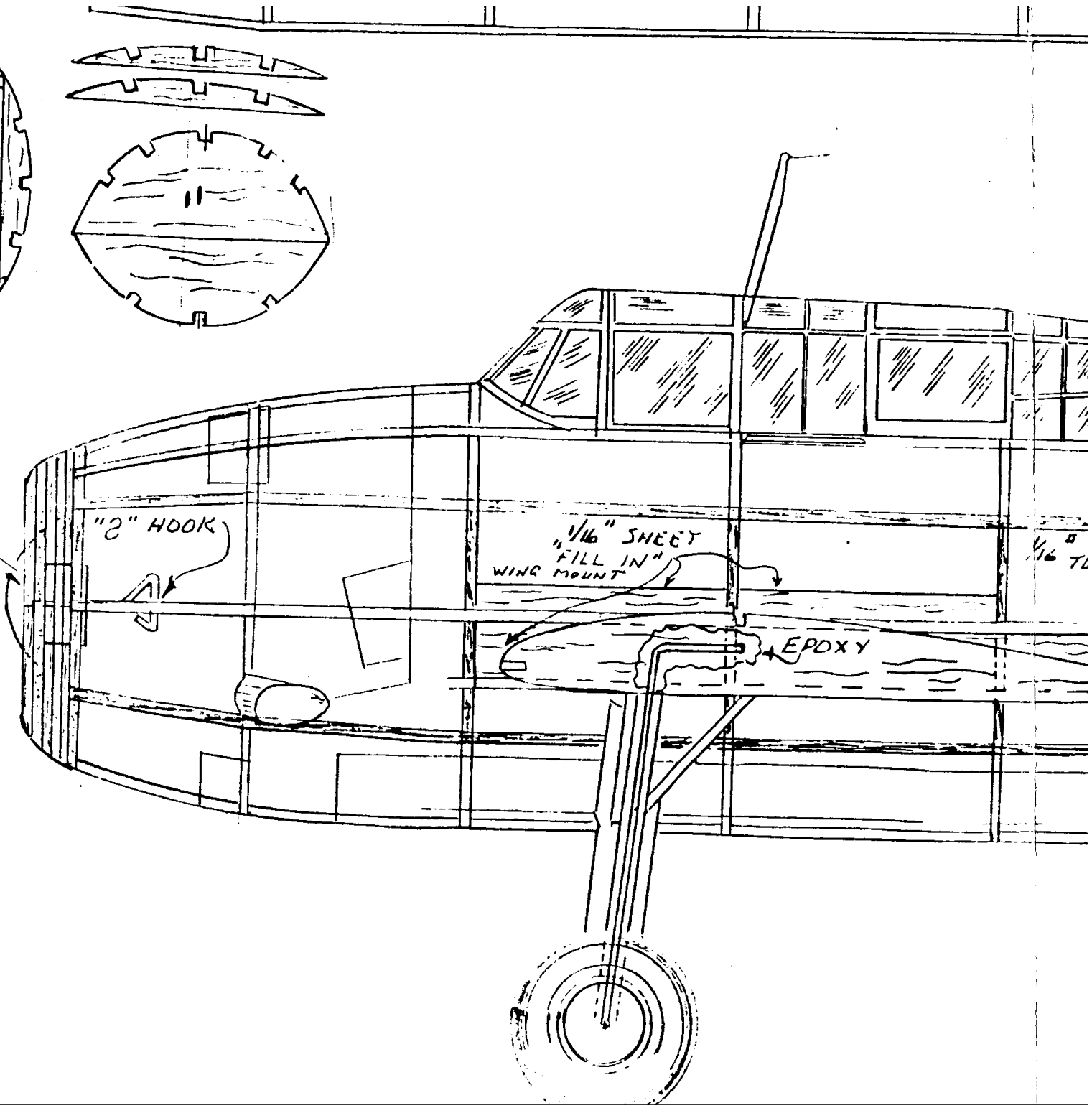
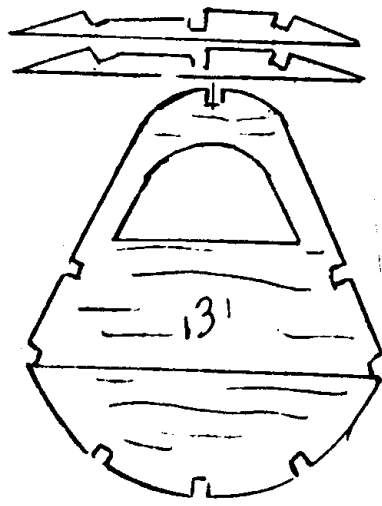


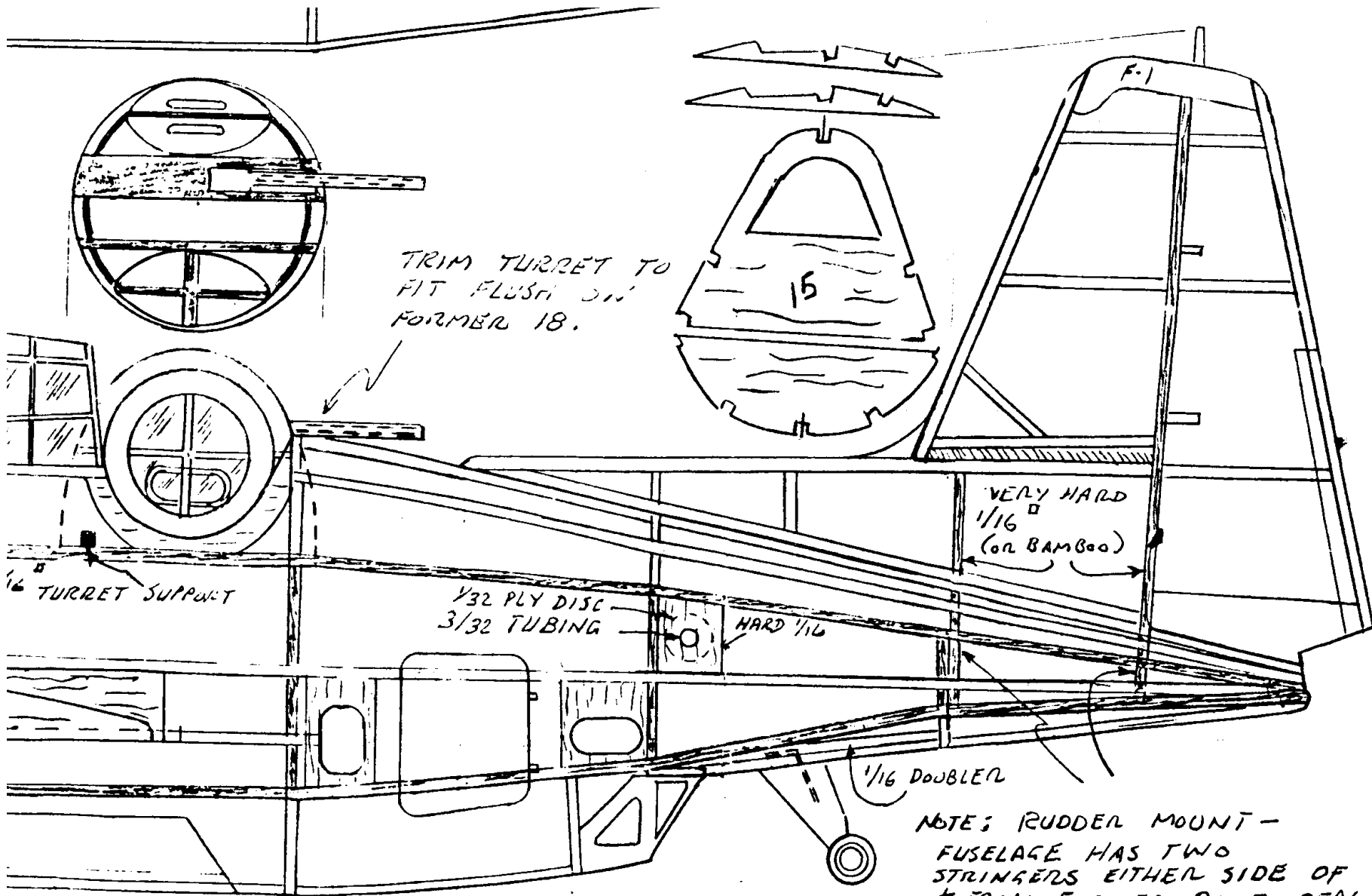
MAKE PROP BLADES FAIRLY THIN.
CARVE IN NO MORE THAN $\frac{1}{16}$ "
UNDER CAMBER ON REAR FACE.





USE WMS. BROS. 1/2"
NOSE BEARING
INSTALL WITH 1° DOWN
° RIGHT THRUST





NOTE: RUDDER MOUNT -
 FUSELAGE HAS TWO
 STRINGERS EITHER SIDE OF
 & FROM FORMER 20 TO REAR.
 INSERT VERTICAL RUDDER
 SPARS BETWEEN THEM.