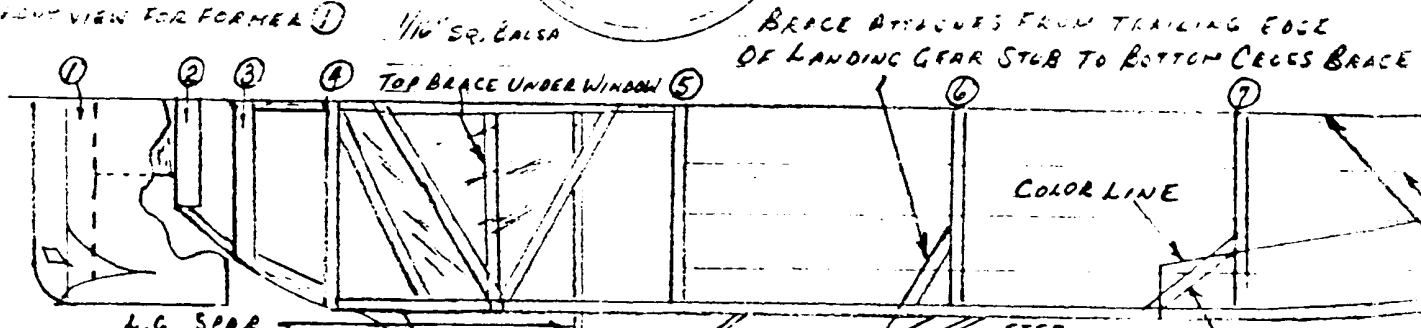


SEE FRONT VIEW FOR FORMER ①



SLICED RIBS FROM 1/16" SHEET Balsa

L.G. SPAR

STEP

BRACE ATTACHES FROM RIB PLATE TO TOP CROSS BRACE

1/4" PLY SPAR DIAGONAL, PASSES THROUGH SLICED RIBS.

1/32" PLY END RIB  
1/32" PLY TONGUE FOR KNOCK-OFF GEAR, SANDWICHED BETWEEN END RIB AND FAIRING

Balsa STRUT FAIRINGS, SANDWICHED TO BLEND WITH WING STRUTS

1/32" x 3/32" PLY LEADING & TRAILING EDGES

BAMBOO PINS TO FIX WING STRUTS

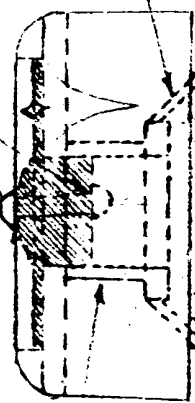
COVER WITH PAPER

1/16" SHEET Balsa RIB PLATE

1/16" x 3/16" Balsa PLANKING STRIPS

USE 2 PECK BEARINGS

JOHNS



1/16" Balsa SHEET

3/32" x 1/4" STRUTS  
DOOR OUTLINE, BOTH SIDES

COVER WITH PAPER

BASIC FUSELAGE STRUCTURE IS 1/16" SQ.

BRICE TRIM

3/4" x 3/4"  
1/16" SHEET Balsa - BOX

1/16" x 1/8"

SLOT FOR LANDING GEAR SPAR, CUT AFTER FRAME ASSEMBLY

BOND PAPER WINDOW FRAMES



RIB BASE PLATE

STINSON MODEL R JUNIOR for

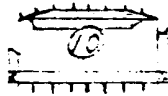
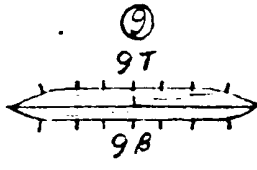
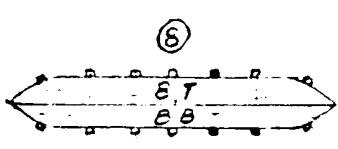
FAC GOLDEN AGE SCALE by

PAUL BOYANOWSKI 6/90

7/8" DIHEDRAL UNDER WING TIPS

PITOT TUBE - PORT WING ONLY - LENGTH: 1/4"

END OF PITOT TUBE



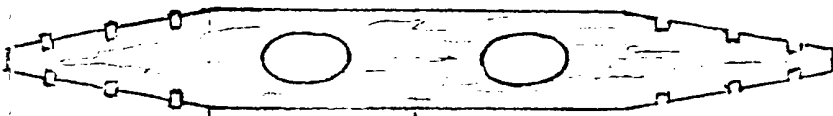
WING BRACE

TRIM COLOR

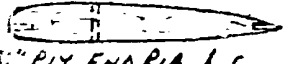
BACKGROUND COLOR

ATTACHES FROM  
TO TOP CROSS-  
BRACE

LOCATION OF 1/32" SQ.  
BALSA STRINGERS



1/32" PLY LANDING GEAR  
SPAR



1/32" PLY END RIB L.G.

GOLD TRADEMARK

NC-12501

WHITE OR BLACK  
(PINSTRIP  
OUTLINE)

CONTROL  
SURFACE SEP.

STINSON  
MODELS  
STINSON AIRCRAFT CO  
DETROIT USA

BACKGROUND  
COLOR

STINSON-MANVILLE

JM  
PRODUCTS

TRIM OUTLINE

LAM. 3 1/32" x 1/16"

SLOT IN 1/64" PLY  
FOR STAB. ADJUSTMENT

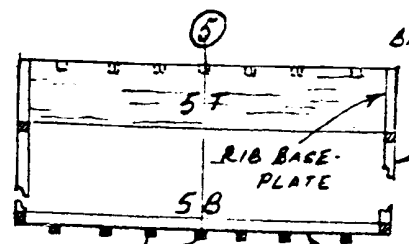
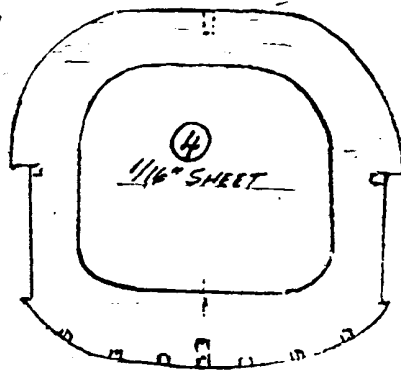
NOTCH OUT SCRAP  
BALSA PIECE FOR  
STAB SPAR... STAB.  
PIVOTS HERE TO ADJUST.

BEIGE & WHITE  
TRIM

WHITE

1/32" SQ. STRINGER

1/64" PLY  
PLATE



1/16" SQ.  
BALSA FUSE LINE

RIB BASE-  
PLATE

1/32" SQ. BALSA  
STRINGERS  
(72)

1/16" SQ. CROSS-BRACE

PLATE

6

6T

1/16" SQ. BALSA BRACES  
6B

6/90

3/32" SQ. LEADING EDGE

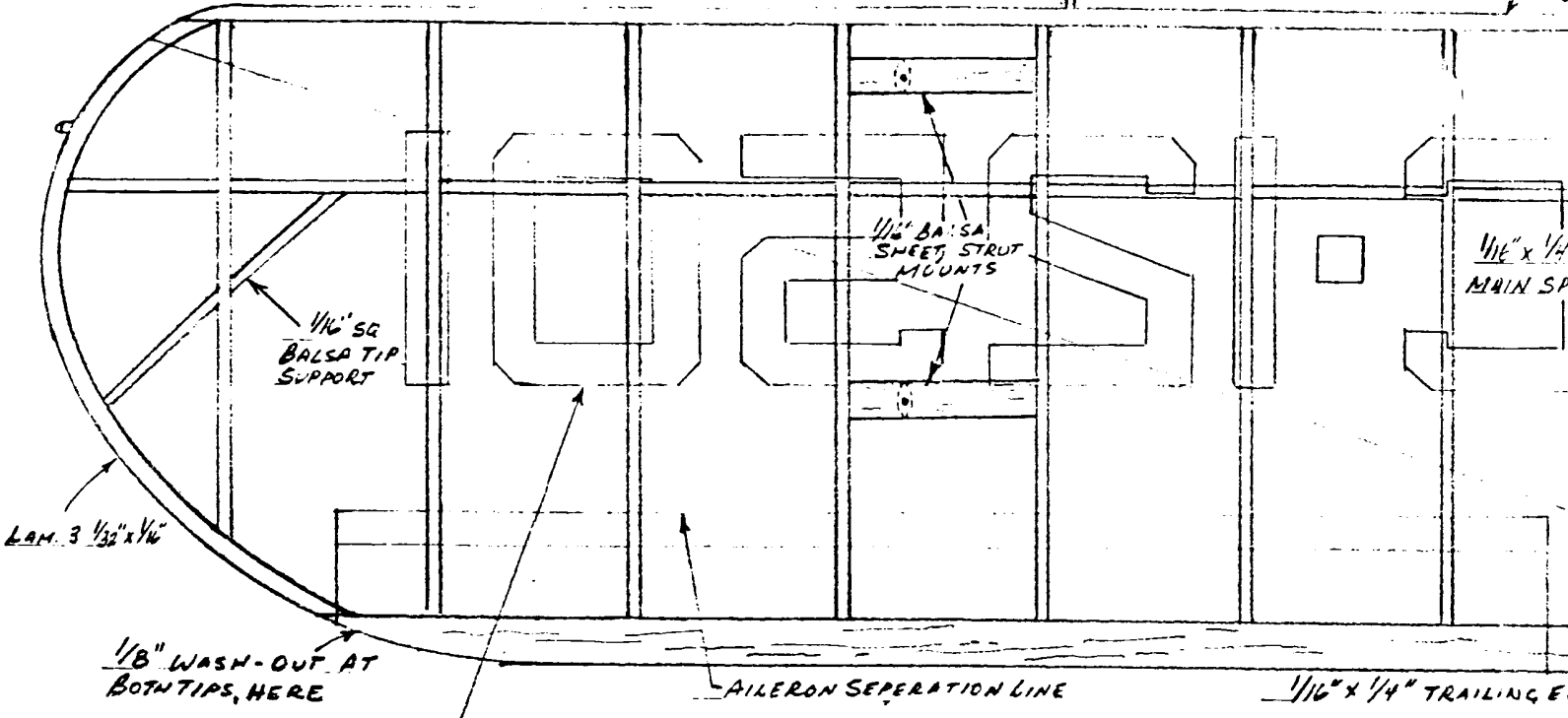
BAGG OR BAMBOO  
CONNECTING LINK,

7/8" DIHEDRAL UNDER WING TIPS

PITOT TUBE PORT WING ONLY LENGTH: 1/4"

END OF PITOT TUBE

3/3



WING REGISTRATION: BLACK, LOCATED ON TOP OF RIGHT WING PANEL ALSO.

1/16" x 1/4" BALSA MAIN SPAR (CUT NOTCH IN BASE RIB TO ACCEPT)

BAMBOO PINS HELP LOCATE AND SECURE WING PANELS

SLICED RIB PATTERN 1/16" BALSA

BOND PAPER WINDOW FRAMES OVER 1/4" SQ. STRUCTURE

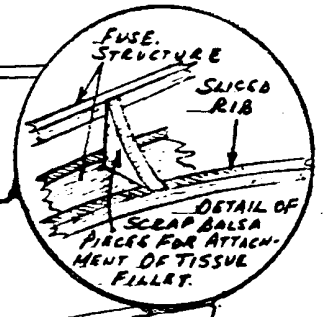
3 MIL. MYLAR CONFL. WRAP

1/16" SQ. BALSA BOTTOM OF SLICED RIB

BASE RIB PATTERN, AND WING LOCATION ON FUSE.

STRIM COLOR

LANDING GEAR BREAK AWAY POINT



TISSUE-LANDING GEAR FUEL ATTACHES FROM HATCHED AREA ON FUSE. TO FIRST SLICED RIB

EXHAUST, ONE ONLY

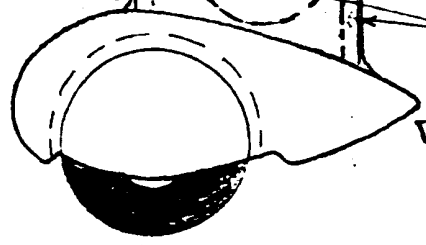
1/16" BALSA SHEET SIDES

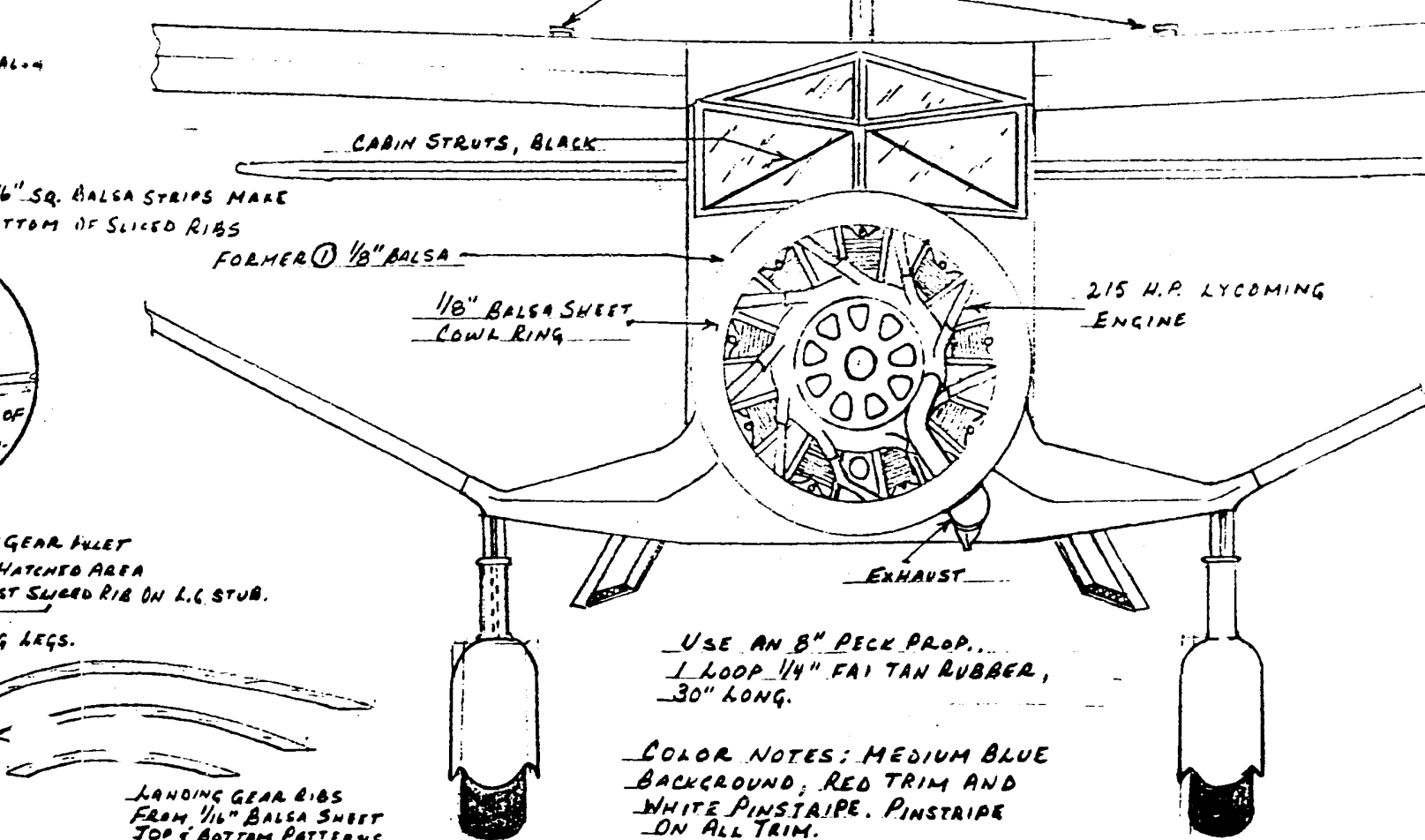
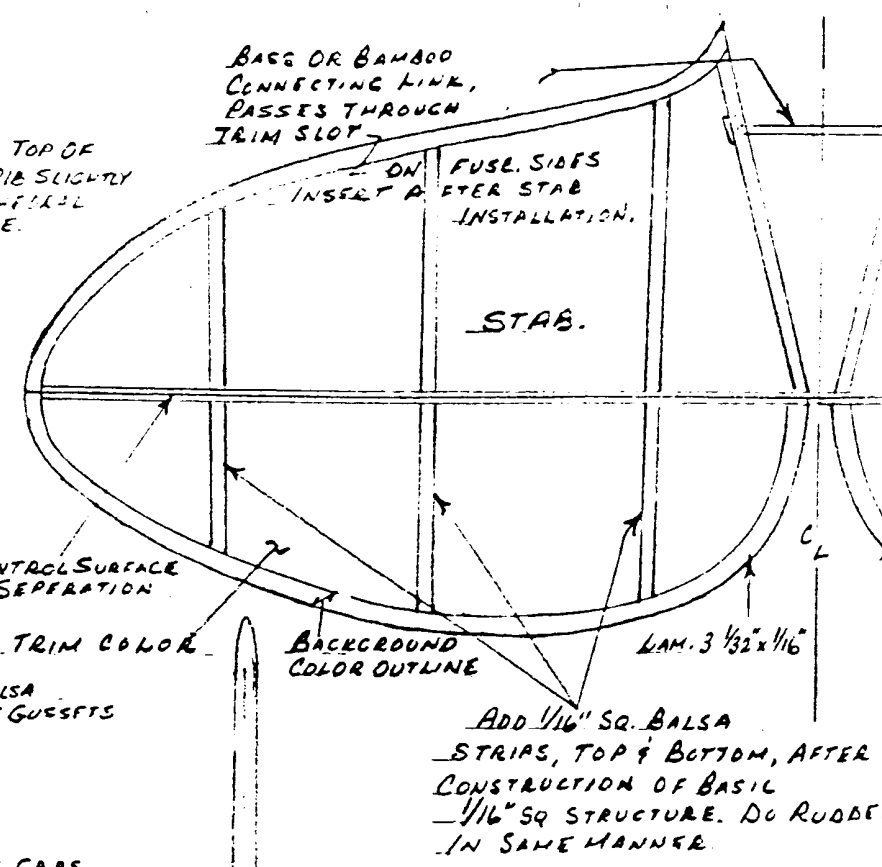
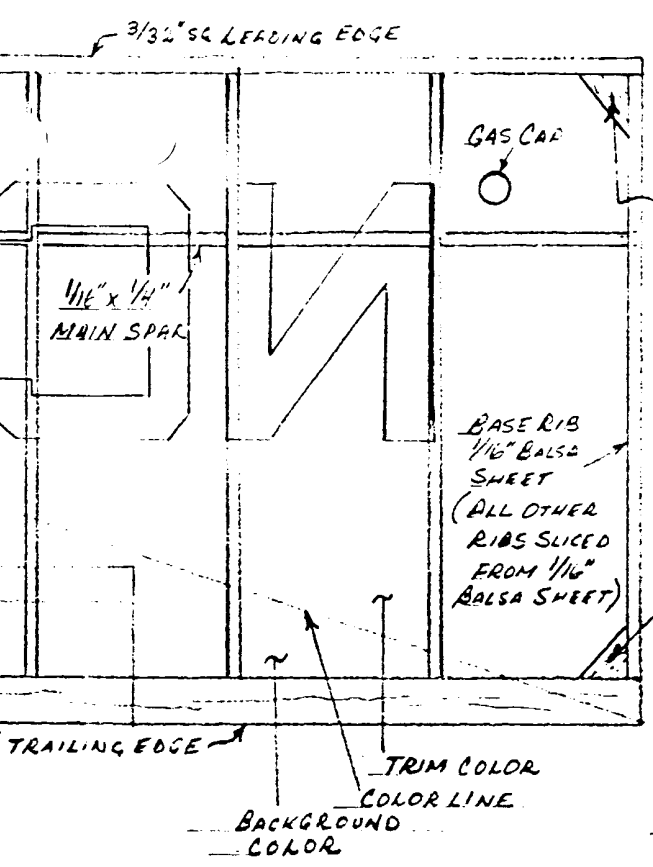
STEP, BOTH SIDES

WRAP WITH BOND PAPER

1/32" x 3/32" PLY SANDWICHED BETWEEN 1/16" SHEET BALSA SIDES.

WHEEL PANT CONSTRUCTION: 3/16" BALSA SHEET CENTER, 1/16" BALSA SHEET SIDES.





REFERENCE: MODEL AIRPLANE NEWS PRESENTS THE BEST OF WYLAN THE STINSON STORY THE CURTISS FAMILY BOOK 4, PAGES 12 AND 13.