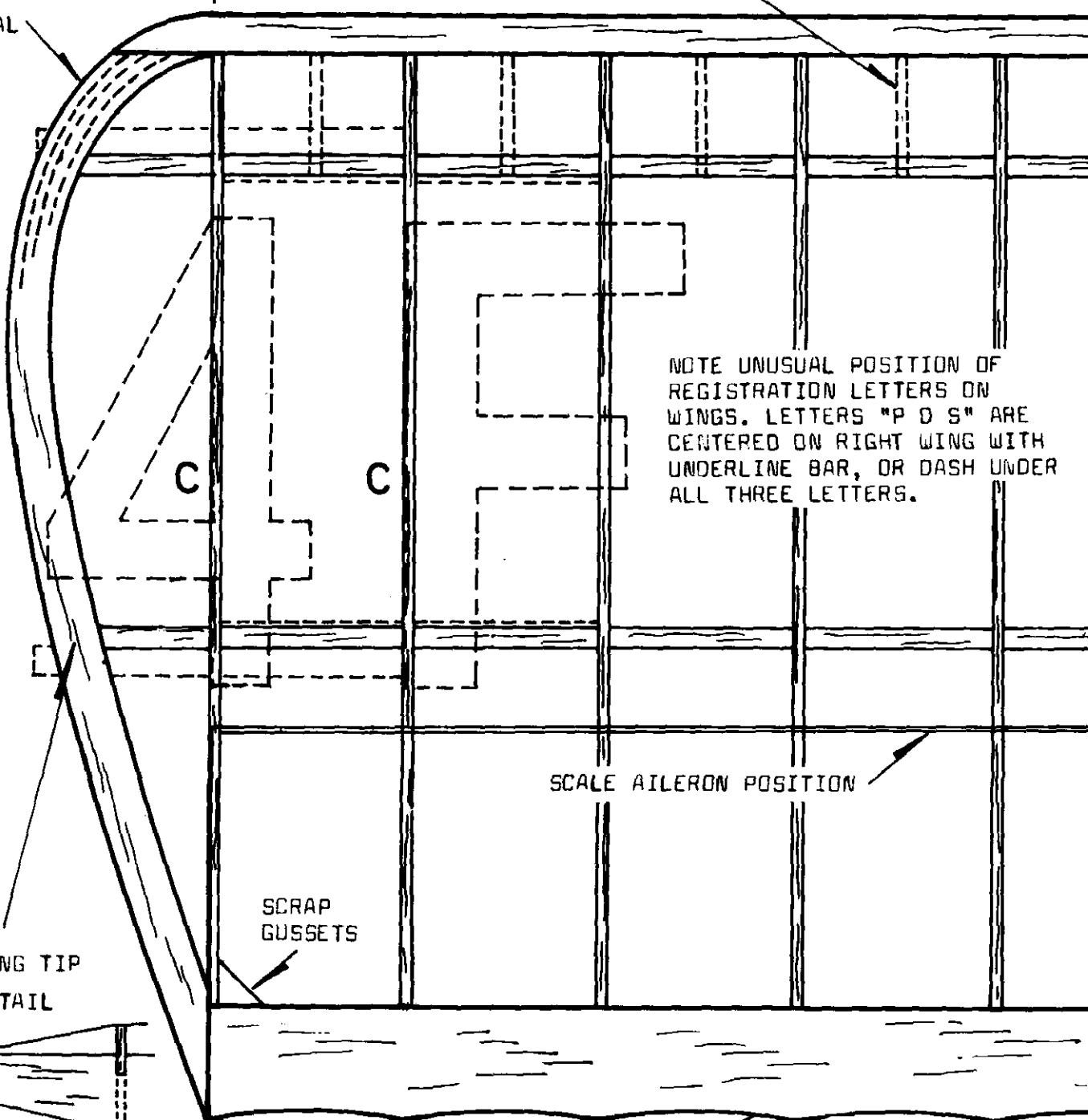


LAMINATED TIPS
OPTIONAL

SCALE FALSE RIBS OPTIONAL



NOTE UNUSUAL POSITION OF
REGISTRATION LETTERS ON
WINGS. LETTERS "P O S" ARE
CENTERED ON RIGHT WING WITH
UNDERLINE BAR, OR DASH UNDER
ALL THREE LETTERS.

SCALE AILERON POSITION

SCRAP
GUSSETS

WING TIP
DETAIL

1/8 SHEET
DOUBLED

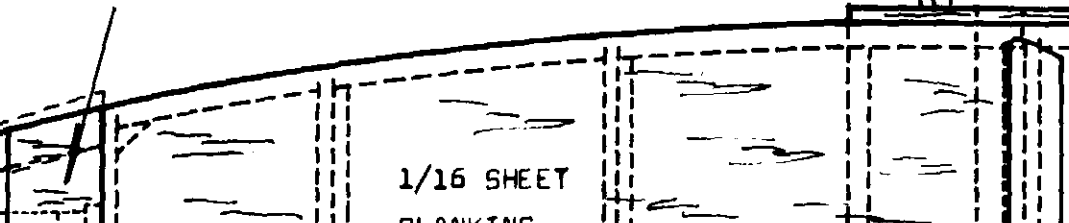
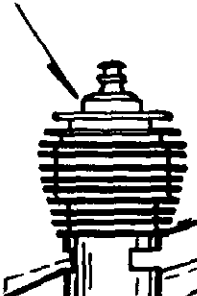
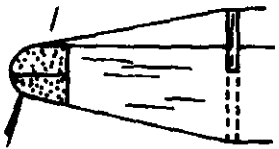
DEVELOP SCALLOPED EDGES BY
SANDING WITH SANDPAPER AROUND
SMALL BOTTLE

SIDE MOUNTED POSITION

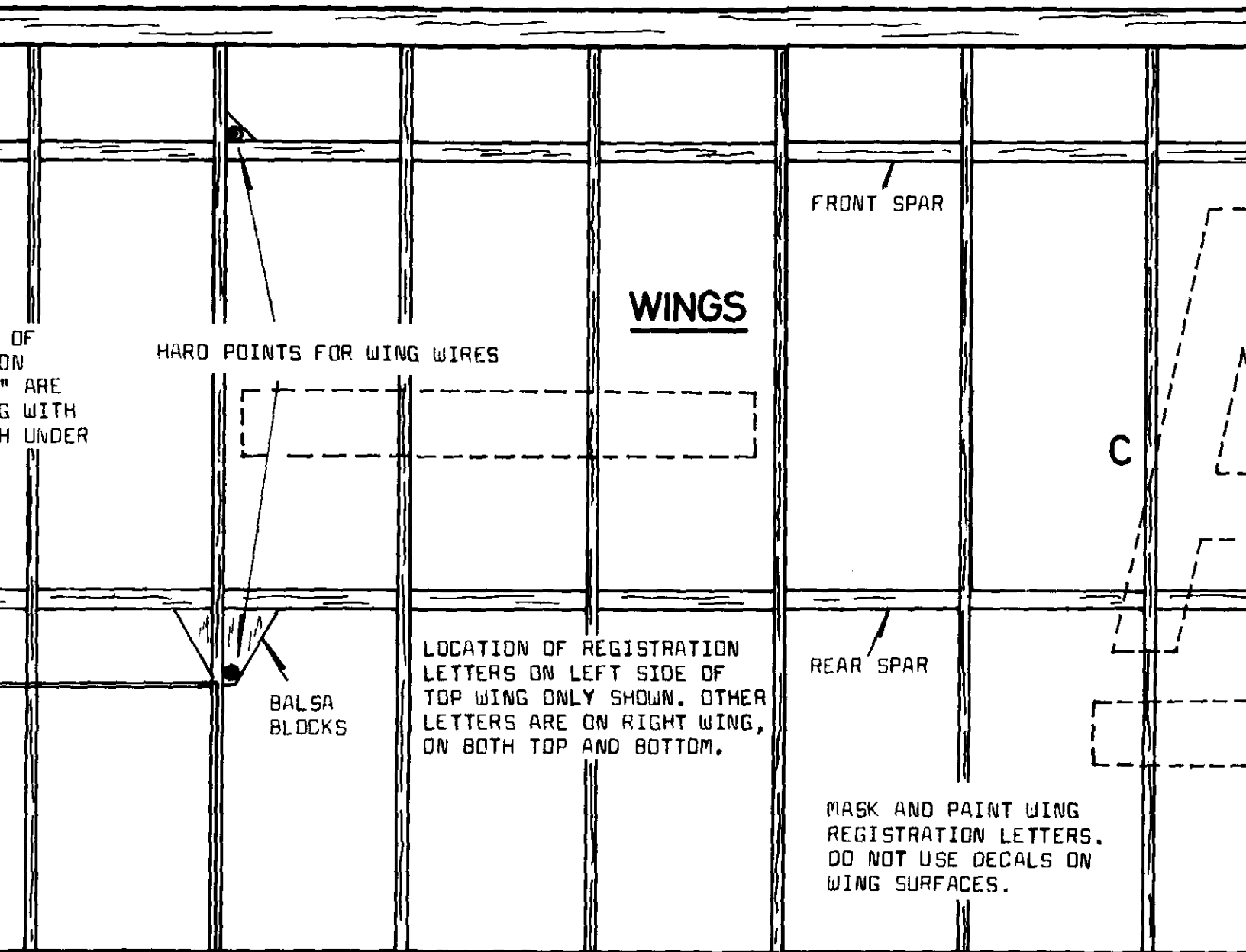
HOLLOWED Balsa BLOCK

SOLDER WASHER
IN PLACE

1/16 SHEET
BLANKING



1/4 x 3/8 LEADING EDGE



OF
ON
ARE
G WITH
H UNDER

HARD POINTS FOR WING WIRES

WINGS

FRONT SPAR

C

BALSA
BLOCKS

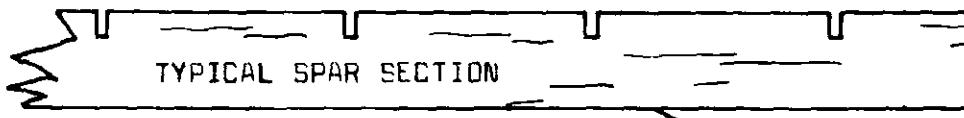
LOCATION OF REGISTRATION
LETTERS ON LEFT SIDE OF
TOP WING ONLY SHOWN. OTHER
LETTERS ARE ON RIGHT WING,
ON BOTH TOP AND BOTTOM.

REAR SPAR

MASK AND PAINT WING
REGISTRATION LETTERS.
DO NOT USE DECALS ON
WING SURFACES.

3/16 x 3/4 TRAIL

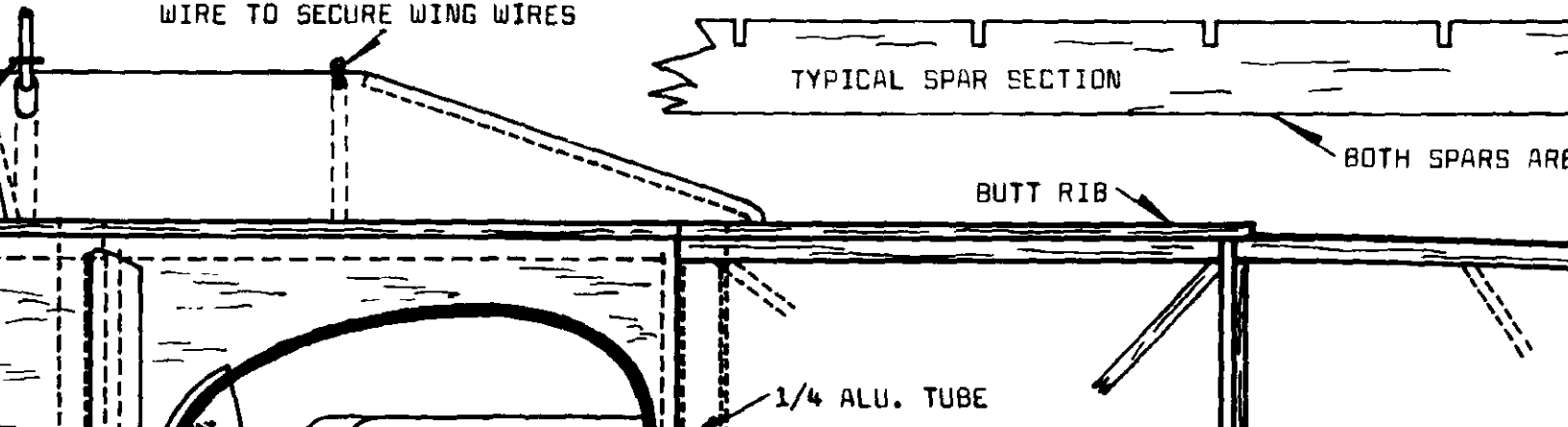
SMALL LOOPS AT EACH END OF
WIRE TO SECURE WING WIRES



TYPICAL SPAR SECTION

BOTH SPARS ARE

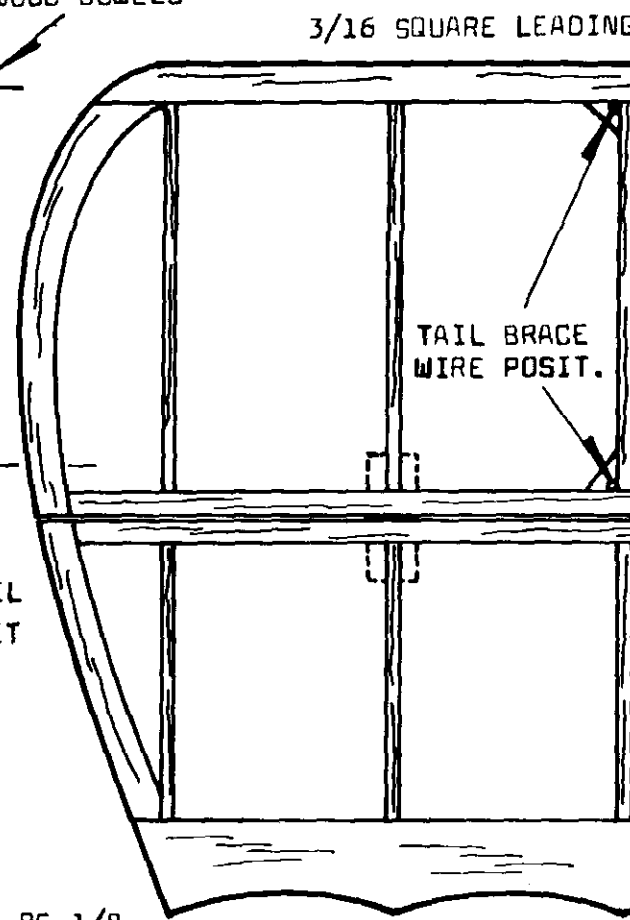
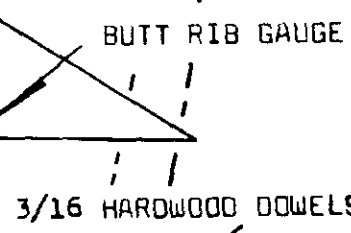
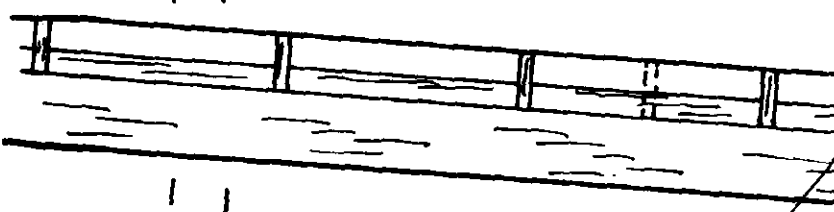
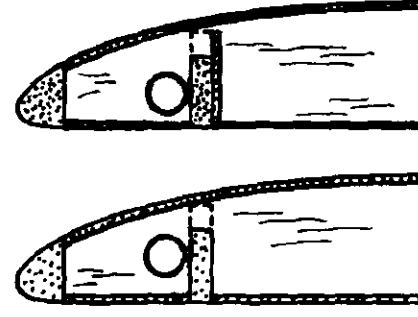
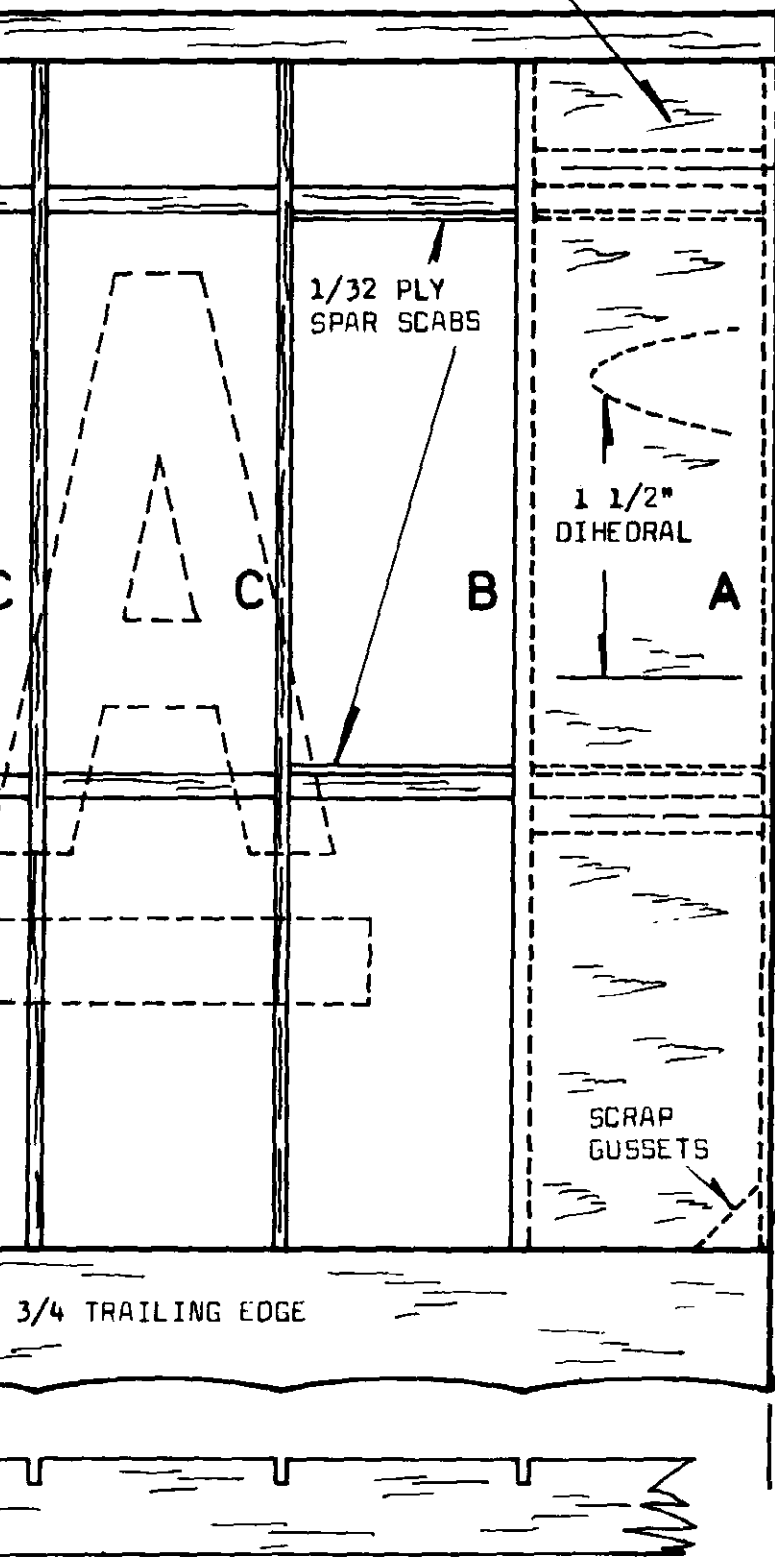
BUTT RIB



1/4 ALU. TUBE

1/32 SHEET BALSA ON BOTH SIDES
OF WING BETWEEN RIBS A & B.

DOWELS MUST FIT SNUGLY INTO
1/4 ALU. TUBES IN FUSELAGE.



TIP DETAIL
1/16 SHEET
DOUBLED

SPARS ARE 1/8 x 1/2 HARD BALSA

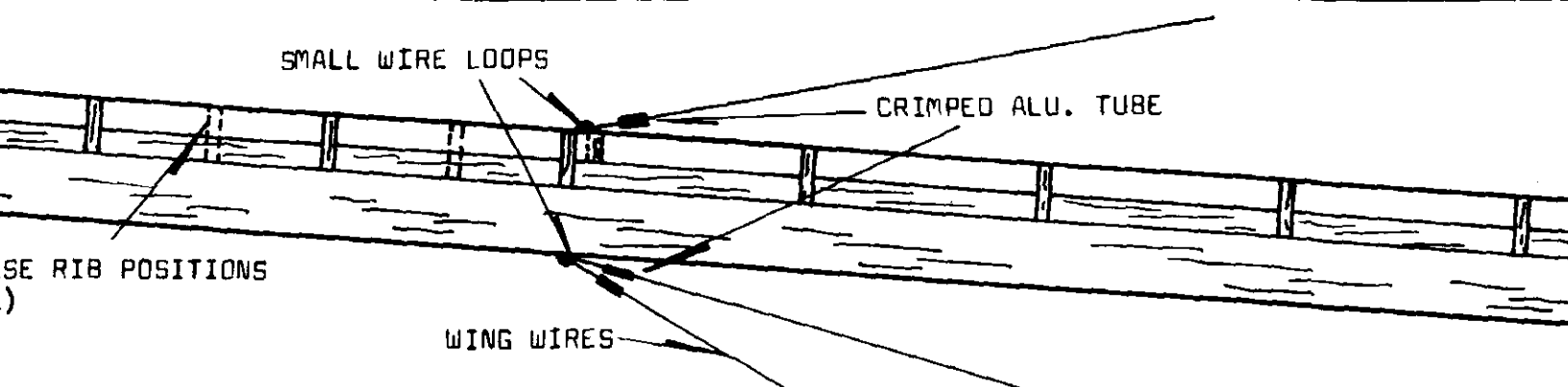
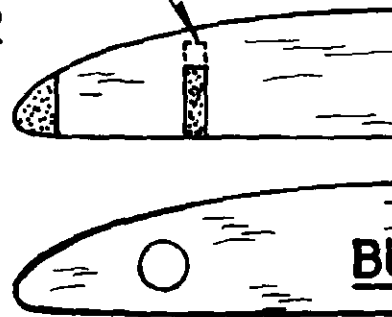
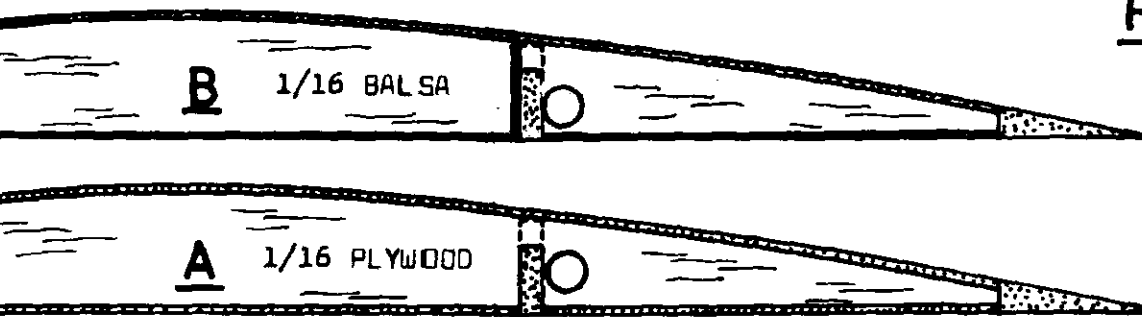
NOTE: LONGERONS MAY BE 1/8
SQUARE SPRUCE IF DESIRED

SAND SCALLOP
AS ON WING

STRINGERS NOT SHOWN

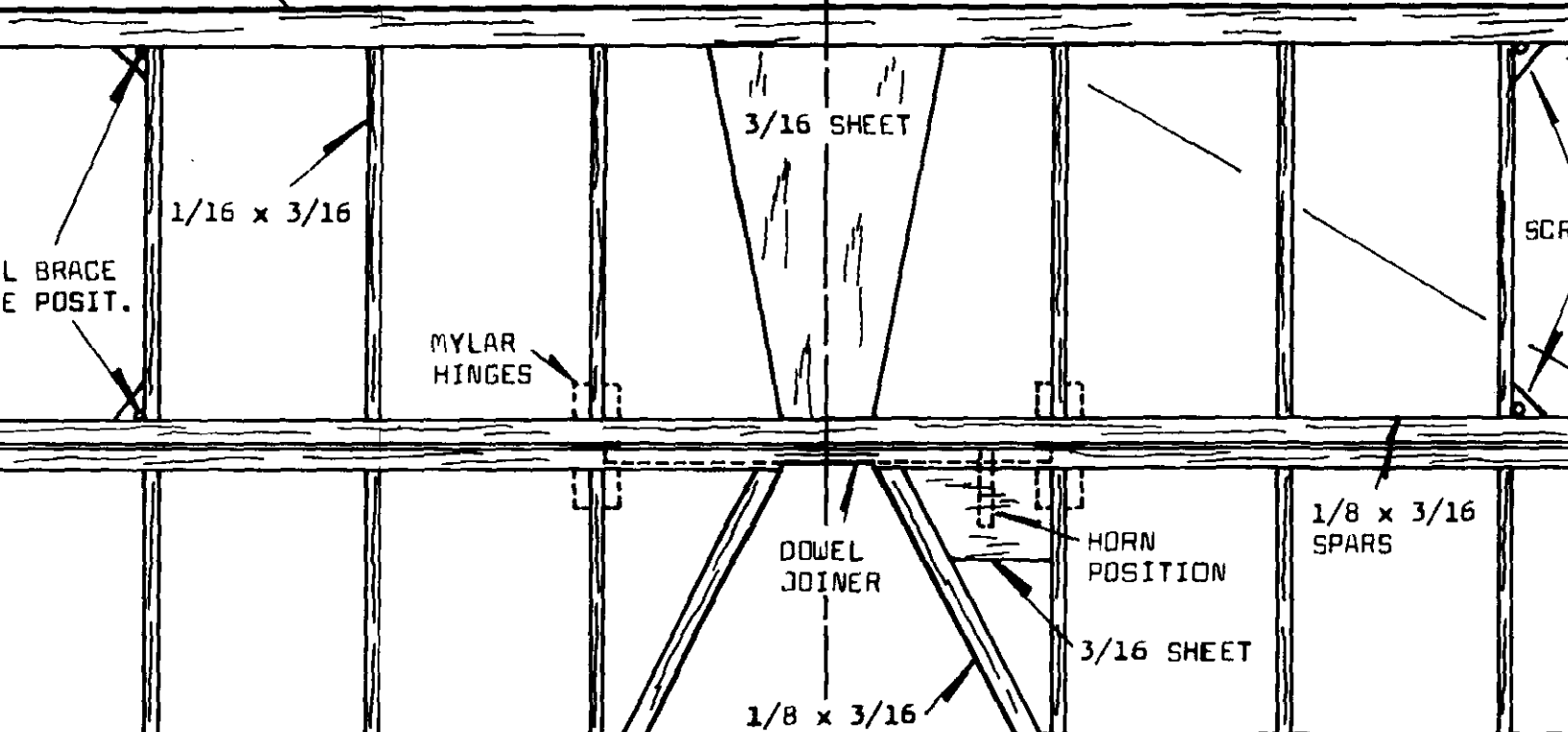
NOTE: IF DESIRED,
SPAR ON TOP BETWEEN
WITH SCRAP

RIBS



NOTE: E
NOT REC

STABILIZER



ELEVATOR



NOTE: COVER ENTIRE MODEL WITH A GOOD GRADE OF TISSUE. SILKSPAN, SILK, OR LIGHT WEIGHT IRON-ON MATERIALS MAY ALSO BE USED.

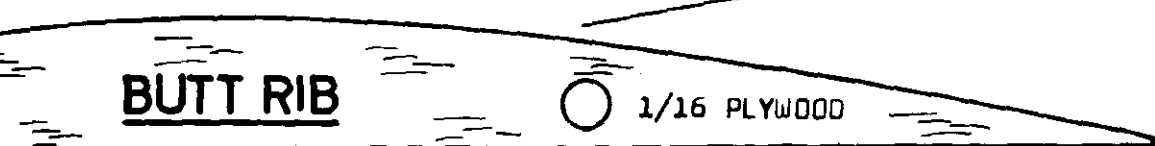
IF DESIRED, FILL IN
TOP BETWEEN RIBS
WITH Balsa

AMA

SOLDER JUNCTURE
WELL AT THIS POINT



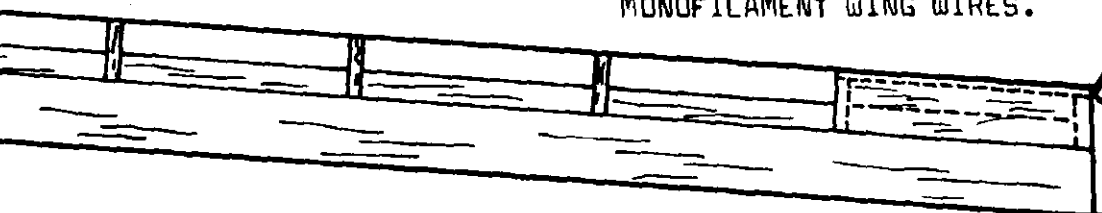
C 1/16 Balsa



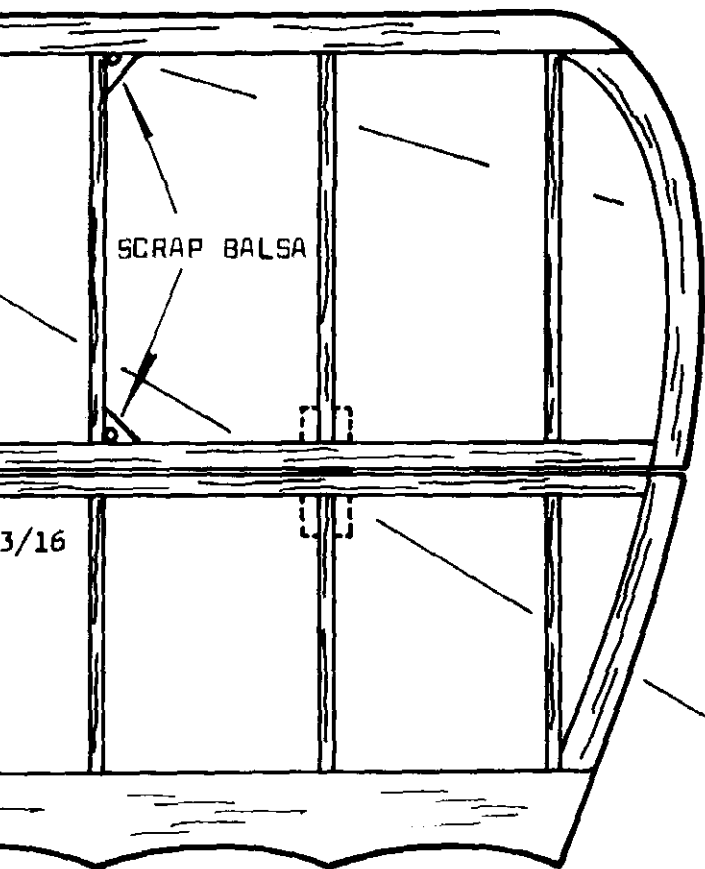
BUTT RIB

○ 1/16 PLYWOOD

NOTE: WINGS ARE RETAINED
IN POSITION BY TENSION OF
MONOFILAMENT WING WIRES.



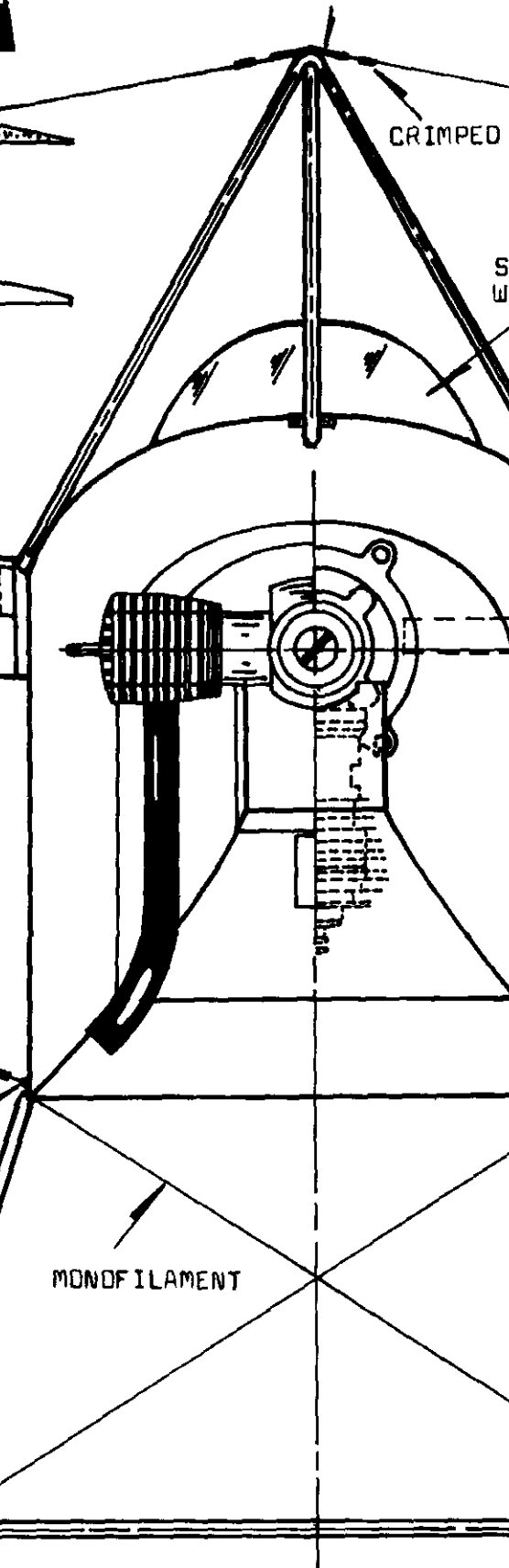
NOTE: ENGINES LARGER THAN .049 ARE
NOT RECOMMENDED FOR USE ON THIS MODEL.



SCRAP Balsa

3/16

1/2 TRAILING EDGE



CRIMPED

AILERON CABLES

SMALL WIRE LOOP

MONOFILAMENT

SOLDER WASHER IN PLACE

1/16 AXLE THRU
3/32 ALU. TUBE

FRONT VIEW

LANDING GEAR WIRES

URE
POINT



CRIMPED TUBE

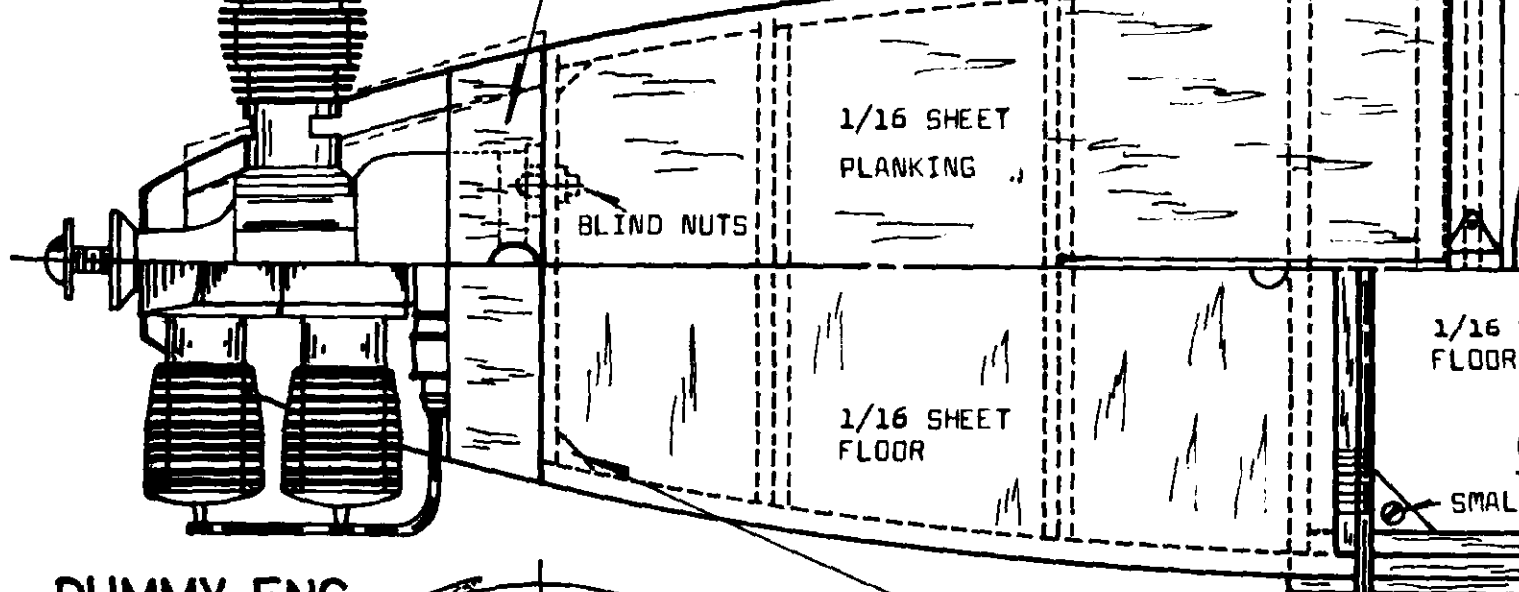
SCALE
WINDSHIELD

WING DOWEL
POSITION

CRIMPED TUBE

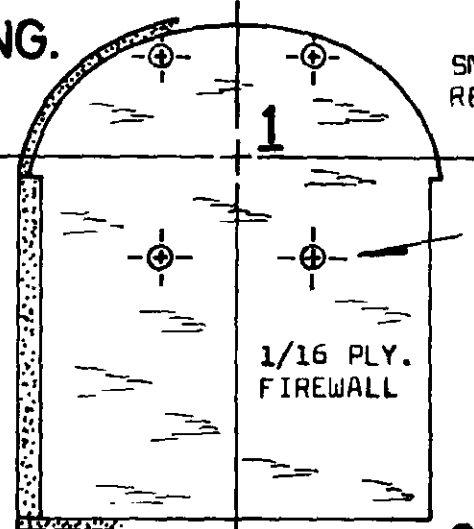
VIEW

RUBBER BAND "SHOCK
CORD" BINDING IS
FUNCTIONAL



DUMMY ENG. (HALF)

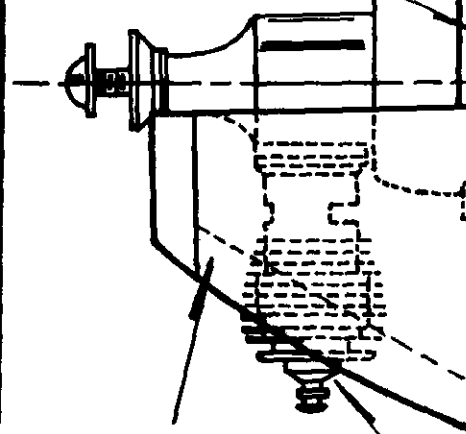
WILLIAMS BROS. 1" UNIVERSAL CYLINDERS



SMALL Balsa TRIANGLES TO REINFORCE PLYWOOD FIREWALL

.049 COX "GOLDEN BEE"

HOLLOWED Balsa BLOCK



MAKE COWL FROM SOFT Balsa BLOCKS AS SHOWN

INVERTED POSITION

ENGINE MOUNT HOLES FOR COX "GOLDEN BEE". MODIFY TO SUIT ENGINE USED.

1/16 WIRE

3/32 ALU. TUBE

SCALE GAS TANK CAP

"HOT STUFF" WIRE IN TUBE TO SECURE

1/16 SHEET PLANKING

FARMAN - MOUSTIQUE -

1/8 SHEET VERTICAL GRAIN

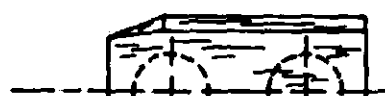
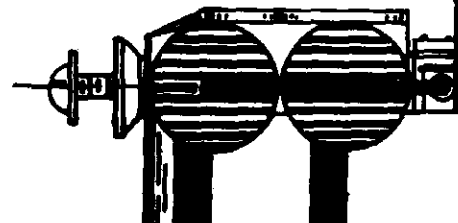
BATTERY

RECD

2A 1/16 SHEET Balsa BOTTOM

SCALE AILERON CABLE POSITION

2B FLOOR HATCH FOR ACCESS TO RADIO



TOP VIEW

BOTTOM VIEW

1/4 ALU. TUBE

1/16 PLY FLOOR HATCH

CANNON BLOCK

HARDWOOD BLOCKS

SMALL WOOD SCREWS

1/16 x 1/8 DIAGONALS

BUTT RIB

3/32 ALU. TUBE

BALSA FAIRING

2

3

GAS CAP

RECOMMENDED BALANCE POINT

5

COCKPIT EDGE PADDING IS ROUND CORD GLUED TO PLANKING AND PAINTED BLACK

6

FIRE CURVE

3C

RACING NUMBERS ON BOTH SIDES OF FUSELAGE

STRINGERS NOT FOR CLARITY

1/4 ALU. TUBE

SWITCH POSITION
ACE SHOWN

GLUE TOGETHER

1/8 SHEET

SCALE STEP

RECEIVER

SERVO

HARDWOOD BLOCKS

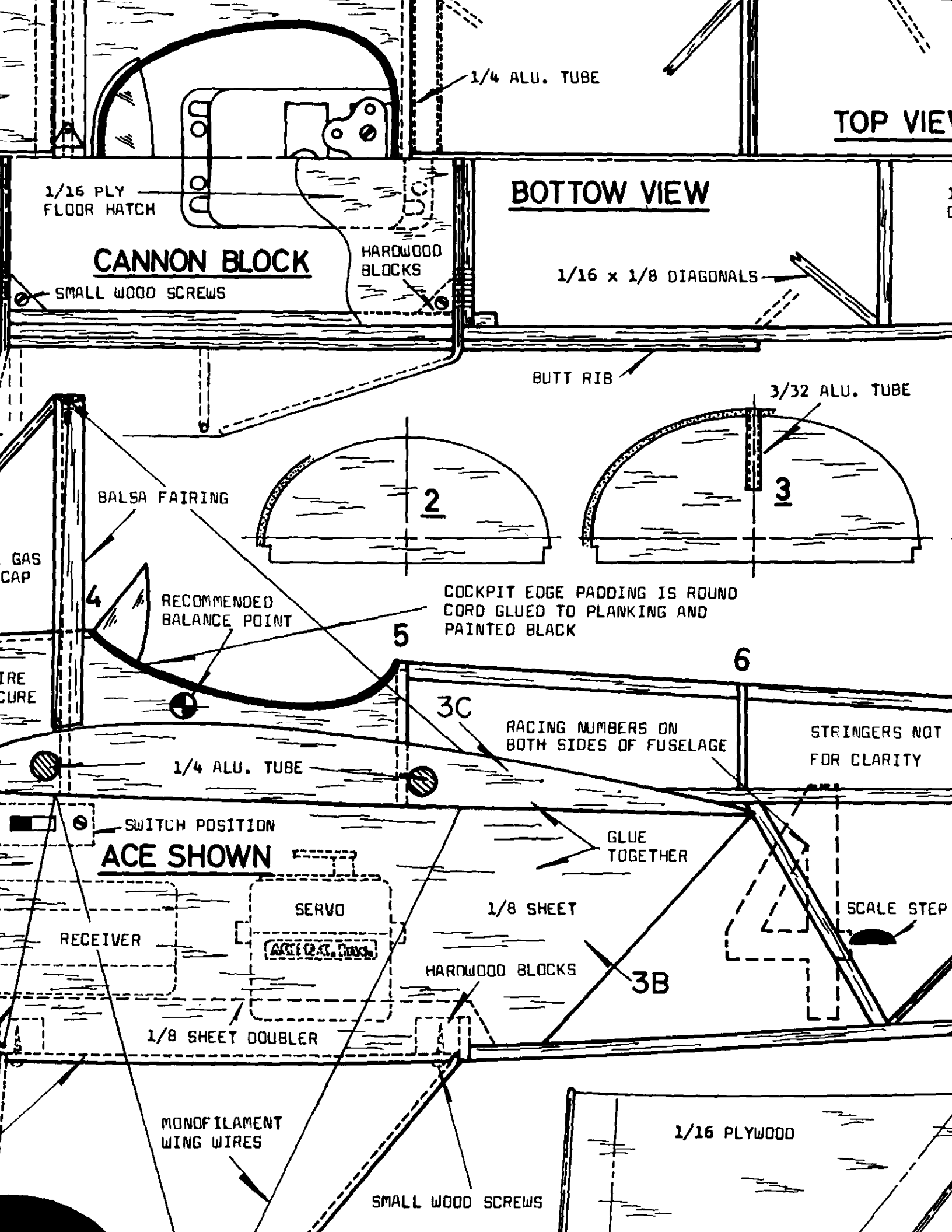
3B

1/8 SHEET DOUBLER

MONOFILAMENT WING WIRES

SMALL WOOD SCREWS

1/16 PLYWOOD



TOP VIEW

STRINGERS NOT SHOWN FOR CLARITY

1/8 SQUARE CROSSMEMBERS

1/8 SQ. LONGERONG AND CROSS MEMBERS

TUBE

FORMERS

1/16 x 1/8 STRINGERS

BRASS SAND B STRING SHOWN

1/4 D.D. ALU. TUBE

FORMERS ARE 1/16 BALSA UNLESS OTHERWISE INDICATED

3/32 ALU. TUBE

RETAIN WIRE IN TUBE WITH "HOT STUFF"

STRINGERS NOT SHOWN FOR CLARITY

REGISTRATION LETTERS ON BOTH SIDES OF FUSELAGE

SCALE STEP

1/8 SQ. LONGERONS AND UPRIGHTS

SIDE VIEW

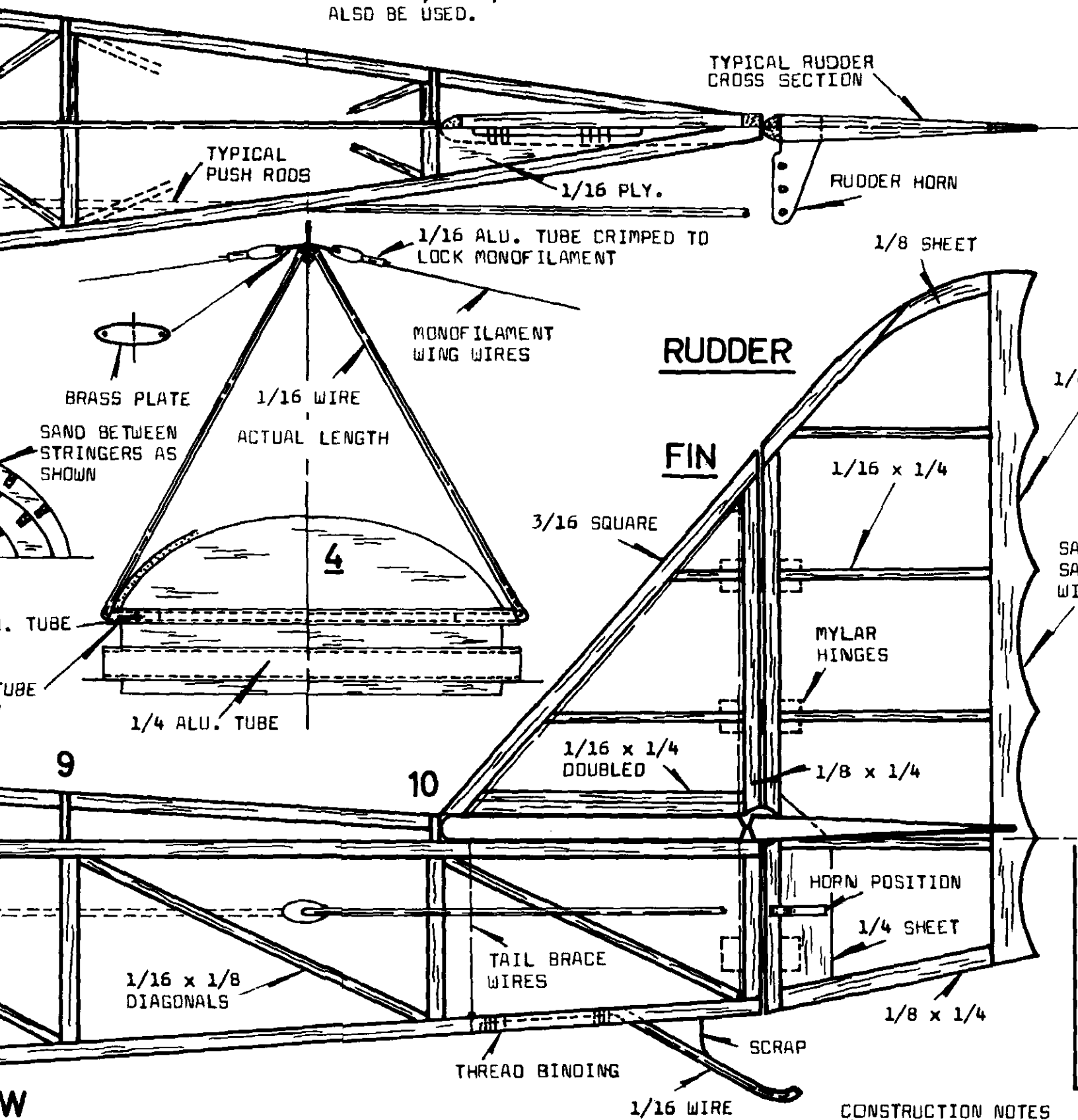
1/8 SHEET

3A

COLOR AND

BILL HANNAN, OF ESCON CONSIDERABLE RESEARCH AND DETERMINED THE AU DESCRIBED BELOW. HIS IN TWO PARTS IN THE A ISSUES OF R/C SPORTMA

NOTE: COVER ENTIRE MODEL WITH A GOOD GRADE OF TISSUE. SILKSPAN, SILK, OR LIGHT WEIGHT IRON-ON MATERIALS MAY ALSO BE USED.



CONSTRUCTION NOTES

MODEL IS CONSTRUCTED IN CONVENTIONAL MANNER BY JOINING TWO FUSELAGE SIDES DIRECTLY ON TOP OF EACH OTHER. THE NOSE SECTION IS 1/8 SHEET WITH GLUE. THIS IS IMPORTANT FOR NEGOTIATING THE TURNING SHOWN ON TOP VIEW. BE SURE ALUMINUM TUBING IS CORRECTLY INSTALLED AS THEY DETERMINE THE WING RIGGING. THIS ALSO APPLIES TO THE WING ATTACHMENT ON BUTT OF WING PANELS. WINGS ARE ATTACHED TO THE FUSELAGE AND NOTCHED SPARS ADD GREAT STRENGTH. AN IMPORTANT FEATURE IS THE MONOFILAMENT WING

COLOR AND SCALE DATA SOURCE

OF ESCONDIDO, CALIFORNIA, HAS DONE RESEARCH ON THE FARMAN MOUSTIQUES AND DETERMINED THE AUTHENTICITY OF THOSE COLORS. HIS INFORMATIVE ARTICLE APPEARS IN THE AUGUST AND SEPTEMBER 1979 ISSUE OF SPORTSMAN MAGAZINE AND CAN BE USED

SOLDER WASHER IN PLACE

1/16 AXLE THRU
3/32 ALU. TUBE

FRONT VIEW

LANDING GEAR WIRES

1/16 WIRE ACTUAL LENGTHS

FRONT WING WIRE

1/16 WIRE AC

FRONT

REAR

1/8 x 3/8

SAND SCALLOPS IN
SAME MANNER AS ON
WING AND ELEVATOR

DETAIL ON BOTTOM
OF RUDDER SHOWN



DOUBLE SIZE

1936 F

GENERAL A
BY BILL HA

DATA:

WING SPAN

WEIGHT: 1

POWER: 2

F.451
Nº 6

IN NOTES

CONVENTIONAL MANNER, BUILD-
ACTLY ON THE PLAN. NOTE
ET WITH GRAIN VERTICAL.
IATING THE SHARP BEND
ALUMINUM TUBES ARE ACC-
ETERMINE ACCURACY OF THE
TO THE WING DOWELS LO-
S. WINGS ARE CONVENTIONAL
STRENGTH. A MOST IMPORT-
MENT WING WIRE SYSTEM.

The Classic -

FARMAN

“MOUSTIQUE”

DESIGNED & DRAWN BY: Col. H.G. Bowers

R/C SPORTS



WING WIRE TRIPOD

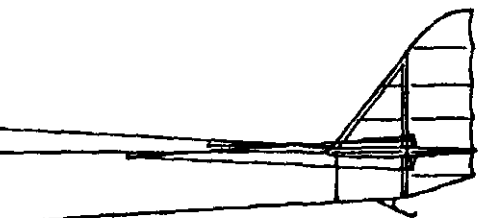
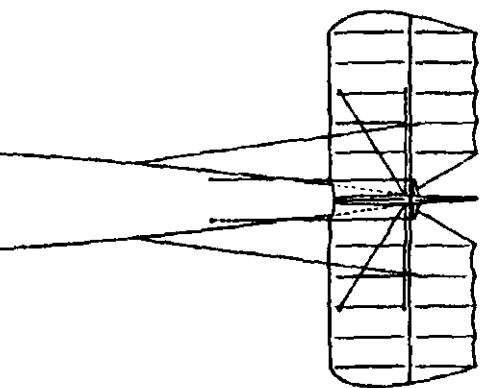
WIRE ACTUAL LENGTH

1936 FARMAN 451

GENERAL ARRANGEMENT DWG
BY BILL HANNAN

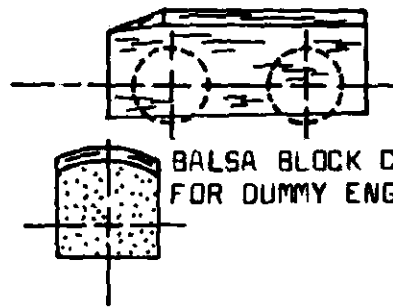
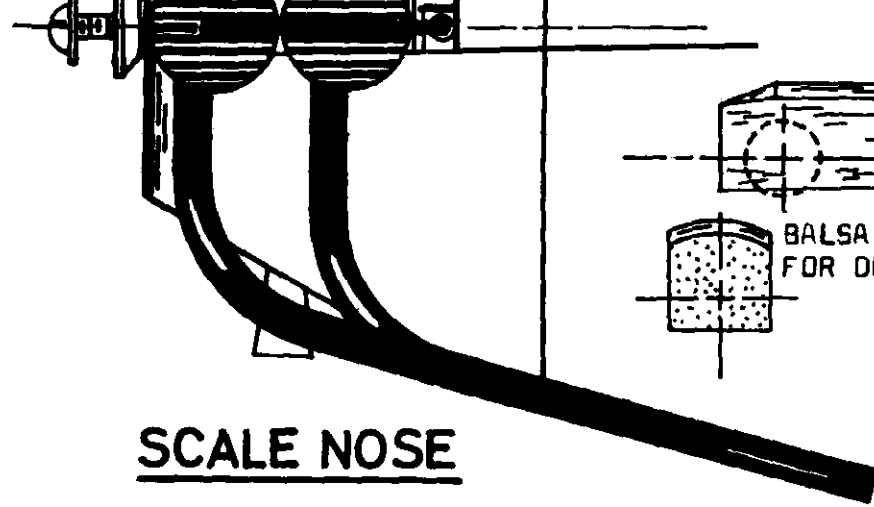
DATA:

WING SPAN: 8 METERS
WEIGHT: 140 KILOGRAMS
POWER: 25 H.P. AVA

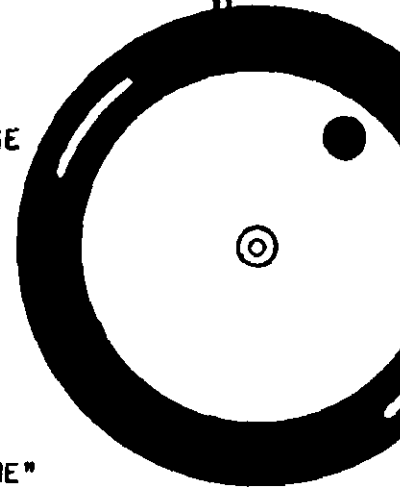


2B

FLOOR HATCH FOR
ACCESS TO RADIO



BALSA BLOCK CRANKCASE
FOR DUMMY ENGINE

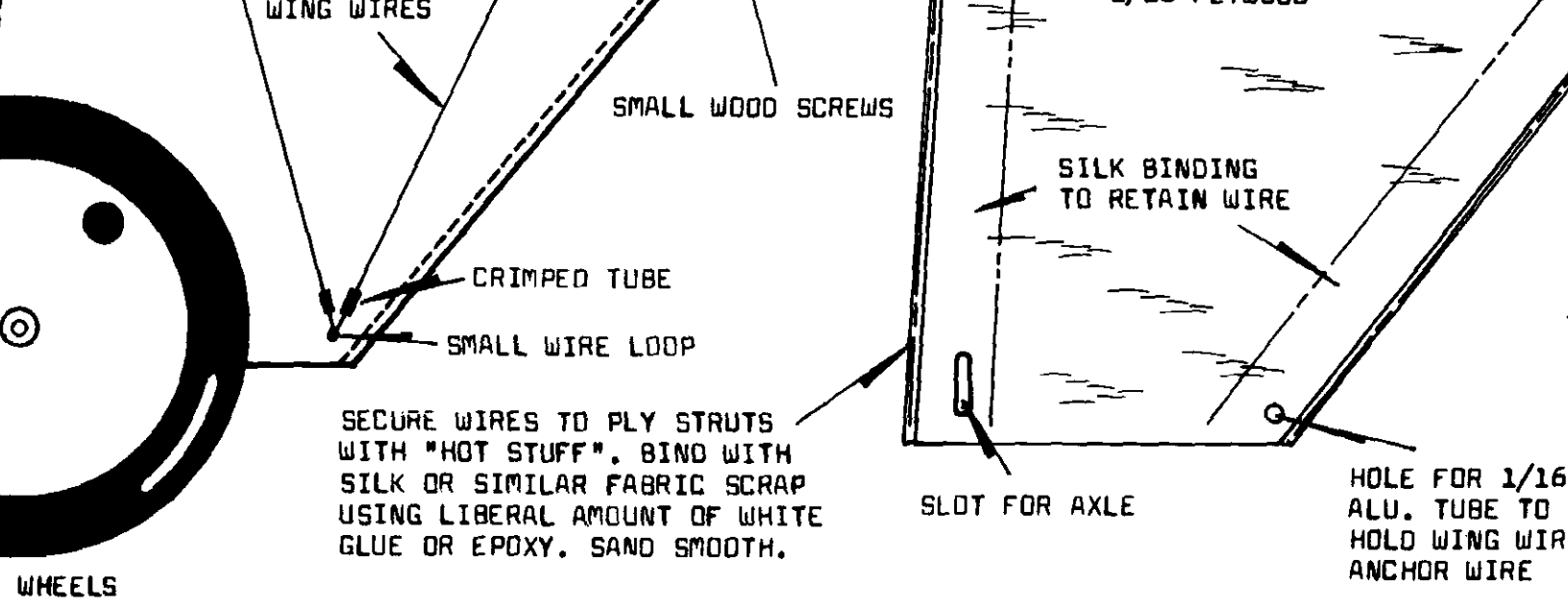


SCALE NOSE

4 CYLINDER
25 H.P. AVA
ENGINE SHOWN

WILLIAMS BROTHERS "OLD TIME"
SCALE WHEELS SUGGESTED

2 1/2" WHEELS



WING WIRES

SMALL WOOD SCREWS

CRIMPED TUBE

SMALL WIRE LOOP

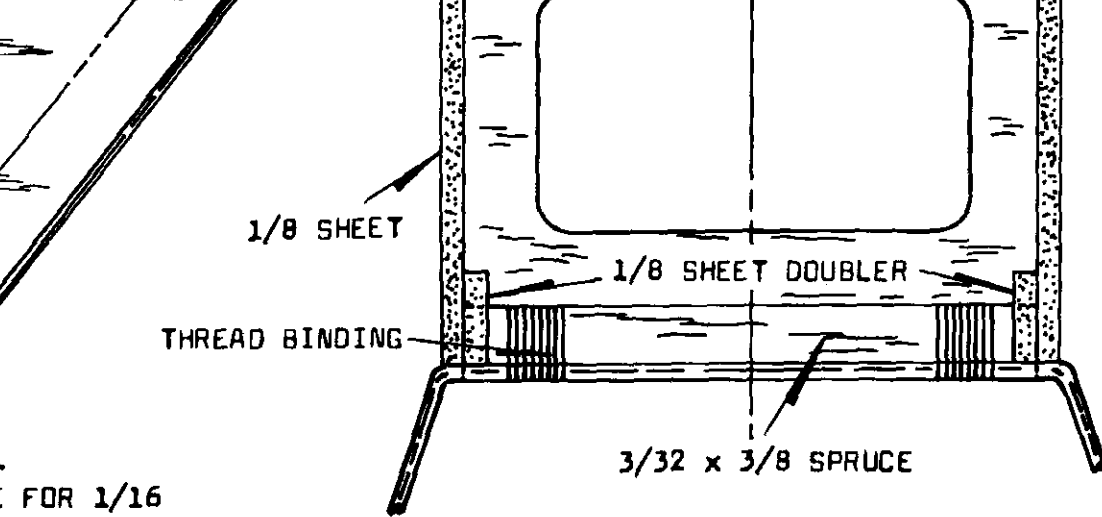
SILK BINDING
TO RETAIN WIRE

SLOT FOR AXLE

HOLE FOR 1/16
ALU. TUBE TO
HOLD WING WIRE
ANCHOR WIRE

SECURE WIRES TO PLY STRUTS
WITH "HOT STUFF". BIND WITH
SILK OR SIMILAR FABRIC SCRAP
USING LIBERAL AMOUNT OF WHITE
GLUE OR EPOXY. SAND SMOOTH.

WHEELS



FOR 1/16
TUBE TO
WING WIRE
OR WIRE

CONSIDERABLE RESEARCH
AND DETERMINED THE AU
DESCRIBED BELOW. HIS
IN TWO PARTS IN THE A
ISSUES OF R/C SPORTMA
AS AN IMPECCABLE SOUR

1. ACFT. NO. 6, F-APD
ALL RED WITH WHITE
2. LUCIEN BOSSOUTROT,
A MOUSTIQUE WITH A
WINGS AND TAIL. RE
COLOR WAS BLACK.
3. ONE MOUSTIQUE WAS
REGISTRATION MARKI
4. A FOURTH MACHINE W
FABRIC, CLEAR DOPE

RESEARCH ON THE FARMAN MOUSTIQUES
ED THE AUTHENTICITY OF THOSE COLORS
LOW. HIS INFORMATIVE ARTICLE APPEARS
IN THE AUGUST AND SEPTEMBER 1979
C SPORTSMAN MAGAZINE AND CAN BE USED
ABLE SOURCE FOR SCALE DATA.

6, F-APDS, BELONGED TO JOHANNY BURTIN.
WITH WHITE MARKINGS.

SSOUTROT, FARMAN FACTORY PILOT, FLEW
UE WITH A CREAM FUSELAGE, AND RED
TAIL. REGISTRATION IS UNKNOWN, BUT
BLACK.

IQUE WAS ENTIRELY SILVER, WITH BLACK
ION MARKINGS, WHICH WERE UNKNOWN.

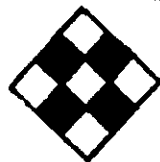
MACHINE WAS DESCRIBED AS BEING NATURAL
LEAR DOPEO, WITH BLACK MARKINGS.

URATELY INSTALLED AS THEY DETERMINE
RIGGING. THIS ALSO APPLIES TO THE WI
CATED ON BUTT OF WING PANELS. WINGS
AND NOTCHED SPARS ADD GREAT STRENGTH
ANT FEATURE IS THE MONOFILAMENT WING
AS TENSION SECURES THE WING IN PLACE
AND HOLDS DIHEDRAL IN PLACE. SMALL SE
ALUMINUM TUBE CRIMPED WITH NEEDLE NO
SECURELY LOCK MONOFILAMENT IN PLACE.
SMALL RADIO EQUIPMENT IS SUITABLE AND
WILL DEPEND UPON THE SET SELECTED. SI
OF ONLY TWO CHANNELS, HOWEVER, A THI
ED FOR THROTTLE IF DESIRED. WE DO NO
ERONS AS THEY ADD UNNECESSARY WEIGHT
NEEDED FOR FLYING. TAIL SURFACES ARE
AND THE MODEL MAY BE COVERED WITH A
TISSUE, LIGHT WEIGHT SILKSPAN, SILK,
MATERIALS. WE DO NOT RECOMMEND THE U
EXCEEDING .049 IN SIZE.

DETERMINE ACCURACY OF THE
TO THE WING DOWELS LO-
S. WINGS ARE CONVENTIONAL
STRENGTH. A MOST IMPORT-
MENT WING WIRE SYSTEM,
IN PLACE ON THE FUSELAGE
. SMALL SECTIONS OF 1/16
NEEDLE NOSE PLIERS WILL
IN PLACE. ANY OF THE FINE
ITABLE AND INSTALLATION
LECTED. SUGGEST THE USE
ER, A THIRD MAY BE ADD-
WE DO NOT RECOMMEND AIL-
RY WEIGHT AND ARE NOT
FACES ARE CONVENTIONAL
O WITH A GOOD GRADE OF
AN, SILK, OR IRON-ON
END THE USE OF ENGINES

MOUSTIQUE

DESIGNED & DRAWN BY: Col. H.G. Bowers
KIT ENGINEERED BY: Herb Clukey
FOR 2-3 CHANNEL R/C SPORT SCALE
1-1/2" SCALE FOR .049 ENGINES
39-1/8" WINGSPAN, 30-1/8" LENGTH, 17 Oz



FLYLINE MODEL

UE



Bowers, U.S.A.F., Ret.

Key

SCALE

S

, 17 Oz. WEIGHT

MODELS, INC.
