

2 LAMINATIONS OF
 $1/32" \times 3/32"$
BASSWOOD

$3/16" \times 3/8"$ BALSA L.
TAPER TO $3/16"$

$1/32" \times 1/4"$
BALSA RIBS

$1/16"$ SQ.
BALSA

$1/16" \times 1/4"$
BALSA

AILERON
TRIM LINE

BALSA
FILL

STAB.

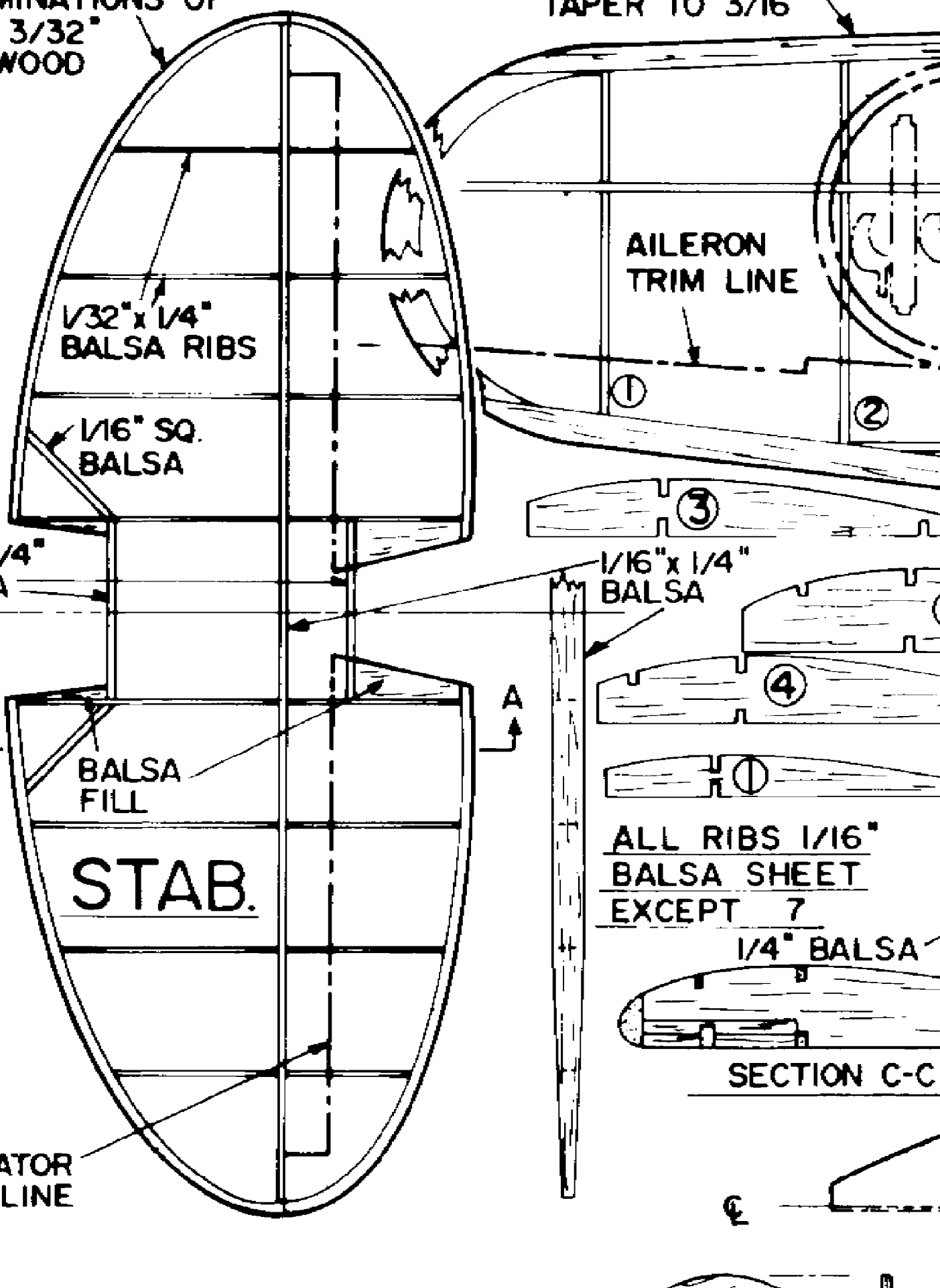
ELEVATOR
TRIM LINE

$1/16" \times 1/4"$
BALSA

ALL RIBS $1/16"$
BALSA SHEET
EXCEPT 7

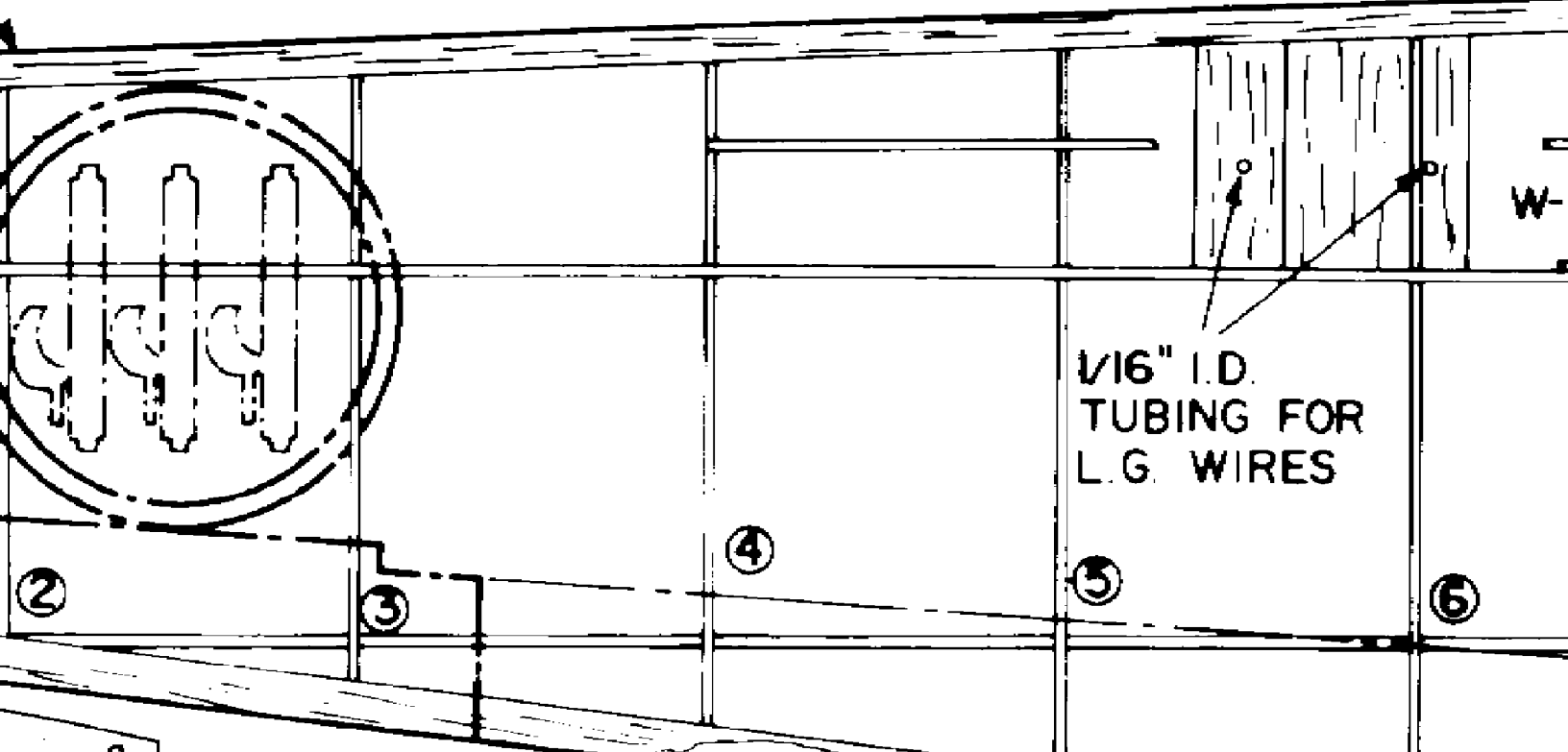
$1/4"$ BALSA

SECTION C-C



A L.E.

→ C



1/16" I.D.
TUBING FOR
L.G. WIRES

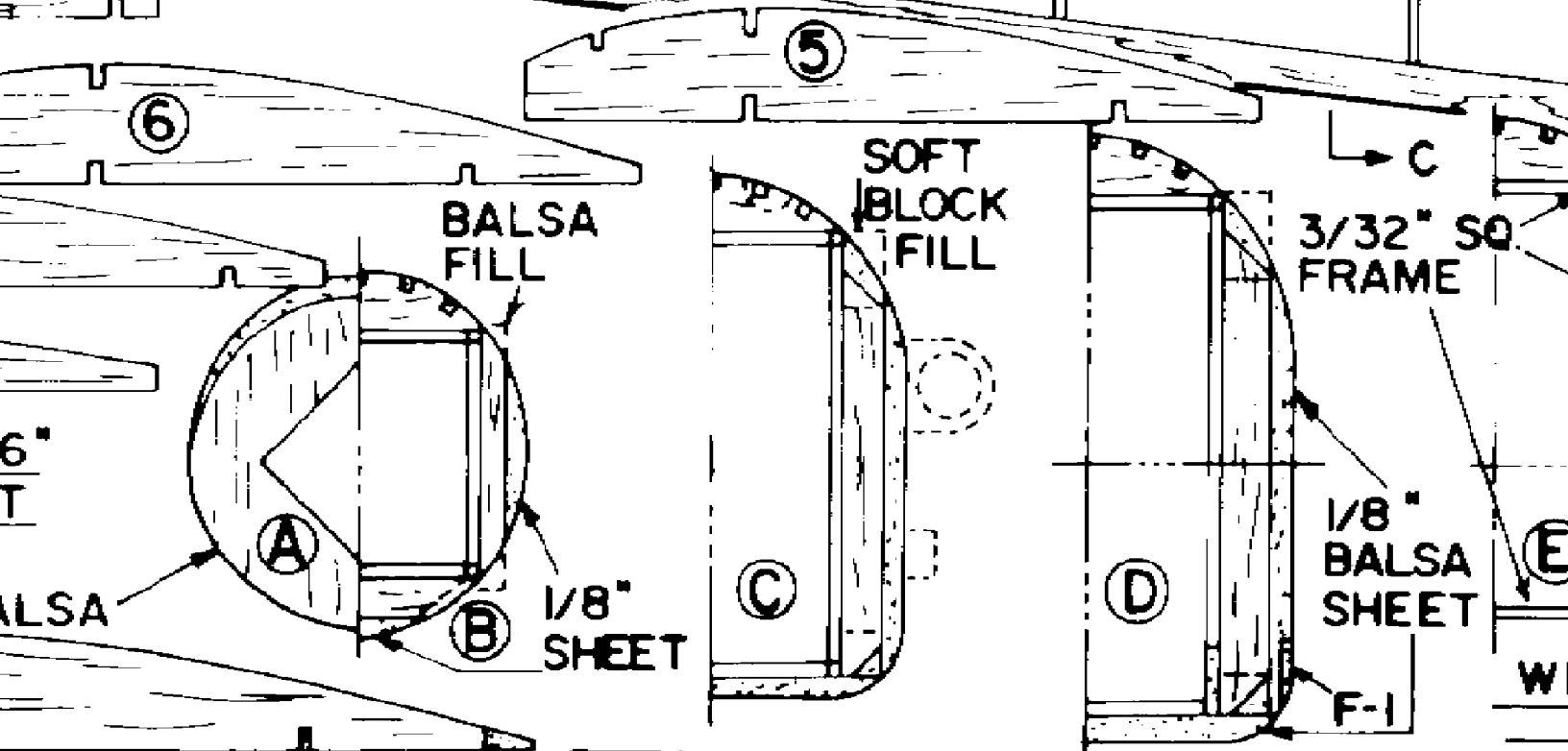
②

③

④

⑤

⑥



BALSA
FILL

SOFT
BLOCK
FILL

3/32" SQ
FRAME

6"
T

BALSA

Ⓐ

Ⓑ

1/8"
SHEET

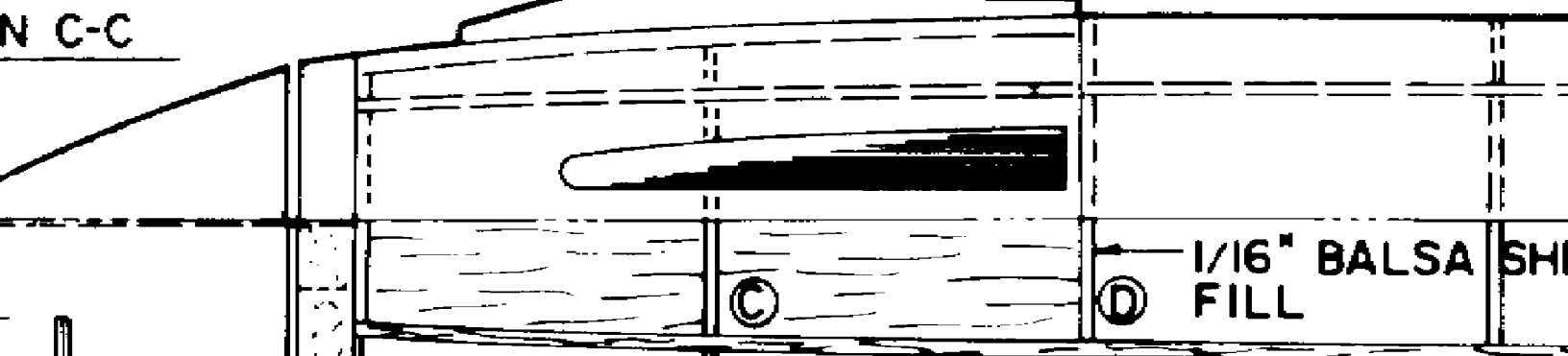
Ⓒ

Ⓓ

1/8"
BALSA
SHEET

Ⓔ

F-1



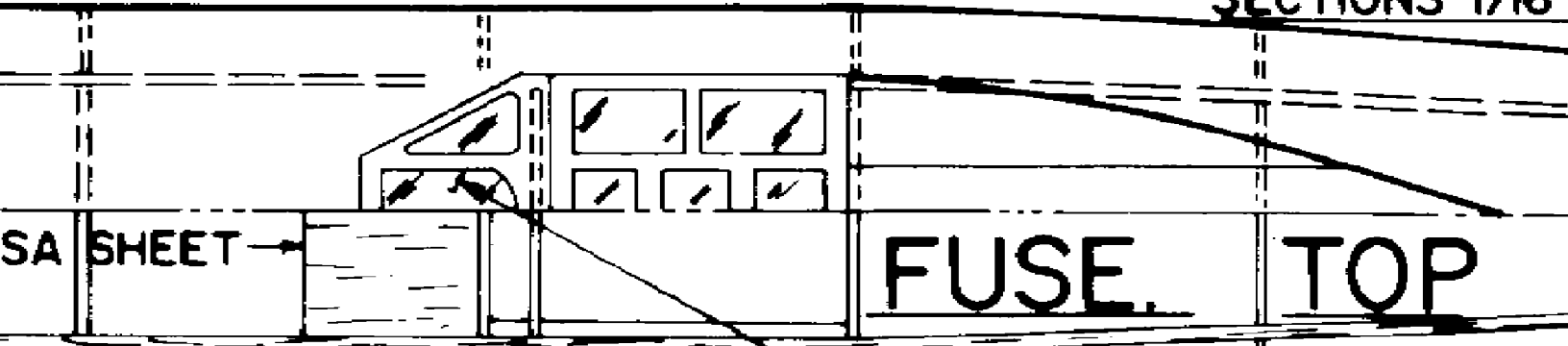
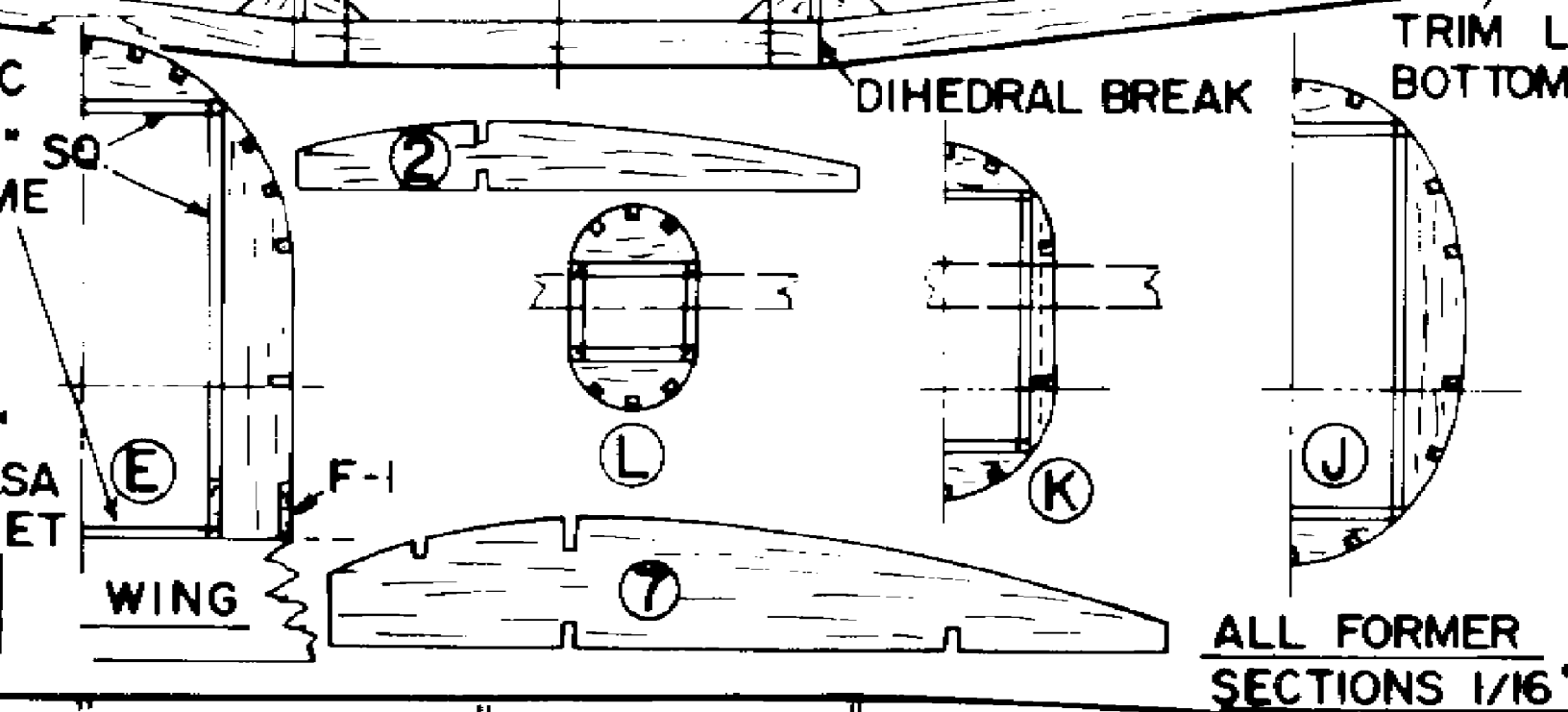
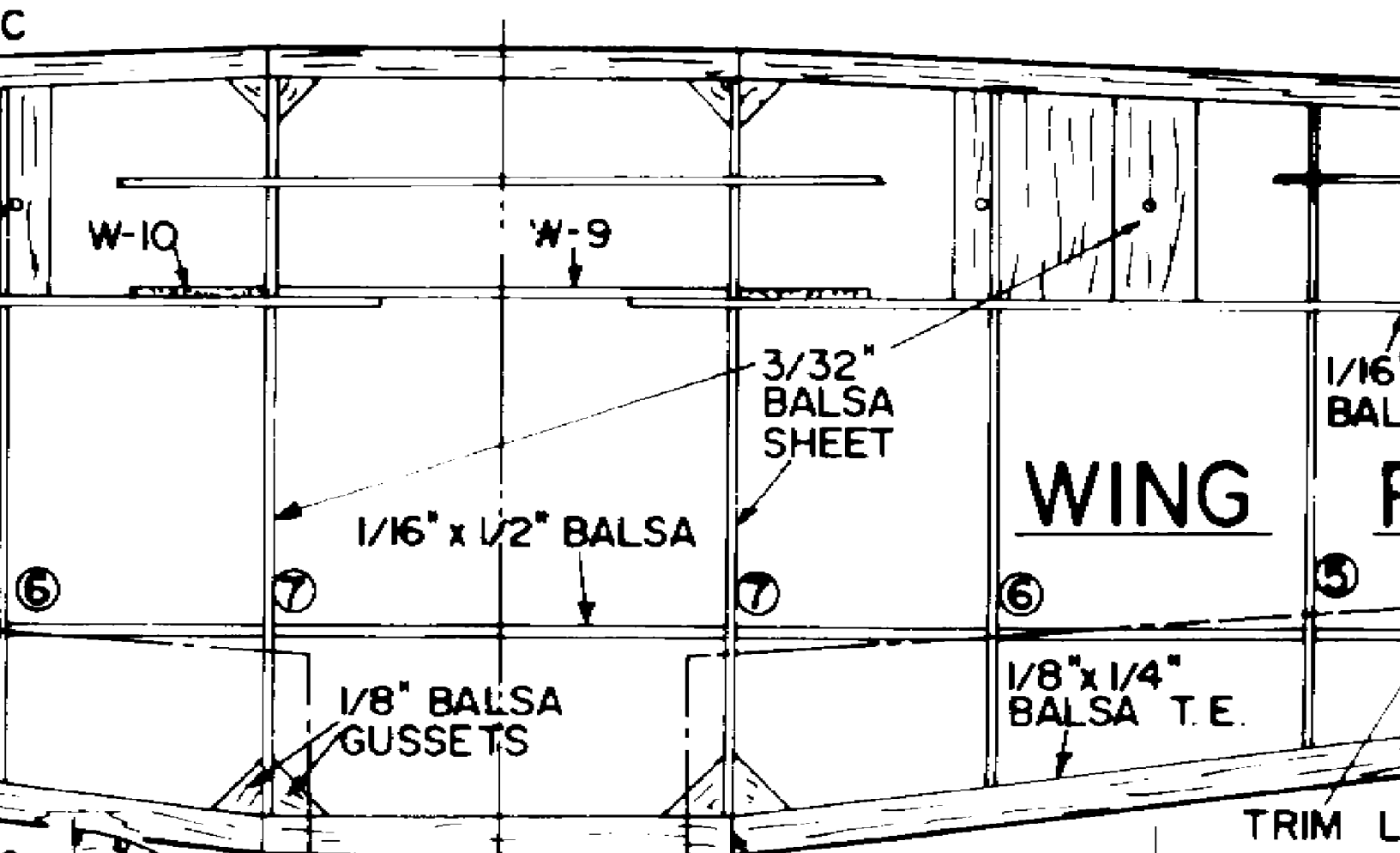
N C-C

1/16" BALSA
FILL

Ⓒ

Ⓓ

SHI



BLACK - TOP AND B

1/16" x 1/8"
BAL. SPARS

PLAN

5

4

3

2

1

FRIM LINE
BOTTOM ONLY

HOLLOW
BLOCK

CANOPY

4 LAMIN
1/32" x 1/8"

1/16"

ALL
STRINGERS
1/16" SQ.
BALSA

H

G

F

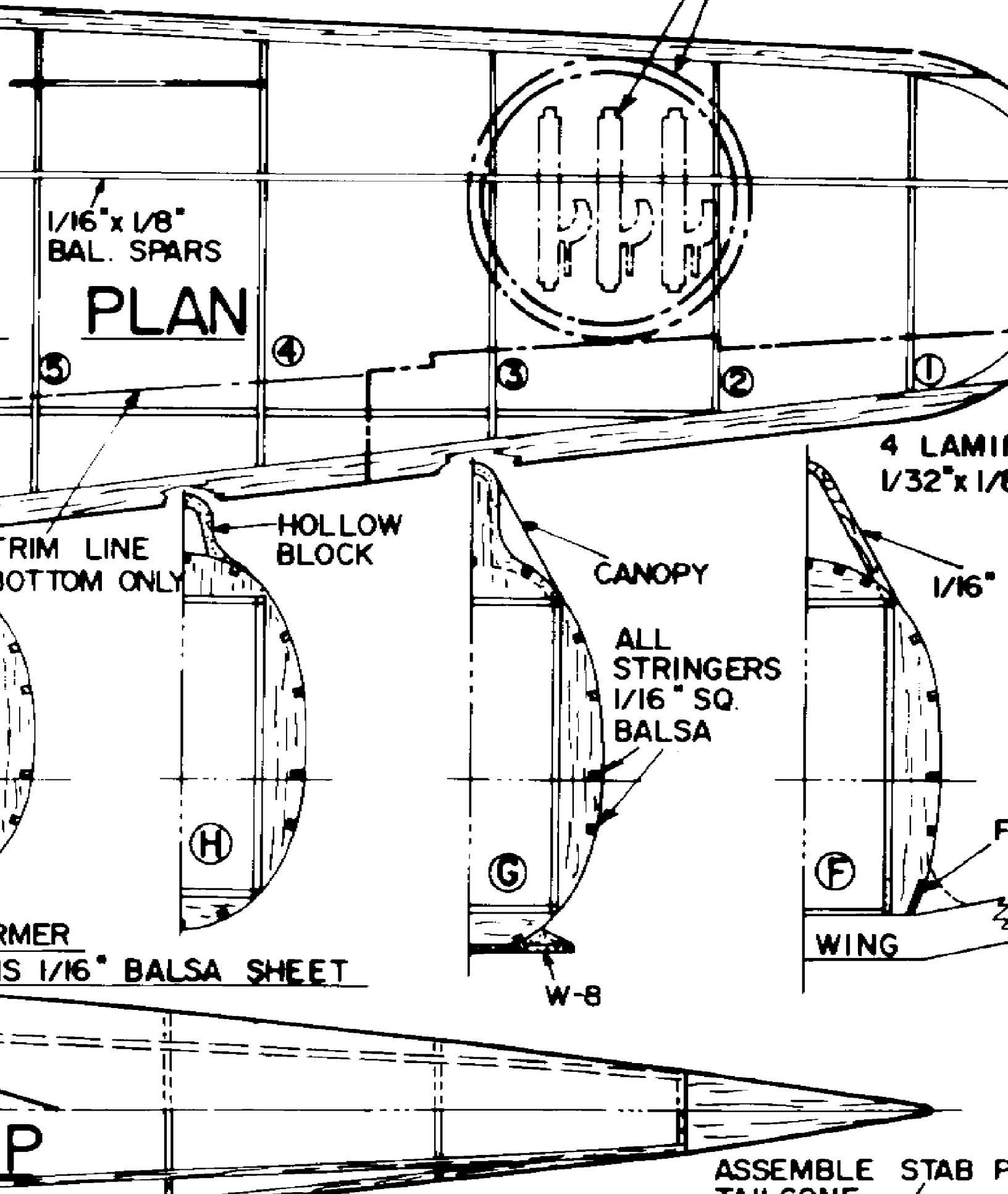
FRMER
S 1/16" BALSA SHEET

WING

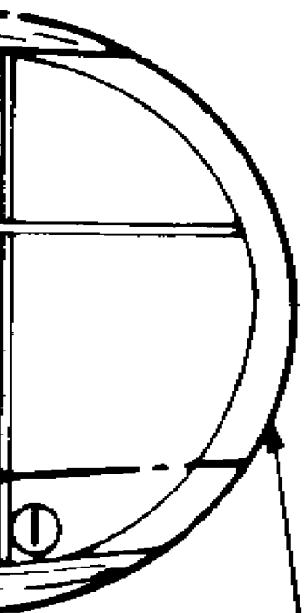
W-8

P

ASSEMBLE STAB P
TAIL CONE



AND BOTTOM



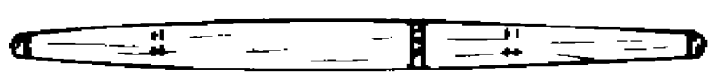
LAMINATIONS OF
32° x 1/8° Balsa

1/16° PLY

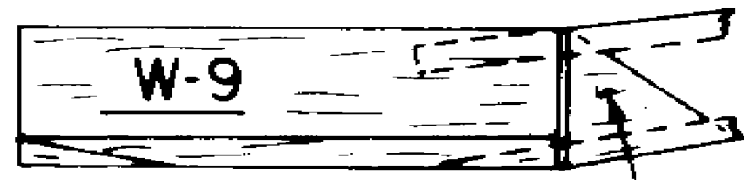


F-1

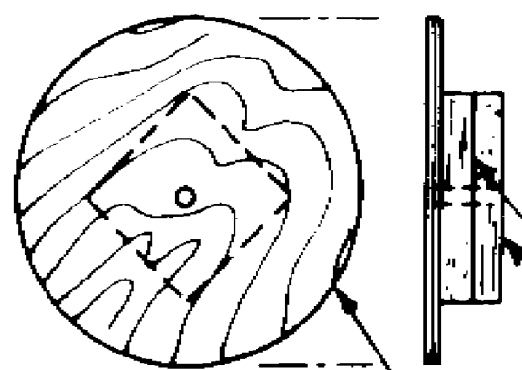
STAB PRIOR TO



SECT. A-A



W-10



NOSE BLOCK

1/16" F

1/16" Balsa S BETWEEN (B)

- DIHEDRAL..... 2" EACH TIP
- PROP..... 10" DIA.
- MOTOR..... 3-4 LOOPS 1/8"x24"
- NOTES:

- USE LIGHTET Balsa FOR ALL BLOCKS AND FILLETS
- FLIGHT TRIM W/OUT L.G. REQUIRES MORE DOWN THRUST & FWD. C. G.
- WASHOUT EA. WING PANEL 1/8" - 1/4"
- LEFT WING PANEL IS 1/2" LONGER THAN RIGHT PANEL

FILLET SEQUENCE - ASSEMBLE F-1 TO FRAME - COVER FUSELAGE - SHAPE & ASSEMBLE FUSELAGE FILLETS - FIT WING TO FUSELAGE

REFERENCE

SQUADRON SIGNAL NO. 41
AIRPOWER JAN., 1976



F-1

1/16" BALS

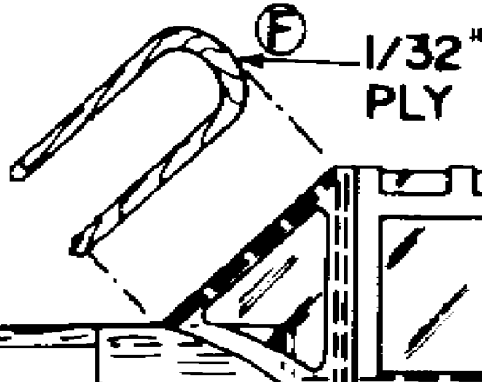


SA SHEET

FUSE. TOP

FROM Balsa

.005 ACETATE SHEET WINDSHIELD & CANOPY



HOLLOW Balsa

WHITE

3/32" SQ. Balsa FRAME

FUSE. SIDE

1/16" Balsa STRINGERS

3/32" SHEET

1/16" x 1/8" Balsa

OLDER

1/16" M.W.

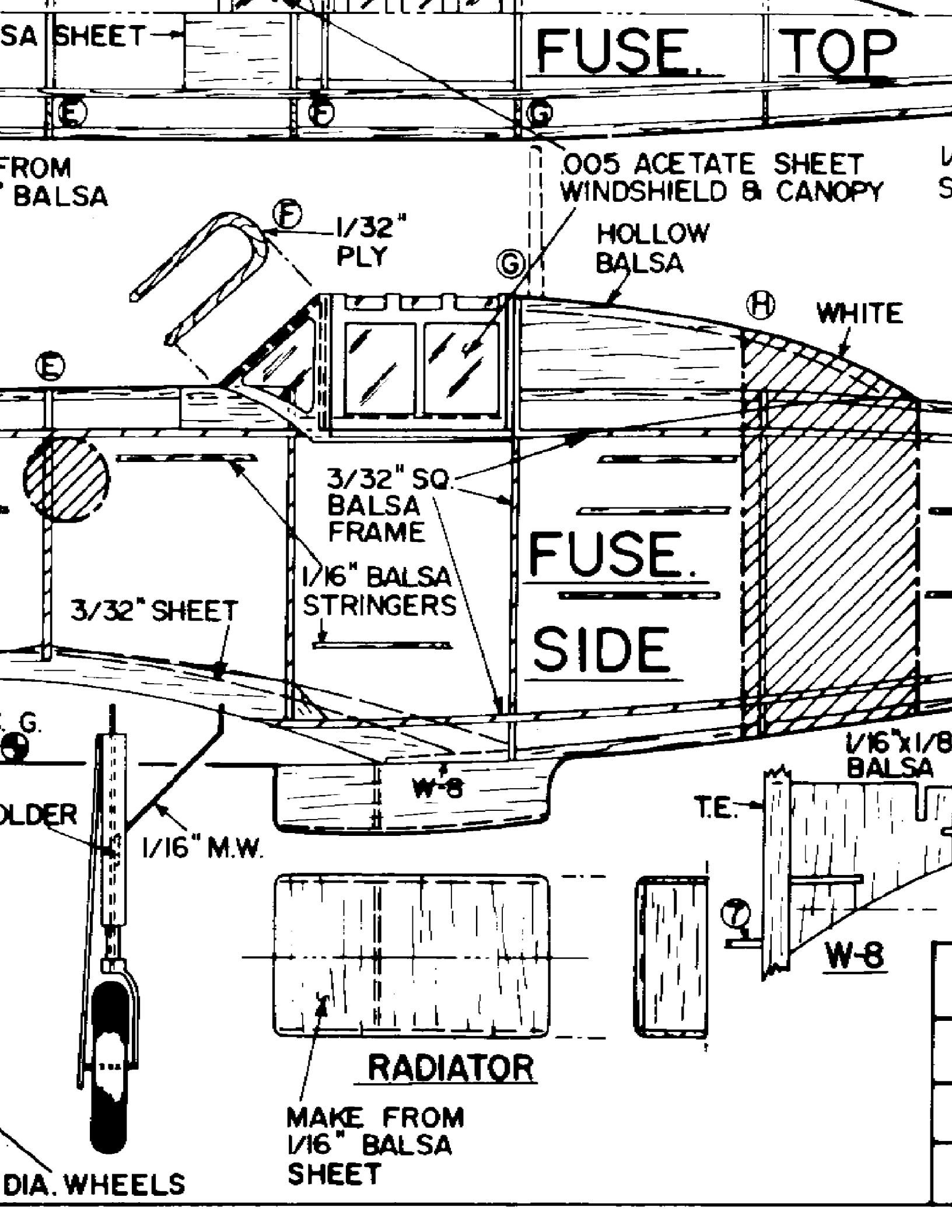
T.E.

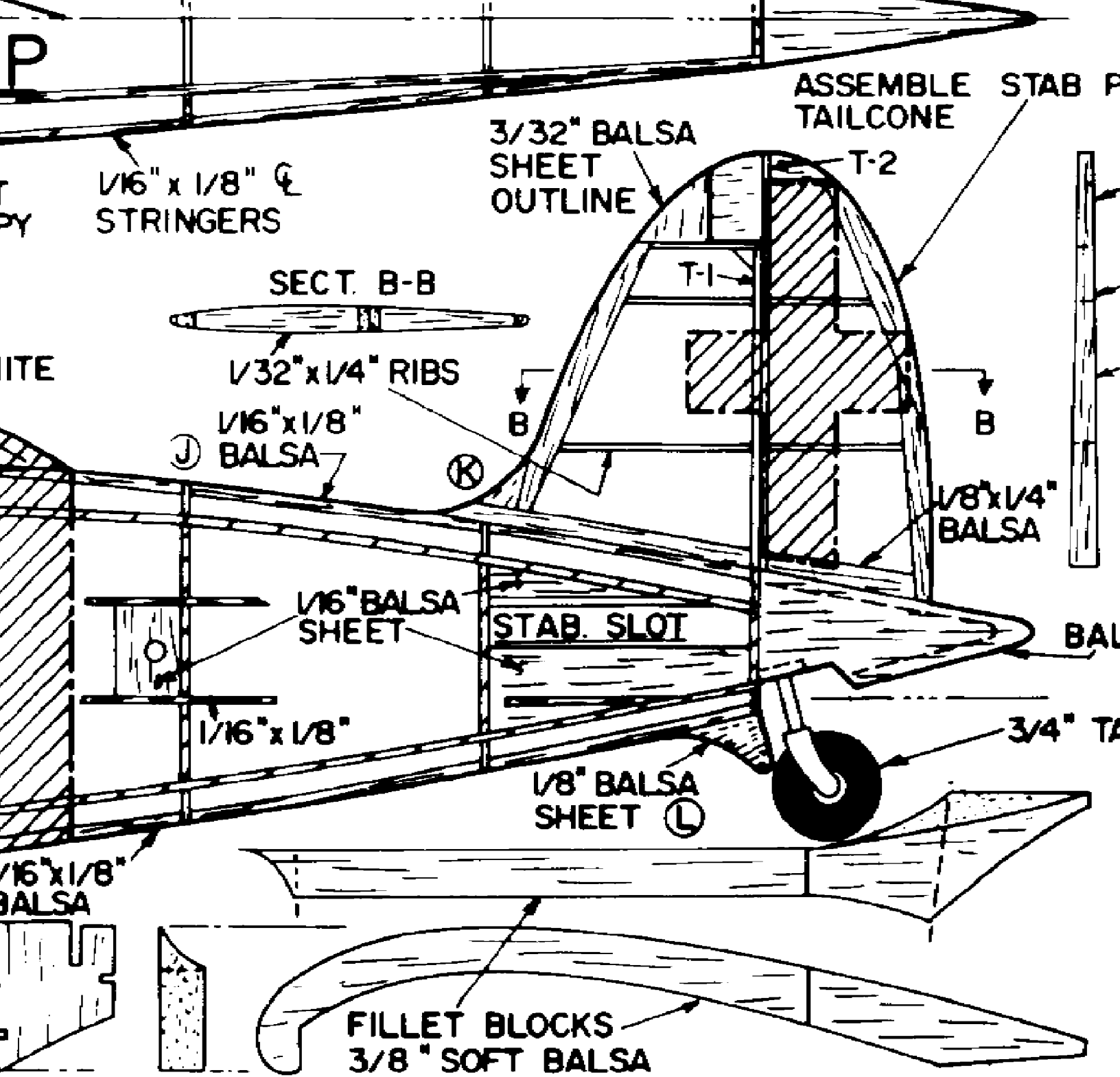
W-8

RADIATOR

MAKE FROM 1/16" Balsa SHEET

DIA. WHEELS





8

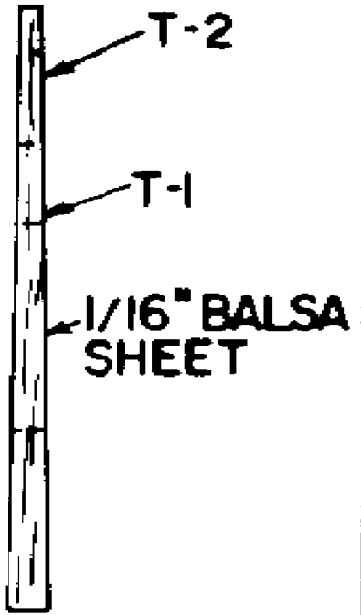
MACCHI 202 FOLGOR

13/16" = 12" SCALE WWII ITALIAN FIGHT

DESIGNED & DRAWN BY MIKE MIDKIFF

TRACING BY JOE DEMARCO

STAB PRIOR TO



Balsa Block

3/4" Tailwheel



ORE

FIGHTER

MDKIFF