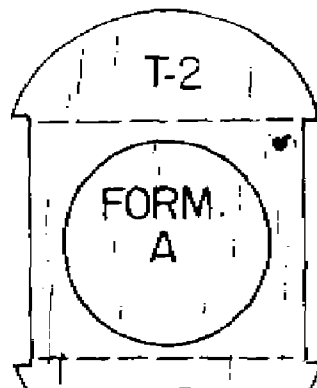
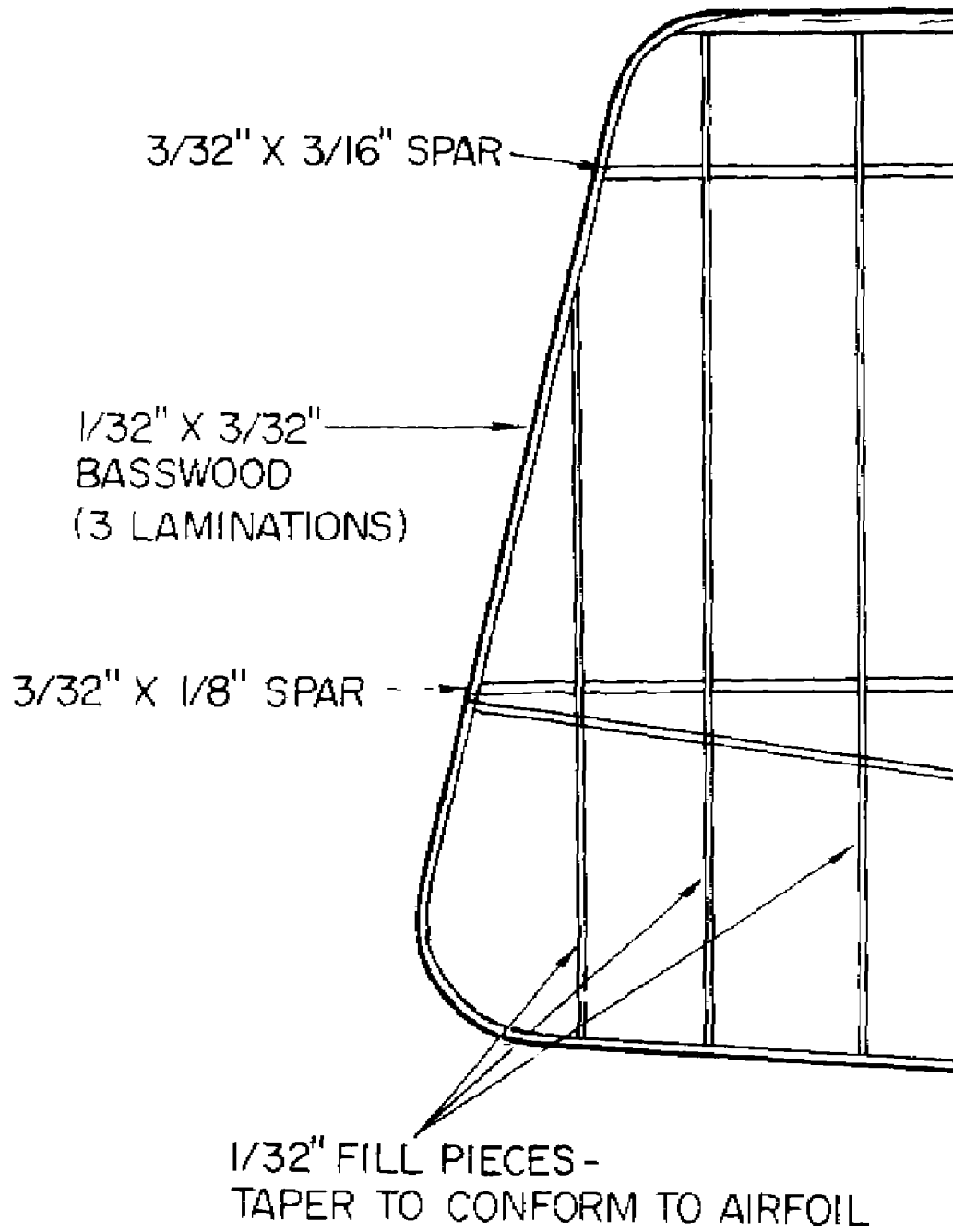
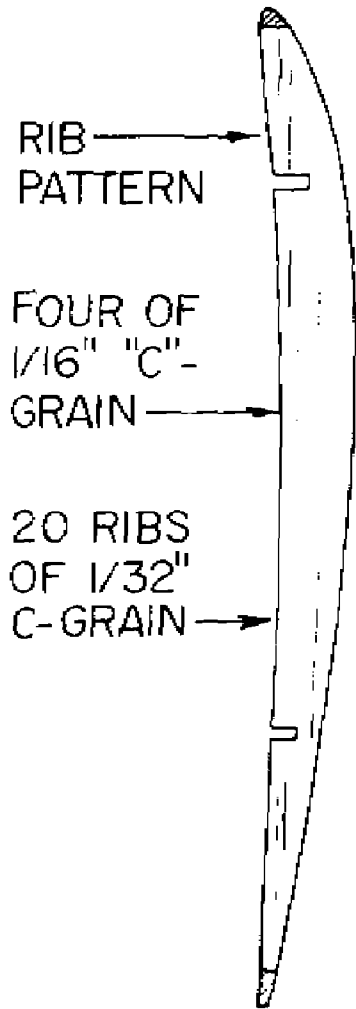
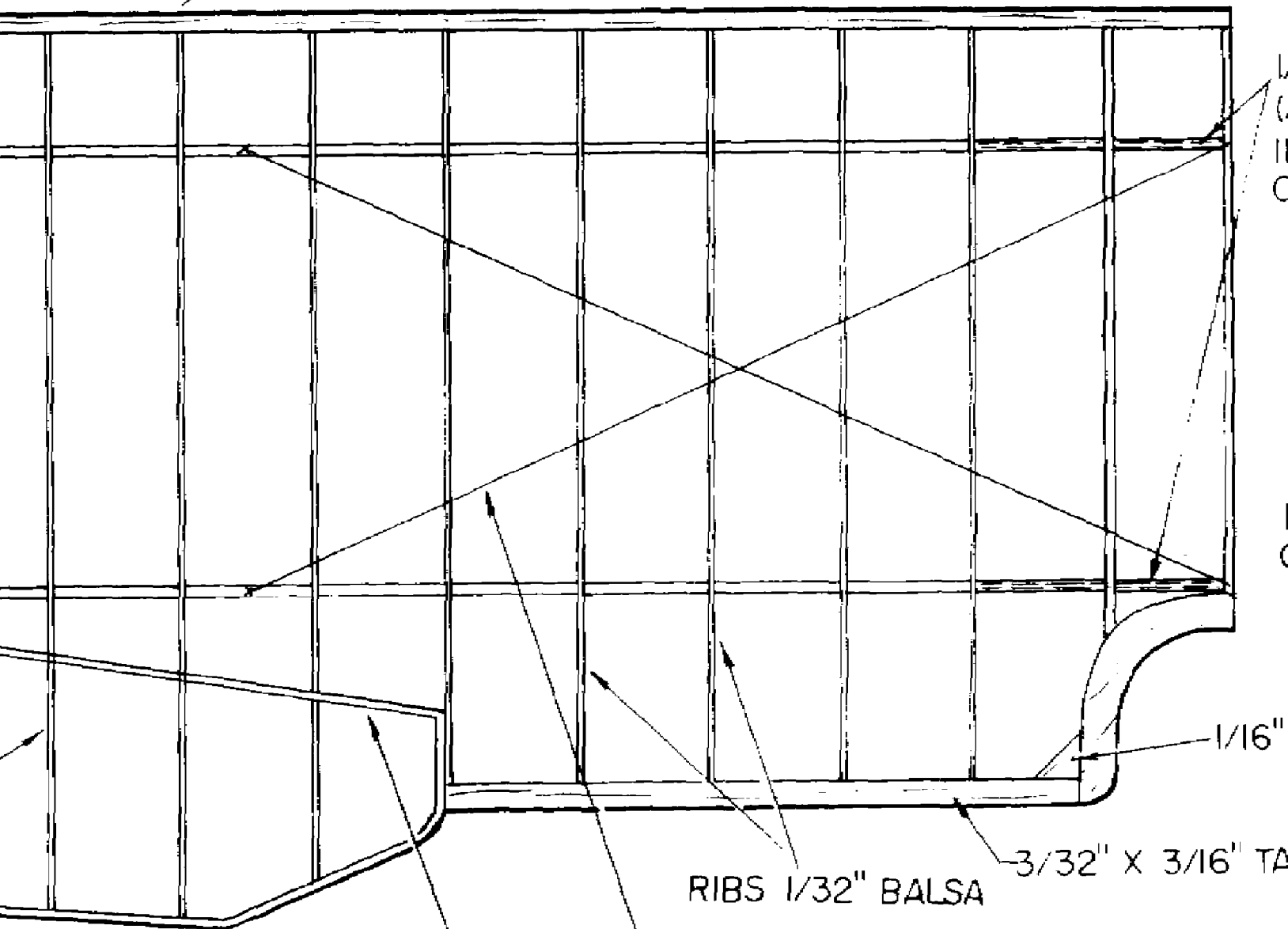


LEFT WING LAYOUT



1/8" SQ. LEADING EDGE



RIBS 1/32" Balsa

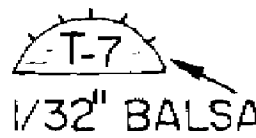
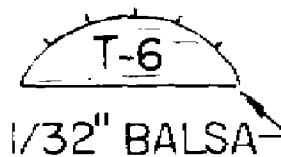
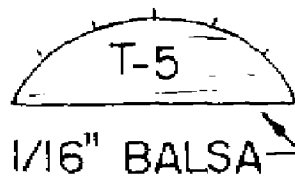
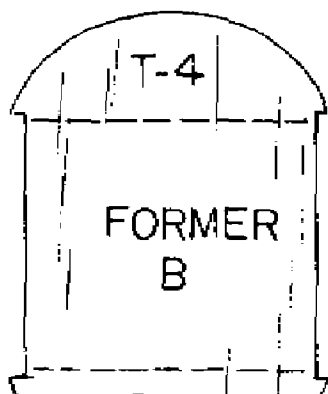
3/32" X 3/16" TA

RIGGING LINES (BOTTOM VIEW)

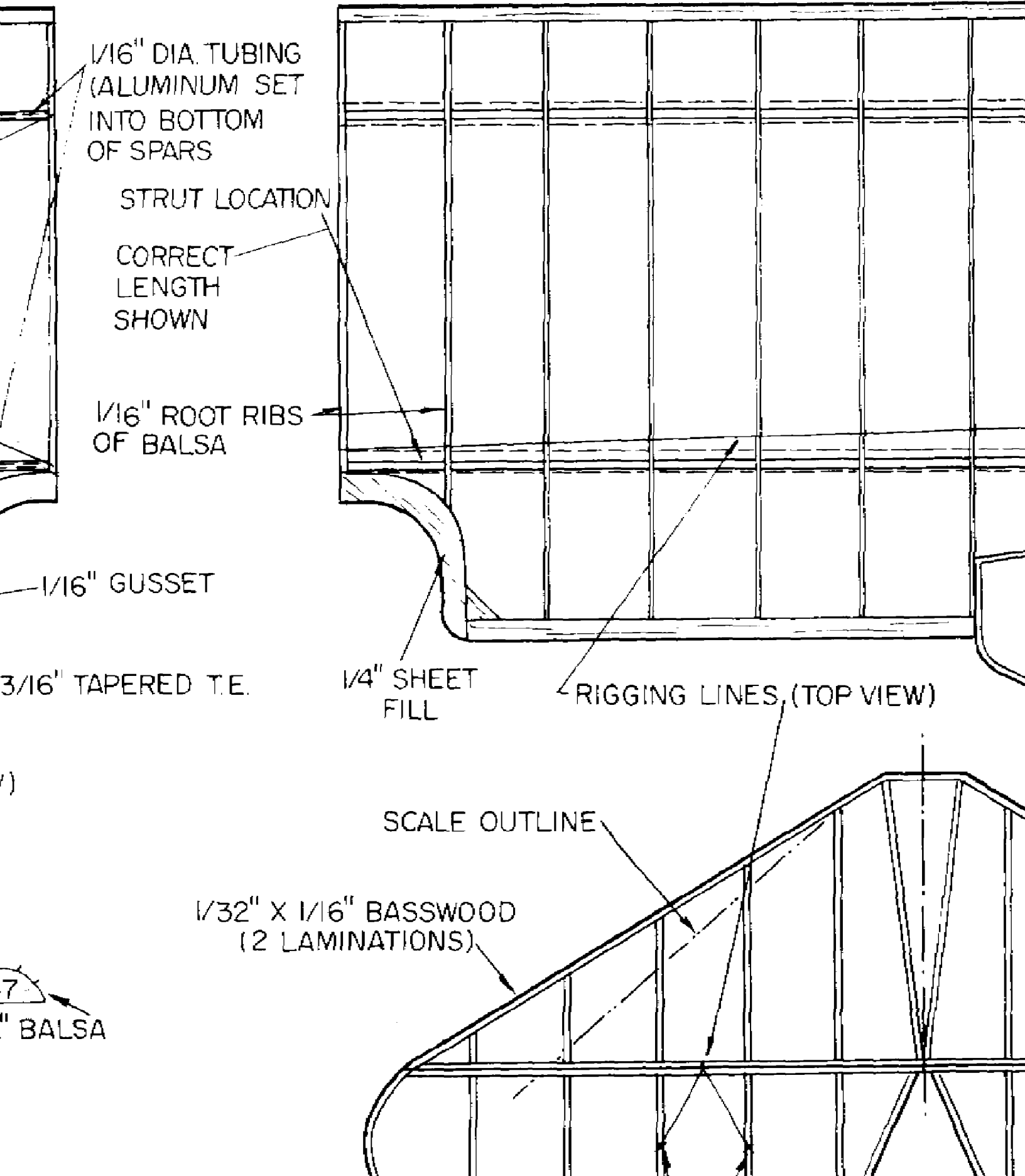
1/16" X 1/4" SUB SPAR
MEDIUM Balsa

OIL

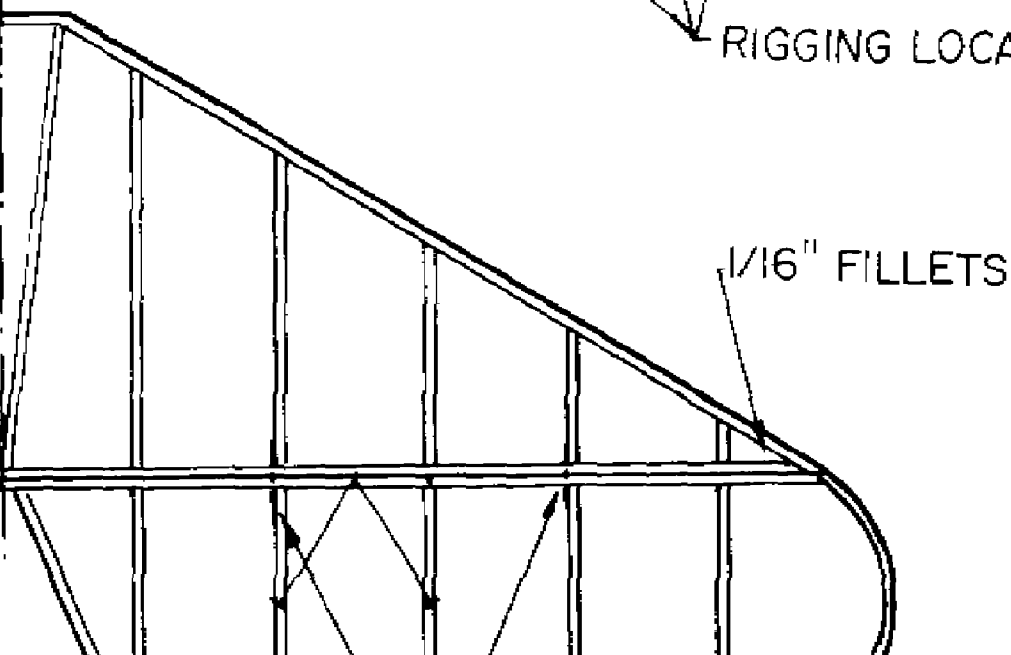
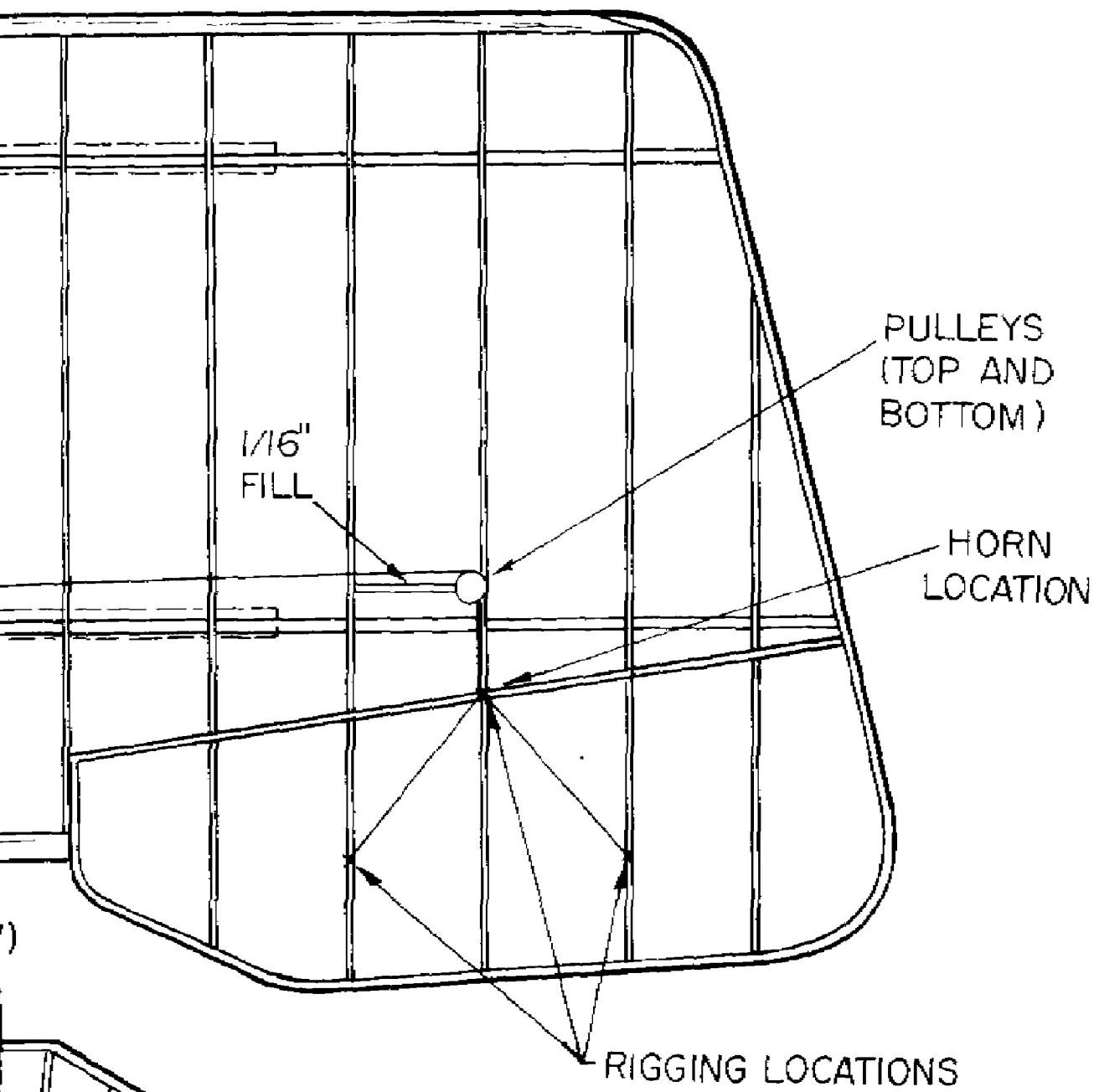
SA

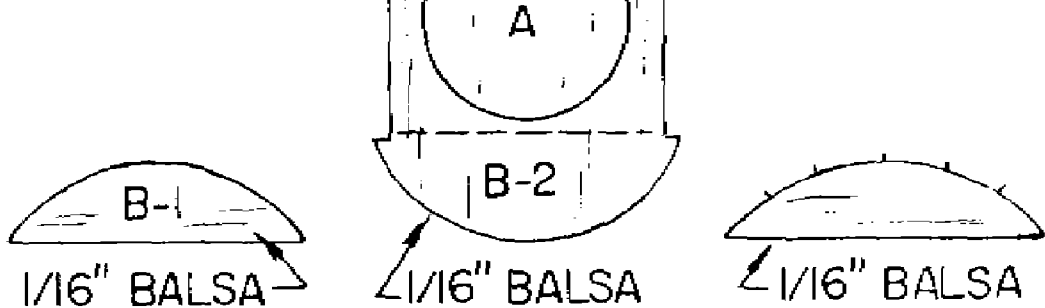


RIGHT WING LAYOUT

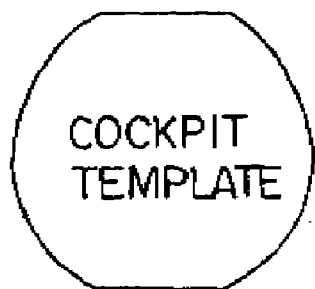


OUT

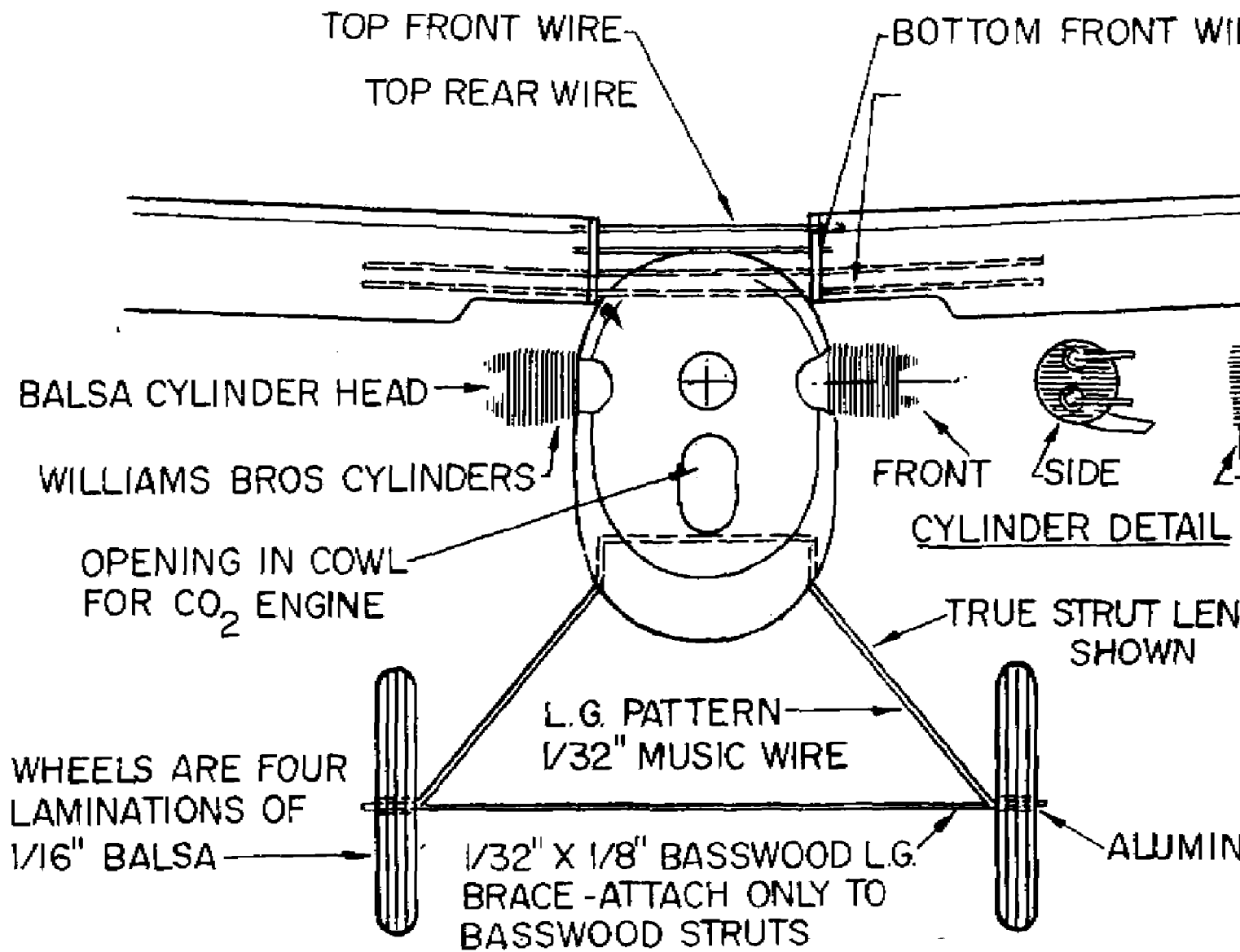




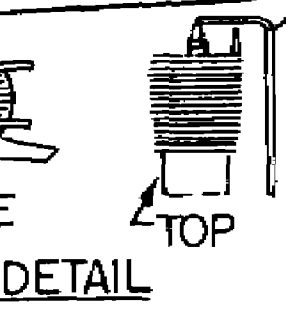
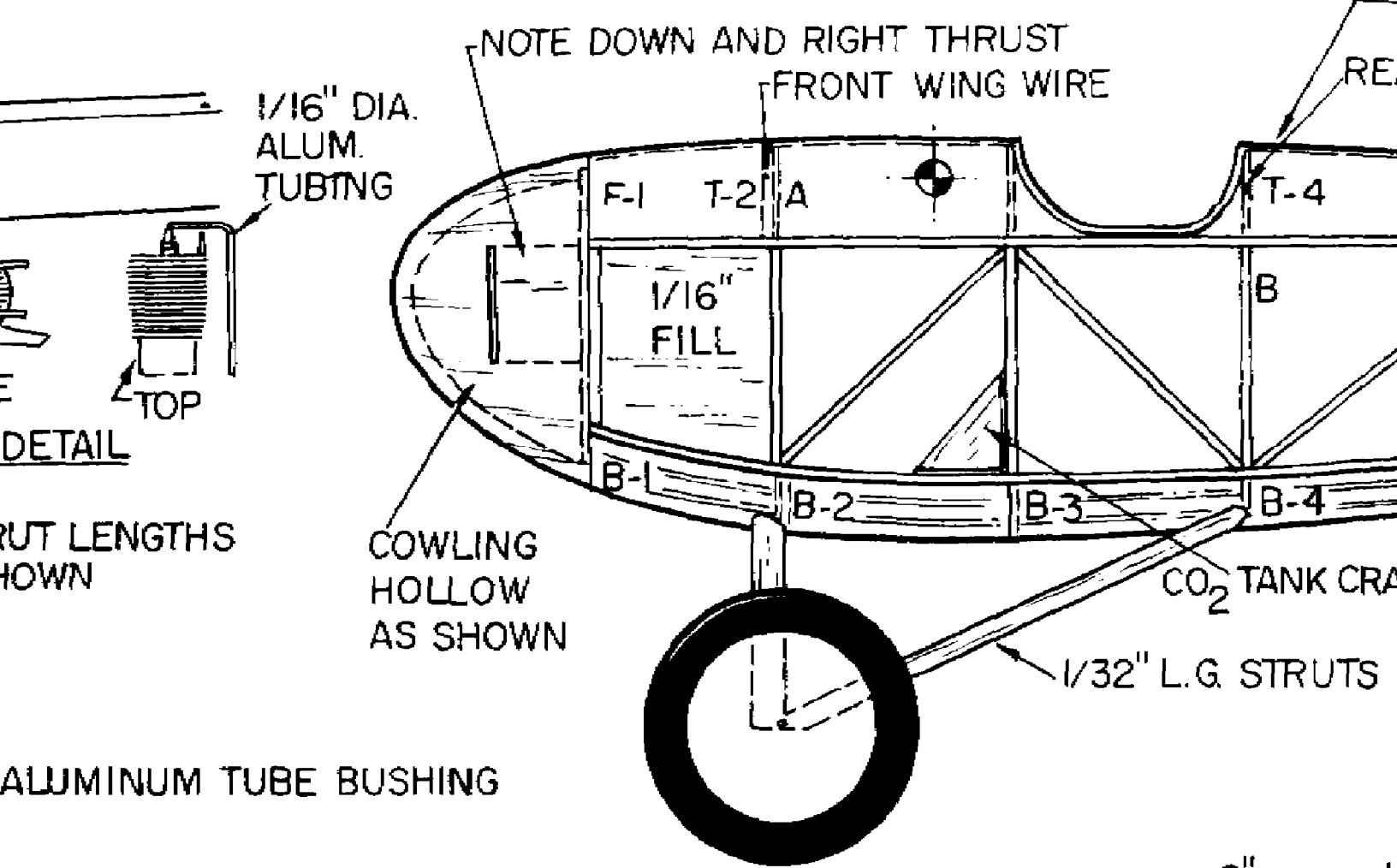
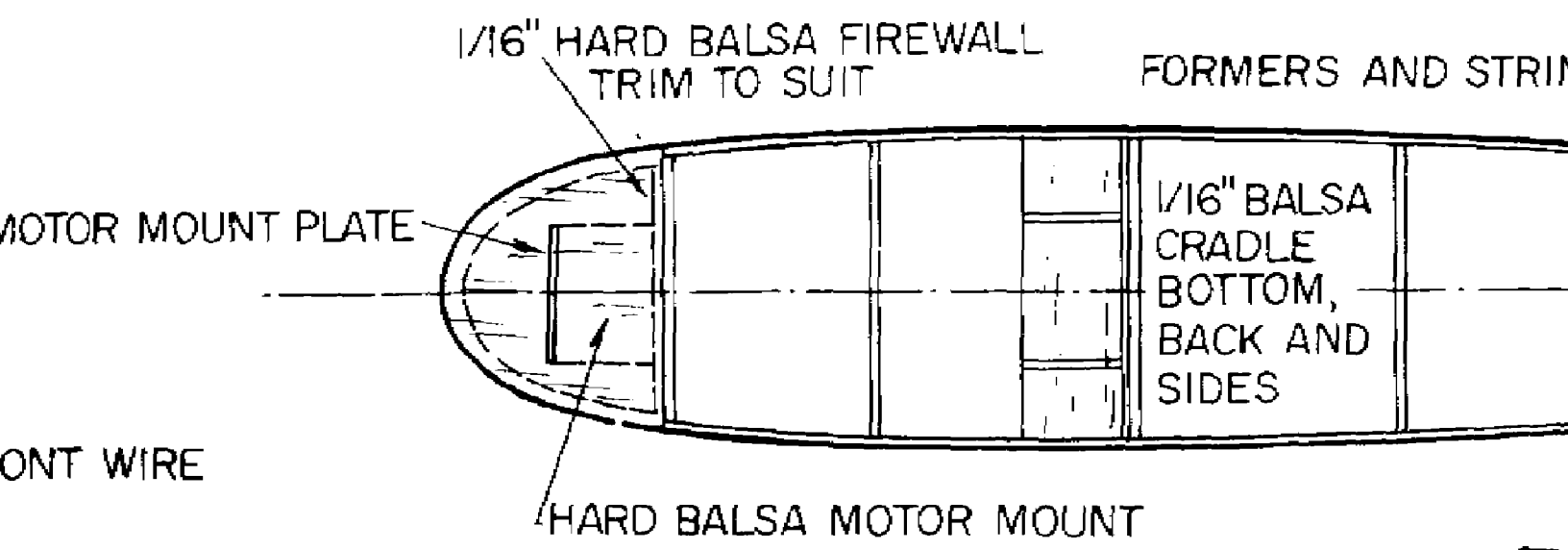
FORMERS



1/32" PLY MOTOR M



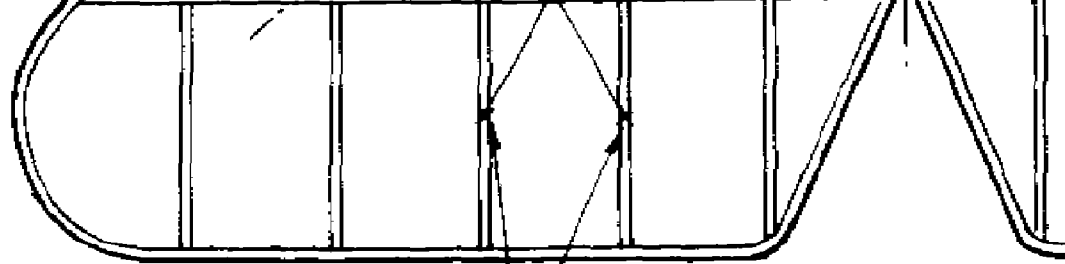
FUSELAGE FRONT VIEW



STRUT LENGTHS SHOWN



1-7
3/32" Balsa



STABILIZER

AND STRINGERS OMITTED FOR CLARITY

RIGGING LOCATIONS

← 1/16" SQ.
BALSA

TOP VIEW

1/32" X 1/16" BASSWOOD
LAMINATED OUTLINE

1/32" SHEET
REAR WING WIRE

THREAD RIGGING

T-4

T-5

T-6

T-7

B

1/16" SQ. Balsa

B-4

RIGGING LOCATIONS FROM ELEVATOR

WING CRADLE

1/16" SQ. BASSWOOD LONGERONS

STRUTS

FUSELAGE SIDE VIEW

1"

2"

3"

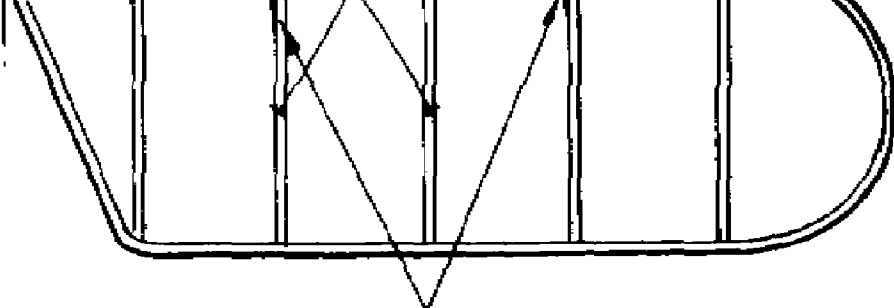
4"

5"

6"

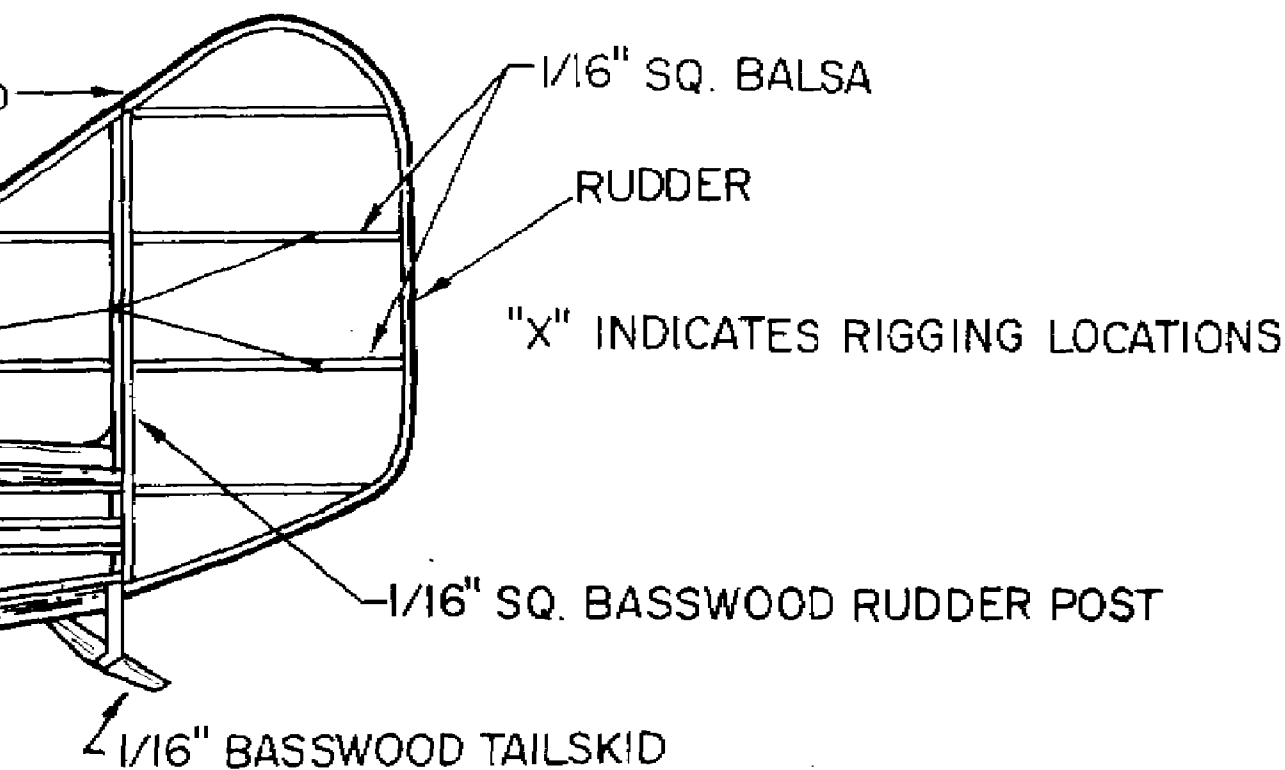
7"

8"



SOFT COPPER WIRE HINGE LOCATIONS

ER



1919 L.W.F. "BUTTERFLY"

A.M.A. SCALE FOR CO₂ ENGINES

DESIGNED AND DRAWN BY LARRY KRUSE

INKED BY D.J.M

