

CARBON

1/16" WIDE CARBON FIBER STRIP IS ATTACHED TO BOTTOM EDGE OF SPAR FROM FUSELAGE ϕ TO DIHEDRAL BREAK

SHORT WING SPAR

LONG WING SPAR

TURBULATOR

TURBULATOR

MAIN SPAR

LONG WING PLAN VIEW

FUSE. SIDE

FUSELAGE

NACELLE

FOAM FAIRING CARVED TO SHAPE - ATTACH TO STAB.

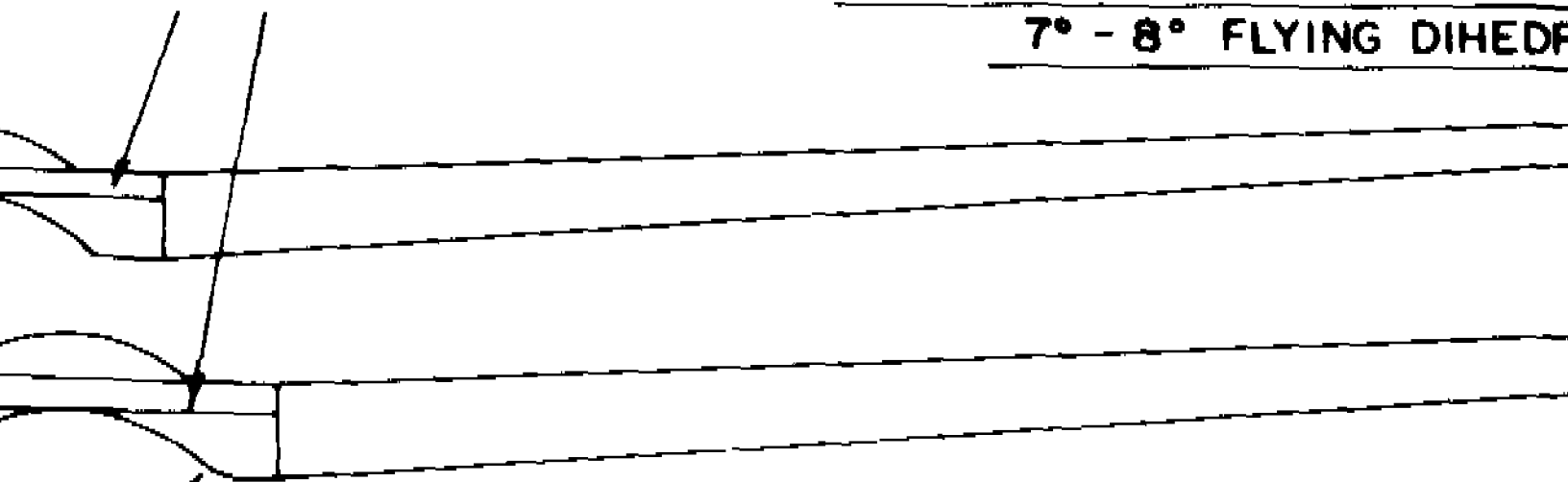
1/8" SHEET



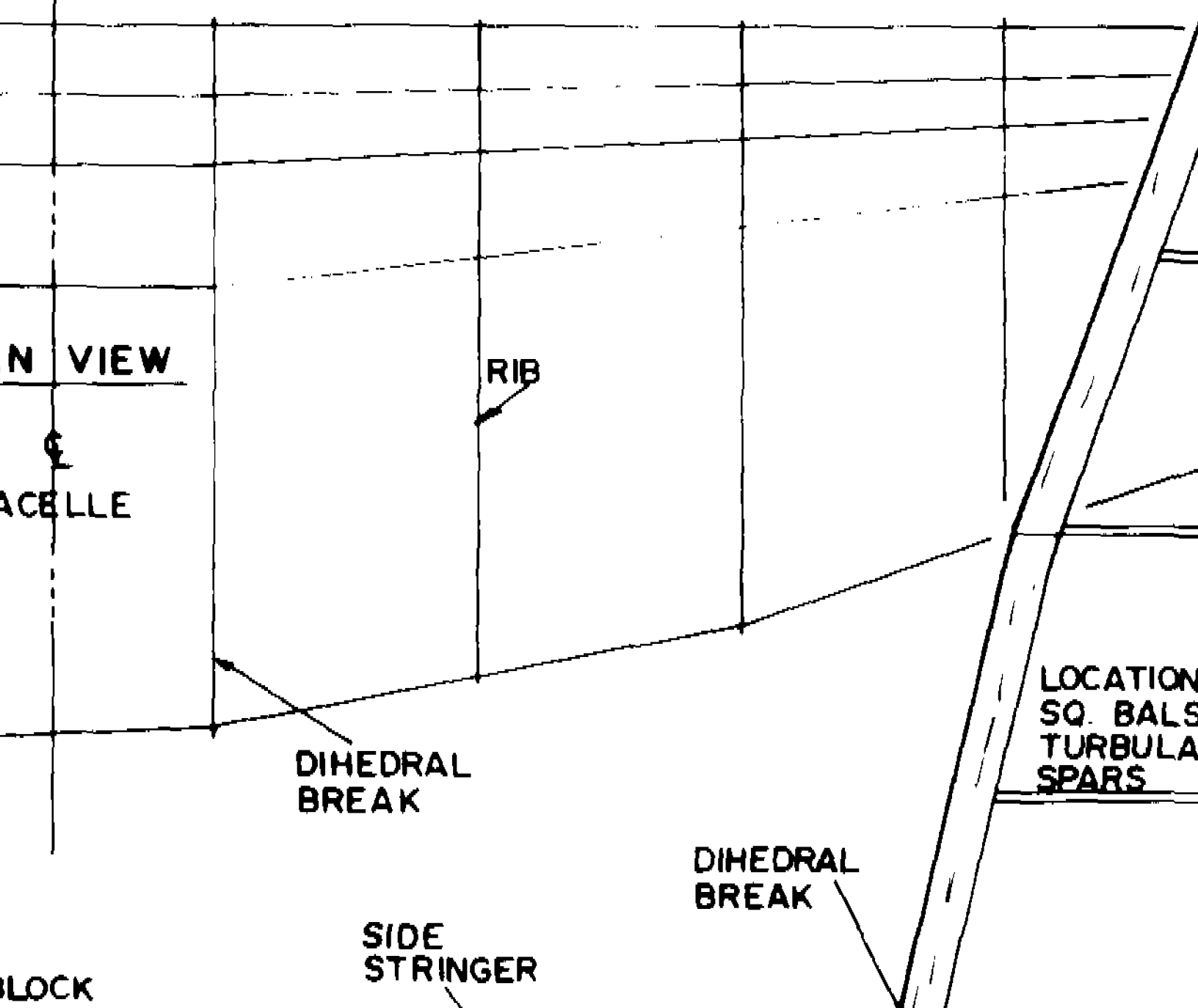
SOFT BALSAM BLOCK

CARBON FIBER

NOTE: 5° IS SCALE DIHEDRAL
7° - 8° FLYING DIHEDRAL



NOTE - ROUNDED EDGES



N VIEW

ACELLE

RIB

DIHEDRAL
BREAK

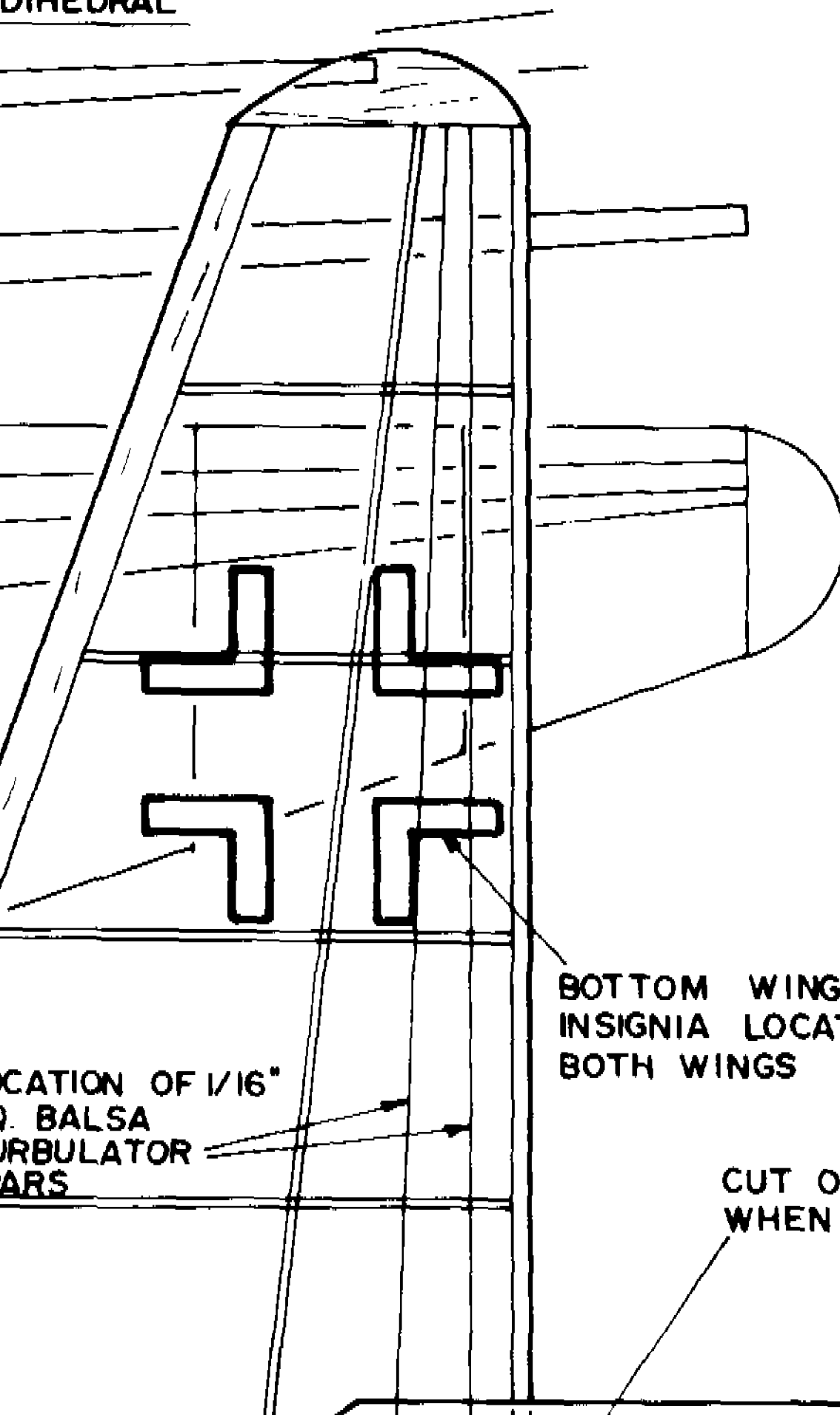
DIHEDRAL
BREAK

SIDE
STRINGER

BLOCK

LOCATION
SQ. BALS
TURBULA
SPARS

DIHEDRAL
DIHEDRAL



HEINKLE He-219

WING SPAN 30"

He-219 B-2 LON

B-3 LON

WING SPAN 35-1/2"

PLANS DEVELOPE

NEWS, VOL. 3, 19

COLOR SCHEME (

ACRYLIC COLORS

BASE - (A 36)

MOTTLES - (A

INSIGNIA - FL

CODES - VARI

SOURCES OF PHO

AIR ENTHUSIA

WAR PLANES

UHU He 219,

ARSENAL PU

WINGS, VOL

LOCATION OF 1/16"
D. Balsa
TURBULATOR
BARS

BOTTOM WING
INSIGNIA LOCATION,
BOTH WINGS

CUT OUT LEADING EDGE
WHEN NACELLE IS ATTACH

BALS

He-219 A-5 UHU

30" WING AREA 116.8 SQ. IN.

2 LONG WING, SHORT NACELLE W/TURBO

3 LONG WING, LONG NACELLE W/TURBO

35-1/4" WING AREA 127.8 SQ. IN.

DEVELOPED FROM 3-VIEWS BY AVIATION

3 , ISSUE 6

PAINT (AIRBRUSHED) WITH PACTRA
COLORS :

(A 36) DARK FLYER GRAY

(A 41) FLAT MILITARY BLUE

FLAT BLACK

- VARIED COLORS

PHOTOS, 3-VIEWS, ETC.

ENTHUSIAST, 40, SEP-DEC 1989

PLANES OF THE THIRD REICH, GREEN

He 219, HEINZ NOWARRA, WAFFEN

AL PUBLICATION

, VOL 9, NO 4, AUGUST 1979

EDGE AND ALL TURBULATOR SPARS
ATTACHED

BALSA BLOCK FLAME DAMPENERS

1/8" SHEET KEY



SOFT BALSA BLOCK STABILIZER KEYS

CENTER STAB. RIB DETAIL

1/16" SQ. BALSA SPAR, TOP & BOT.

HORIZONTAL STABILIZER

VERTICAL STABILIZER IS 90° TO HORIZ. STAB.
HORIZONTAL STAB. DIHEDRAL IS 15° - BLOCK UP ONE PANEL 2-5/8"

STABILIZER KEYS

3/32" BALSA CROSS PIECE

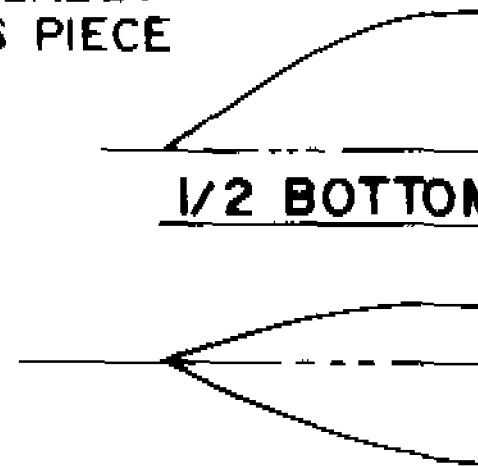
1/16" x 1/4" BALSA T.E.

1/2 BOTTOM

1/16" SQ. BALSA RIBS

SIDE VIEW

1/16" SQ. BALSA FIN ATTACH LIP



LOCK
EYS

ZER
STAB.
DIHEDRAL
ONE

SIDE
STRINGER

BREAK

NOTE
ANGLE

SOFT
BALSA
BLOCK

1/8" x 1/4"
BALSA T. E.

3/32" SQ. BALSA
CROSS PIECE

1/32" PLY
PATCH

CEN
RIB

NO TOP OR BOT.
FORMER HERE

SUPERCHARGER INTAKE-CARVE
FROM BALSA ON B-2 & B-3
LONG NACELLE

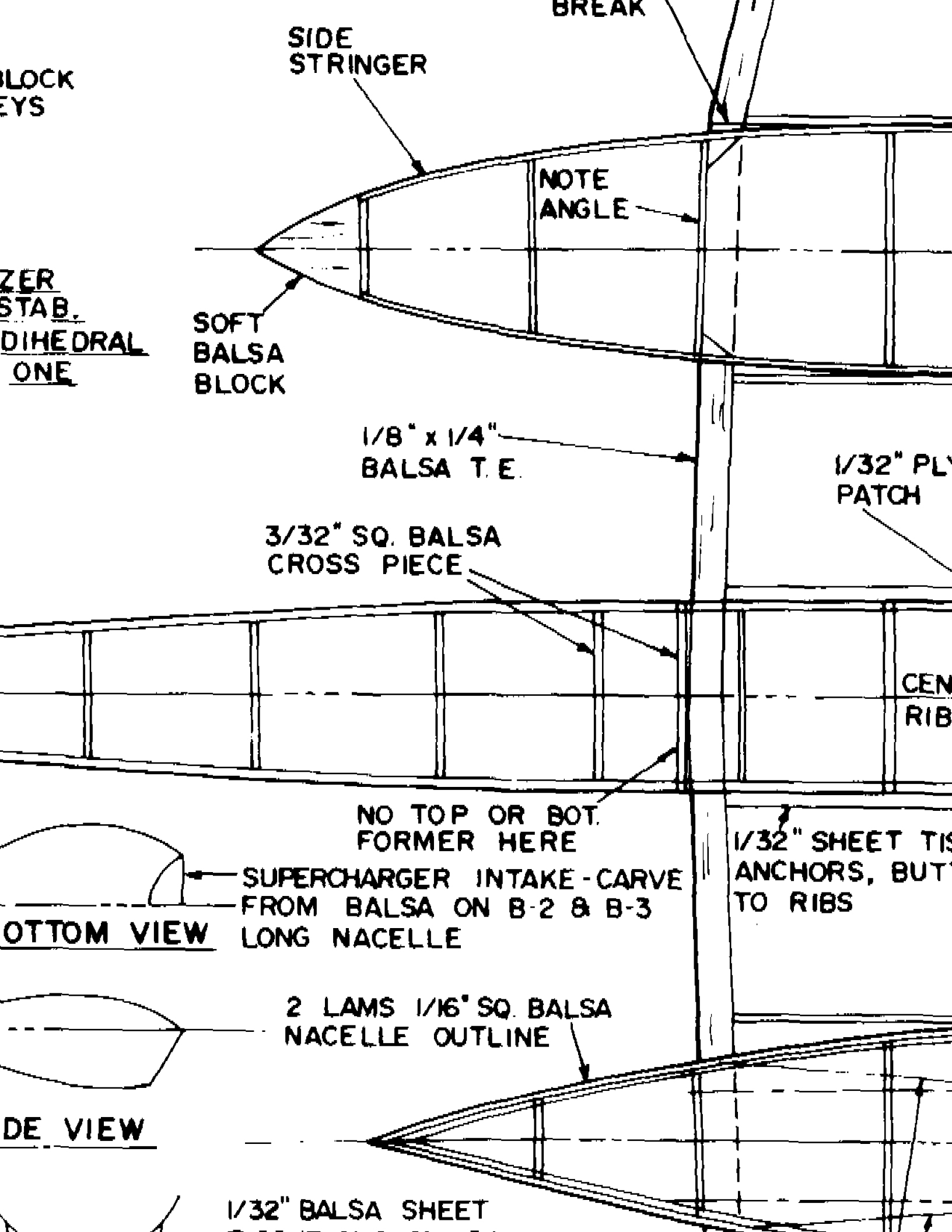
1/32" SHEET TIS
ANCHORS, BUT
TO RIBS

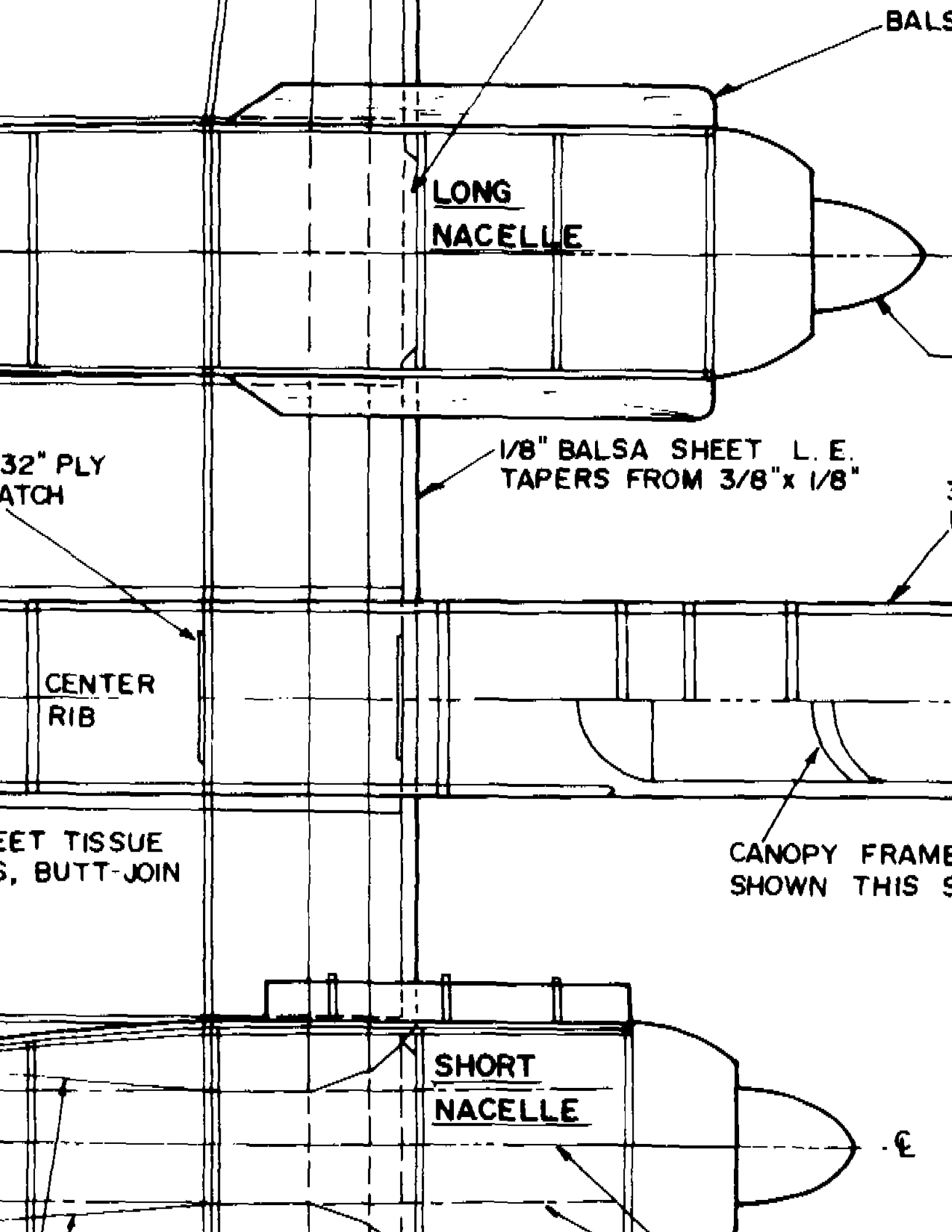
OTTOM VIEW

2 LAMS 1/16" SQ. BALSA
NACELLE OUTLINE

DE VIEW

1/32" BALSA SHEET





BALS

LONG
NACELLE

32" PLY
PATCH

1/8" Balsa Sheet L. E.
TAPERS FROM 3/8" x 1/8"

CENTER
RIB

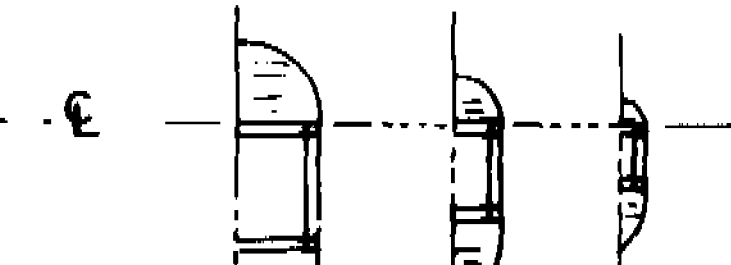
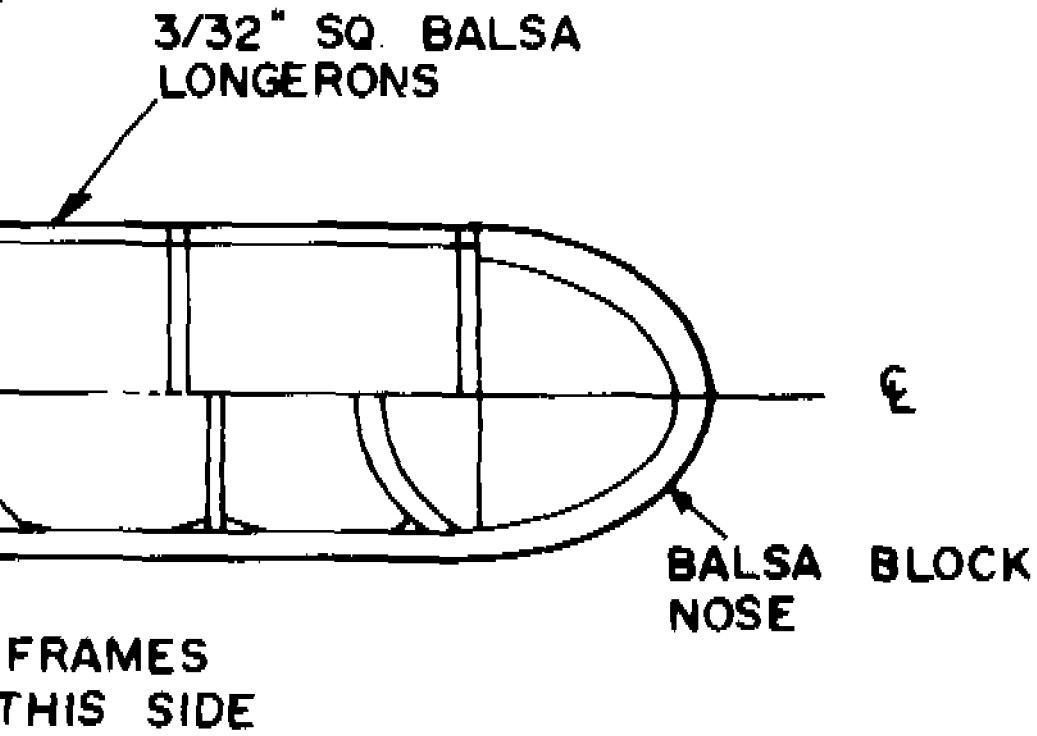
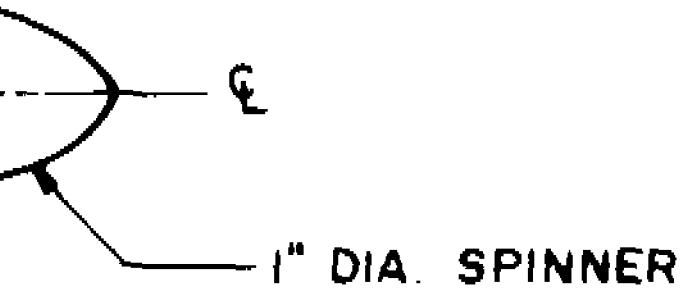
EET TISSUE
S, BUTT-JOIN

CANOPY FRAME
SHOWN THIS S

SHORT
NACELLE

E

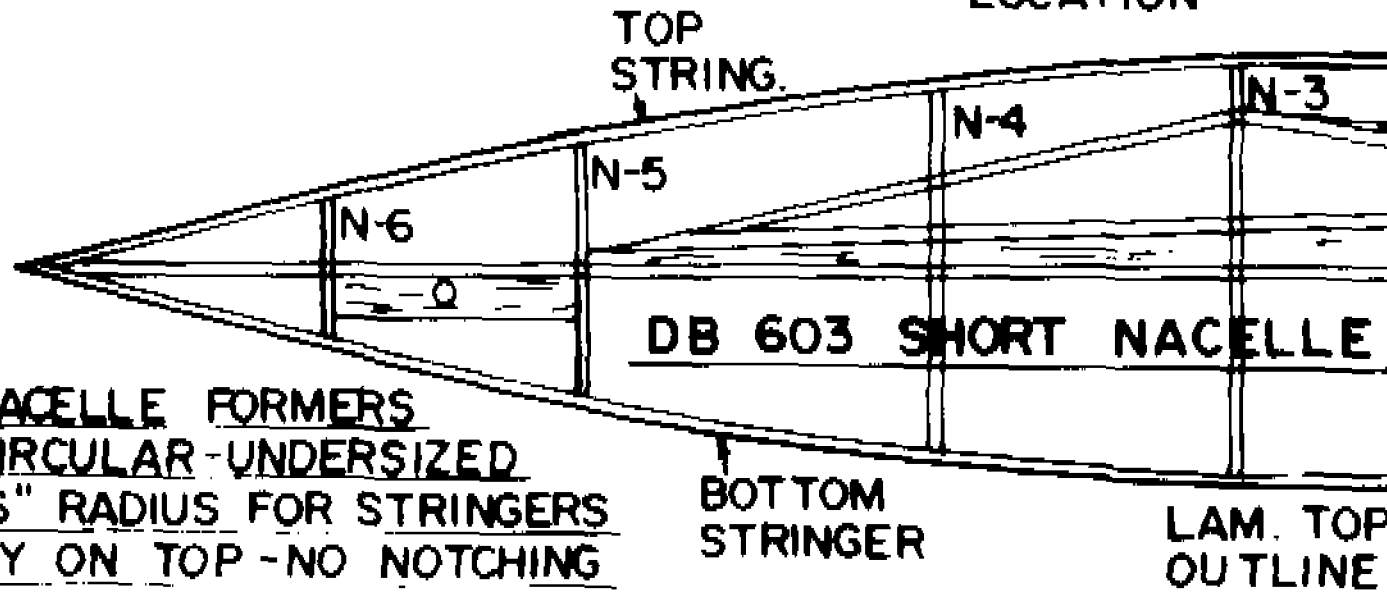
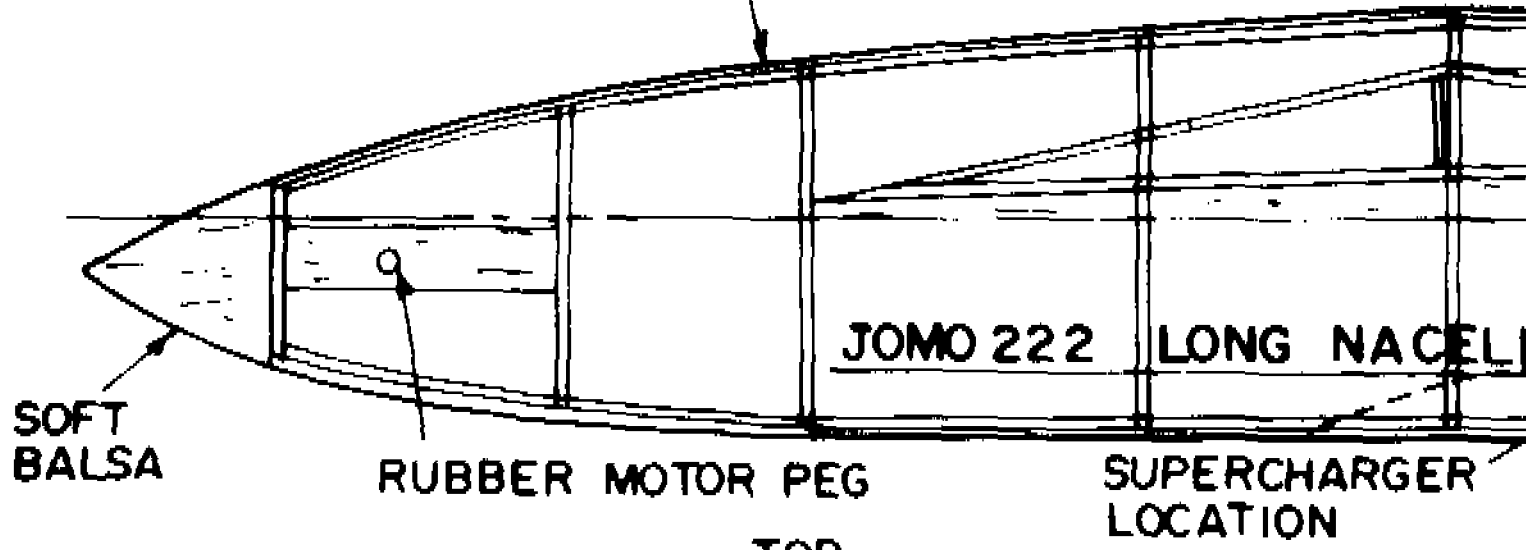
BALSA BLOCK FLAME DAMPENERS



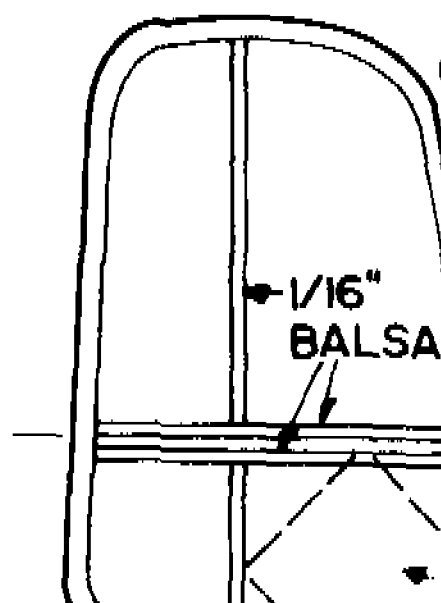
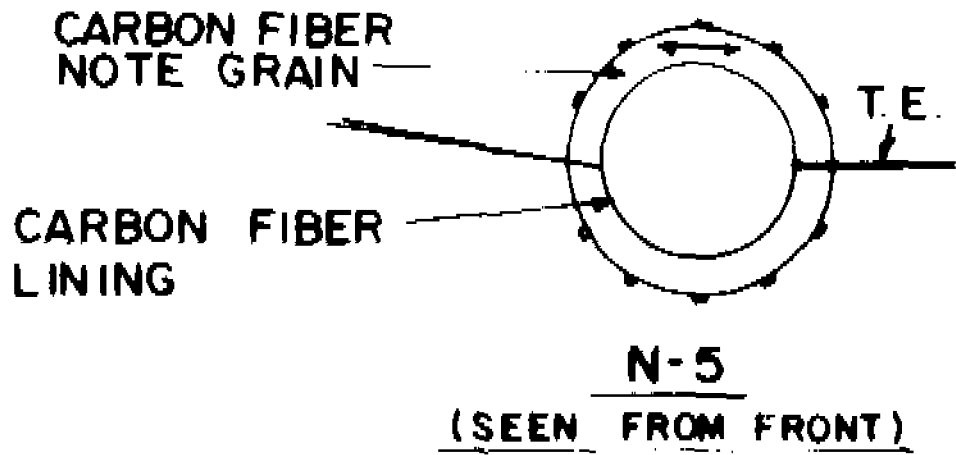
1/16" SQ. BALSA
FIN ATTACH LIP

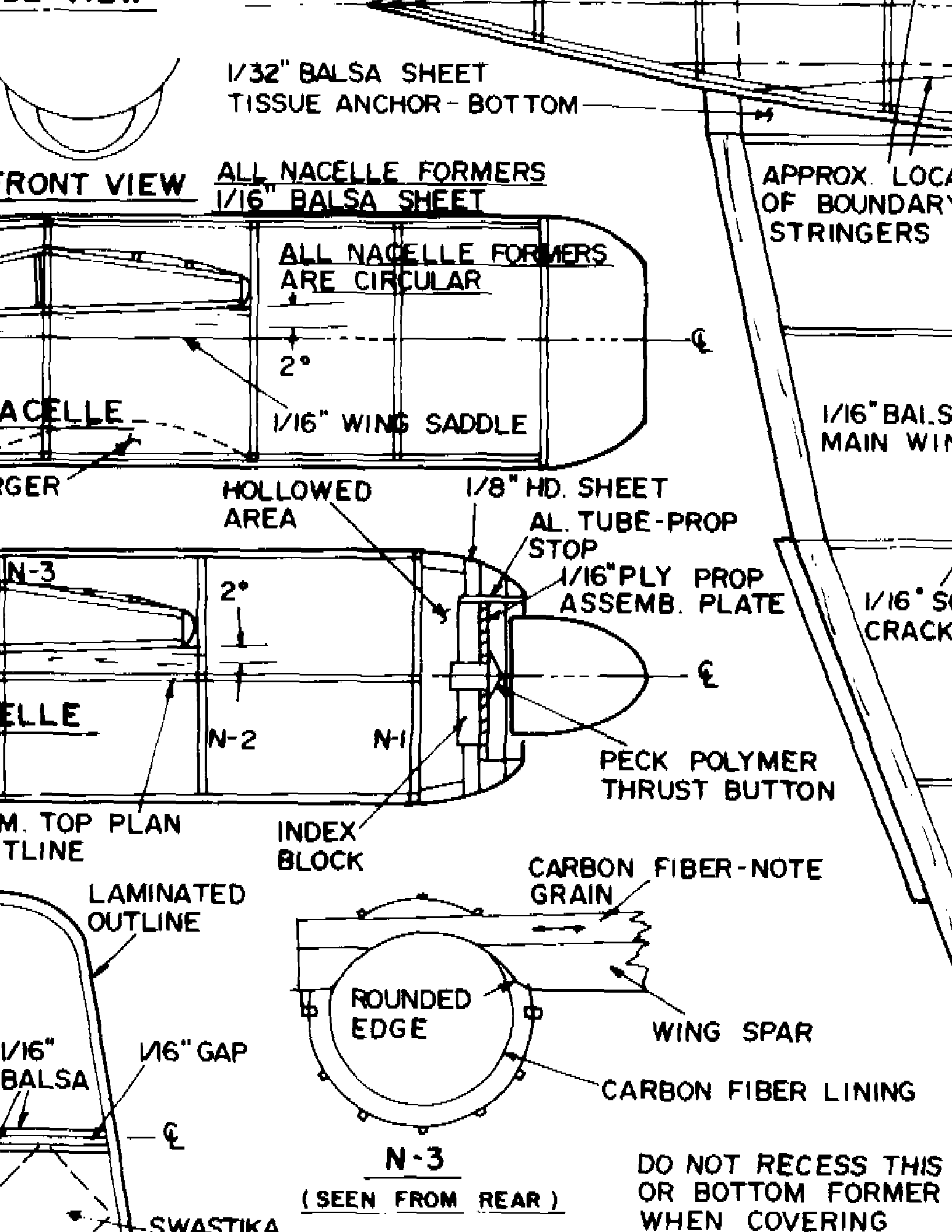
DUE TO CURVED NACELLE
CENTERLINE, PROFILE OUTLINE
IS 2 LAMS OF 1/16" SQ. STRIPS

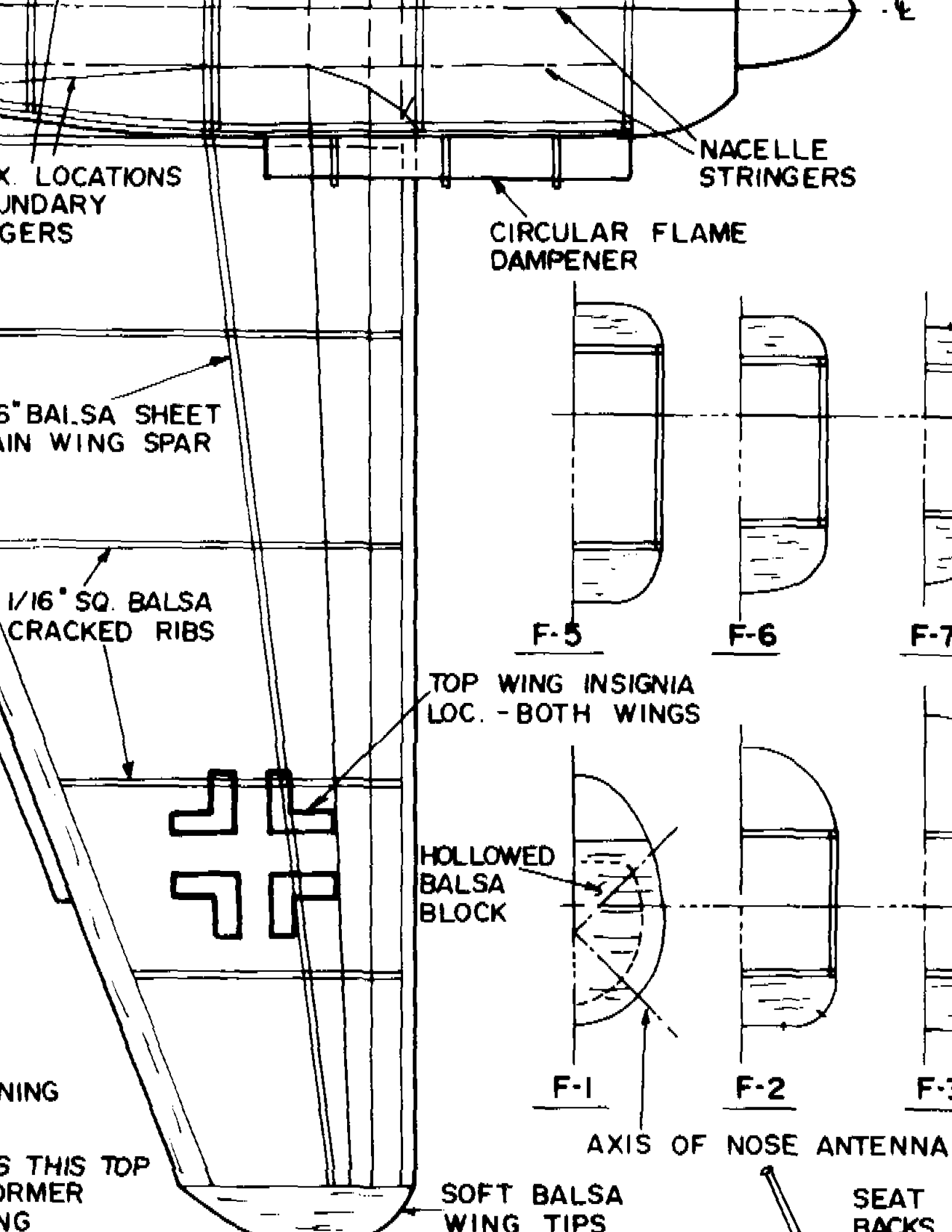
FRONT



ALL NACELLE FORMERS
ARE CIRCULAR-UNDERSIZED
BY 1/16" RADIUS FOR STRINGERS
TO LAY ON TOP - NO NOTCHING







LOCATIONS
BOUNDARY
RIBS

1/8" Balsa SHEET
MAIN WING SPAR

1/16" SQ. Balsa
CRACKED RIBS

HING

THIS TOP
FORMER
HING

NACELLE
STRINGERS

CIRCULAR FLAME
DAMPENER

F-5

F-6

F-7

TOP WING INSIGNIA
LOC. - BOTH WINGS

HOLLOWED
Balsa
BLOCK

F-1

F-2

F-3

AXIS OF NOSE ANTENNA

SOFT Balsa
WING TIPS

SEAT
BACKS

F-9

F-10

F-11

STRINGER LOCATIONS

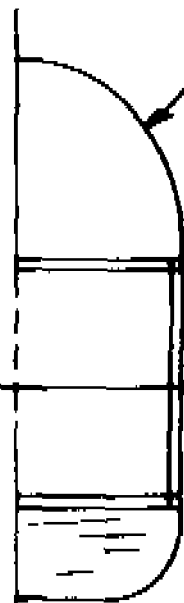


F-7



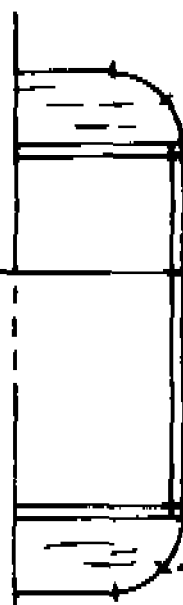
F-8

NOTE: ALL TOP & BOTTOM FORMERS ARE 1/16" Balsa SHEET



F-3

CANOPY OUTLINE



F-4

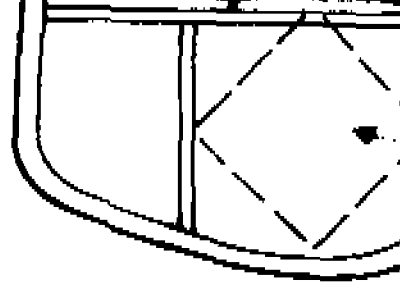
STRINGER LOCATIONS

ANTENNA

SEAT
BACKS

HOLLOWED NOSE
BLOCK

(SEEN FROM FRONT)



BALSA BLOCK

3/32" SQ. UPRIGHTS

TOP CENTER BEGINS AT

E

F-11

F-10

F-9

F-8

F-7

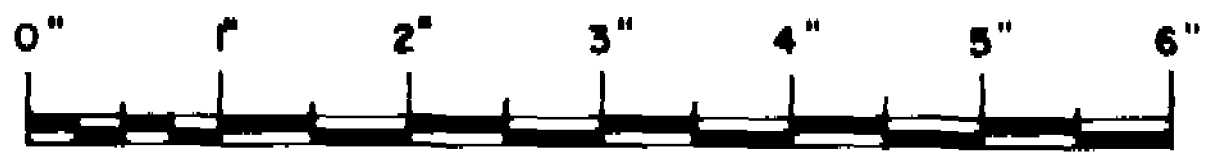
FOAM FAIRING ON TOP OF STABILIZER

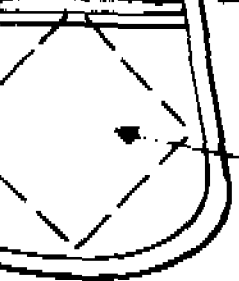
1/16" UPRIGHT AFT

1/16" BALSA SHEET STABILIZER SADDLE

CARBON

CARBON FIBER





SWASTIKA
LOCATION

CENTER STRINGER
IS AT F-5

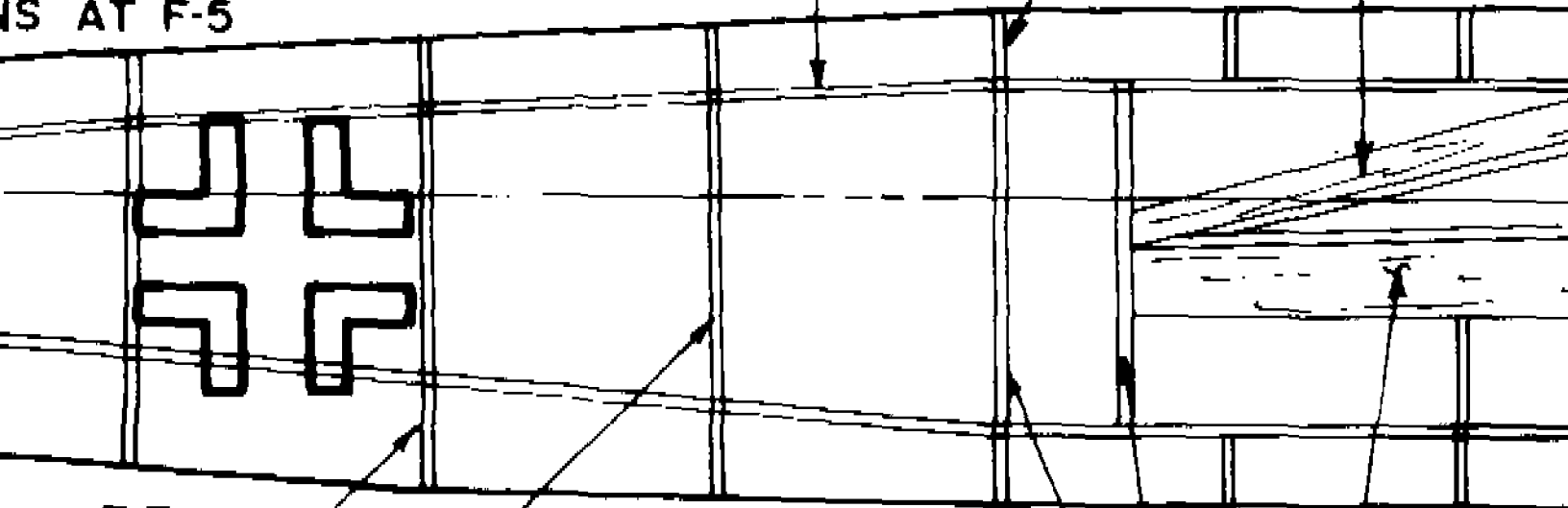
N-3

(SEEN FROM REAR)

DO NOT RECESS THIS
OR BOTTOM FORMER
WHEN COVERING

3/32" SQ.
LONGERONS

1/16" TISSUE



F-7

F-6

F-5

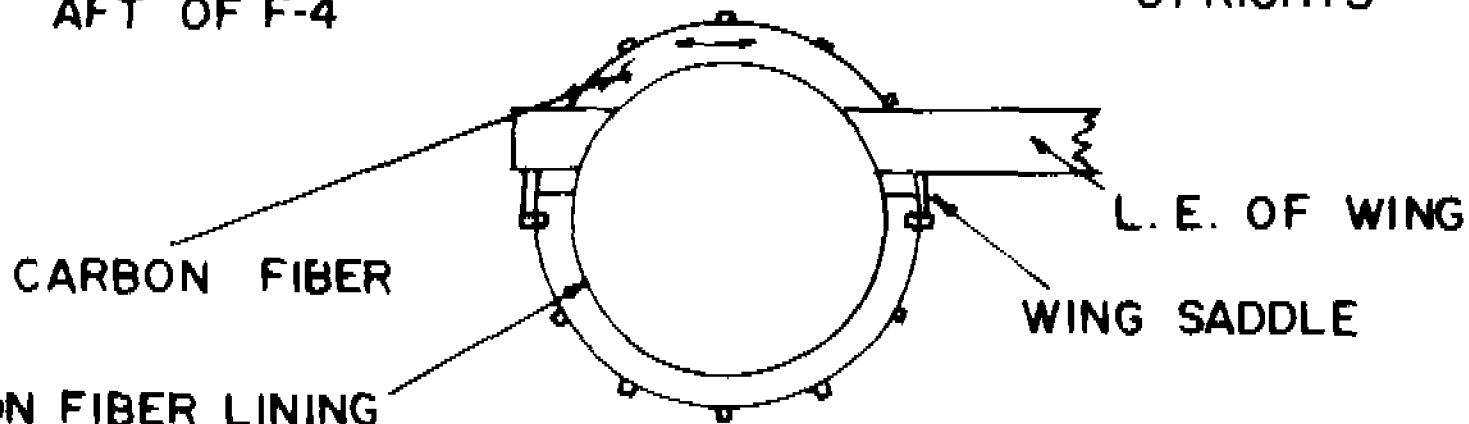
F-4

1/16" SQ.
UPRIGHTS
AFT OF F-4

CENTER BOTTOM
STRINGER BEGINS
AT LAST F-4

3/32" SQ.
UPRIGHTS

1/16" Balsa
WING SADDL



CARBON FIBER

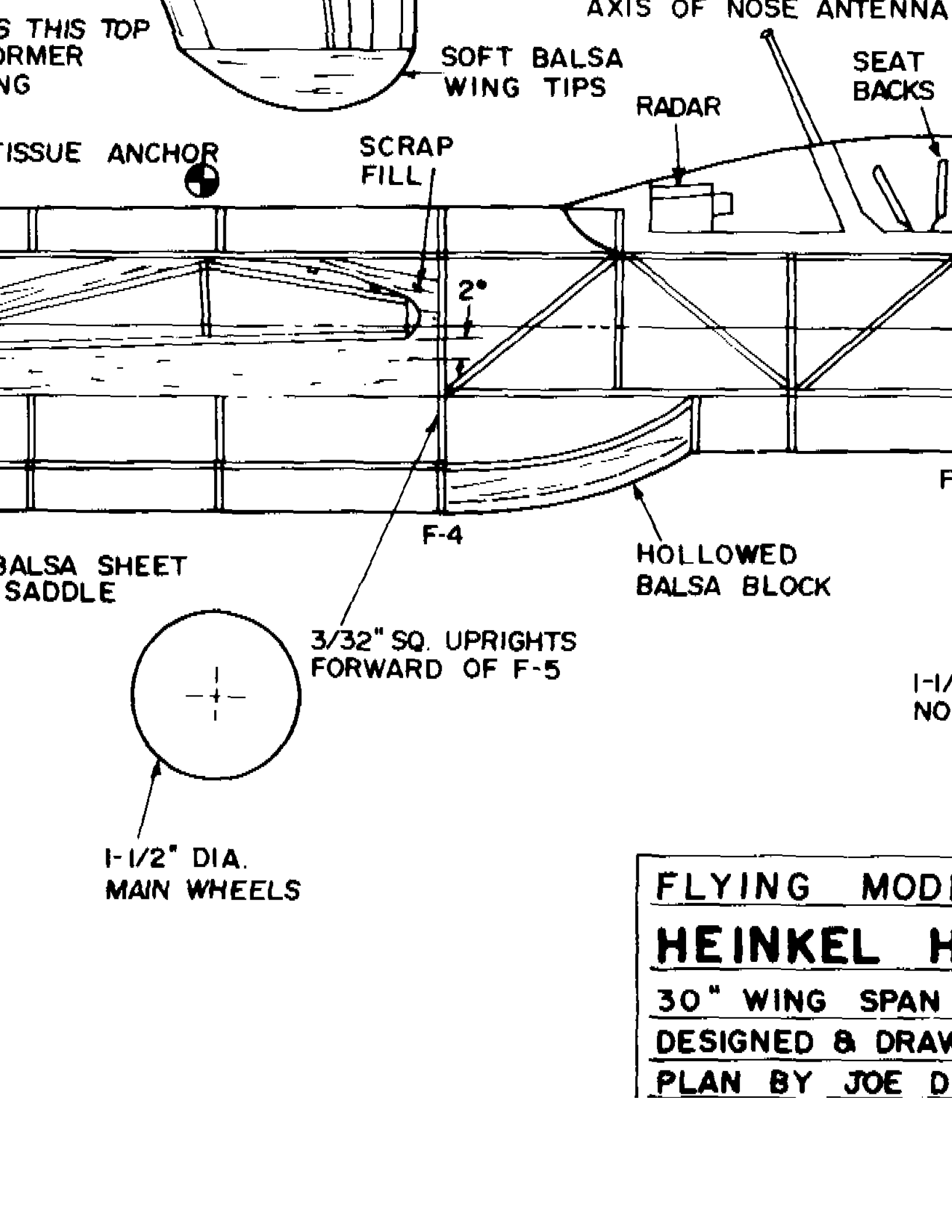
L. E. OF WING

CARBON FIBER LINING

WING SADDLE

← OUTBOARD — N-2 — INBOARD →

(SEEN FROM REAR)



S THIS TOP
 ORMER
 NG

AXIS OF NOSE ANTENNA

SOFT Balsa
 WING TIPS

SEAT
 BACKS

RADAR

ISSUE ANCHOR

SCRAP
 FILL

2°

Balsa SHEET
 SADDLE

F-4

HOLLOWED
 Balsa BLOCK

3/32" SQ. UPRIGHTS
 FORWARD OF F-5

1-1/2
 NO

1-1/2" DIA.
 MAIN WHEELS

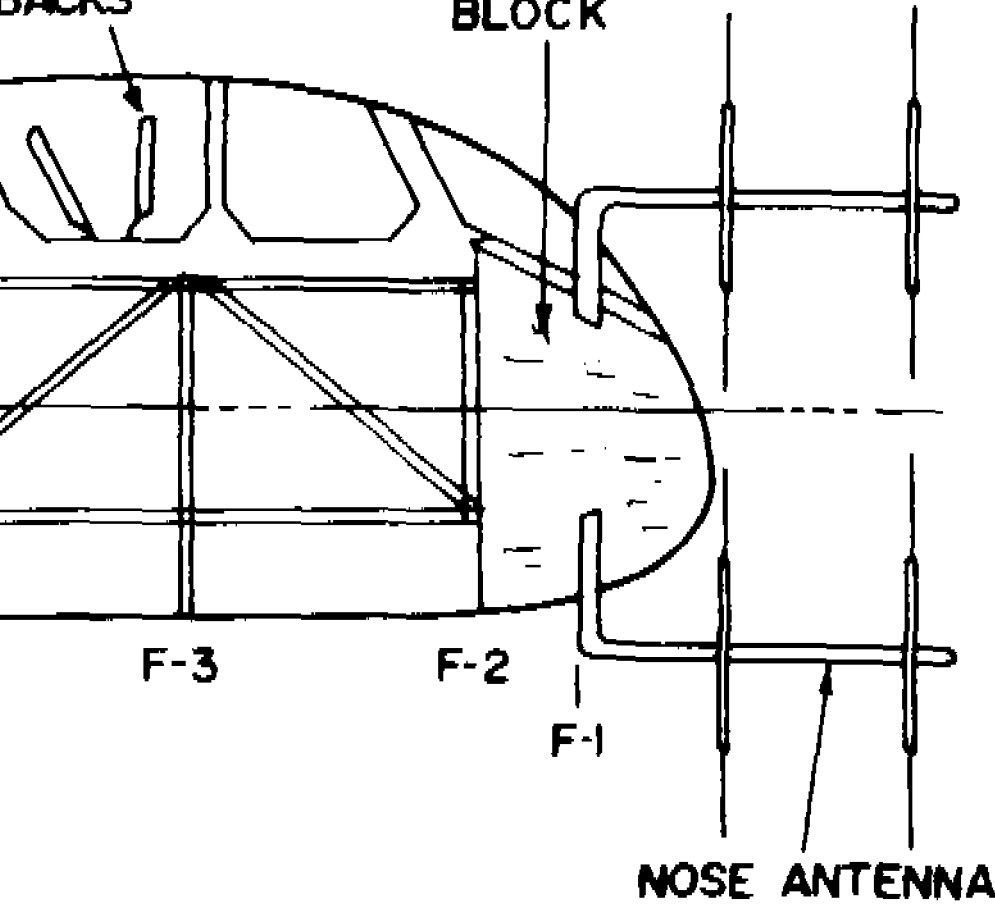
FLYING MOD
HEINKEL H
30" WING SPAN
DESIGNED & DRAW
PLAN BY JOE D

ANTENNA

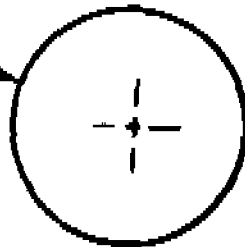
F-4

SEAT
BACKS

HOLLOWED NOSE
BLOCK



1-1/4" DIA.
NOSE WHEEL



MODELS

L HE-219 UHU

SPAN FOR F A C SCALE

DRAWN BY TOM ARNOLD

JOE DEMARCO