

Leading edge 1/16"x1/8"

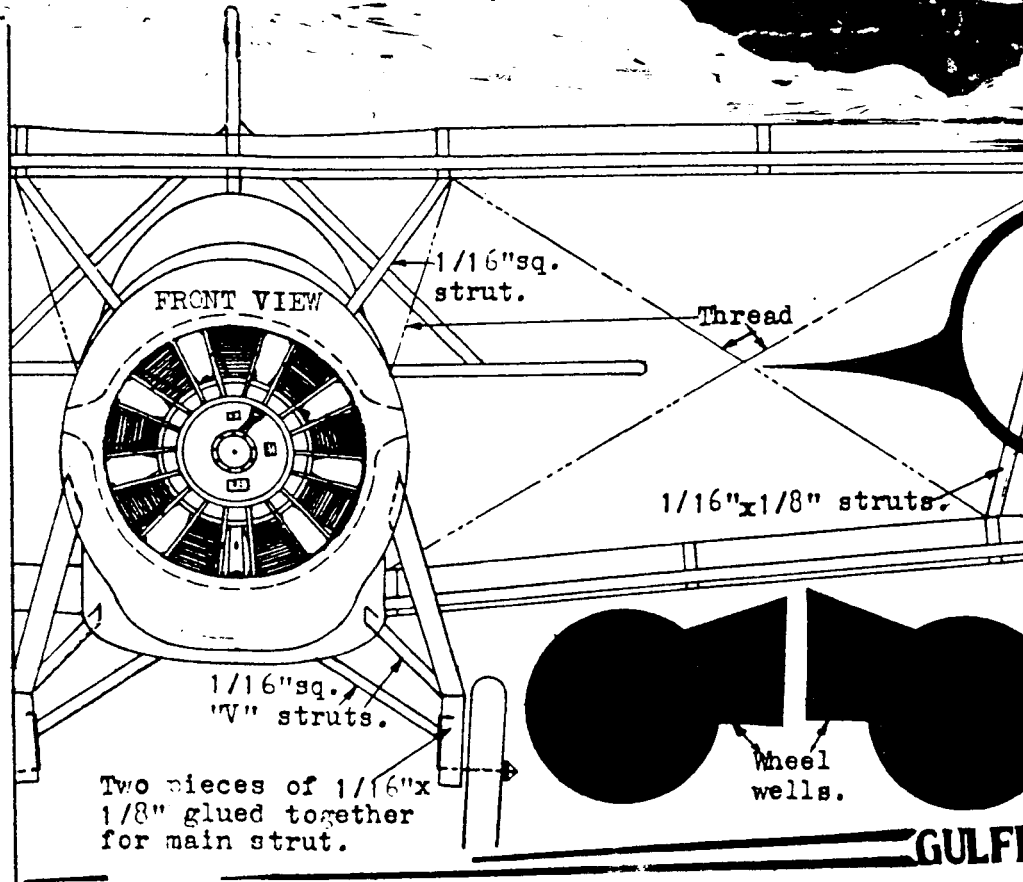
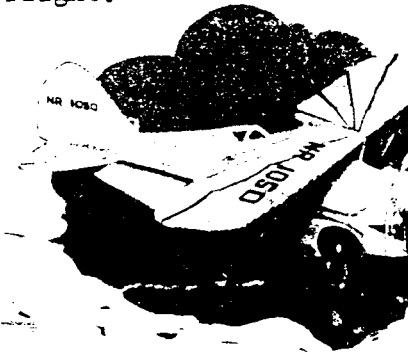
### GENERAL INSTRUCTIONS.

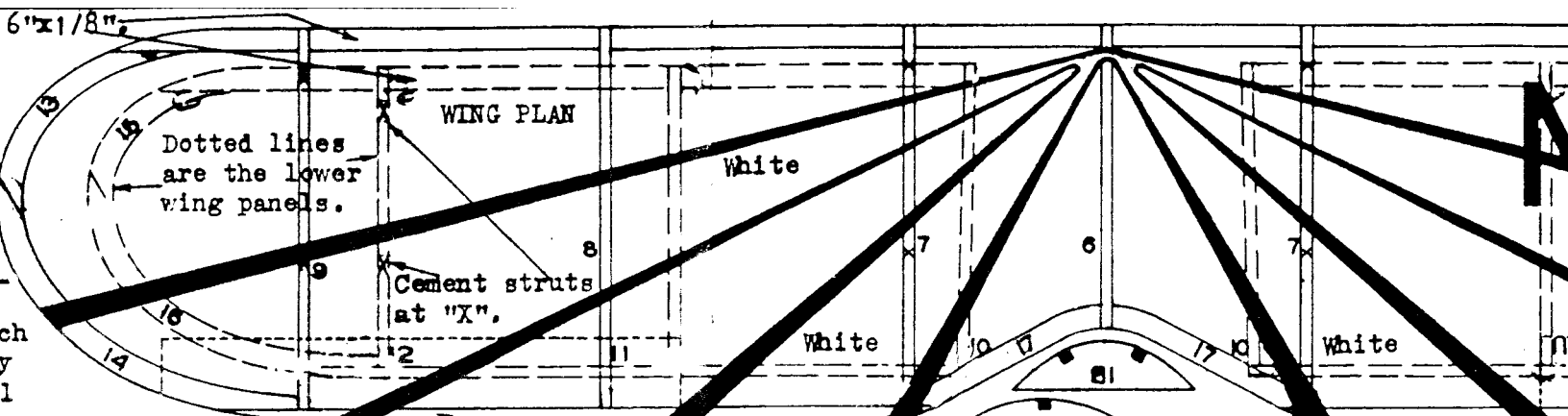
Construct the fuselage first followed by the wings, then the tail surfaces. These may all be constructed directly over the plan using a piece of wax paper or cellophane to protect the drawings. Sand the parts smooth at all joints so as to enable you to get a smooth good looking job when covering the model with the tissue. The tissue is applied with the grain running from nose to tail of the fuselage and from tip to tip on the wing. Single pieces may be used for each side of the wings and tail surfaces. A better job may be done on the fuselage if it is covered with several pieces. When applying tissue remove as many wrinkles as possible. Other wrinkles may be taken out by lightly spraying the covered parts with water. Control lines, decorations, etc., are added next and the model can be assembled.

### FLYING NOTES.

Sand the propeller and assemble it as shown in the side view drawing. Sling the rubber furnished in the kit between the prop. hook and the rear rubber pin. Test the model by gliding. If it stalls, add a little weight to the nose. If it dives, add a little weight to the tail. Test the model until a smooth straight glide is obtained. Wind the model a little and if it still flies straight it is ready for flight.

COLOR  
Cover  
with  
Cover  
with  
and s

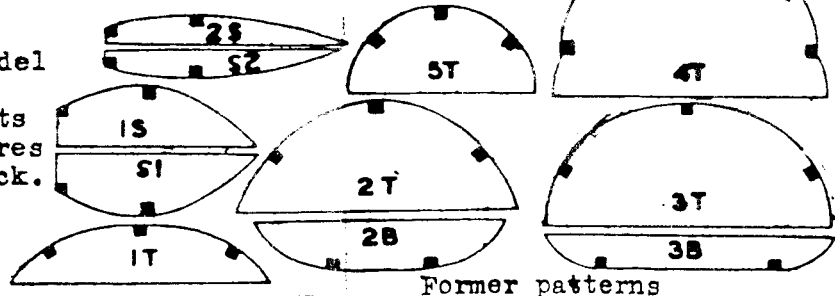




Trailing edge 1/16"x1/16".

**COLOR SCHEME.**

Cover the entire model with orange tissue. Cover the white parts with bond paper. Tires and stripes are black.



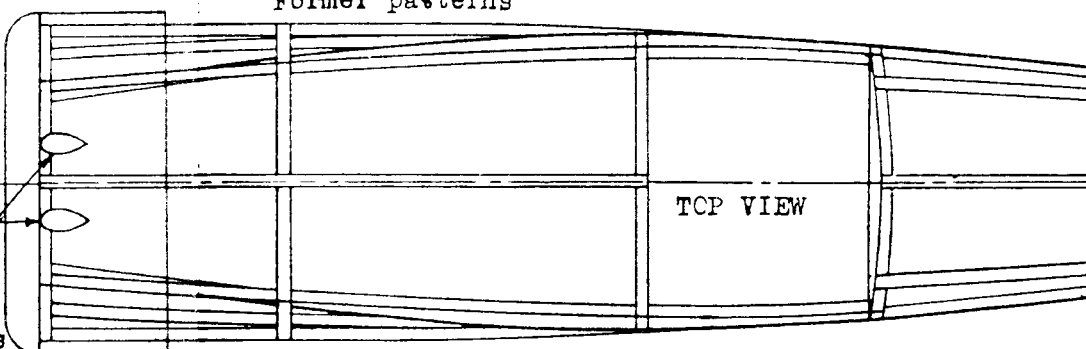
# NR109

Cut the stripes and numbers from the plan and cement their correct position.



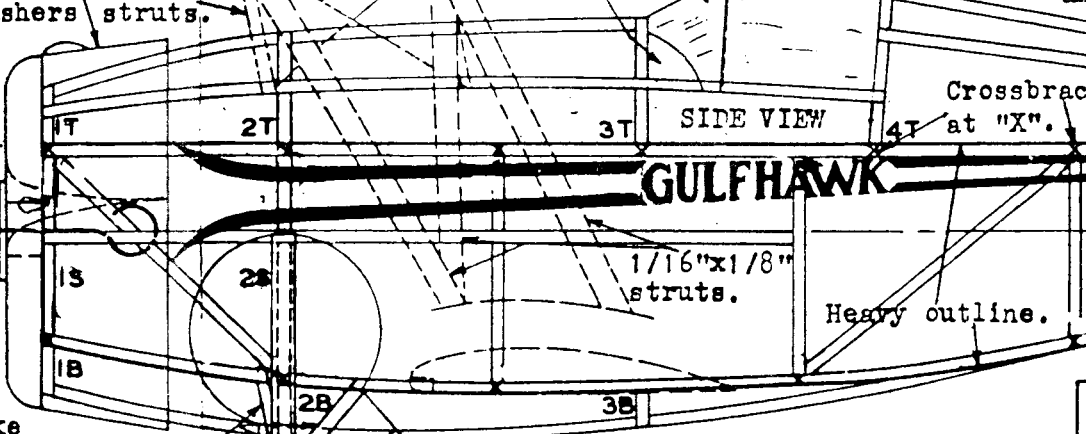
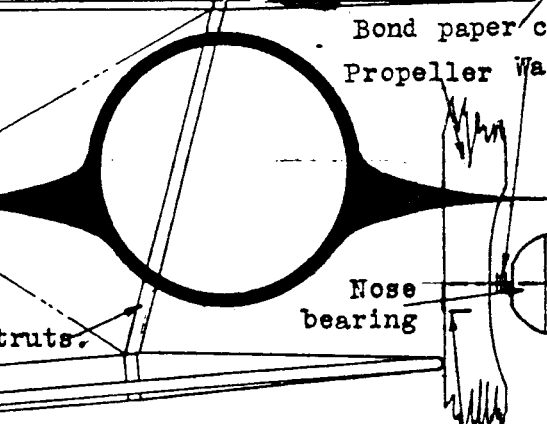
Make push rod fairings from scrap.

Wing tips and edges stabilizer and are sanded



Bond paper cowl. 1/16"sq. Propeller Washers struts.

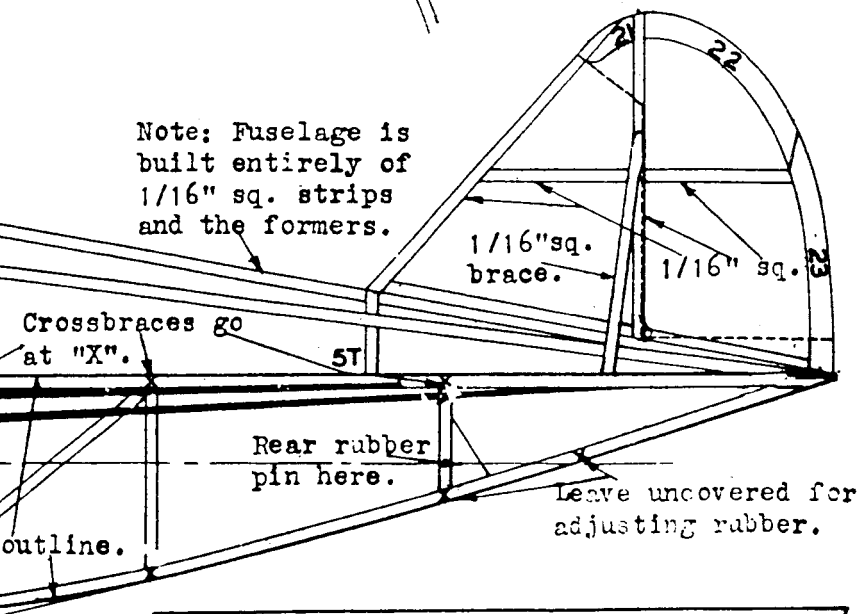
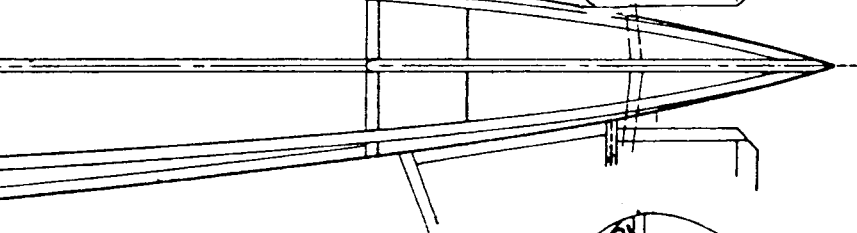
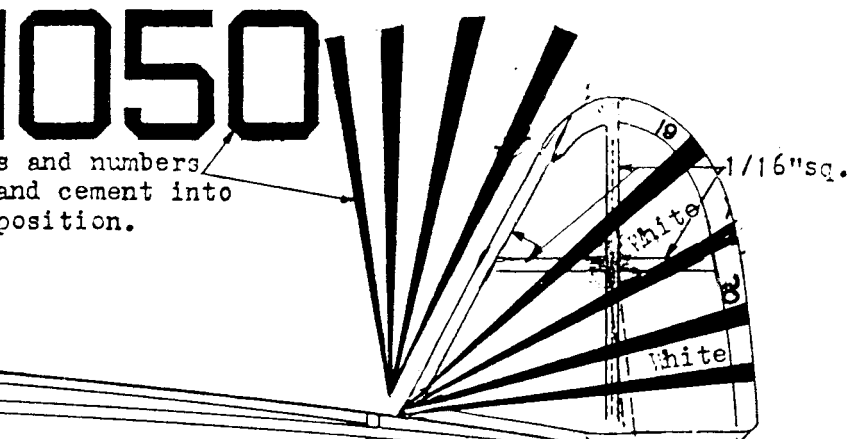
Thread Bond paper. Cellophane cabin.



Bend hook like this and glue into propeller.

Build the fuselage first by making two flat sides within the heavy outline drawn above. Connect these side pieces with cross braces placed at the "X" marks. Add the formers watching their numbers. Place stringers in their correct positions. Then add any details and sand the framework smooth.

# GULFHAWK



two flat  
own above.  
ss braces  
ormers  
ngers in  
any de-  
h.

**AL WILLIAM'S GULFHAWK**

**EXACT SCALE FLYING MODEL**

Copyright 1938

**THE PEERLESS MODEL AIRPLANE COMPANY**

CLEVELAND, OHIO U. S. A.