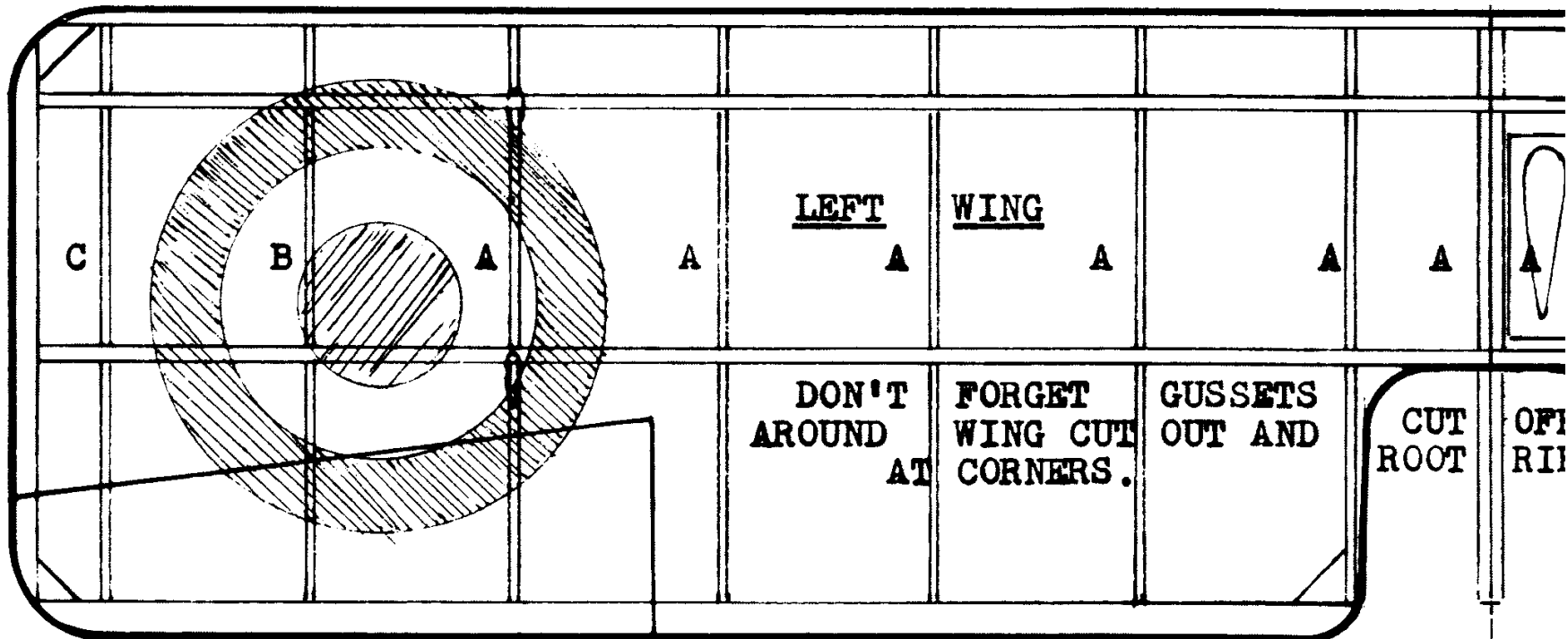


MAKE LEADING EDGES FROM 1/16 X 1/8 FIRM BALSA.

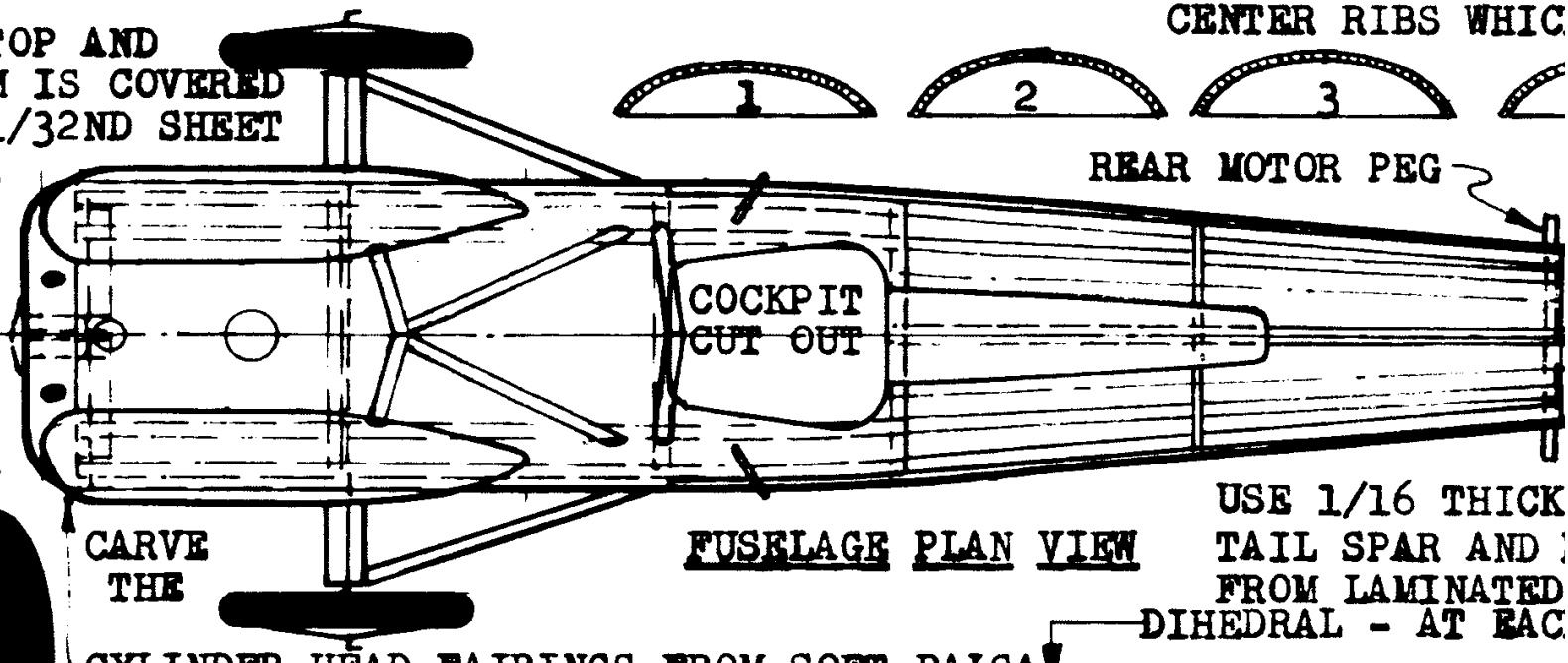
SPARS ARE



MAKE TRAILING EDGES FROM 1/16 X 3/16 LIGHT BALSA. ALL RIBS ARE CUT CENTER RIBS WHICH

NOSE TOP AND BOTTOM IS COVERED WITH 1/32ND SHEET BALSA.

NOSE BLOCK IS 1/4TH THICK BALSA.

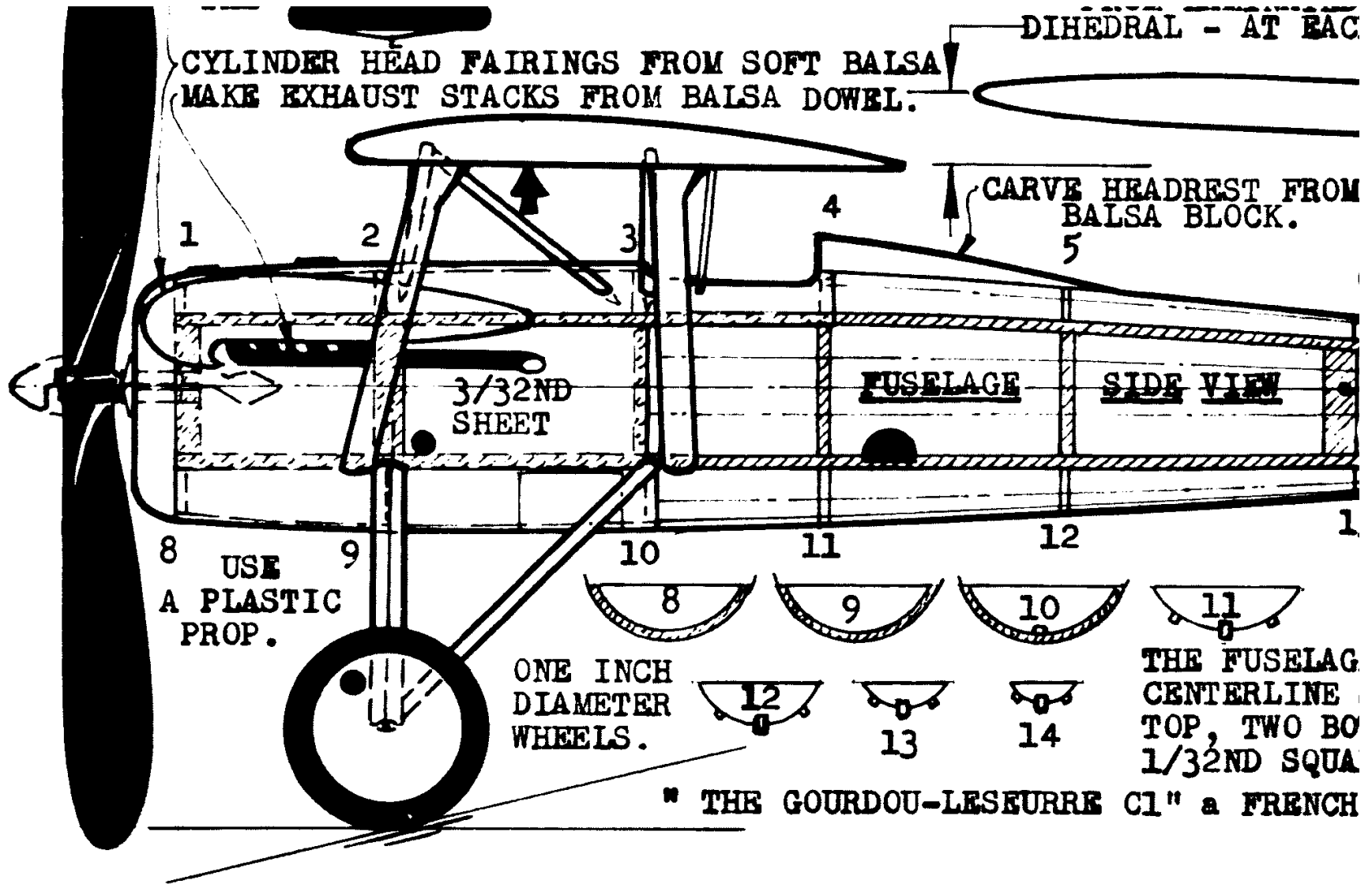


CARVE THE

FUSELAGE PLAN VIEW

USE 1/16 THICK TAIL SPAR AND FROM LAMINATED DIHEDRAL - AT EACH





CYLINDER HEAD FAIRINGS FROM SOFT BALSAM  
 MAKE EXHAUST STACKS FROM BALSAM DOWEL.

DIHEDRAL - AT EACH

CARVE HEADREST FROM  
 BALSAM BLOCK.

8 USE  
 A PLASTIC  
 PROP.

3/32ND  
 SHEET

FUSELAGE

SIDE VIEW

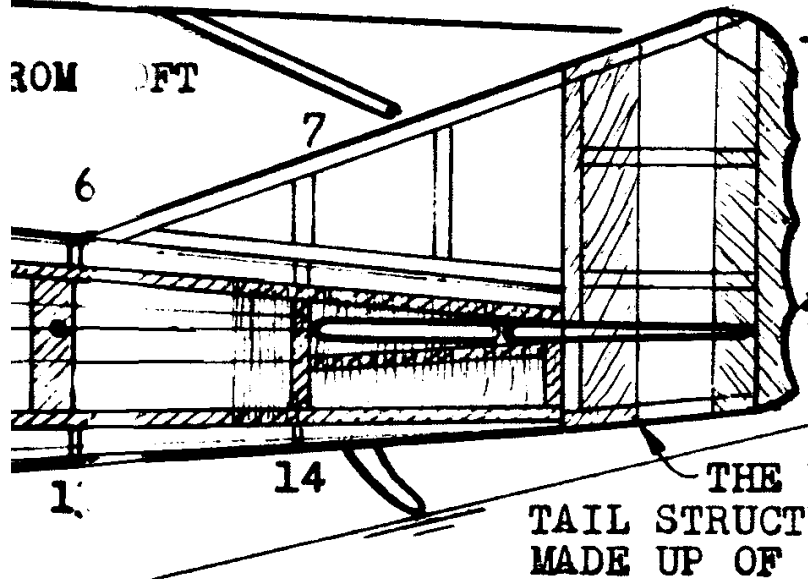
ONE INCH  
 DIAMETER  
 WHEELS.

THE FUSELAGE  
 CENTERLINE  
 TOP, TWO BO  
 1/32ND SQUA

" THE GOURDOU-LESEURRE C1" a FRENCH

EACH WING TIP.

FROM LEFT



WING STRUTS ARE 1/16 X 3/16 Balsa,

CABANE STRUTS ARE MADE FROM BASSWOOD.

THE VERTICAL TAIL STRUCTURE IS MADE UP OF 1/16TH THICK Balsa STICKS.

THE LANDING GEAR STRUTS ARE MADE OF BASSWOOD.

USE A "PECK POLYMER PLASTIC THRUST BUTTON."

LARGE LONGERONS AND TOP AND BOTTOM MAIN STRINGERS ARE 1/16TH THICK. FOUR BOTTOM, AND TWO SIDE STRINGERS ARE QUARTER Balsa.

1 PEANUT by *Kalt Mooney*

03-14-80

