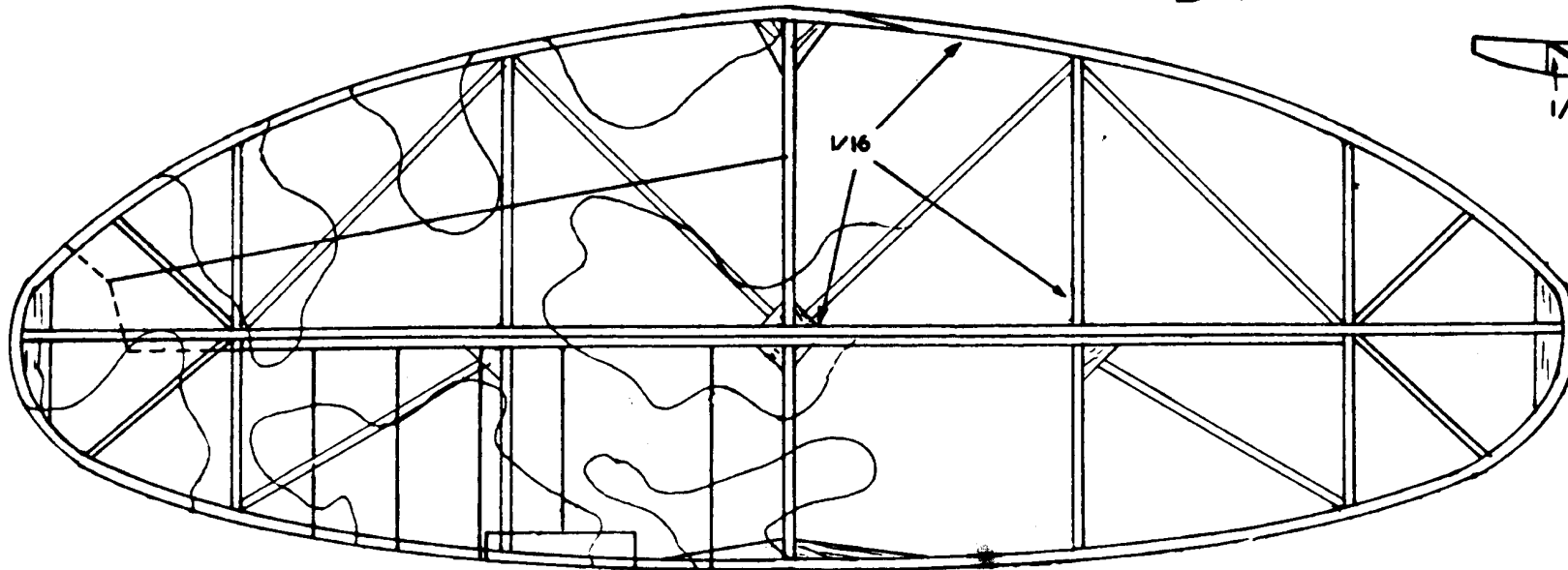
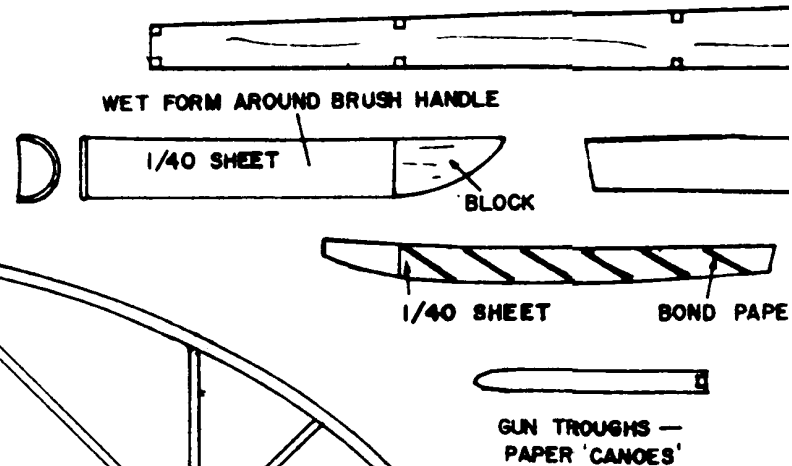
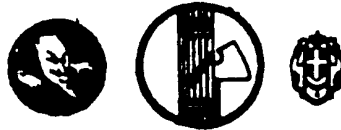


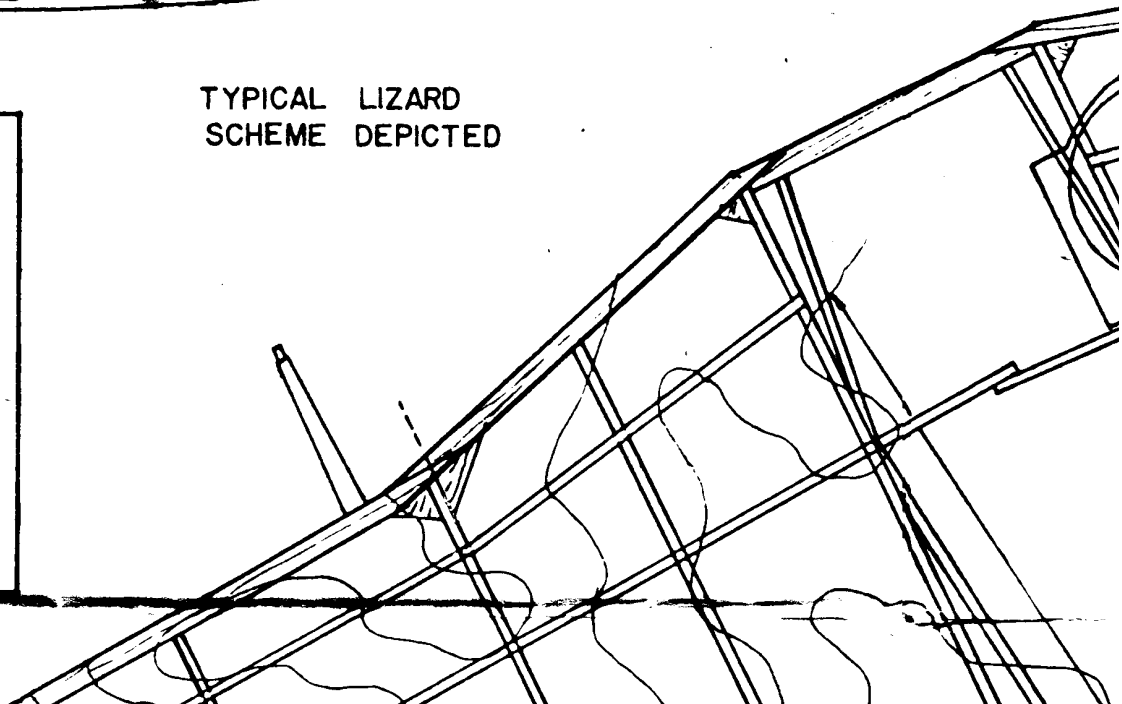
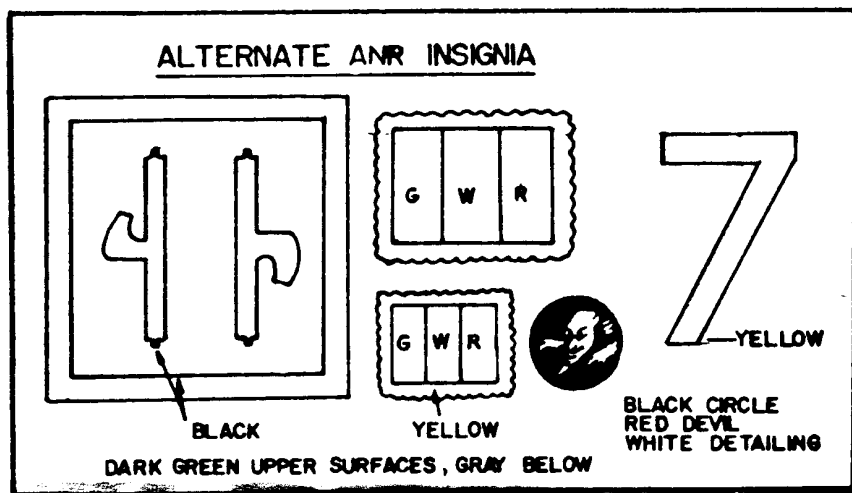


STARBOARD

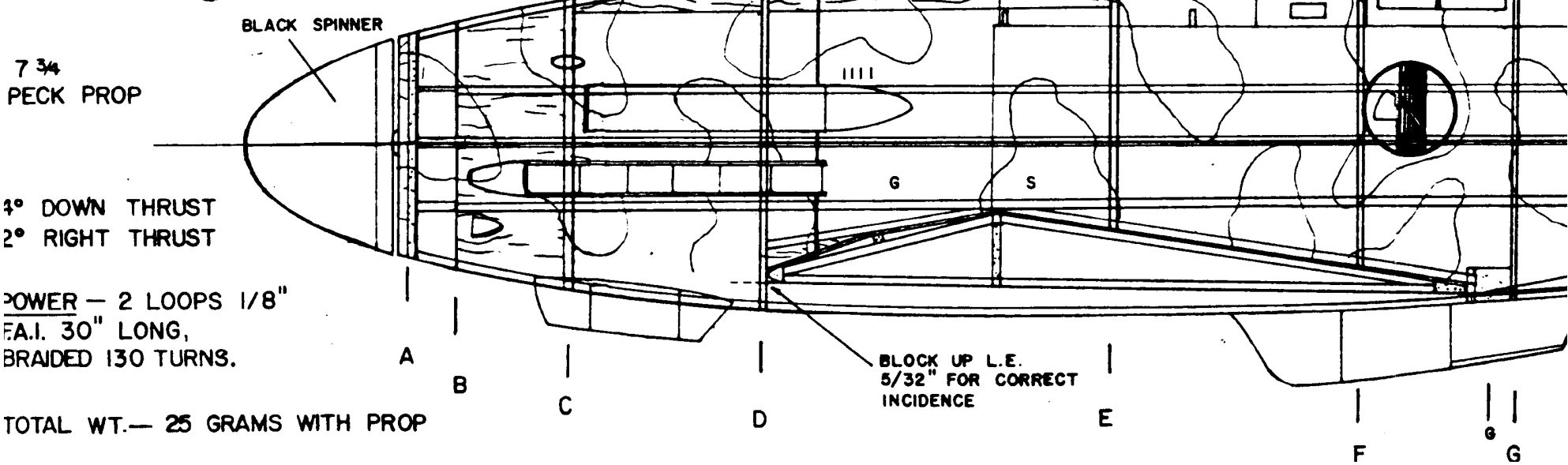
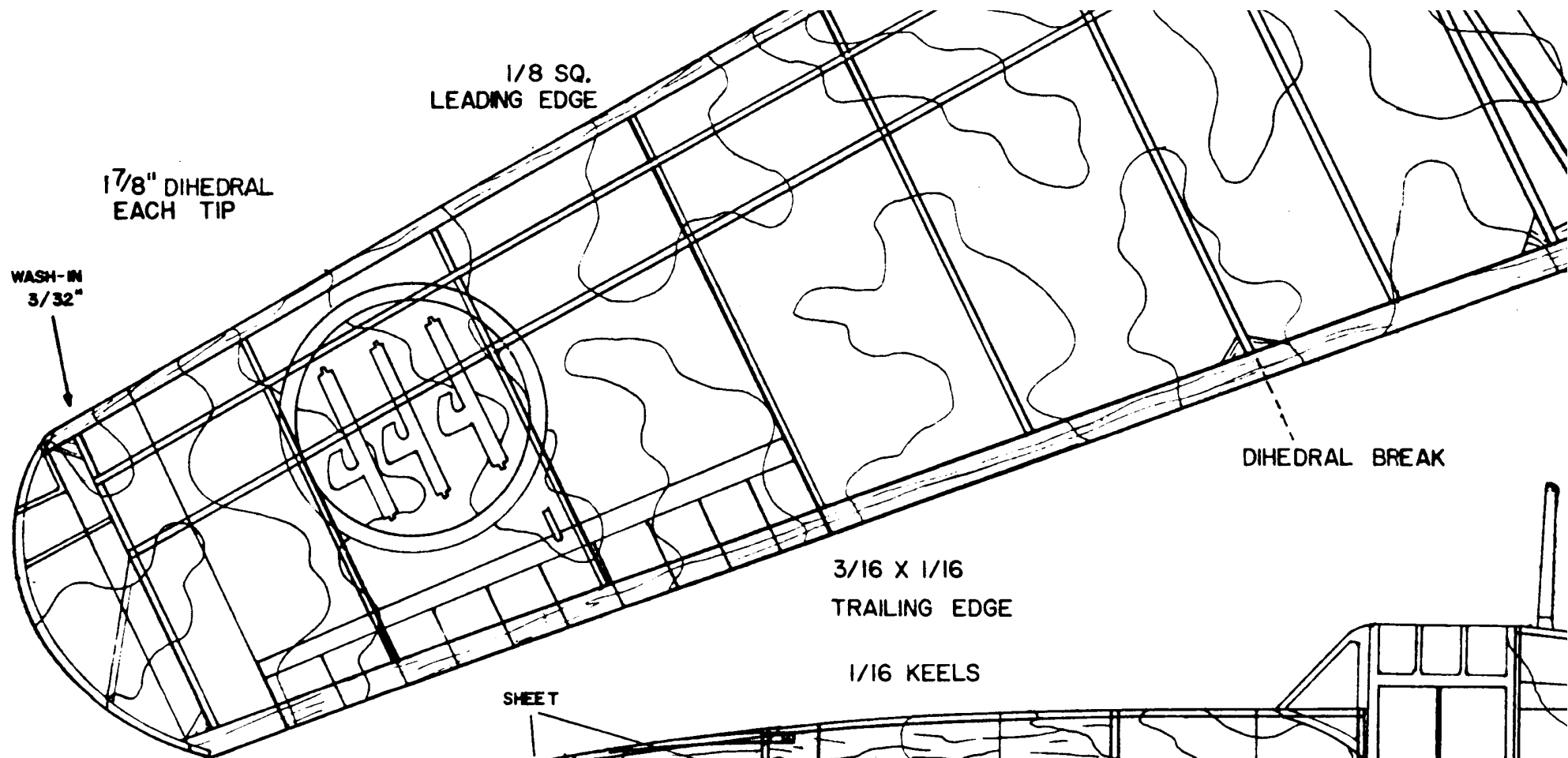


1/16 TURB

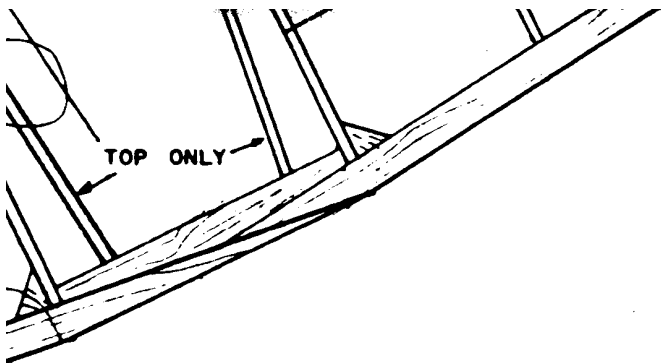
TYPICAL LIZARD  
SCHEME DEPICTED







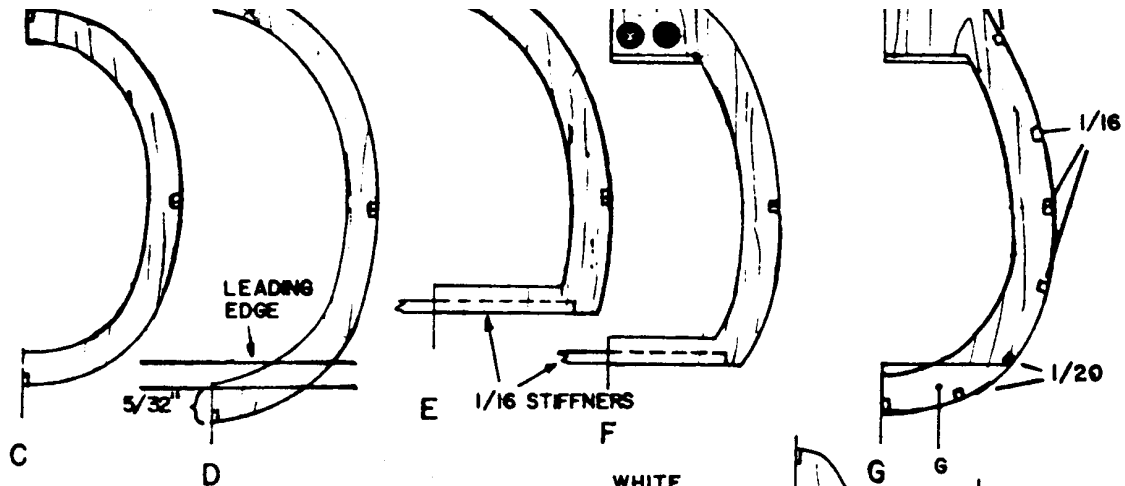
TOTAL WT.— 25 GRAMS WITH PROP



**FORMERS**

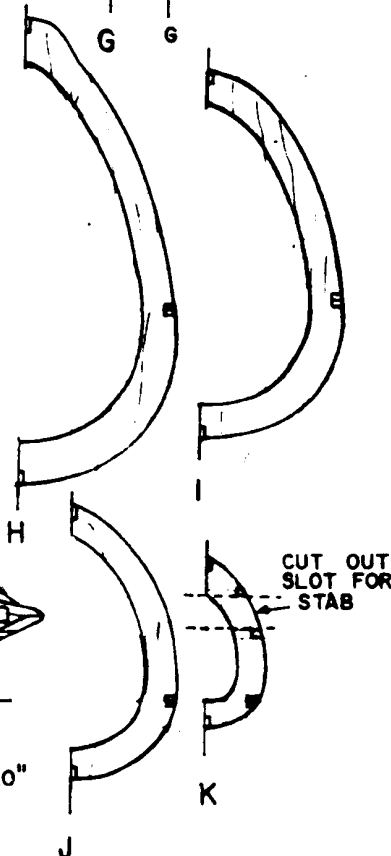
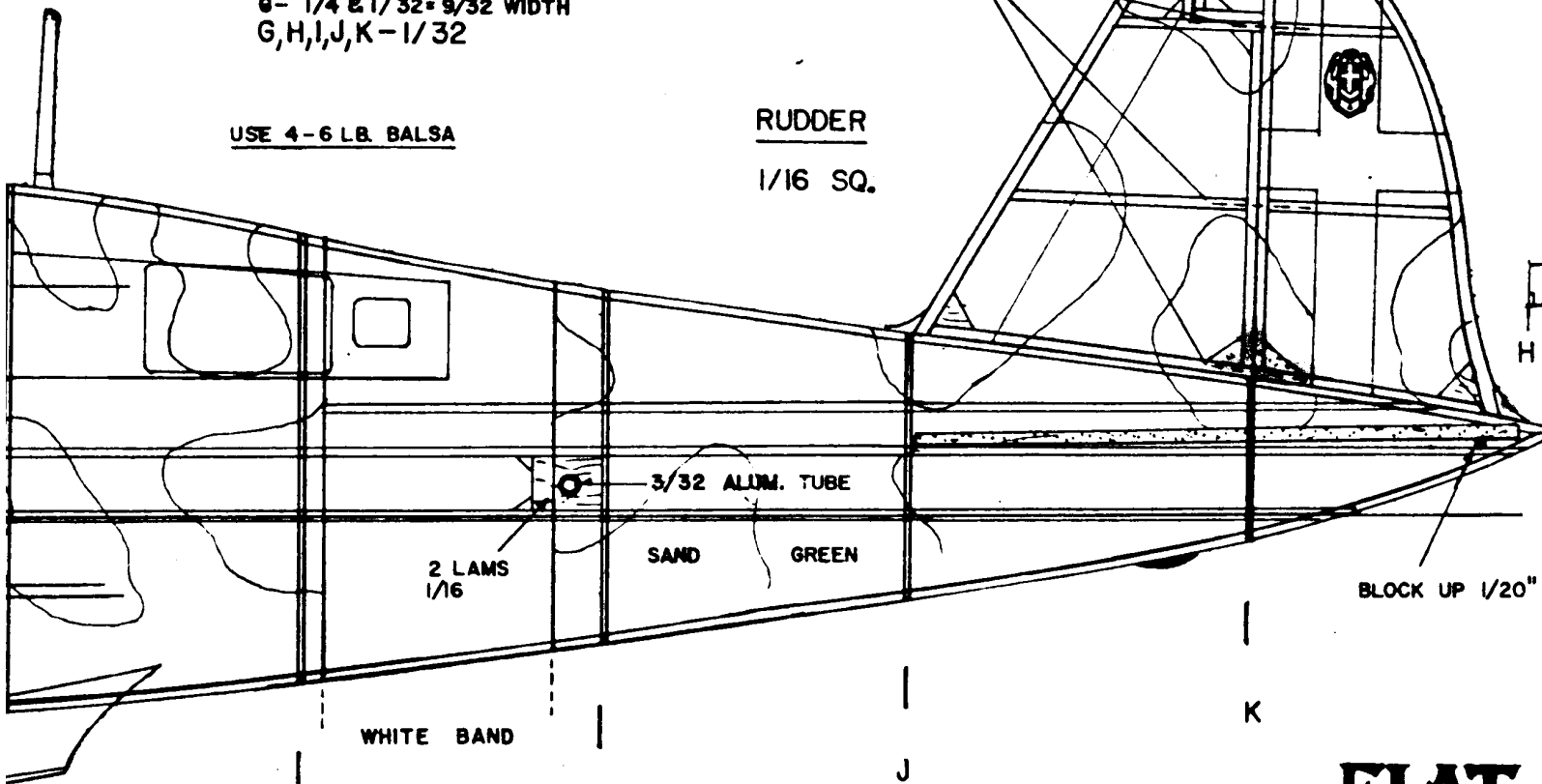
- A- 2 LAMS 1/16, CROSS GRAIN
- B- 1/4
- C, D, E- 1/16
- F- 1/32
- G- 1/4 & 1/32 = 9/32 WIDTH
- H, I, J, K- 1/32

USE 4-6 LB. Balsa



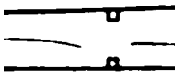
**RUDDER**

1/16 SQ.

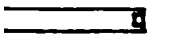


**FIAT G-55  
CENTAUR**

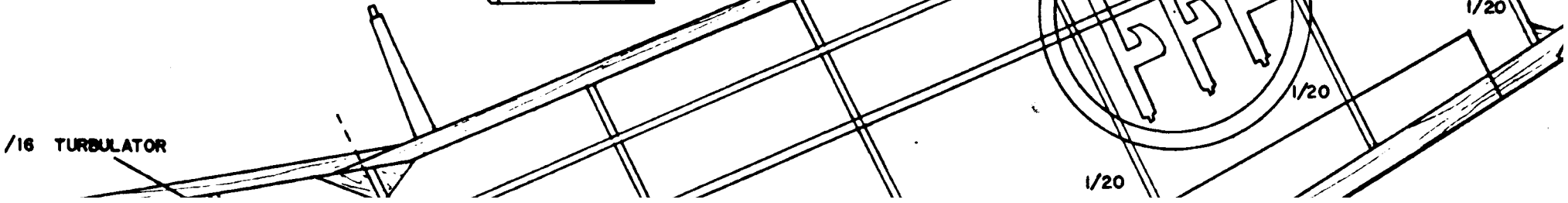
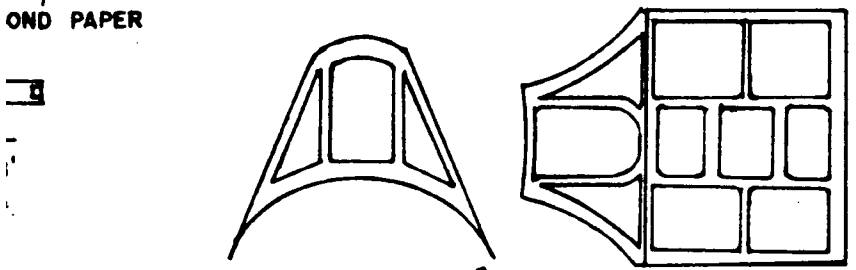
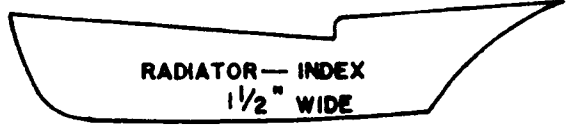
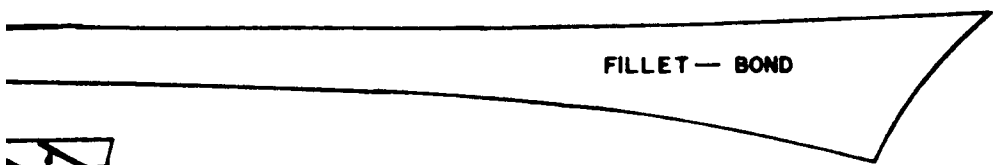
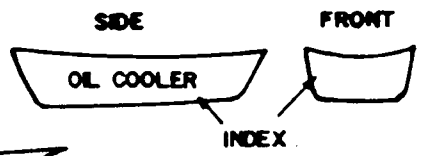
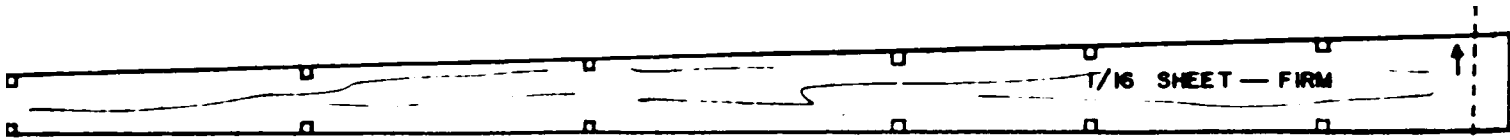
BY



BOND



ROUGHS —  
'CANOES'

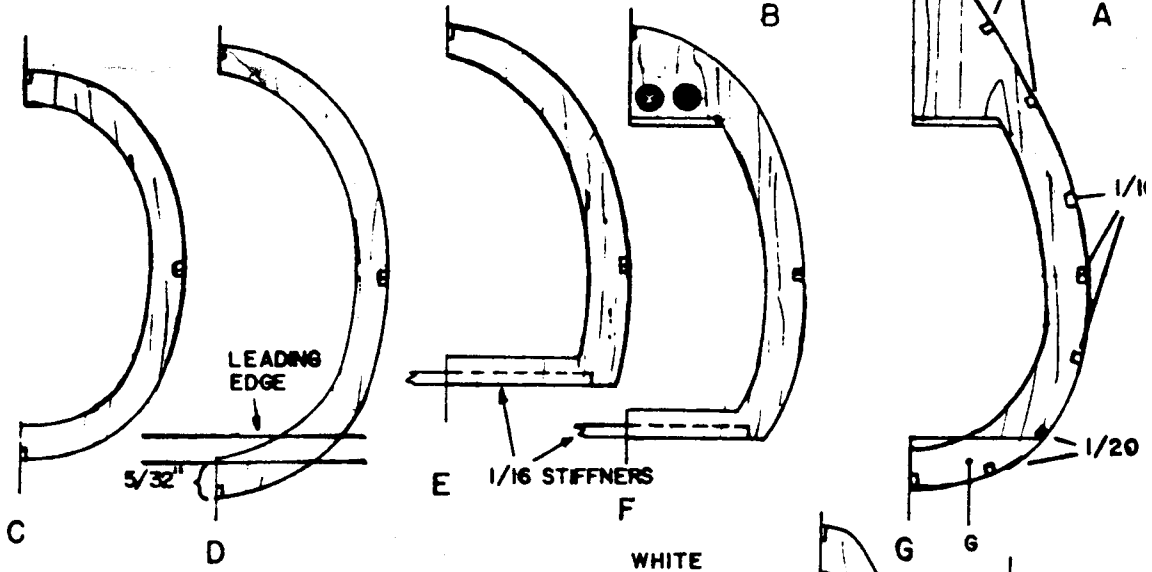
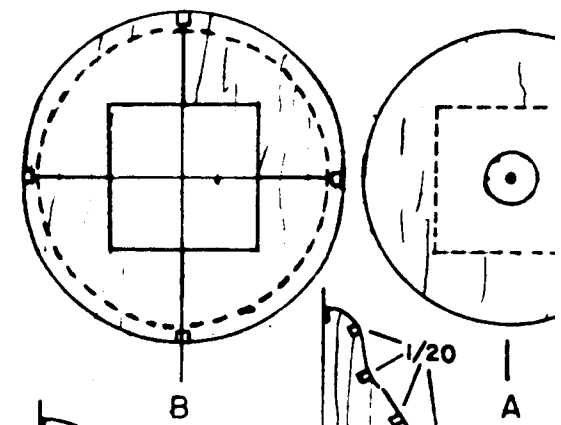
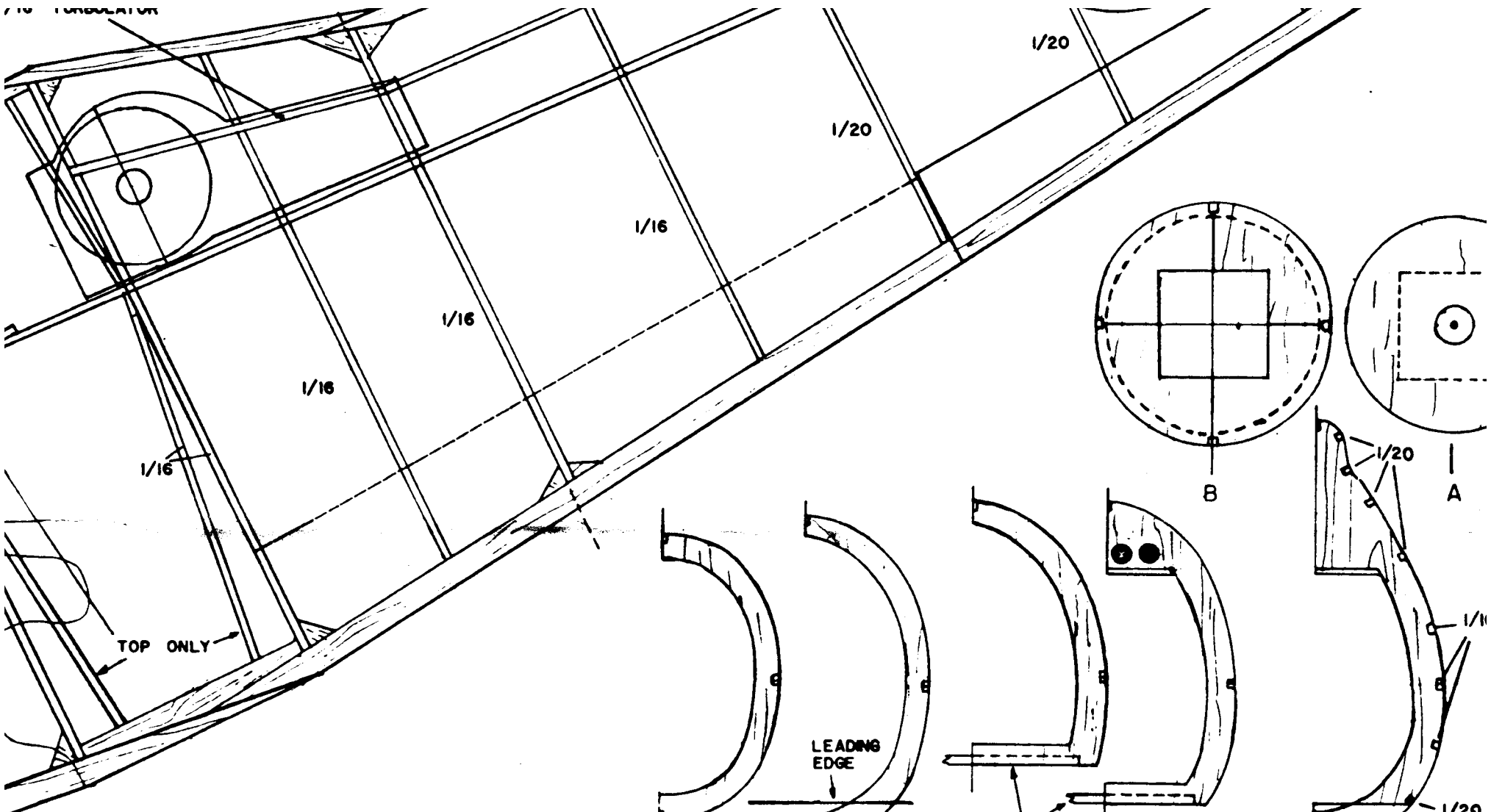


J





REAK



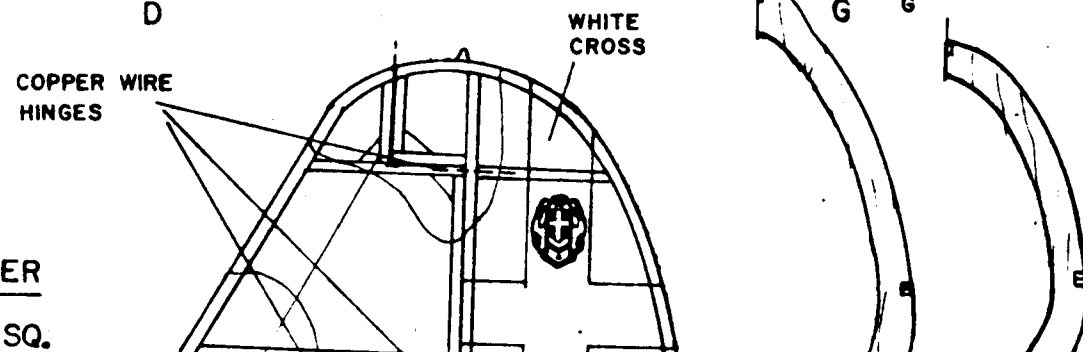
**FORMERS**

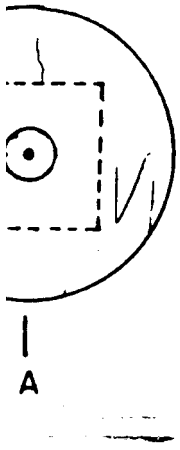
- A - 2 LAMS 1/16, CROSS GRAIN
- B - 1/4
- C, D, E - 1/16
- F - 1/32
- G - 1/4 & 1/32 = 9/32 WIDTH
- H, I, J, K - 1/32

USE 4-6 LB. BALSA

**RUDDER**

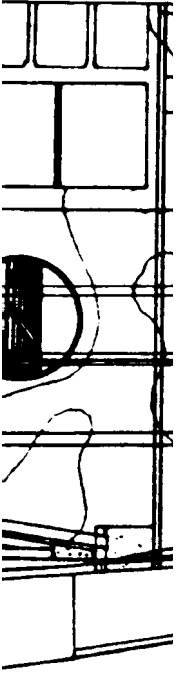
1/16 SQ.





1/20

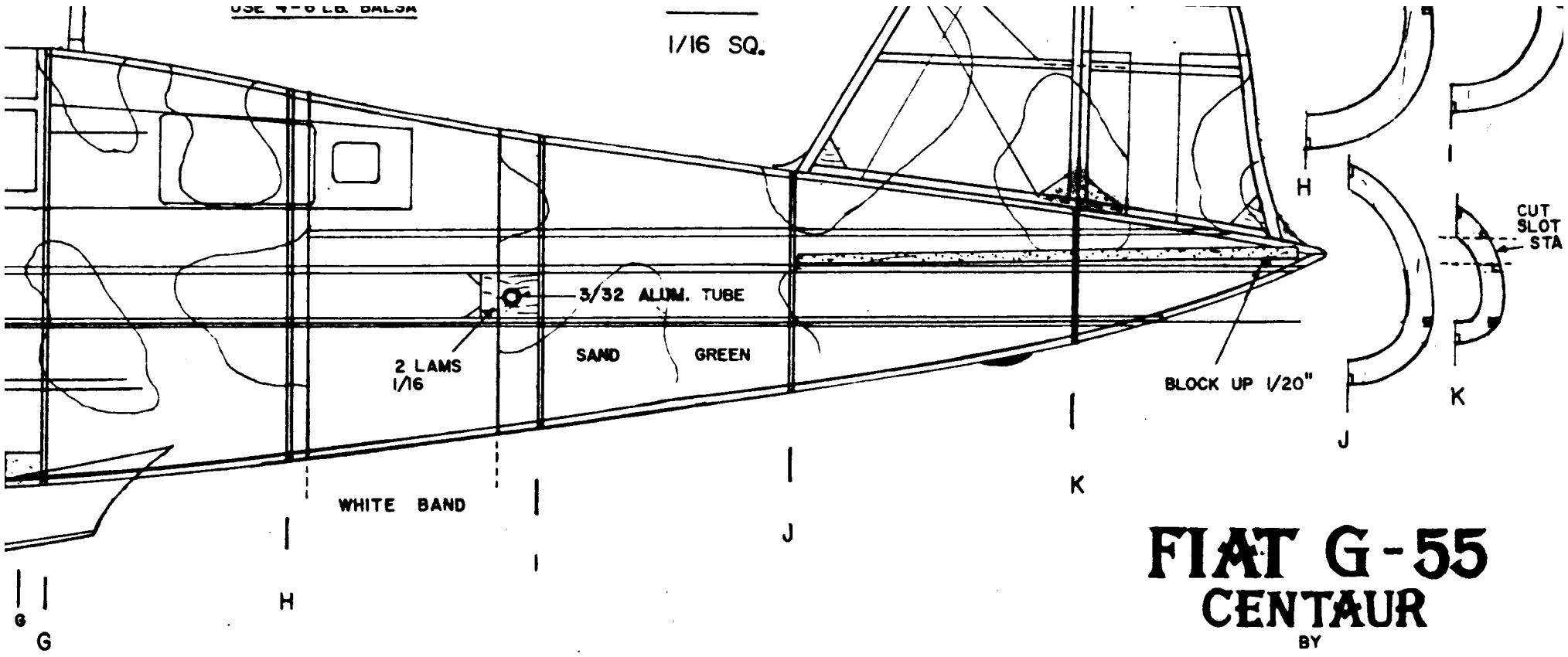




||  
e G

USE 4-0 LB. BALSAM

1/16 SQ.



# FIAT G-55 CENTAUR

BY  
DAVID G. SMITH



CUT OUT  
SLOT FOR  
- STAB