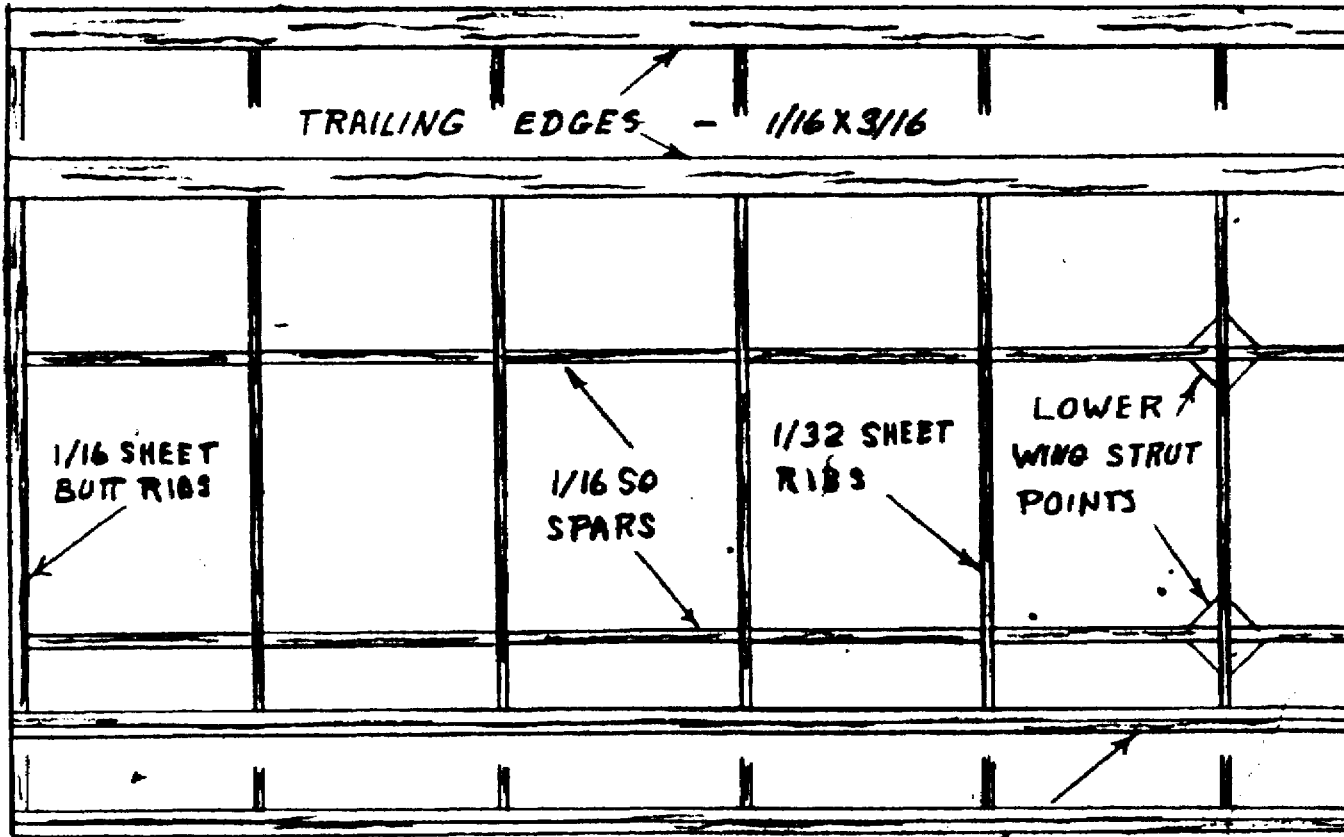


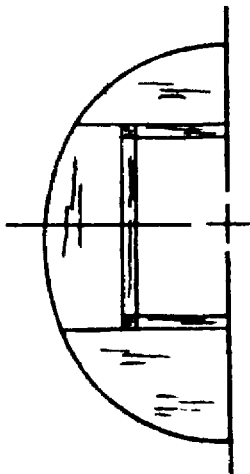
# WINGS



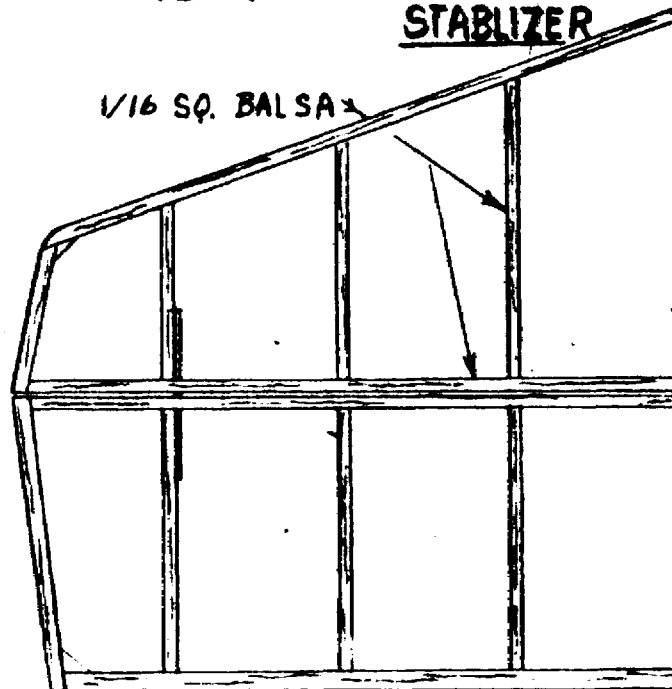
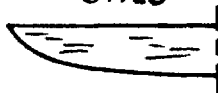
# STABILIZER

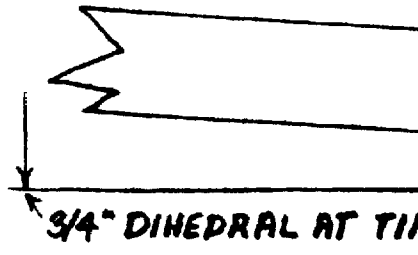
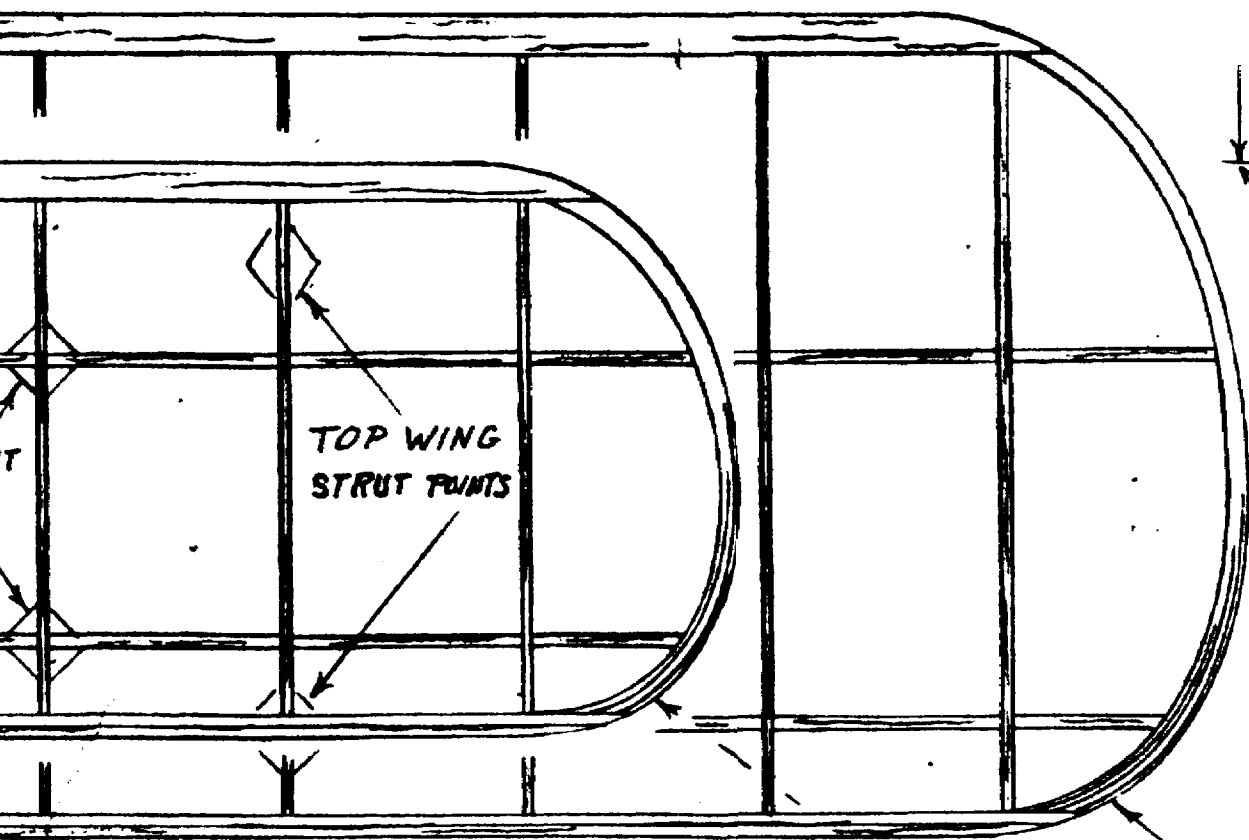
STA. 2

1/16 SQ. BALSAX

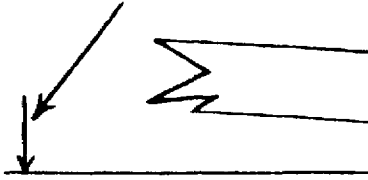


STA. 3

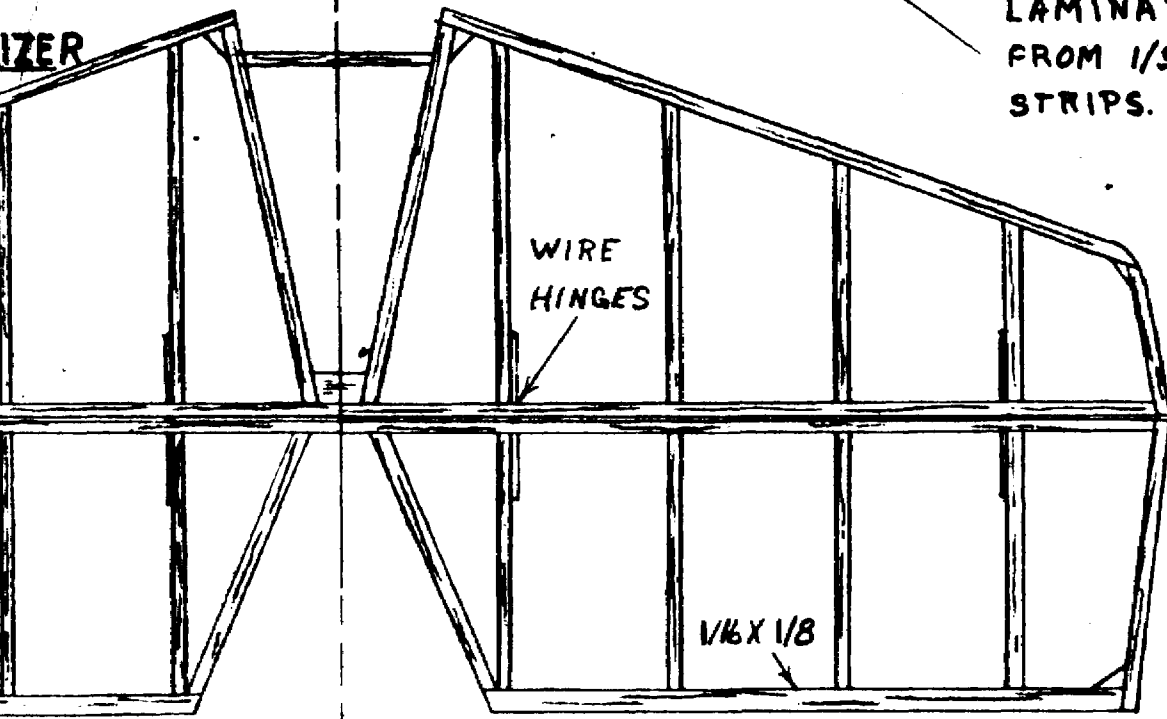




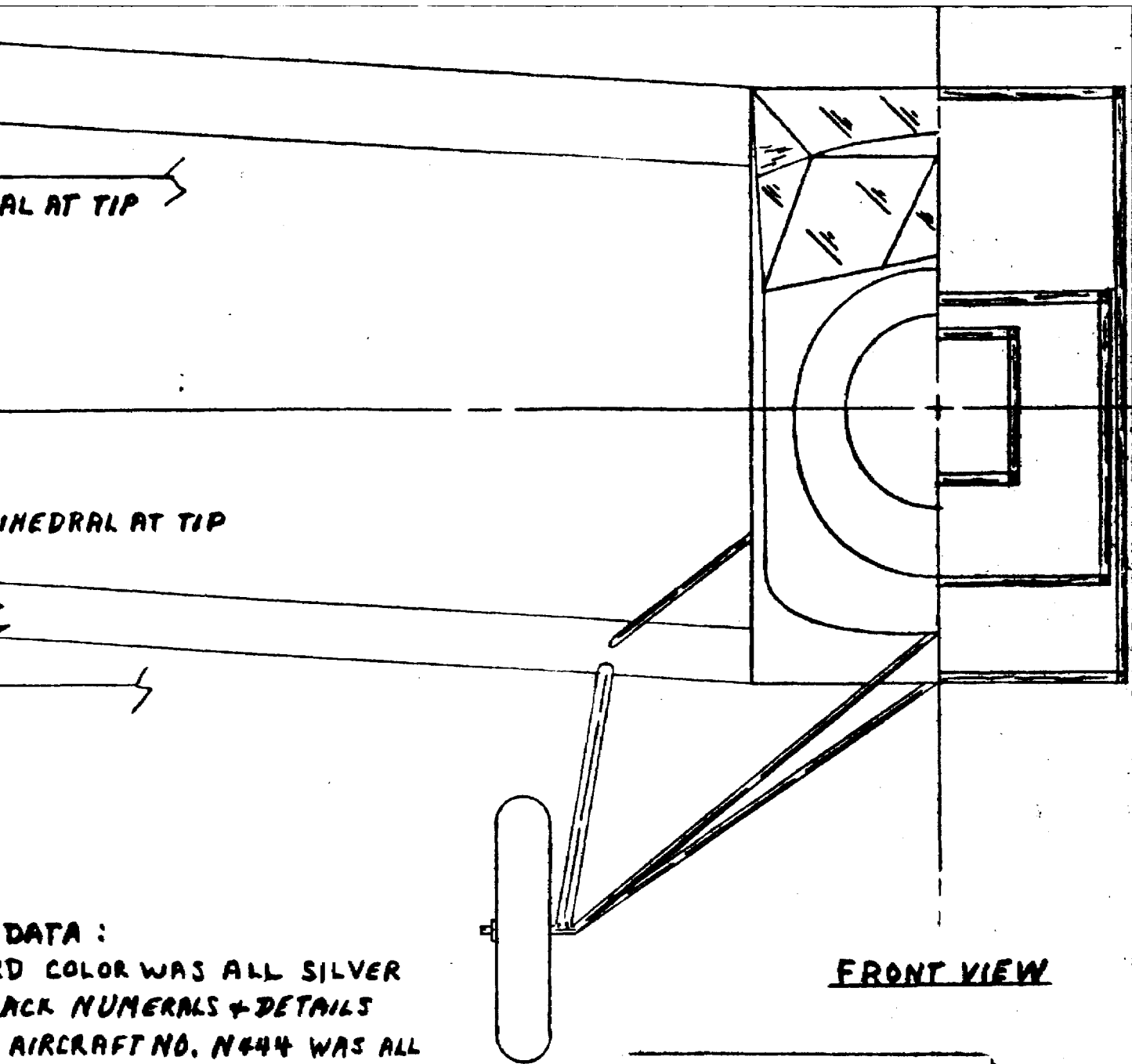
5/8" DIHEDRAL



LAMINATE TIPS FROM 1/32 X 3/32 STRIPS.

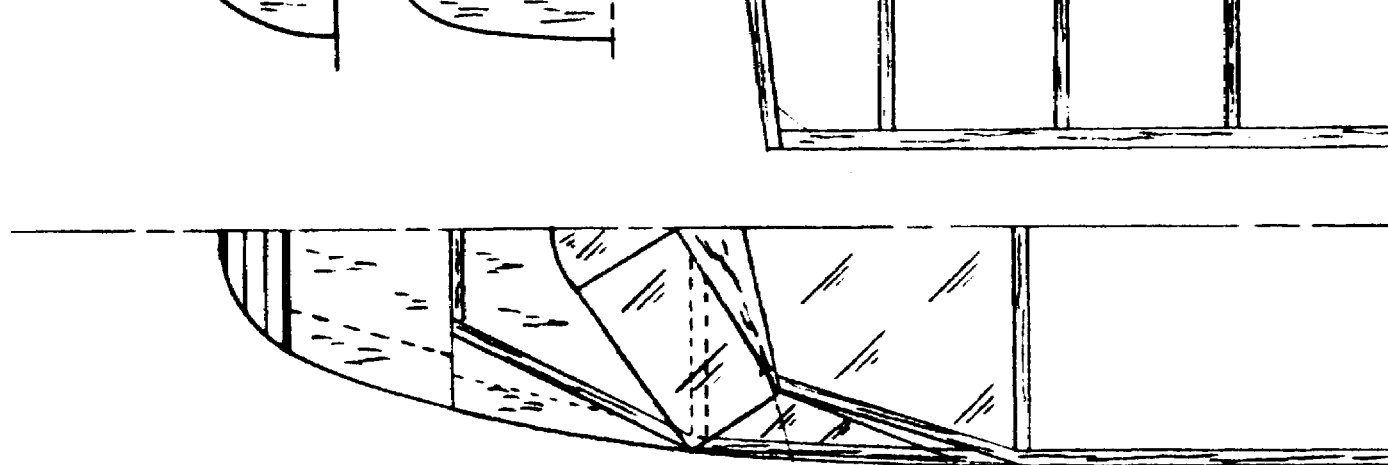


- COLOR DATA :
- STANDARD COLOR WITH BLACK NUM
  - IN 1962 AIRCRAF YELLOW WITH BLACK BLACK FUSELAGE



DATA :  
 D COLOR WAS ALL SILVER  
 CK NUMERALS + DETAILS  
 AIRCRAFT NO. N444 WAS ALL  
 WITH BLACK NUMERALS AND  
 SELAGE STRIPE + DETAILS.





1

2

3

4

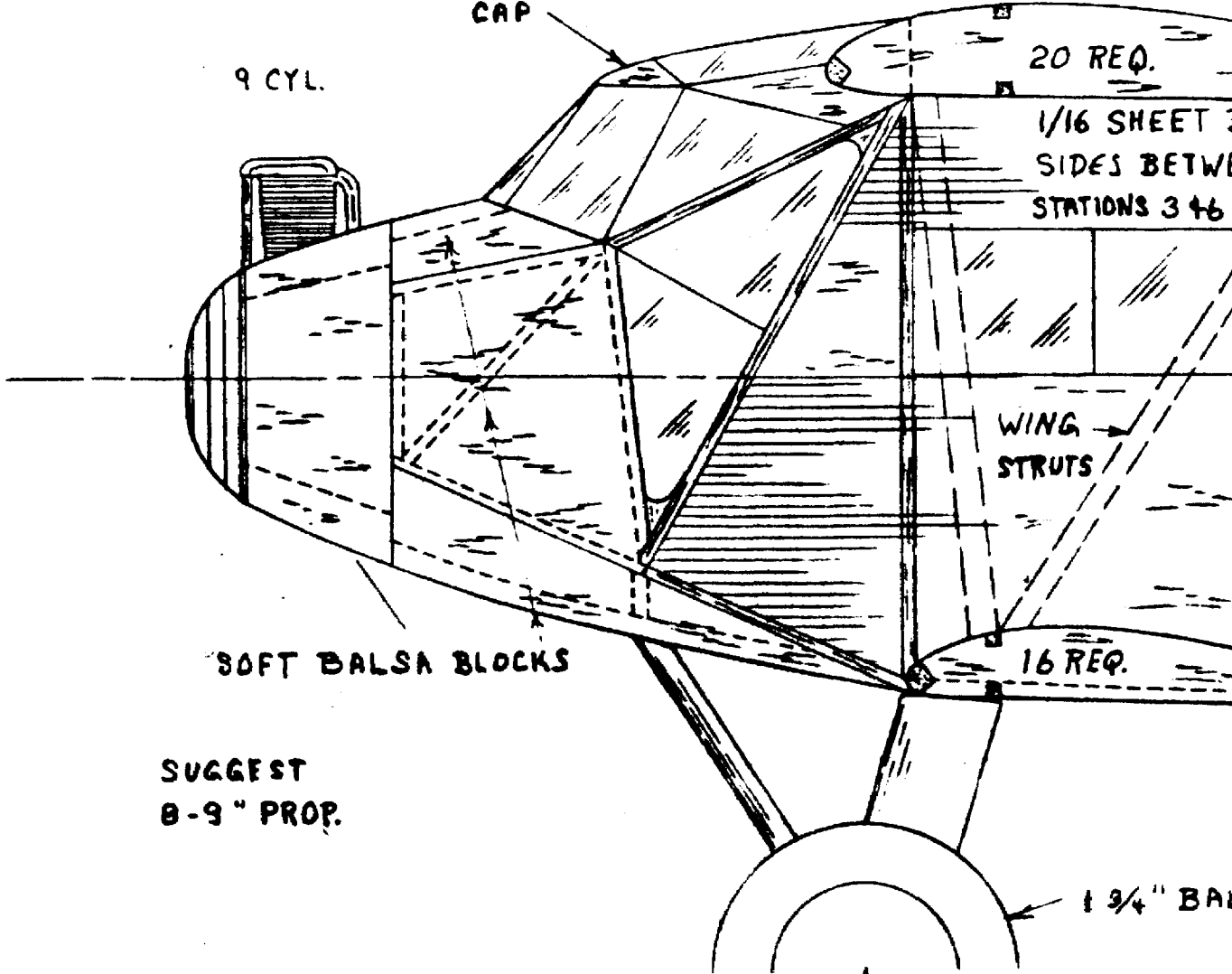
BALSA WINDSHIELD  
CAP

FUSELAGE SIDES INCL

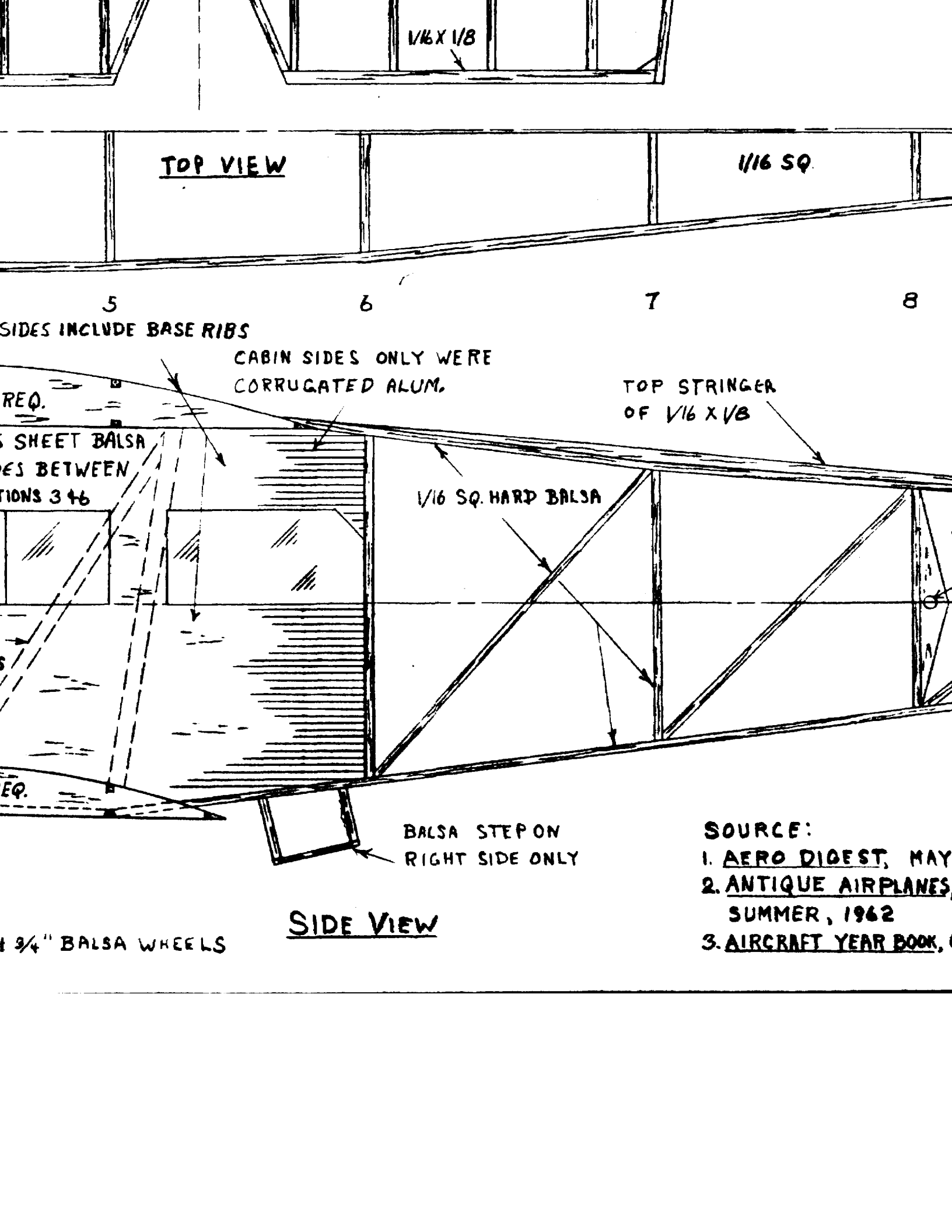
9 CYL.

20 REQ.

1/16 SHEET  
SIDES BETWEEN  
STATIONS 3 & 4



SUGGEST  
0-9" PROP.



TOP VIEW

1/16 SQ.

5

6

7

8

SIDES INCLUDE BASE RIBS

CABIN SIDES ONLY WERE  
CORRUGATED ALUM.

TOP STRINGER  
OF 1/16 X 1/8

REQ.  
SHEET Balsa  
BETWEEN  
STATIONS 3 & 6

1/16 SQ. HARD Balsa

REQ.

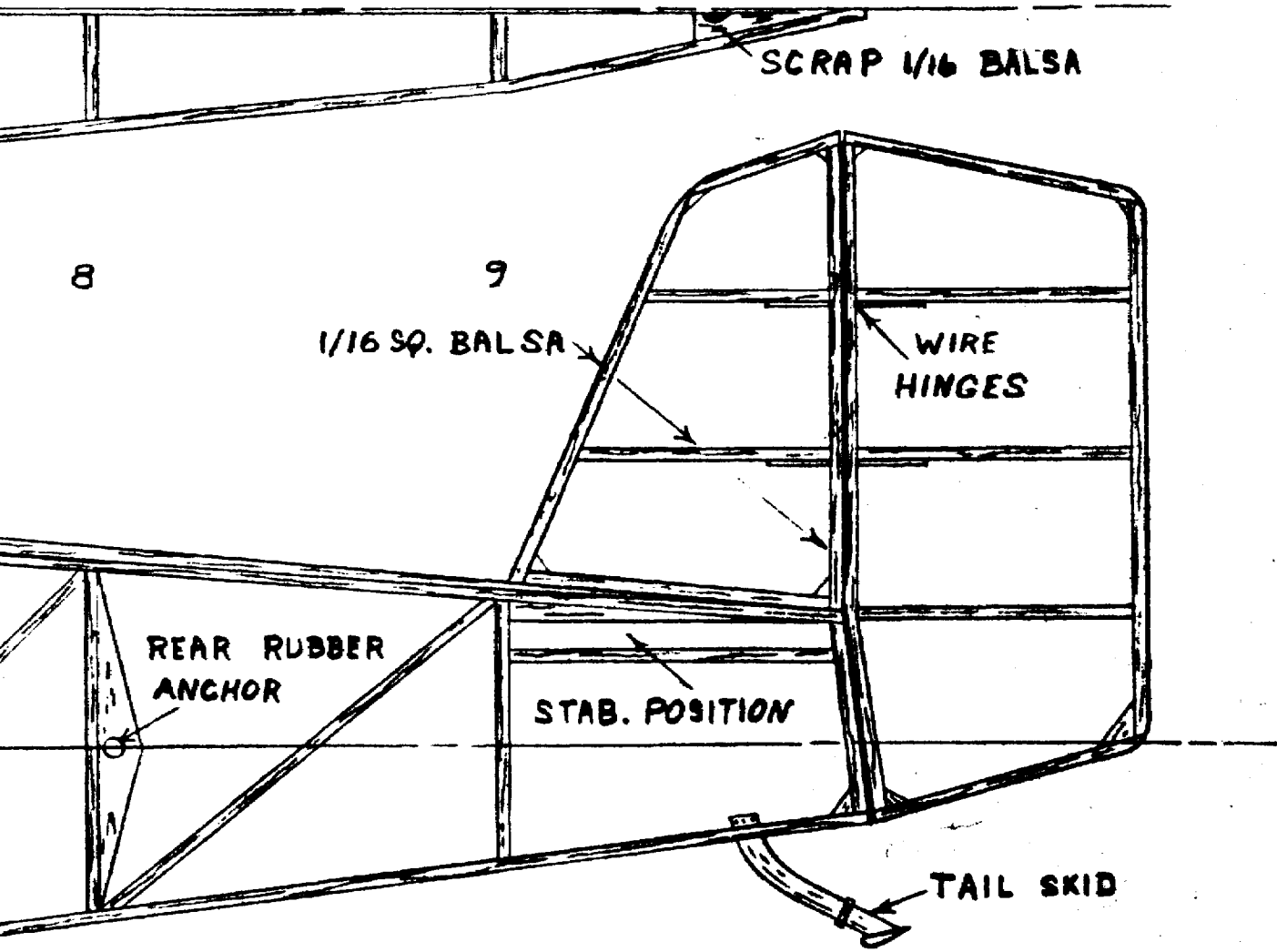
Balsa STEP ON  
RIGHT SIDE ONLY

SIDE VIEW

1/4" Balsa wheels

SOURCE:

1. AERO DIGEST, MAY
2. ANTIQUE AIRPLANES,  
SUMMER, 1962
3. AIRCRAFT YEAR BOOK,



# CUNNINGHAM - HALL

RUBBER POWER, SCALE  
27 5/4" WINGSPAN, 19 1/2" LENGTH

DESIGNED BY COL. H. G. BOWERS

SEPT. '25

ST, MAY 1929  
RPLANES,  
962  
AR BOOK, CIRCA 1929