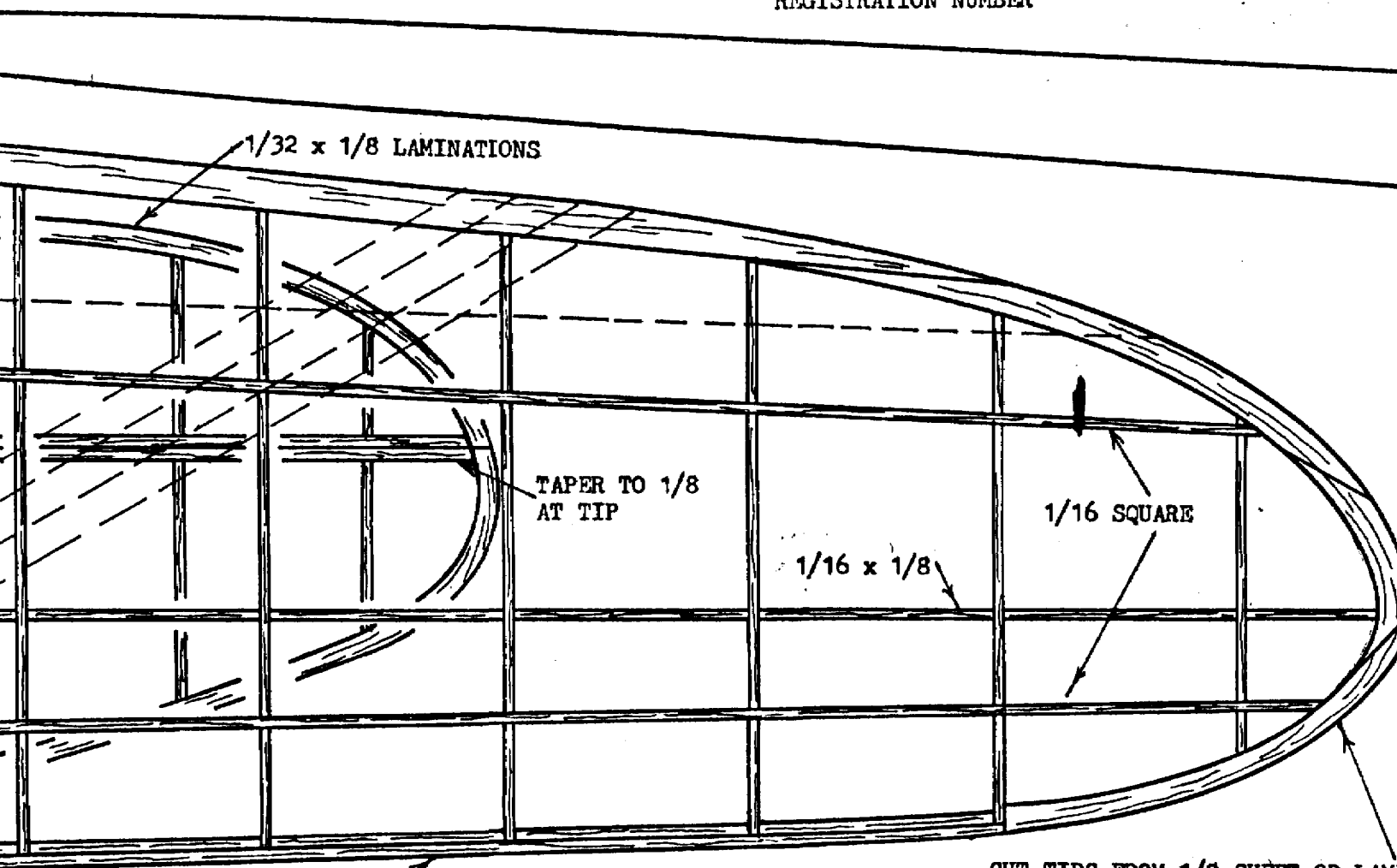


NUMERAL "9422" ON TOP OF RIGHT WING ONLY.
COLOR IS BLACK AND PRESUMED TO BE U.S.
REGISTRATION NUMBER

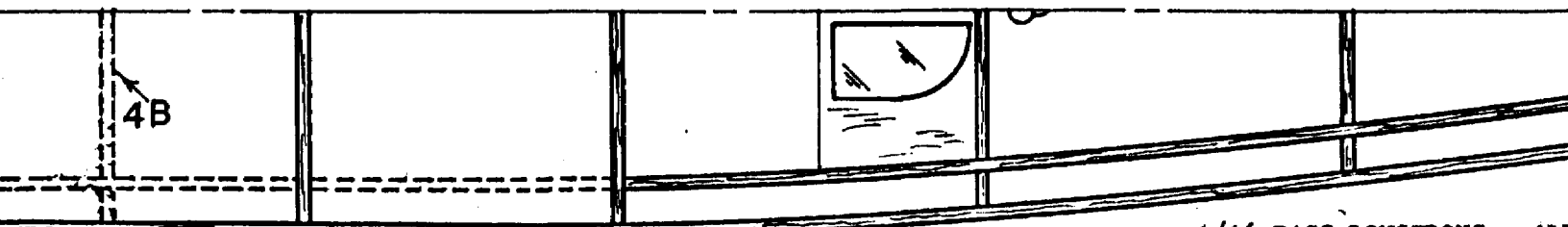


1/8 SQUARE LEADING EDGE

CUT TIPS FROM 1/8 SHEET OR LAM



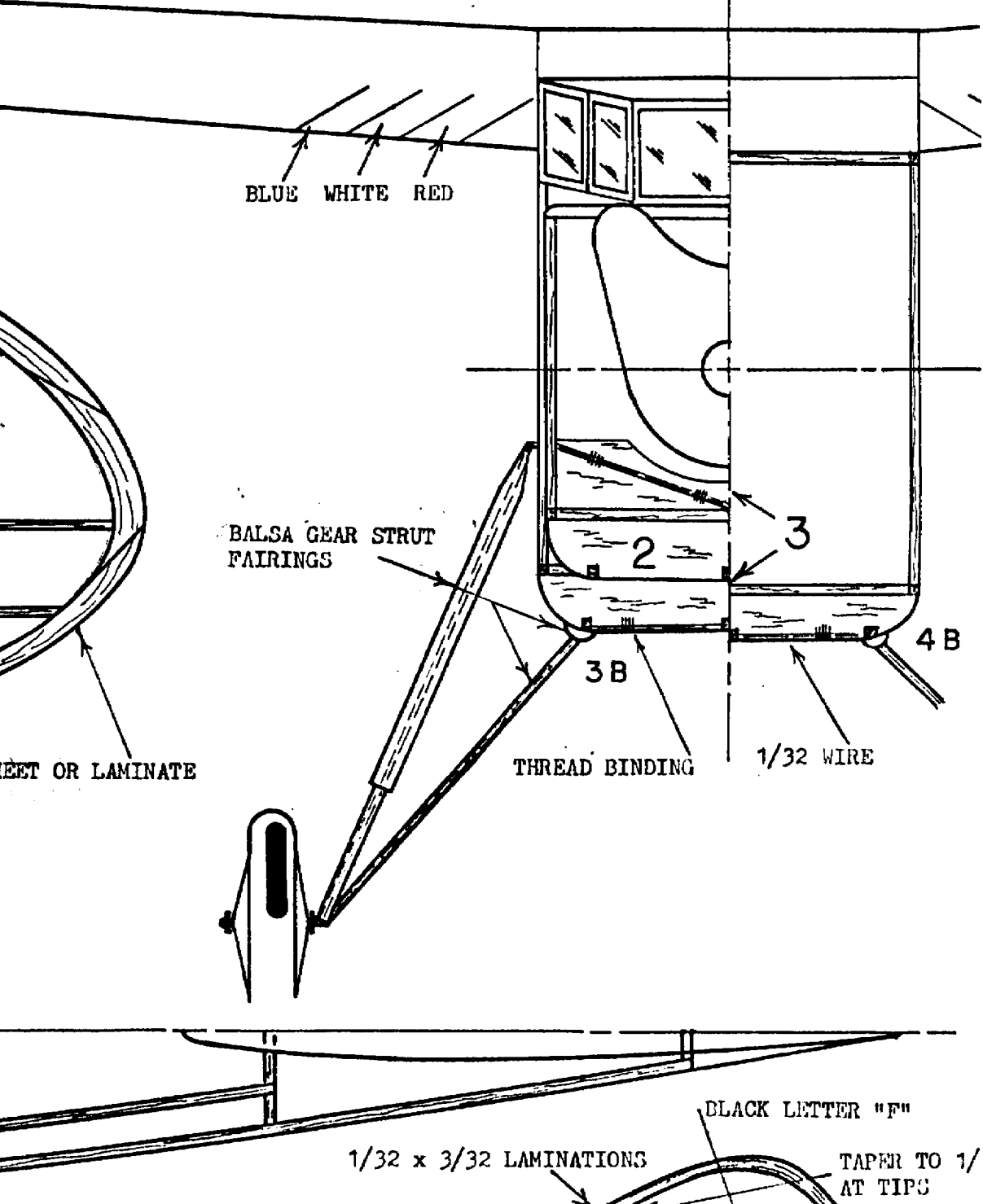
WING RIB GRADUATIONS - 1/20 SHEET

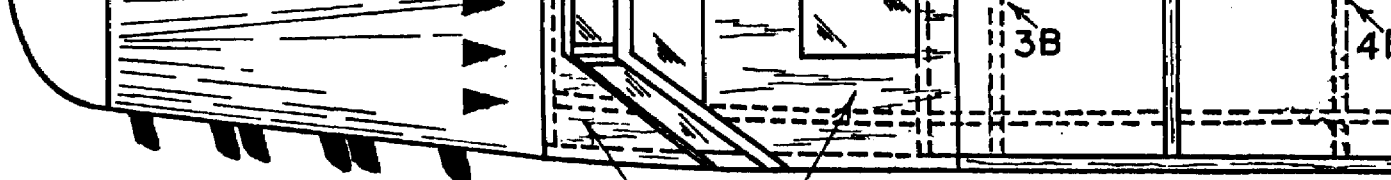


4B

ONLY.
S.

LETTERS " F-A JGP " ARE BLACK AND IS
FRENCH REGISTRATION BOTTOM OF WING ONLY,
OUTBOARD OF CHEVERONS





FLY MODEL WITH 9 INCH
PLASTIC PROP. AND APPROX.
4 STRANDS OF 3/16 RUBBER.

1/16 SHEET

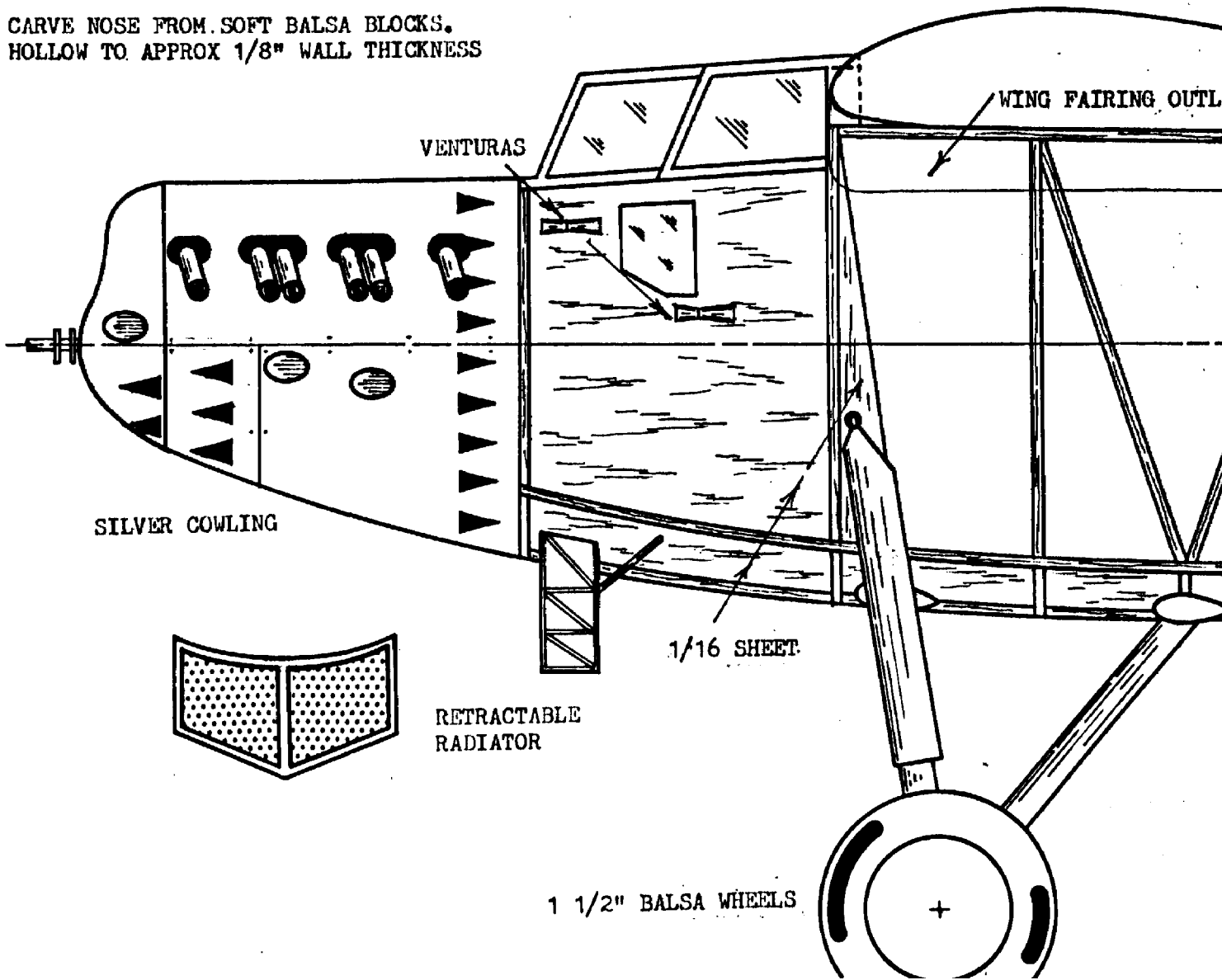
1

2

3

4

CARVE NOSE FROM SOFT BALSA BLOCKS.
HOLLOW TO APPROX 1/8" WALL THICKNESS



VENTURAS

WING FAIRING OUTL.

SILVER COWLING

1/16 SHEET

RETRACTABLE RADIATOR

1 1/2" BALSA WHEELS

4B

1/16 BASS LONGERONS - ALL
DIAGONALS, AND CROSS MEMBERS
1/16 SQUARE Balsa

5

6

7

8

WINDOW PATTERN REVERSED ON
RIGHT SIDE OF FUSELAGE

RED LETTERS

WIRING OUTLINE

BLUE WHITE RED

SUGGESTED LOCATION OF
REAR RUBBER ANCHOR PEG

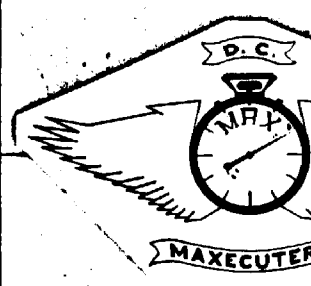
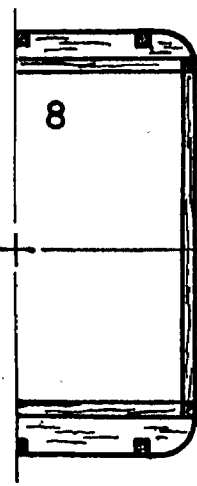
WHITE STORK
INSIGNIA

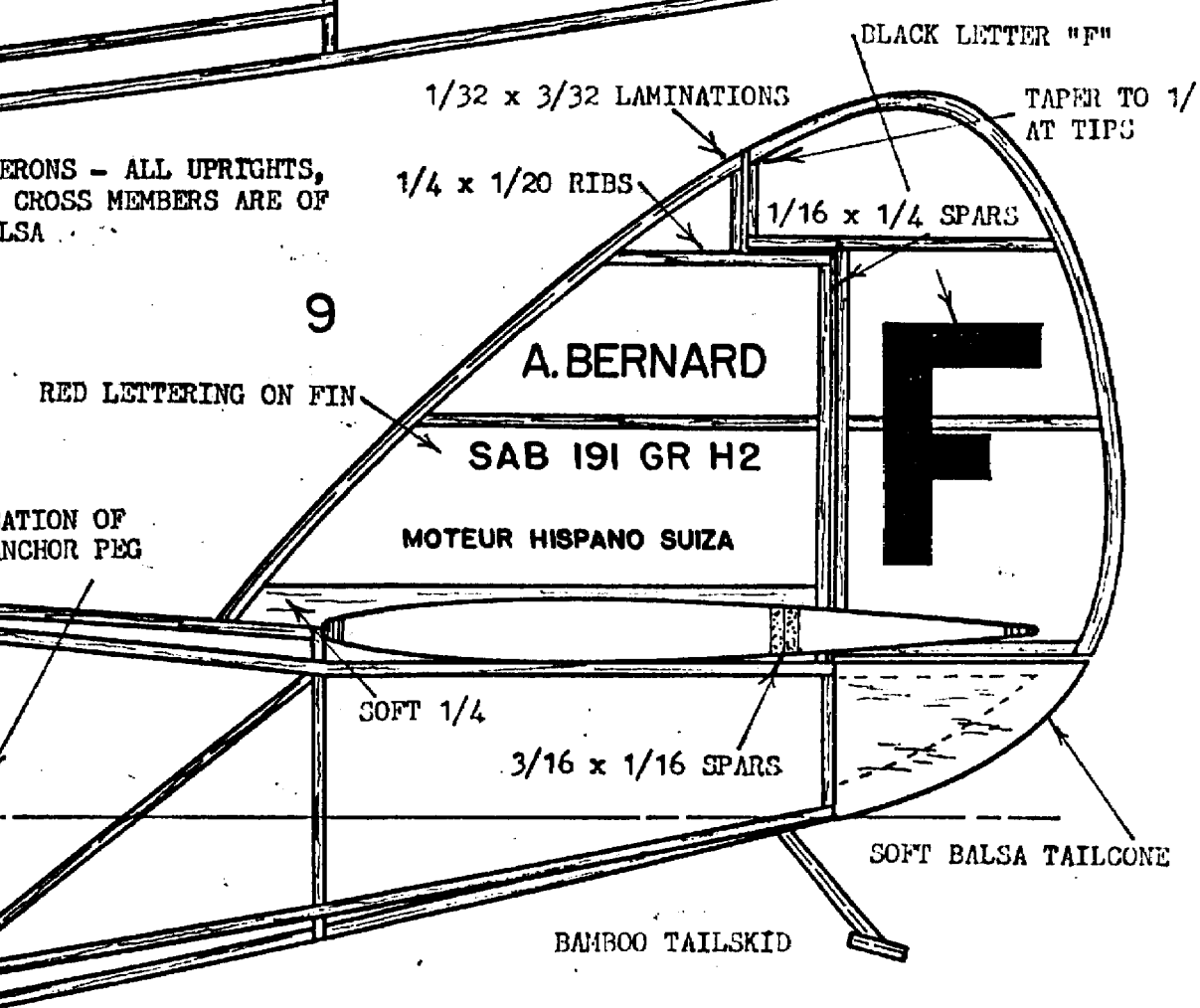
CABIN DOOR ON
LEFT SIDE ONLY

COLOR DATA: ENTIRE AIRCRAFT IS YELLOW. NOSE
COWLING IS SILVER. CHEVERONS, STORK INSIGNIA,
AND BERNARD DESIGNATION ON FIN AS INDICATED.
DETAILS ARE BLACK.

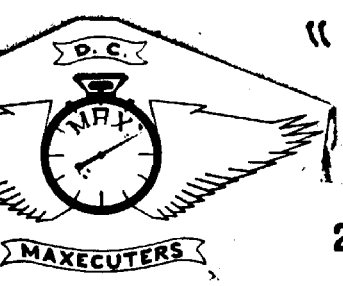
SOURCE OF DATA FOR THIS MODEL IS
ATLANTIC WINGS 1919 - 1939, by
KENNETH McDONOUGH, MODEL AERONAUTICAL
PRESS, HEMEL HEMPSTEAD: Herts, U.K.
Publication date is 1966

TYPICAL FUSELAGE





FUSELAGE CROSS SECTION



"L'OISEAU CANARI"

BERNARD 191 GR H2

28 1/2" WINGSPAN, 20 1/2" LENGTH
 BY COL. HURST BOWERS, APRIL '87
 FOR MAXFAX