

LIGHT UNDERSIDE
BOTH WINGS

1/32 SHT.

INK AILERON
OUTLINES

1/32 W x 1/16 HI
RIBS

BLUE TISSUE LETTERS (PAINTED)
PLUS UNDERSIDE ON OPPOSITE
WING. FASTEN W/SPRAYMOUNT

REINFORCE LOWER
RIB W/1/16 x 1/8 SHT.
FOR STRUT MOUNT

1/16 x 1/4 TRAILING EDGE

3/32 SQ. L.E.

REAR SPAR
1/32 x 11/32

3/32 C
TUBIN

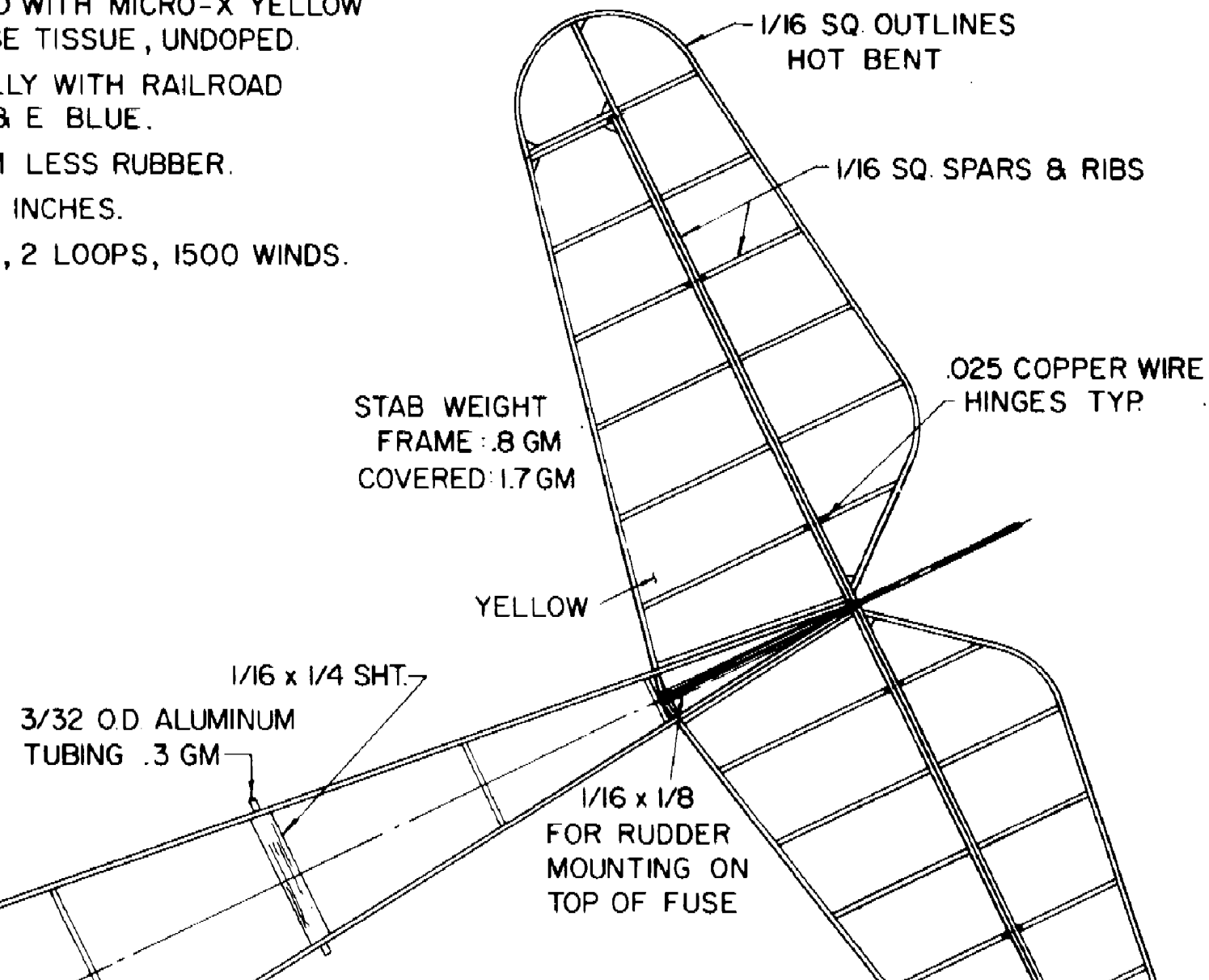
FRONT SPAR
1/32 x 3/8
& DIAGONALS

-REFERENCE DATA-

- ★ THREE VIEW: THE AIRCRAFT YEARBOOK OF THE AERONAUTICAL CHAMBER OF COMMUNICATIONS, AMERICA.
- ★ COLOR AND MARKINGS: JOPTNER LITERATURE, AIRCRAFT A.T.C. #117 3-29, THE VIEWS, SEPTEMBER 1986, PAGES 22 & 23
- ★ ENTIRE AIRFRAME COVERED WITH TRUE OLD WORLD JAPANESE TISSUE
- ★ AIRBRUSH BLUE UNDERBELLY WITH WHITE LETTERS (FLOQUIL) #151 D & E BLUE
- ★ PROTOTYPE WEIGHT: 42 GM LESS
- ★ WING AREA: 214.5 SQUARE INCHES
- ★ POWER: .145 x .042 x 36" FAI, 2 LOC

ATA-
T YEARBOOK 1929,
F COMMERCE OF

TNER US CIVIL
THE VINTAGE AIRPLANE,
2 & 23 PLUS COVER.
D WITH MICRO-X YELLOW
E TISSUE, UNDOPED.
LY WITH RAILROAD
& E BLUE.
I LESS RUBBER.
INCHES.
, 2 LOOPS, 1500 WINDS.



FRONT SPAR
1/32 x 3/8
& DIAGONALS

1/16 SHT.
BALSA
HOT BEND
ON GALLON
JUG

1/8 DIA.
BIRCH
DOWEL

1/8 ID x 5/32 x 1 3/4 LG
ALUMINUM TUBING

WRAP LEAD BALLAST
AS REQ'D.

1/16 BRASS TUBING
BEARING 1 1/4 LG.

PROP. SHAFT .032 MUSIC WIRE

1/32 PLYWOOD

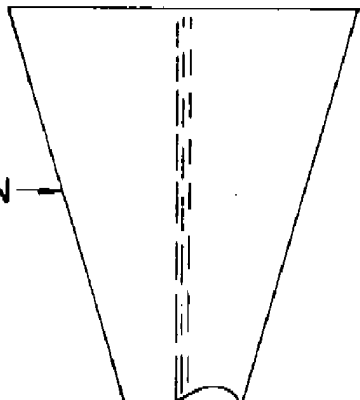
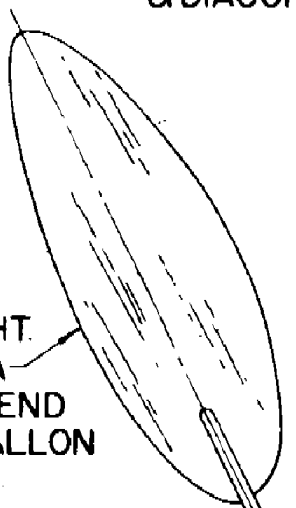
1/2 SHT
BALSA

BLUE FOAM

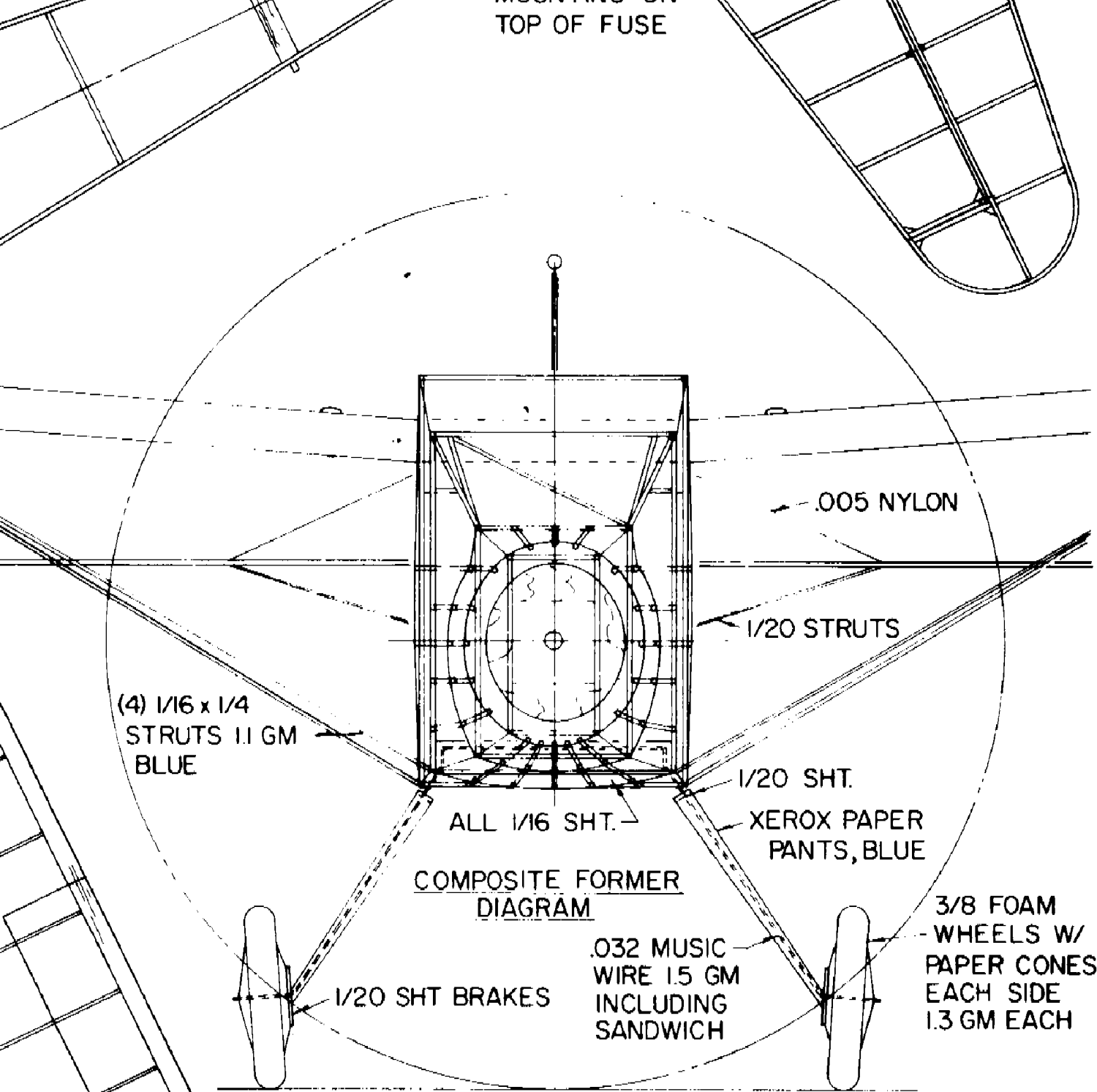
3/16 DIA. x 1/8 LG.
NYLON SPACER

PAPER LEG PATTERN

WING WEIGHTS:
5.7 GM FRAME
9.3 GM COVERED



MEASURING ON
TOP OF FUSE



.005 NYLON

1/20 STRUTS

(4) 1/16 x 1/4
STRUTS 1.1 GM
BLUE

1/20 SHT.

ALL 1/16 SHT.

XEROX PAPER
PANTS, BLUE

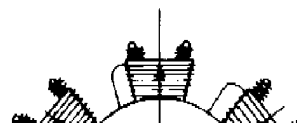
COMPOSITE FORMER
DIAGRAM

.032 MUSIC
WIRE 1.5 GM
INCLUDING
SANDWICH

3/8 FOAM
WHEELS W/
PAPER CONES
EACH SIDE
1.3 GM EACH

1/20 SHT BRAKES

SEVEN CYLINDER



PROP & NOSE BLOCK ASSY
WEIGHT: 7.1 GM

WINGS
YELLOW

11" DIA. ADJUSTABLE PITCH PROP
PAINT SILVER

MAHAGONY INSTRUMENT PANEL

1° INCIDENCE



1/16 SHT

.005 THK.
ACETATE

CORK CYLINDERS
PEN SPRGS
1/16 ALUM
TUBE

9%

3 1/2"
DOWN
THRUST

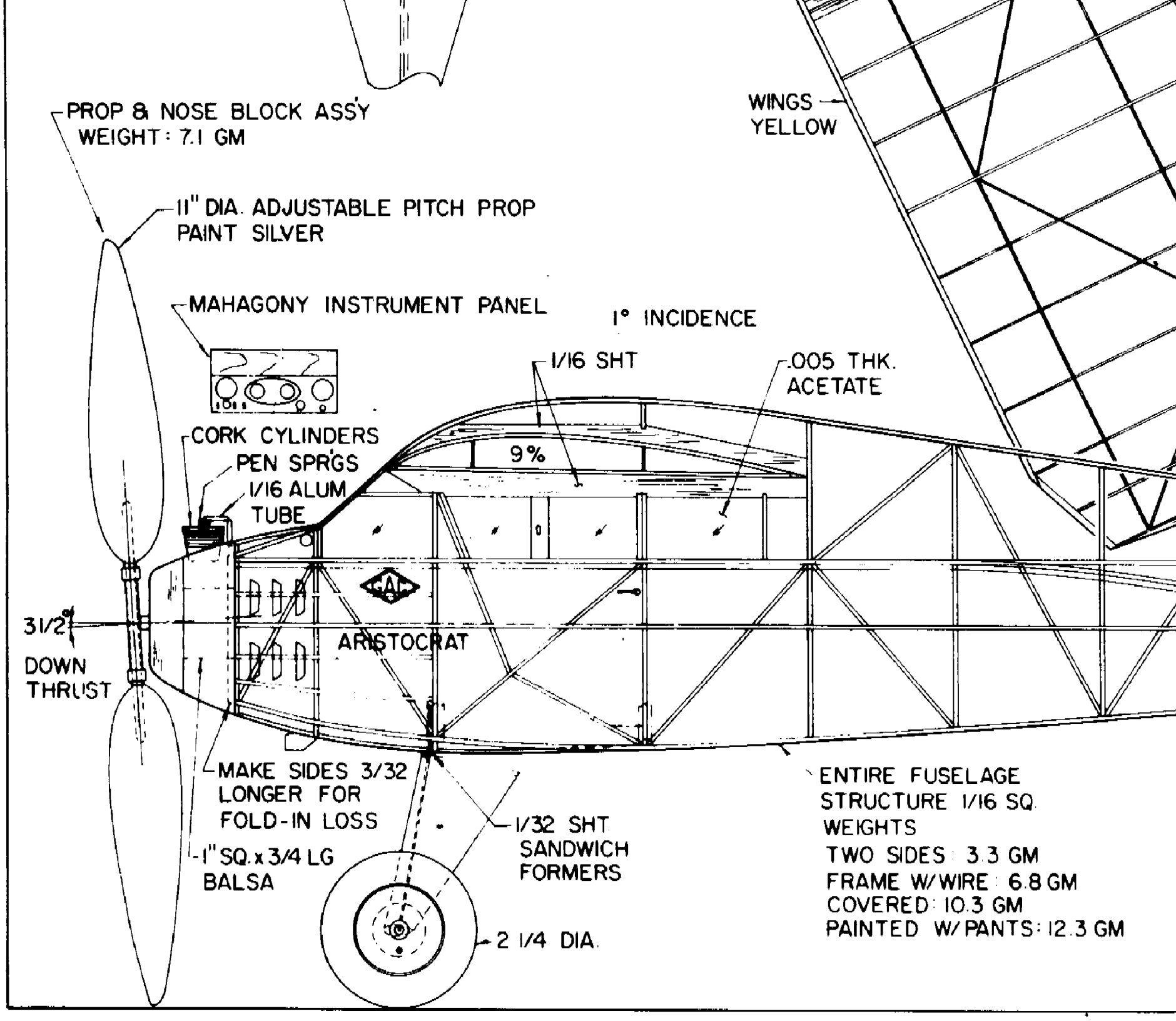
ARISTOCRAT

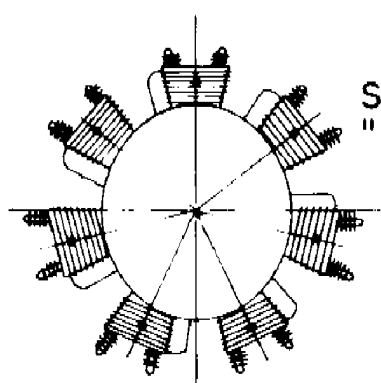
MAKE SIDES 3/32
LONGER FOR
FOLD-IN LOSS
-1" SQ. x 3/4 LG
BALSA

1/32 SHT
SANDWICH
FORMERS

ENTIRE FUSELAGE
STRUCTURE 1/16 SQ.
WEIGHTS
TWO SIDES: 3.3 GM
FRAME W/WIRE: 6.8 GM
COVERED: 10.3 GM
PAINTED W/PANTS: 12.3 GM

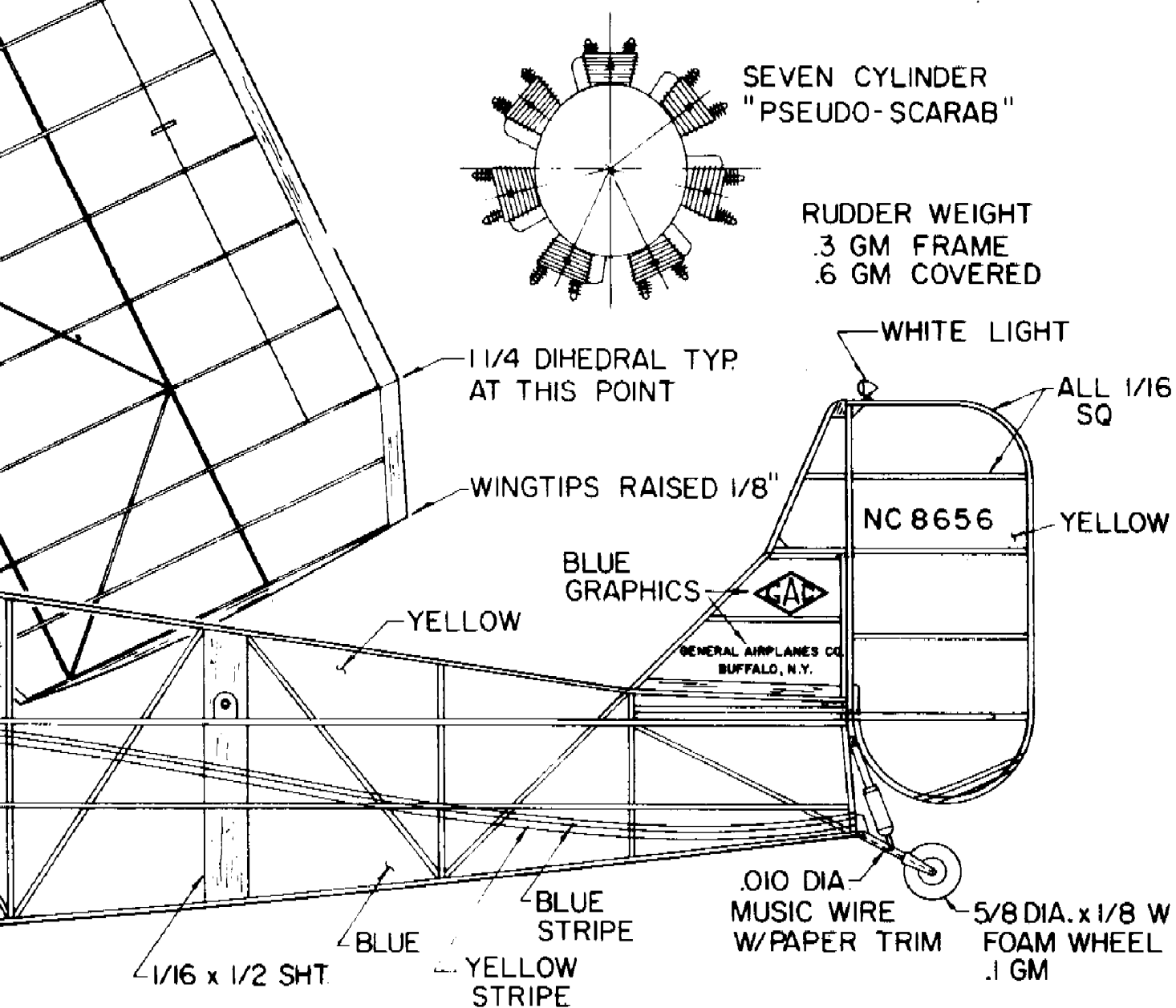
2 1/4 DIA.





SEVEN CYLINDER
"PSEUDO-SCARAB"

RUDDER WEIGHT
.3 GM FRAME
.6 GM COVERED



SHRINK TISSUE ON
FUSELAGE ONLY

GENERAL AIRPLANES CORP.
"ARISTOCRAT"
FOR FAC COCONUT SCALE
BY DAVE REES - SEPT 88