

STAB PLAN

$\frac{1}{4}$ " x $\frac{1}{2}$ " Balsa
TAPER TO $\frac{1}{4}$ "

$\frac{1}{8}$ " SQ.
BALSA T.E.

$\frac{1}{8}$ " BALSA
SHEET

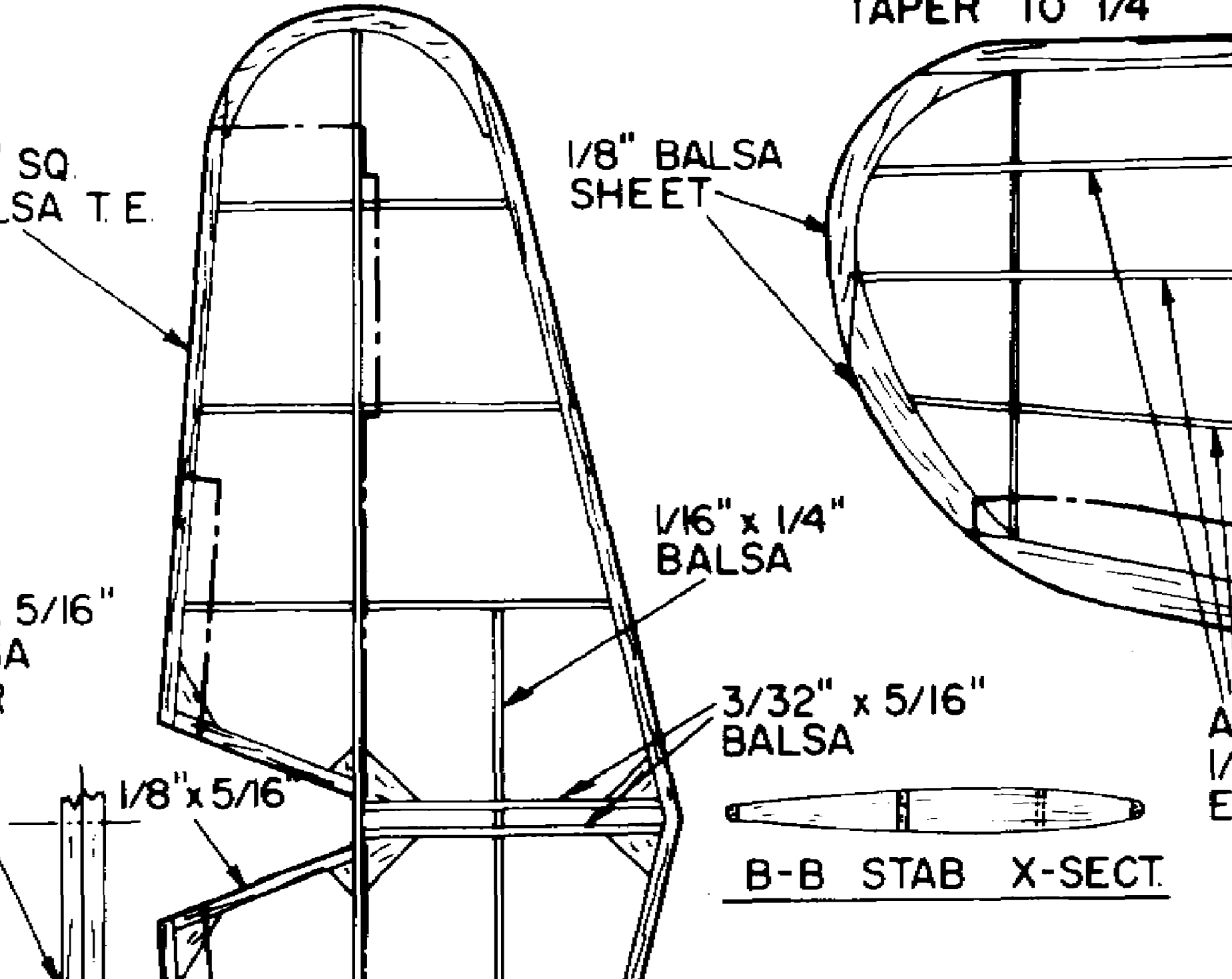
$\frac{1}{16}$ " x $\frac{5}{16}$ "
BALSA
SPAR

$\frac{1}{16}$ " x $\frac{1}{4}$ "
BALSA

$\frac{3}{32}$ " x $\frac{5}{16}$ "
BALSA

$\frac{1}{8}$ " x $\frac{5}{16}$ "

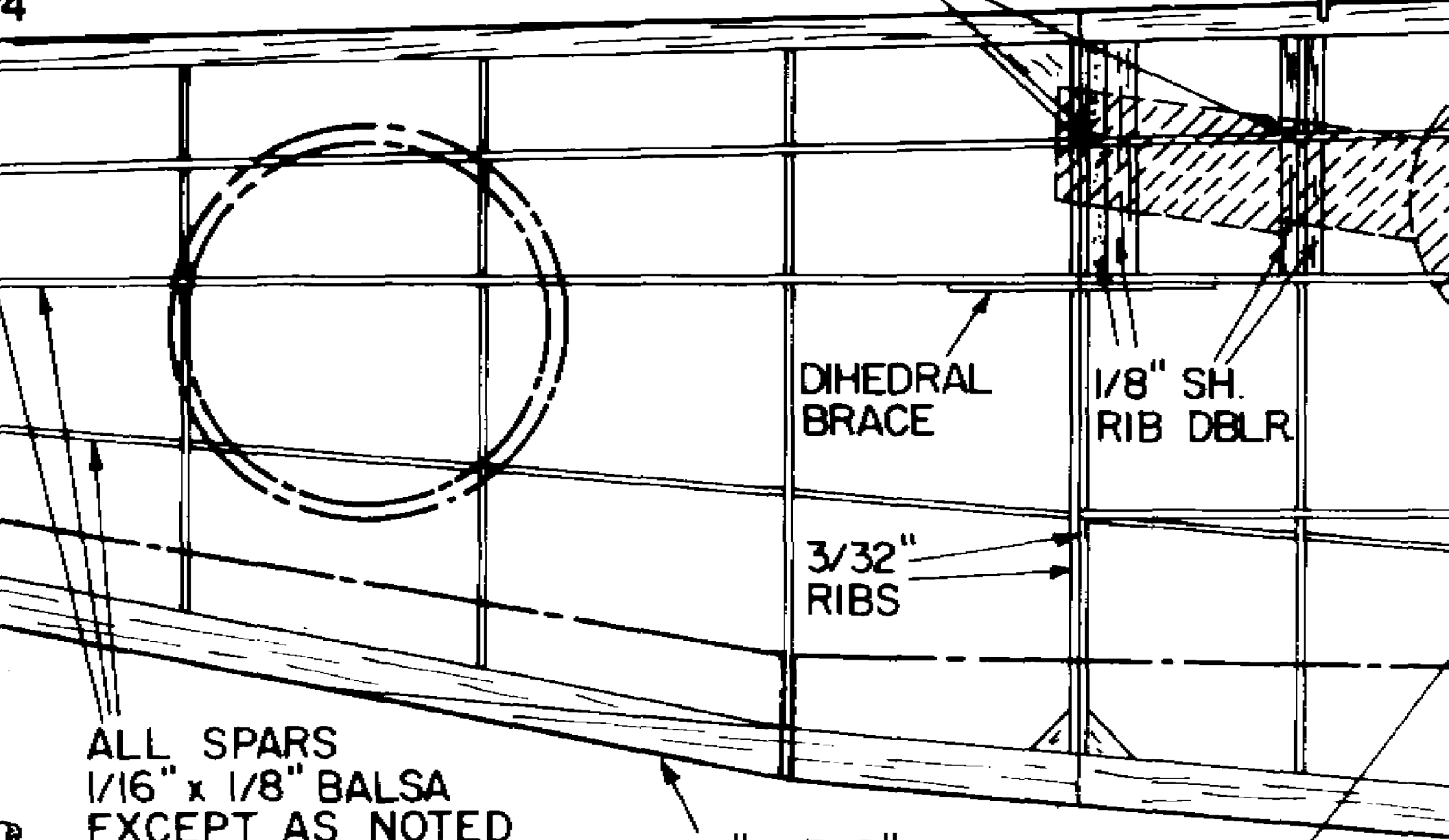
B-B STAB X-SECT.



BALSAS L. E.
4"

1/16" I. D. TUBE

WHEEL



DIHEDRAL
BRACE

1/8" SH.
RIB DBLR.

3/32"
RIBS

ALL SPARS
1/16" x 1/8" BALSAS
EXCEPT AS NOTED

1/8" x 3/8"
BALSAS T. E.

EXTEND SPAR 1/2"
BOT. 1/16" x 3/16" H

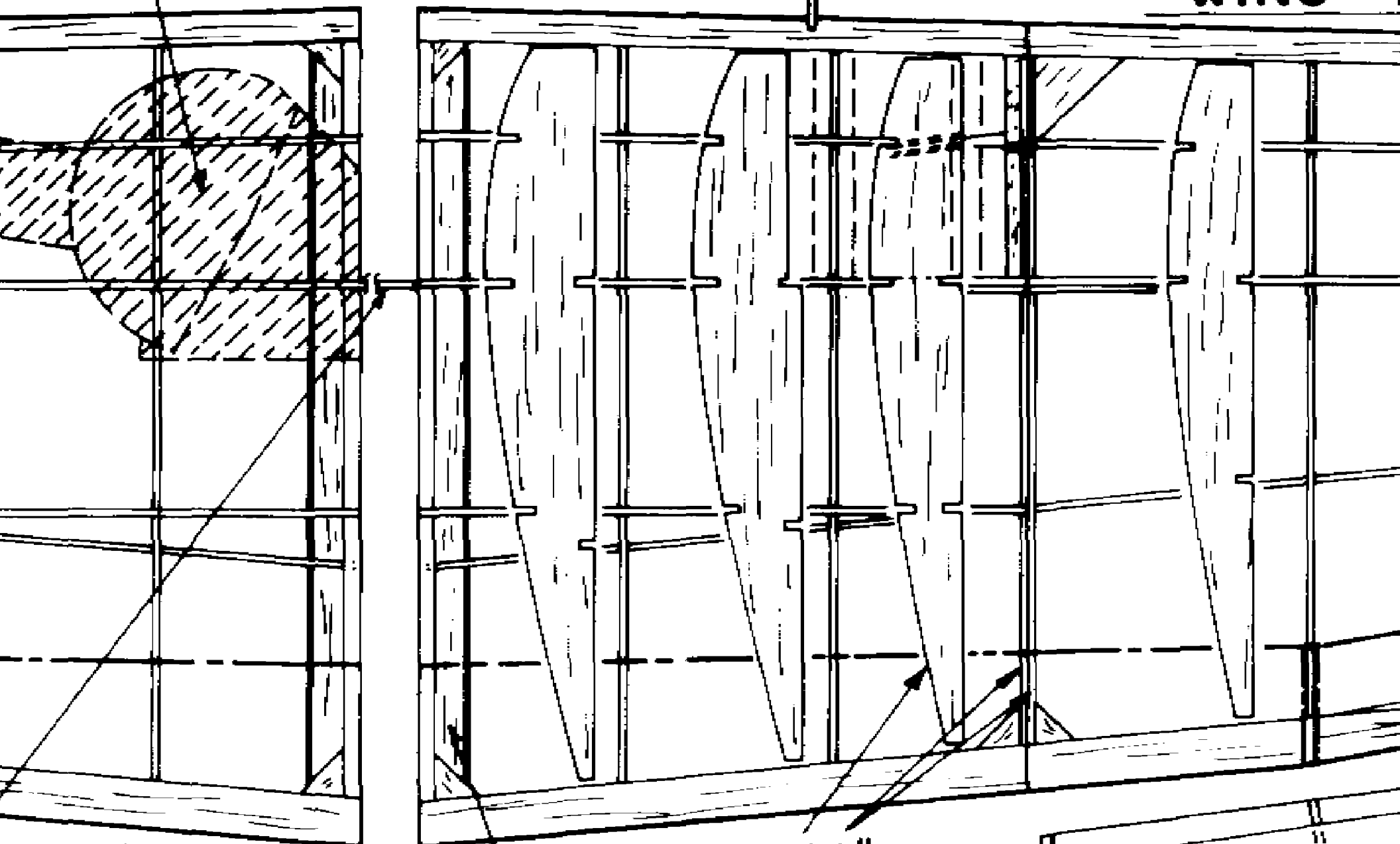
1/16" BALSAS

CT.

WHEEL WELL

20 M.M.

WING



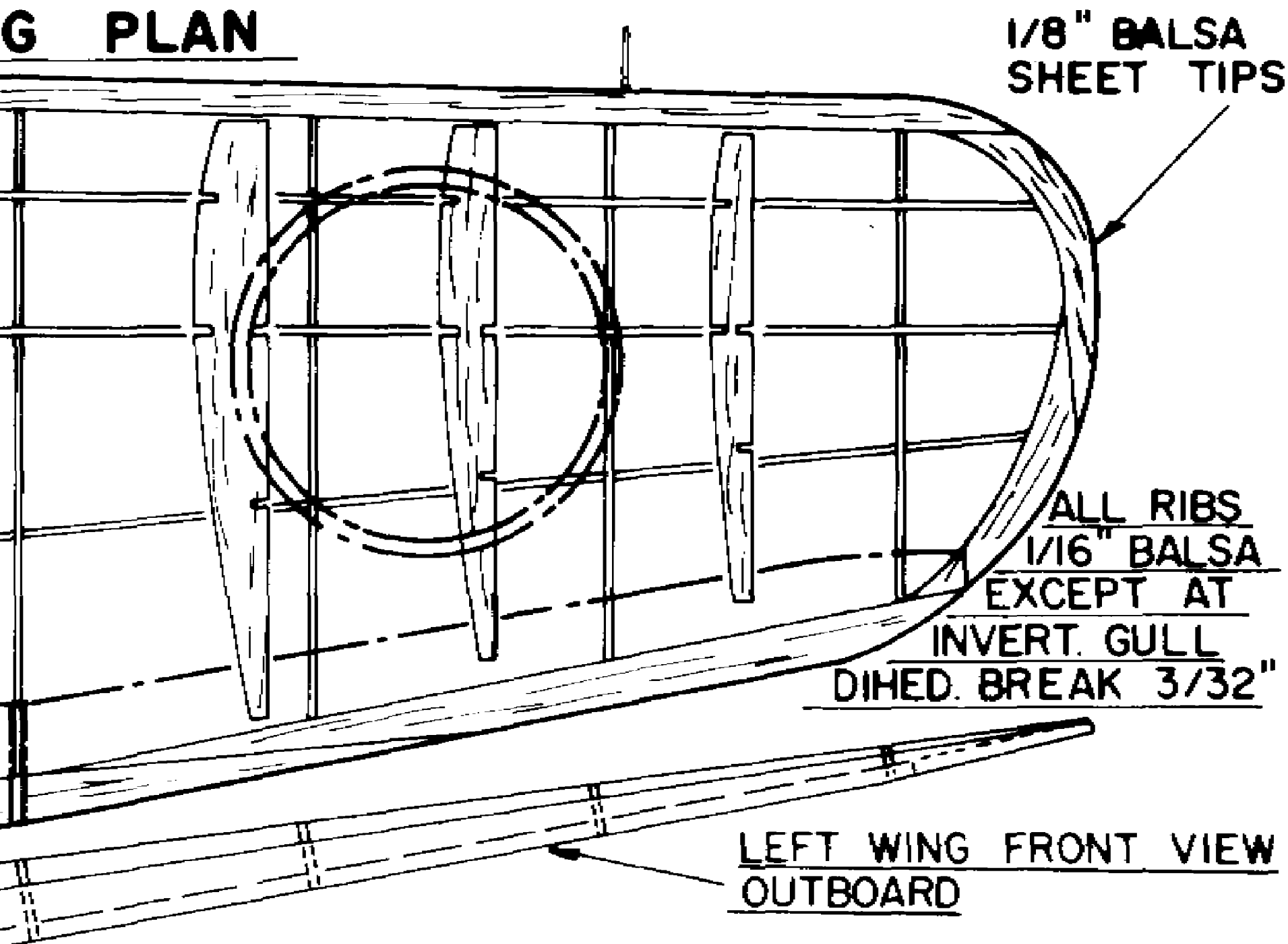
R 1/2" TOP & 1/16" HARD Balsa

1/16" x 1/4" BOTTOM

3/32" RIB

(2) 1/32" x 3/32"

G PLAN



1/8" Balsa
Sheet Tips

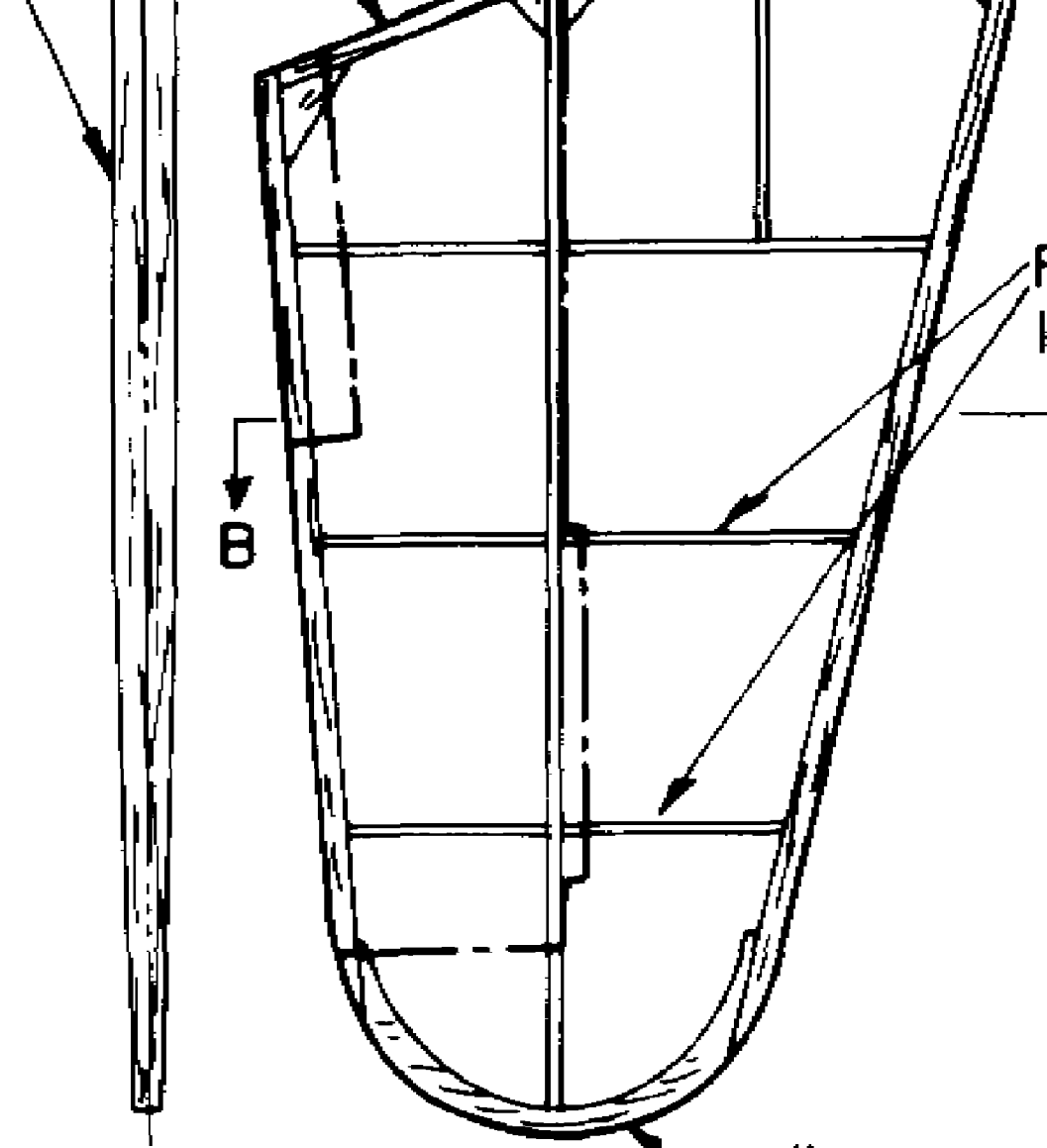
ALL RIBS
1/16" Balsa
EXCEPT AT
INVERT. GULL
DIHED. BREAK 3/32"

LEFT WING FRONT VIEW
OUTBOARD

ALL STRINGERS
ARE 1/16" x 1/8"

LEFT WING
INBOARD

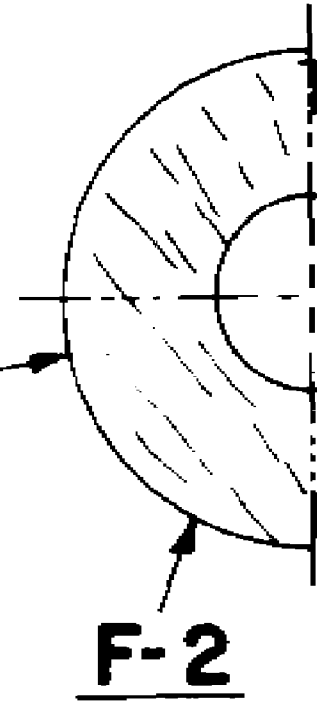
B-B STAB X-SECT.



RIBS ARE FROM
1/16" x 5/16" BALSALSA

3/32"
BALSALSA
SHEET

1/8" BALSALSA
SHEET



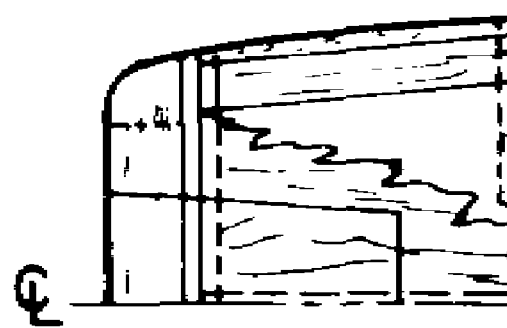
F-2



F-12 (2) REQ.



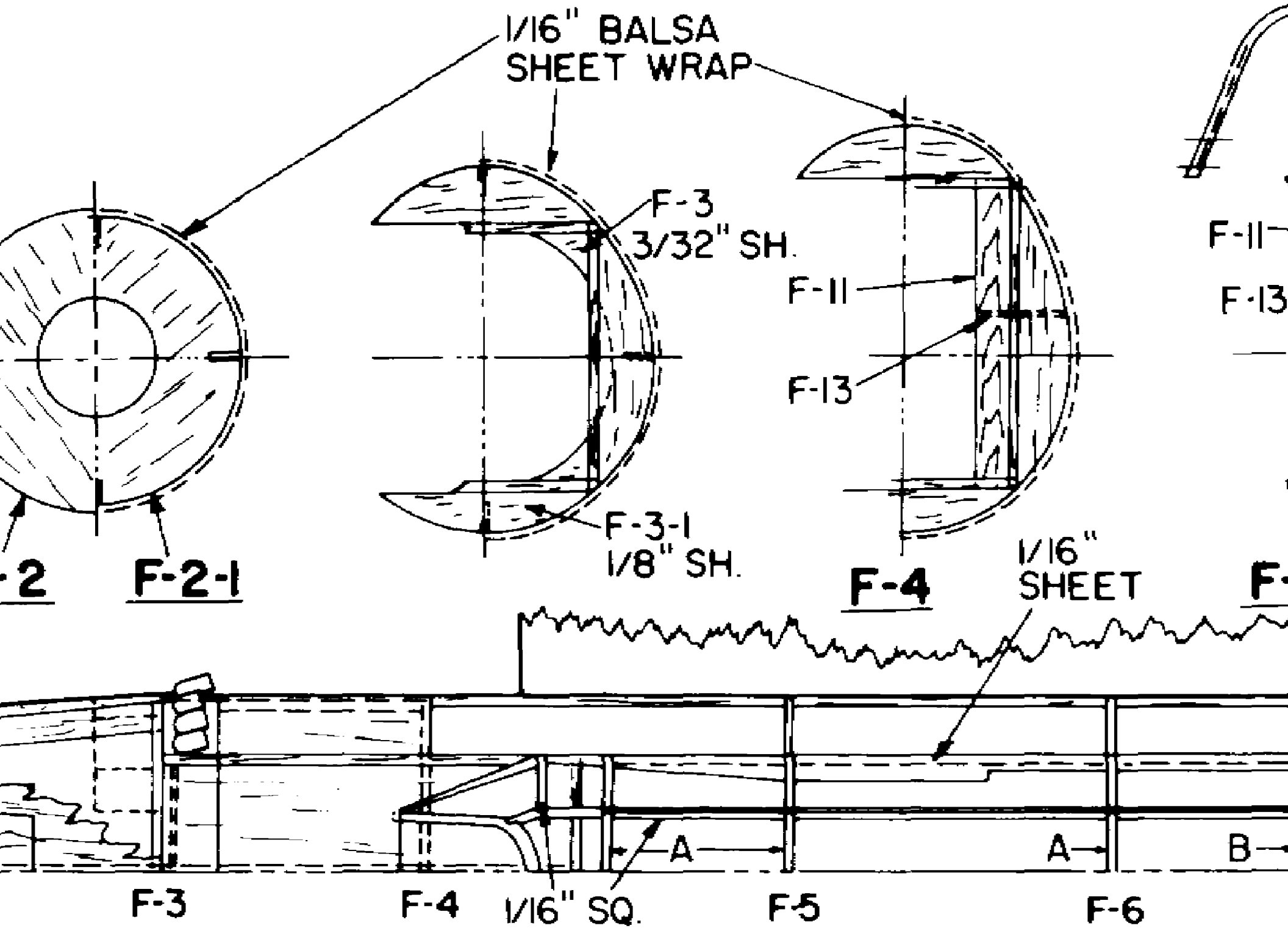
F-11 (8) REQ.



F-1

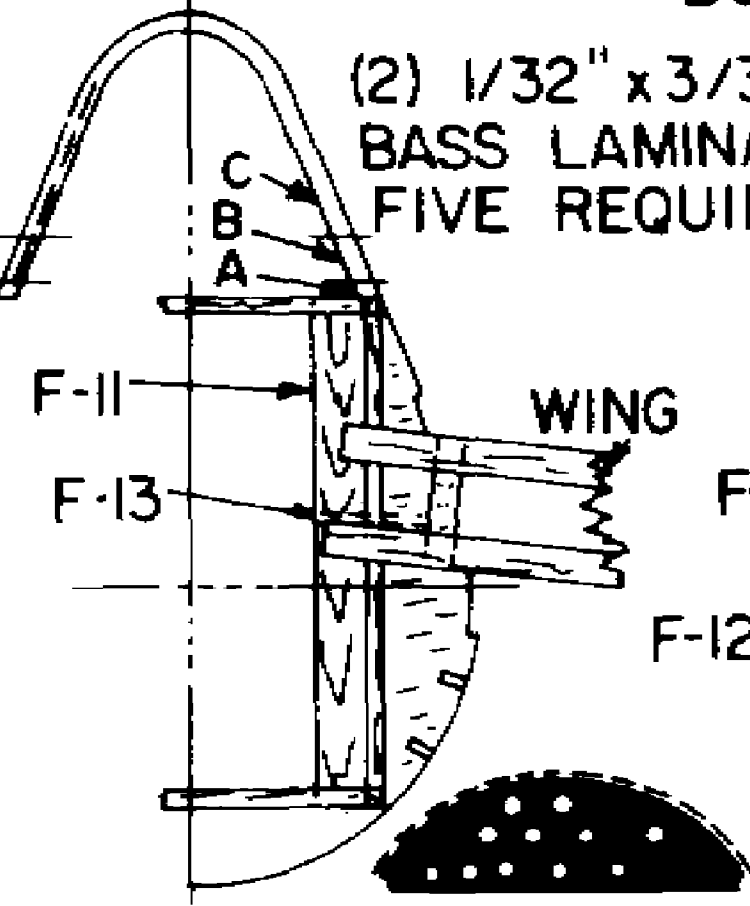
BALSA T. L.

BOT. 1/16" x 3/16" H

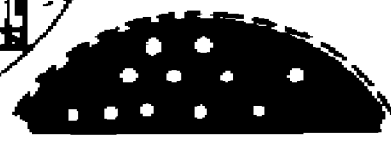


1/16" HARD BALSAM BOTTOM

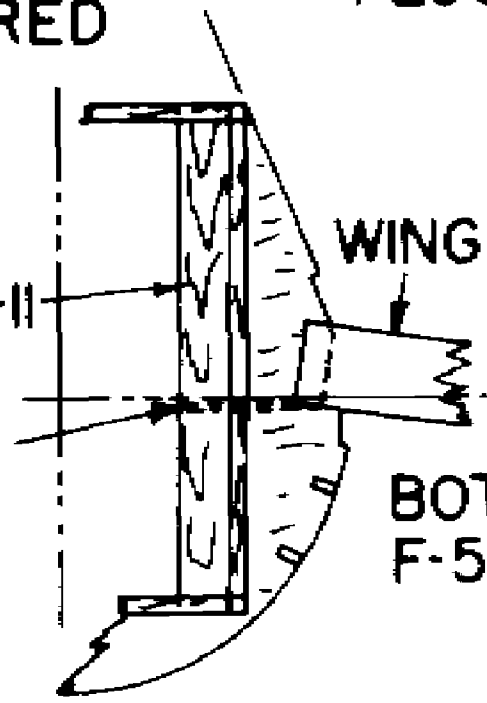
(2) 1/32" x 3/32" BASS LAMINATION FIVE REQUIRED



F-5

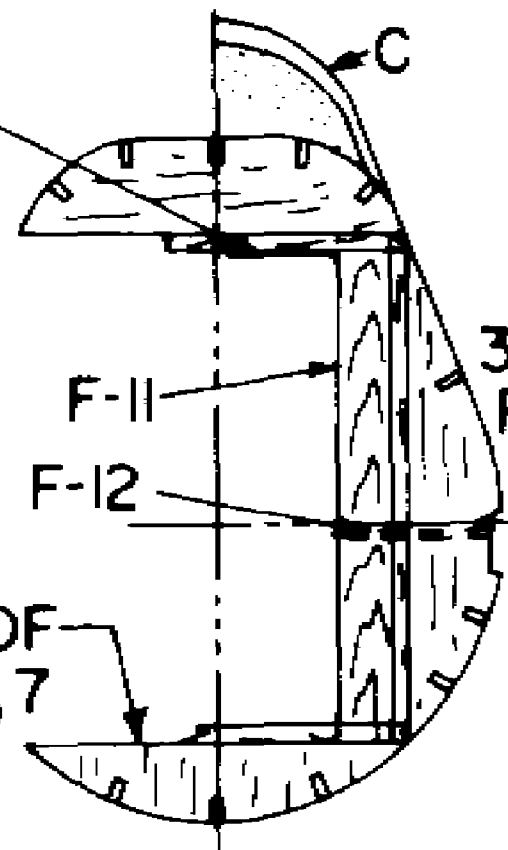


DASH



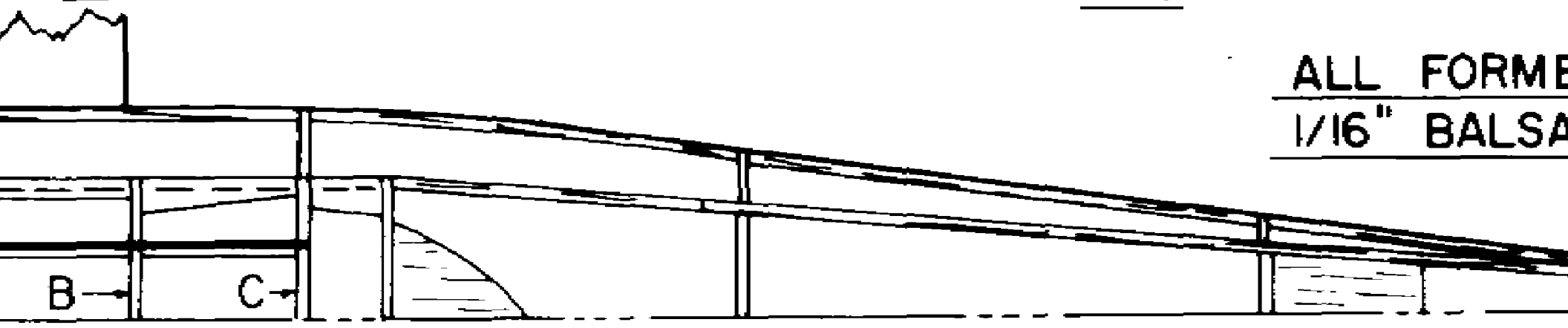
F-6

CARD FLOOR



F-7

ALL FORMER 1/16" BALSAM

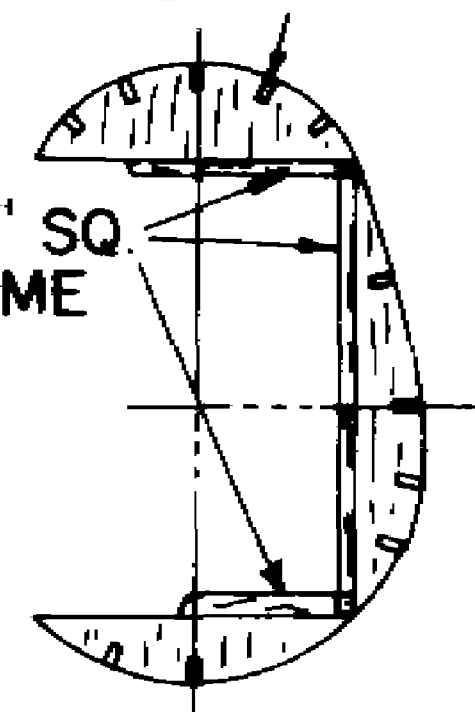


F-7

F-8

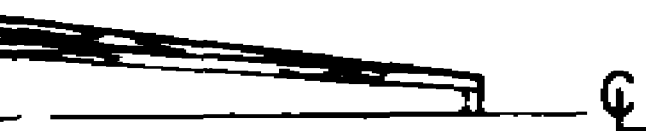
F-9

ALL STRINGERS
ARE 1/16" x 1/8"
BALSA



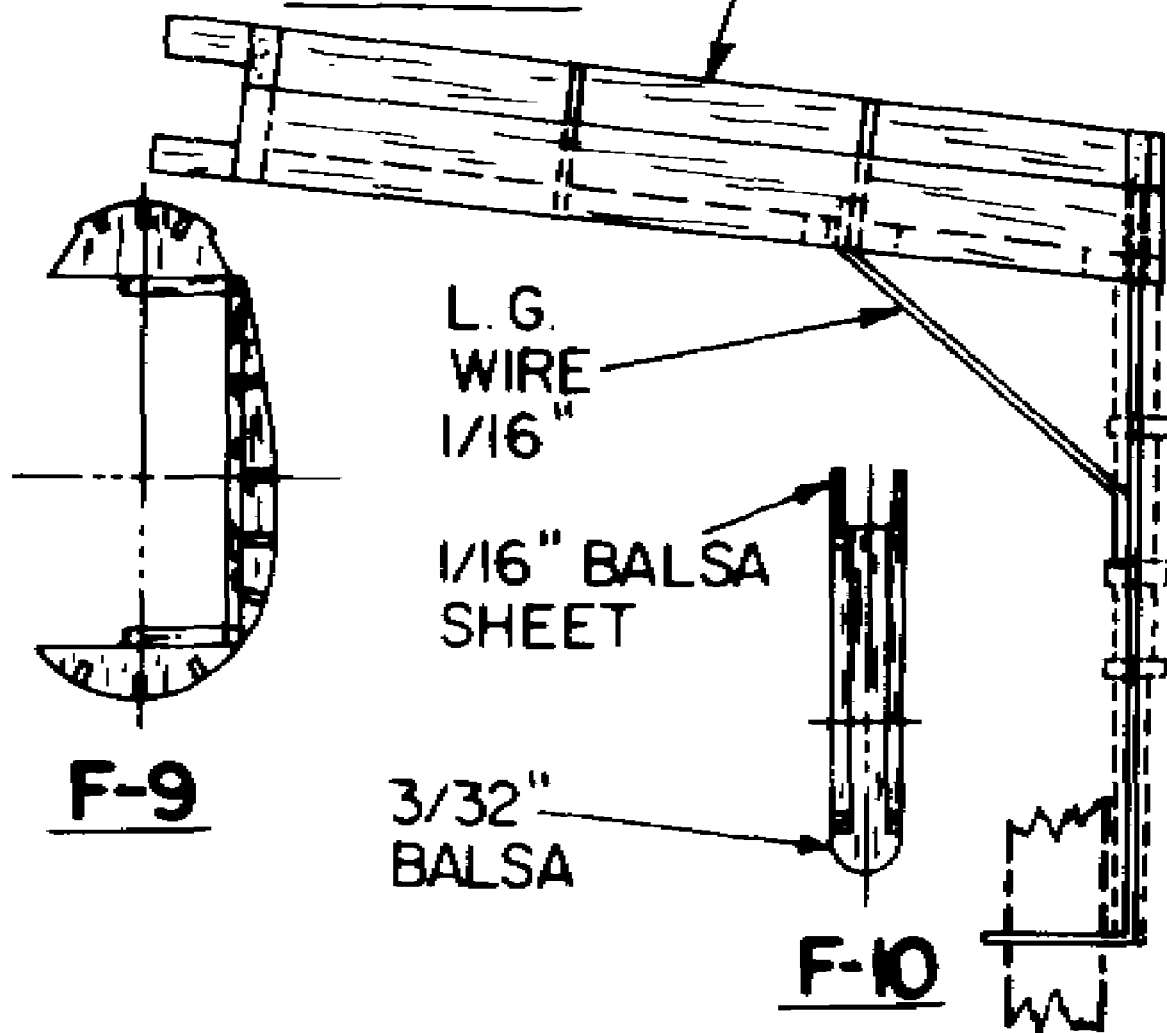
F-8

FORMERS ARE
BALSA SHEET



F-10

LEFT WING
INBOARD



F-9

F-10

1/16" BALSA
(4 REQ'D)

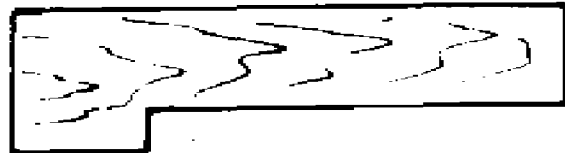


DIHEDRAL BRACE

F-12 (2) REQ.

F-11 (8) REQ.

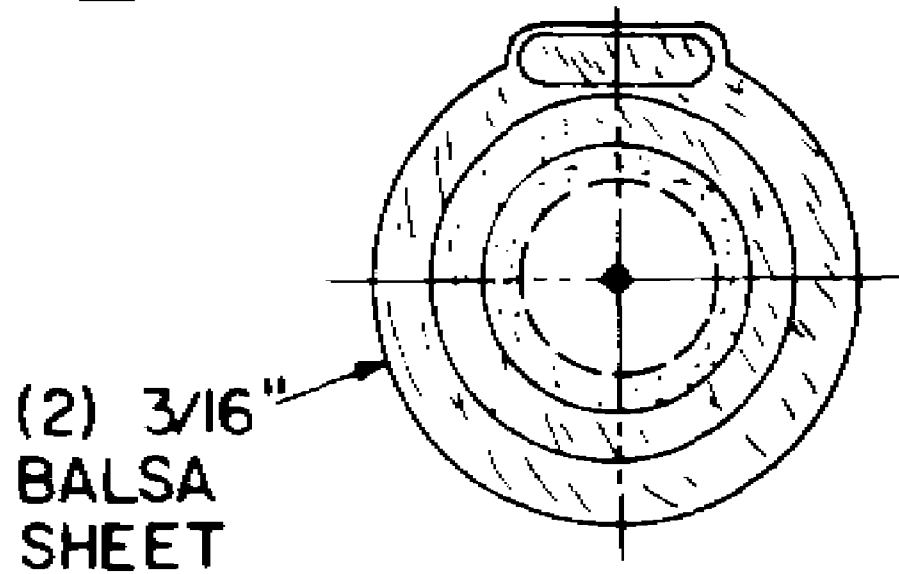
F-1



F-13 (2) REQ.

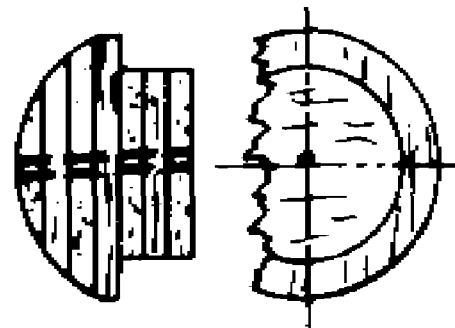
F-11, 12 & 13
FROM 1/32" BASS

EXHAUST
3/16" TU



(2) 3/16"
BALSA
SHEET

F-1



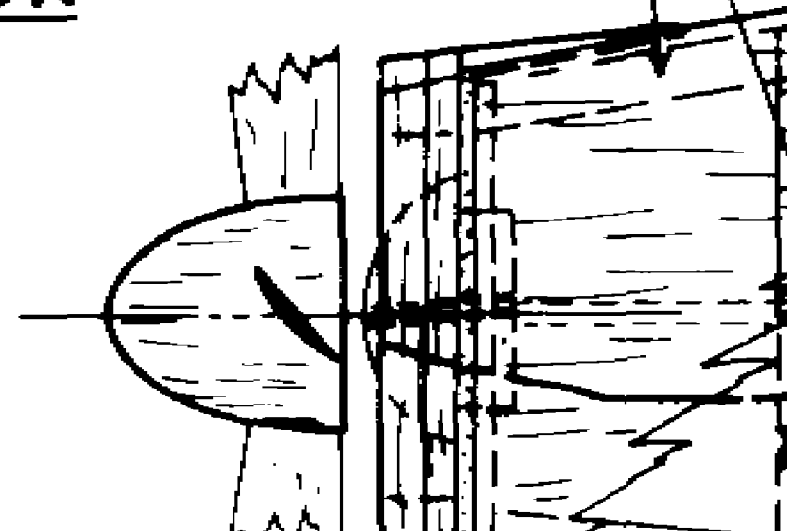
NOSE
BLOCK

3/32" x 1/4"
4 PIECES

NOTES

PROP - 12" DIA

MOTOR - 4 C STRANDS 1/4"



F-3

F-4

1/16" SQ.

F-5

F-6

CANOPY IS FORMED FROM .005 - .008 CELLULOID GLUED OVER CANOPY FRAME

FUSELAGE PLAN

EXHAUST PORTS
1/8" TUBE

1/32" PLY

CARD STOCK FLOOR

1/16" Balsa SHEET

1/4" ES

1/16" SH

F-11

F-11

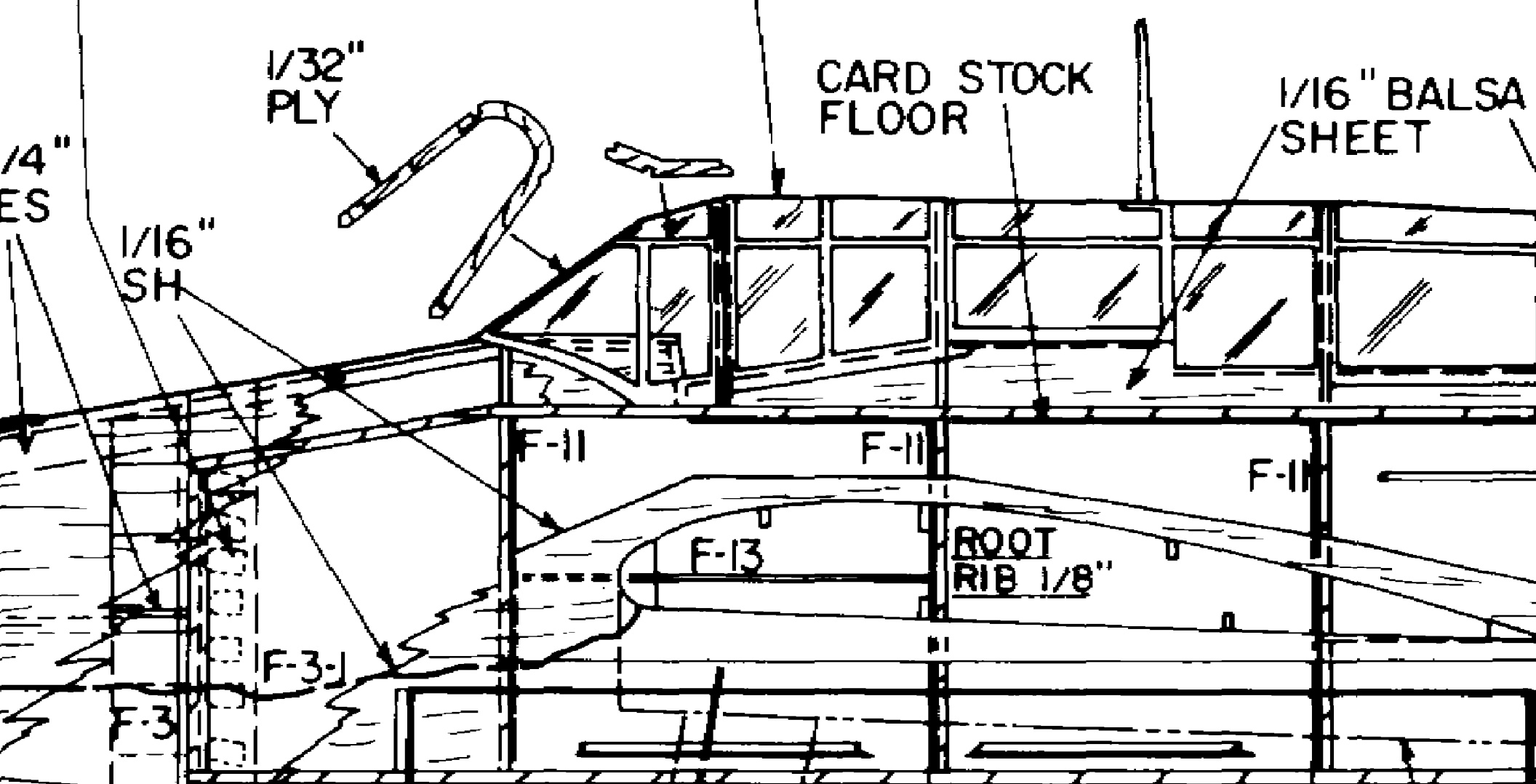
F-11

F-13

ROOT RIB 1/8"

F-3-J

F-3

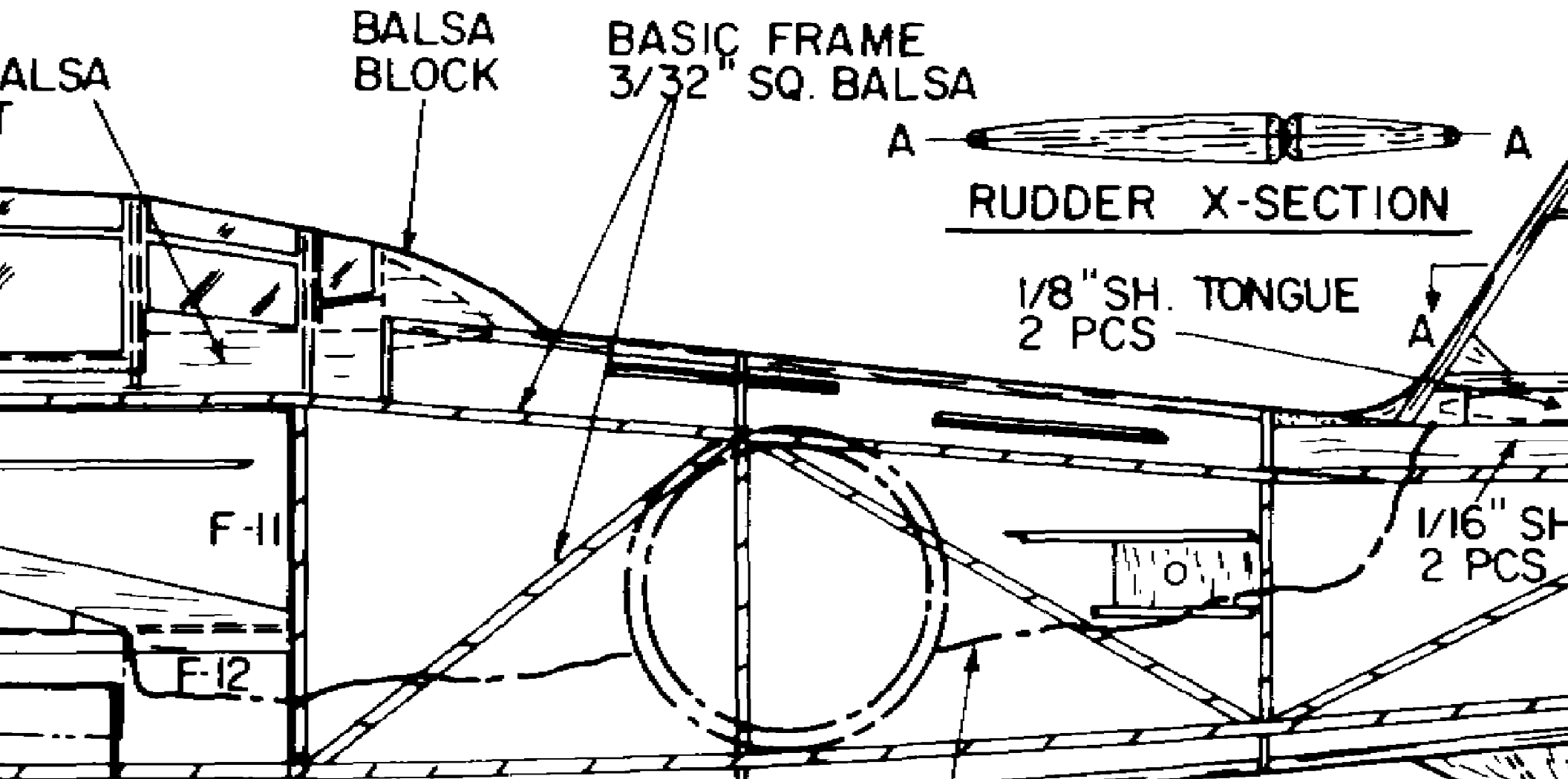


F-7

F-8

F-9

COLOR NOTE: DARK GREEN UPPER SURFACES - LIGHT GREY LOWER SURFACES - BLACK COWL & ANTI-GLARE.



F-10

DIHEDRAL BRACE

1/8" Balsa
Sheet

1/8" SQ.
Balsa

1/16" Balsa
Ribs

3/32" x 5/16"
Balsa

R-1

R-2

1/8" x 5/16"
Balsa

1/4" Balsa

R-2

5/16"
Balsa

F-10

1/16" SHT
PCS

A

A

Q

R-1



PROP - 12" DIA

MOTOR - 4-6 STRANDS 1/4"
F.A.I. RUBBER

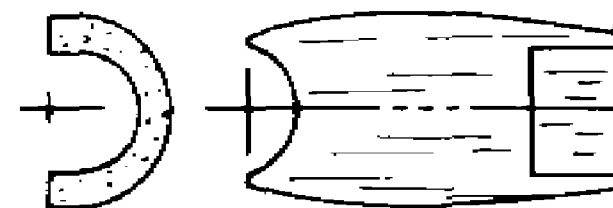
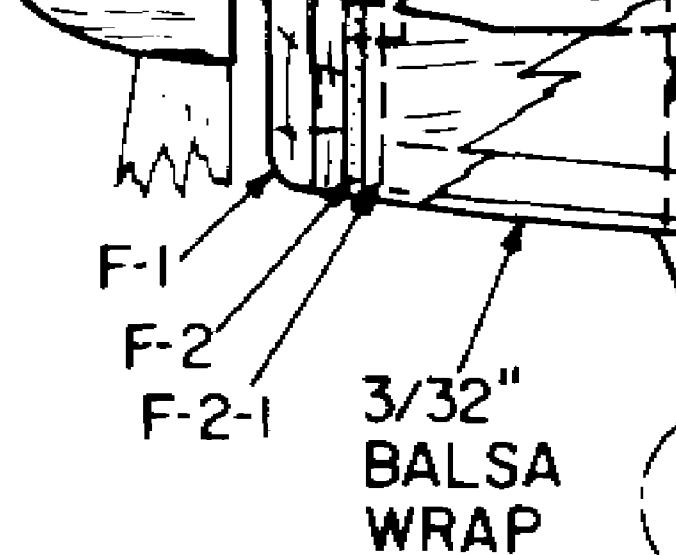
SEMI-SCALE - 4 BLADE PROP
10-1/2" DIA.

WHEELS DOWN S/UP REQUIRES
LESS DOWN THRUST

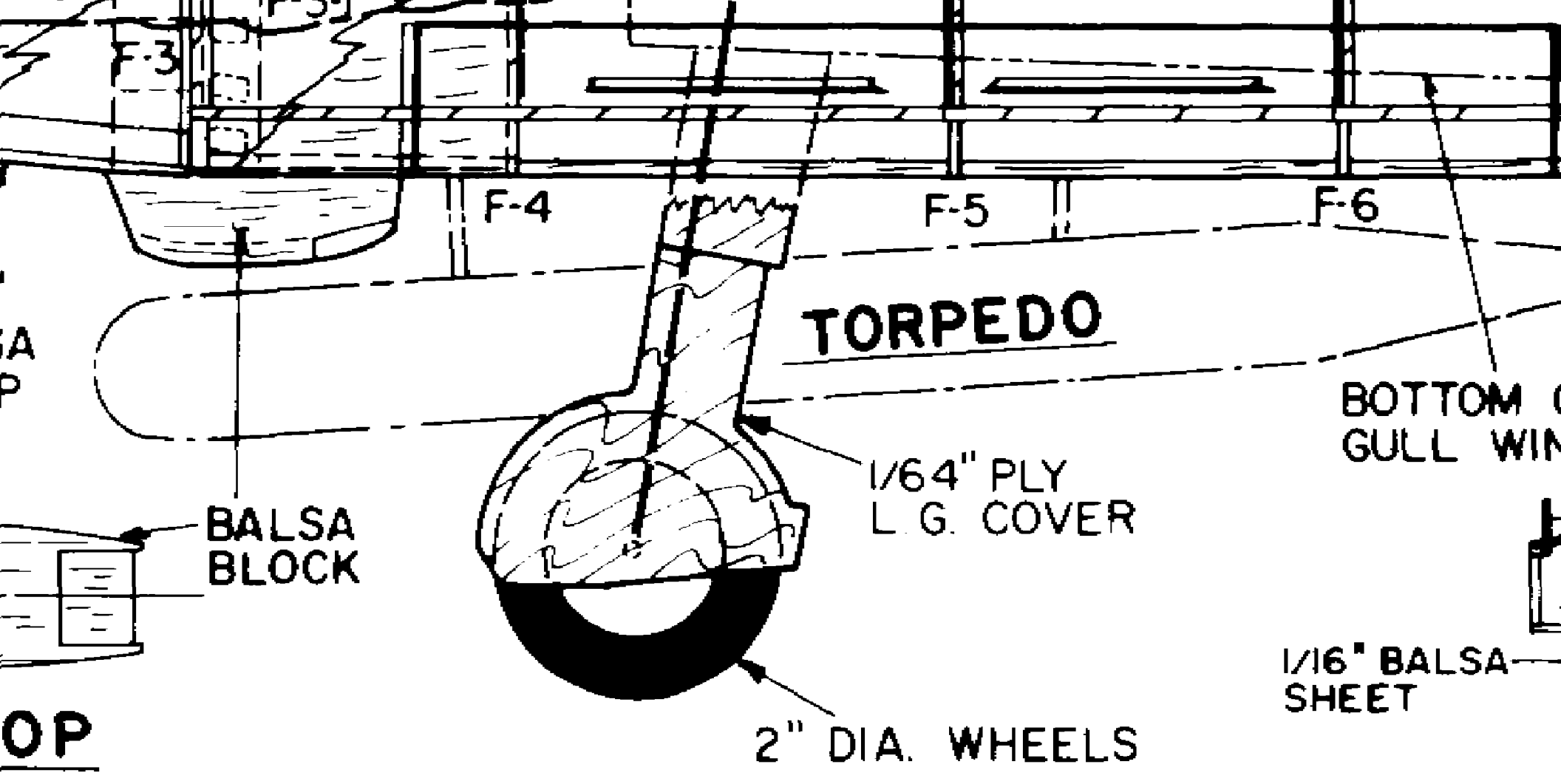
SHIM L.E. & T.E. OF STAB &
RUDDER 3/32" WHEN BUILDING

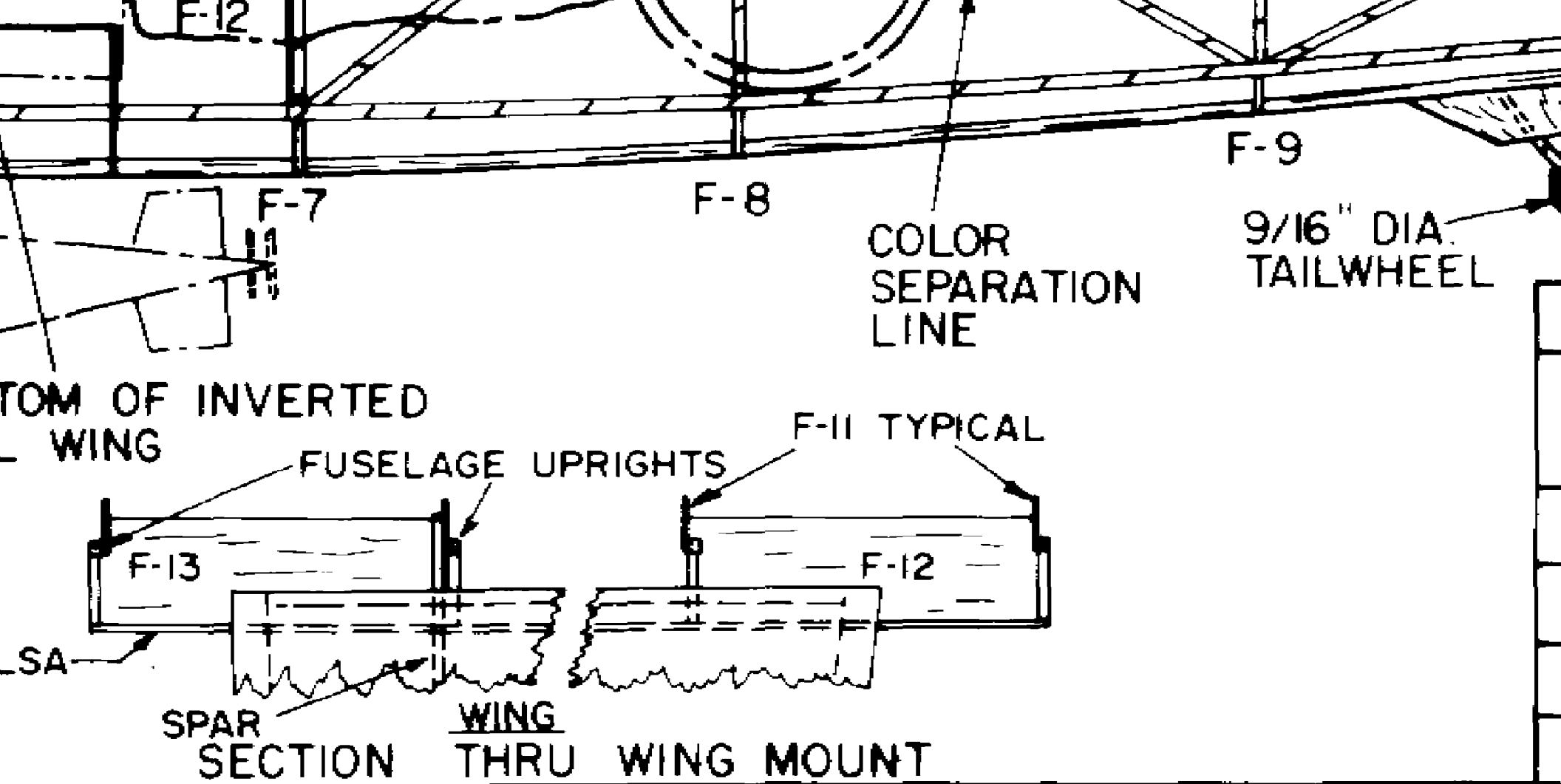
SEE WING FRONT VIEW FOR RIB SLANT
TO CONST. INVERTED GULL WING

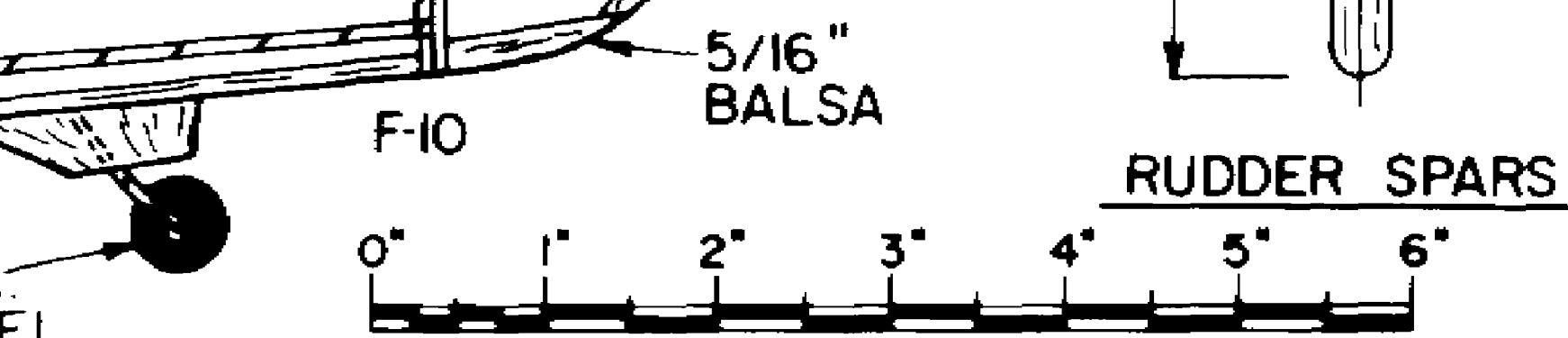
NOTE RUDDER TONGUE WHICH FITS
INTO STABILIZER SLOT



AIR SCOOP







FLYING MODELS

AICHI B7A2 'GRACE'

JAPANESE TORPEDO/DIVE BOMBER

11/16" = 1' SCALE 33" WING SPAN

DESIGNED & DRAWN BY MIKE MIDKIFF

TRACING BY JOE DEMARCO