

GENERAL INSTRUCTIONS. All parts are shown full size. Follow all instructions carefully. **BUILD THE FUSELAGE FIRST.** Use the notes at the bottom of this sheet. Make the two fuselage sides with care - your model will fly better. When finished, sand the fuselage

all over to even up all joints. This allows the paper to lay on better. Build the wing next. Notes on this are on the wing plan. Make the tail group last, using the shorter pieces of wood left over. Sand the outside edges round to make a better looking model.

COVER THE MODEL before assembly. The tissue is applied with the grain running from tip to tip on the wing and from nose to tail on the fuselage. Use small pieces of paper as they are easier to handle. The wing may be covered using a single sheet from #11 to #14. From #14 to the tip use another piece. The under side of the wing can be covered with a single sheet of paper for each panel, right and left. Cover the fuselage with a single sheet only on the flat sides. On the bottom in the front and on the top, use separate pieces between each former. When covered spray the model lightly with water to tighten the paper.

FLYING NOTES. Sandpaper the propeller, thinning the blades. Measure from the ends and mark the center. Push a pin thru there, making a hole for the rubber hook. Bend the rubber hook from music wire, making it just as shown in the plan. On the straight end of the hook slip the nose bearing two washers, and the propeller. Bend the end of the hook back into a square into the prop. Sling the rubber between the front hook and the rear pin. When the model is completed, test it for balance by gliding from a low altitude. If the model stalls or noses up, small weights may be added behind the nose. Wind about 100 turns and again test. Make minor adjustments to wings and tail by breathing on the tissue and bending the part slightly. all flights in a large field on a calm day, and your plane will not be

Leading edge splice here.

WING PLAN

Leading edge 1/16x1/8"

ment to wing
rape tissue
wood for best

Build the wing directly on plan. Glue the ribs to the leading edge first. Line them up carefully while they are drying, and next cement the trailing edge to the rear of the ribs. The tip parts are cut, sanded and placed according to numbers. When the wing is assembled it should be sanded.

X-1259

Trailing edge

Note rounded wing tips.

X-12

Cut numbers from plan in the order given to the side of the right wing (and lower side of left wing)

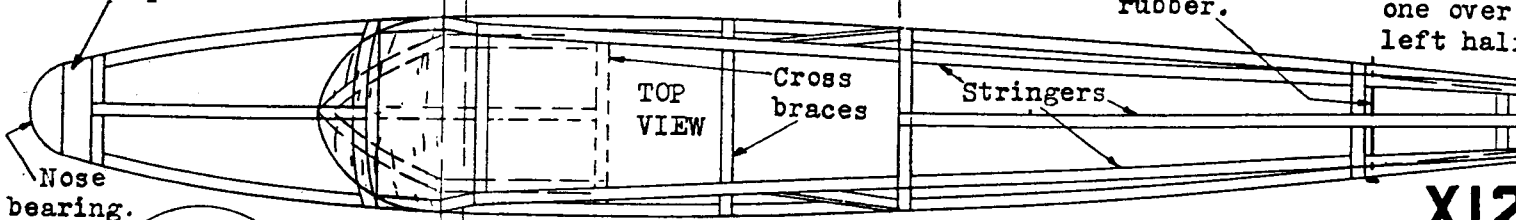


Noseblock 1/8x3/4x4 1/2 use same piece also for pants centers.

Position of wing seen from top.

Pin thru here holds rear of rubber.

Stabilizer
Make two
this direction
on plan.
one over
left half.



TOP VIEW

Cross braces

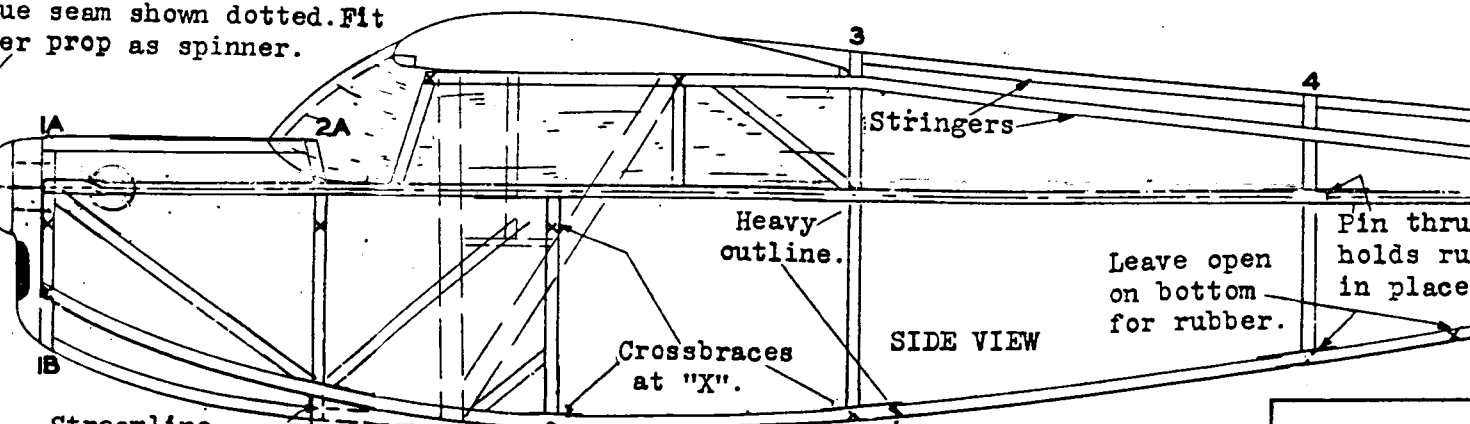
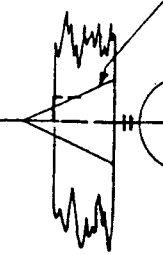
Stringers

X12

Cut out
glue to

Cut out and bend into cone. glue seam shown dotted. Fit over prop as spinner.

grain
fuse-
e wing



Stringers

Heavy outline.

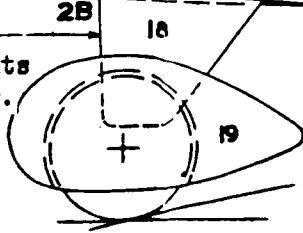
Crossbraces at "X".

SIDE VIEW

Leave open on bottom for rubber.

Pin thru holds rubber in place

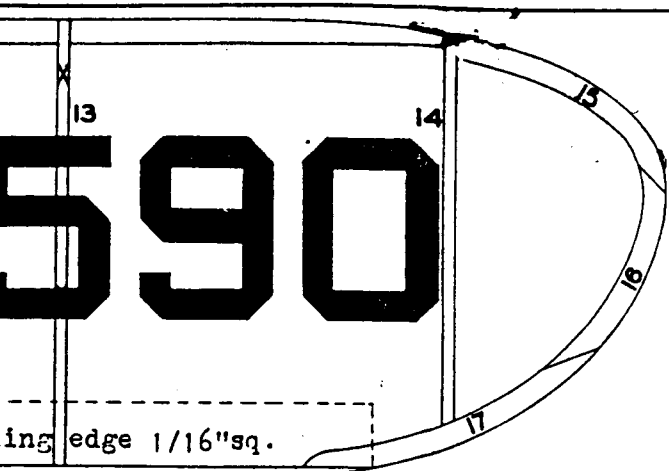
Streamline edges of pants struts by sanding.



Construct the fuselage by making two flat sides built within the heavy outline shown above. All material is 1/16"sq. Connect these side pieces with formers according to numbers and with cross braces measured from top view. Add stringers, placed in notches in formers, indicated by the black squares. When complete the entire fuselage should be sanded.

REAR VIEW
EXACT SCALING
 THE PEERLESS
 CLEVELAND, OH

are
a hole
it just
se bearing,
to a square
ement it
ar pin.
a low alt-
l behind
ents to
ghtly.
ll not be damaged.

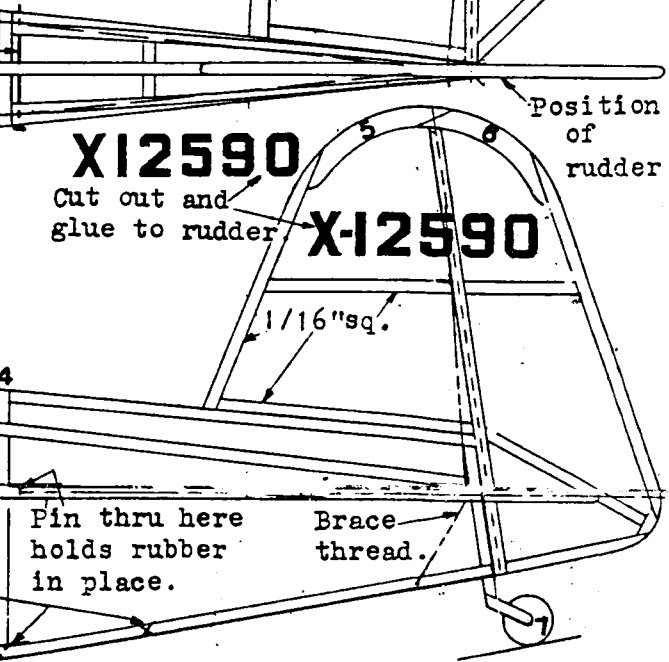
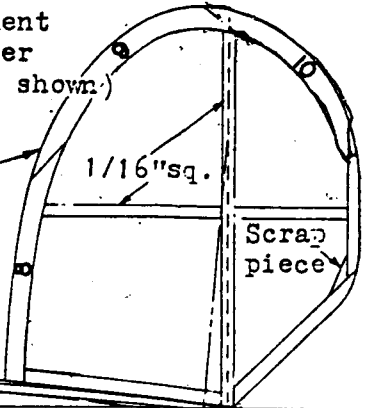


590

12590

on plan and cement
 given to the upper
 right wing (where shown)
 of left wing.

Stabilizer.
 Make two like
 this directly
 on plan. Turn
 one over for
 left half.



REARWIN SPEEDSTER
EXACT SCALE FLYING MODEL
 Copyright 1937 by
 THE PEERLESS MODEL AIRPLANE COMPANY
 CLEVELAND, OHIO U.S.A.